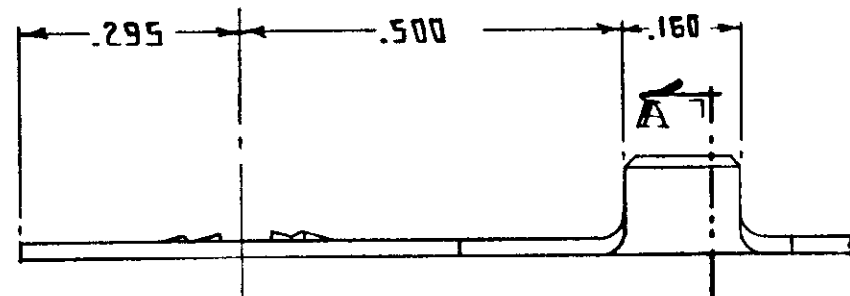
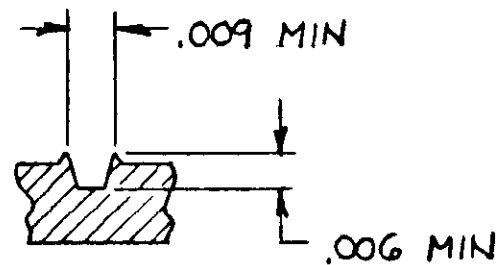


SECTION A-A



TERMINAL ACCEPTS ONE (1) # 18 MAGNET WIRE
 & ONE (1) # 20 1/2 MAGNET WIRE
 REF AMP PART # 505018-1



SECTION B-B
 TYP SERRATION

Unpublished copy not to be reproduced nor published without written permission of AMP Incorporated.

REVISION RECORD				REQUIRED PER ASSEMBLY				DWG SIZE	NUMBER	NAME	REMARKS	ITEM NO		
D	REVISE PER ECR-13-013738	GRZ	JL	15FEB2014										
C	REV PER 0710-0427-95	PmF		2/1/88										
B	RESTORATION	SJ	KB	5/23/85										
B	ADD SECT B-B, M-6405	MS	DH	7/2/81										
A	PRVD REST NOTE, H-5548	LPS	EW	1/1/73										
LTR	REVISION RECORD	DR	CHK	DATE										
								© 1972 BY AMP INCORPORATED. ALL RIGHTS RESERVED. AMP PRODUCTS COVERED BY PATENTS AND/OR PATENTS PENDING.	CUSTOMER COPY REFERENCE ONLY					
								DR <i>HILLBISH</i> 11/15/72	MATERIAL AND FINISH .020 THICK BRASS		AMP INCORPORATED HARRISBURG, PENNA.			
								CHK	WIRE - RANGE - INSULATION 20-16 MAGNET		CLASS			
								DR <i>Rob. Hillbush</i> 11/16/72	TOLERANCE EXCEPT AS NOTED ± .015 ± 1° 0'		SCALE 4x1	LOC CM B	NO 505044	REV D
								APP <i>B.T. Pollock</i> 1/3/73	NAME STUD RETAINING TERMINAL AMPLIVAR					

DIMENSIONS IN INCHES. DO NOT SCALE PRINT.

LOC 50
AF 50