

## 1 Products affected

Product hierarchy no. *			Part no.	SBU	Type / Description	Customer part no.
SBU	PG	PGU	Type			
02	007	023	0000002364	See list below	Appliance inlet 16A, PCB	1601

\*SBU (2-digit) / PG (3-digit) / PGU (3-digit) / Type (10-digit)

List of part numbers affected							
6163.0018	6163.0019	6163.0032	6163.0033	6163.0034			

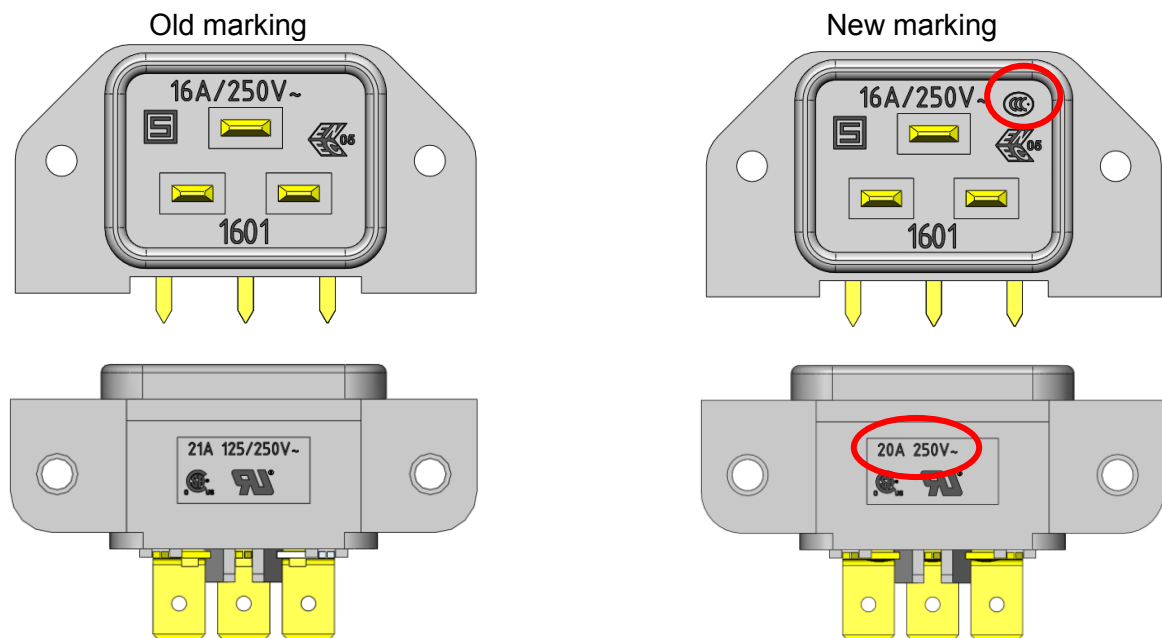
## 2 Type of change

Modification of approval and rating marks

## 3 Detailed description of change

New CCC approval mark.

Change of rated current acc. to UL 60320. New rated current for UL and CSA is 20A.



## 4 Reason of change

Extension with CCC approval mark. Rated current adjusted to UL 60320

## 5 Released date

The change will be rolled-out individually by all part numbers affected starting ww 08/2014 and last approx. 9 months.

## 6 Impact of change and recommended action

Form: New Approval mark and current rating according to UL 60320  
 Fit: N/A  
 Function: N/A  
 Production Site: N/A  
 Product Label: N/A

1601 Appliance inlet					0118.2137	
creation date	created by	release date	released by	notification no.	revision	page
2012-10-29	hollenpe	2014-04-24	hotzar	26078	a	1 of 2

**7 Reference Documents / Attachments**

Kind of document	Document number	Remarks
<a href="#">Data Sheet 1601</a>		

<b>1601 Appliance inlet</b>					<b>0118.2137</b>	
creation date	created by	release date	released by	notification no.	revision	page
2012-10-29	hollenpe	<b>2014-04-24</b>	<b>hotzar</b>	<b>26078</b>	<b>a</b>	2 of 2