

Type MOCB2-PL3 Modified Reset Circuit Breaker Automotive Type II Plug-In Type



www.optifuse.com

(619) 593-5050

Specifications:

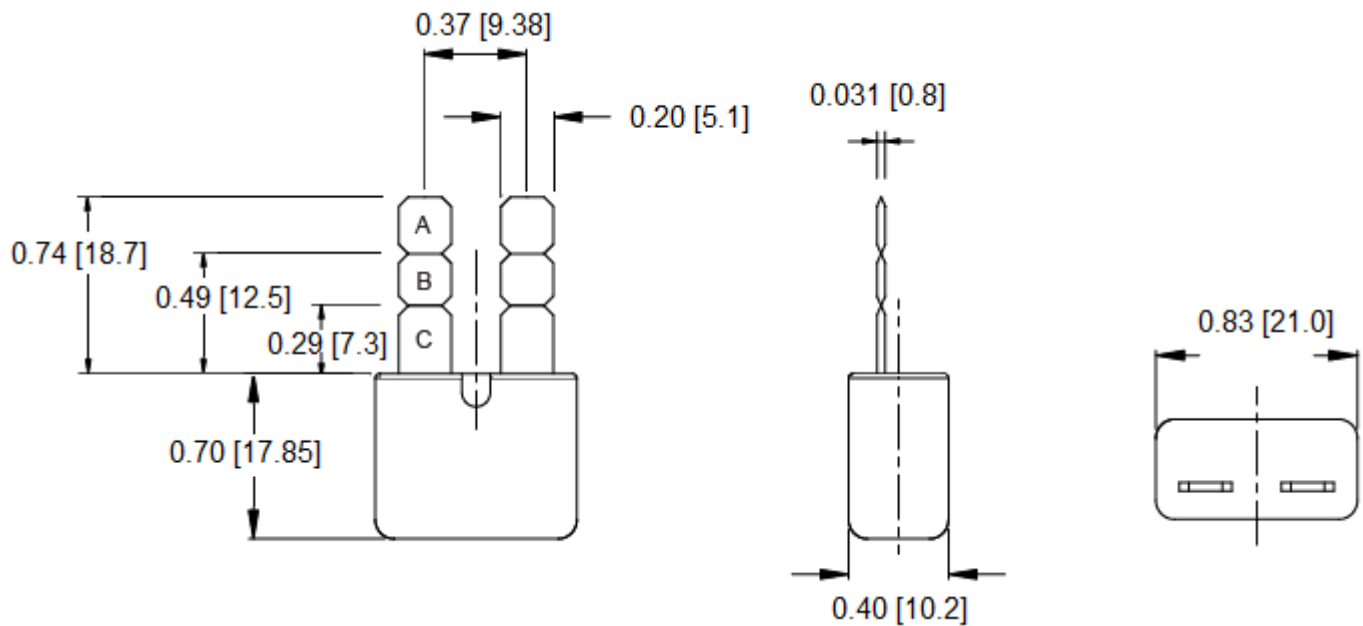
Modified Reset Type Circuit Breaker
 Voltage: Up to 12V
 Amperage: 5A, 6A, 8A, 10A, 15A, 20A, 25A, 30A
 Conforms to American National Standard SAE J553
 Operating Temperature: -20° C ~ 65° C
 Storage Temperature: -30° C ~ 90° C

Current Rating:

Rating	Open Time
100% ± 1.5%	> 30 Min
135% ± 1.5%	< 30 Min
200% ± 1.5%	< 1 Min

Part Number	Amperage
MOCB2-PL3-5A	5A
MOCB2-PL3-6A	6A
MOCB2-PL3-8A	8A
MOCB2-PL3-10A	10A
MOCB2-PL3-15A	15A
MOCB2-PL3-20A	20A
MOCB2-PL3-25A	25A
MOCB2-PL3-30A	30A

Mechanical Dimensions: Inches [mm]



	Warning: -Operation beyond the specified maximum ratings or improper use may result in damage and possible electrical arcing and/or flame.
	-Device are intended for occasional overcurrent protection. Application for repeated overcurrent condition and/or prolonged trip are not anticipated.
	-Avoid contact of device with chemical solvent. Prolonged contact may damage the device performance.