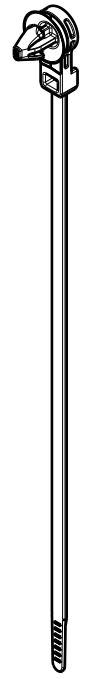
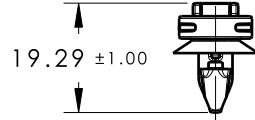
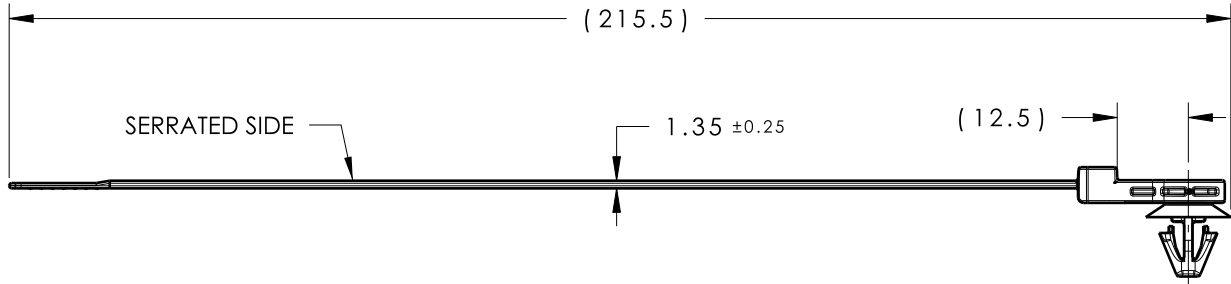
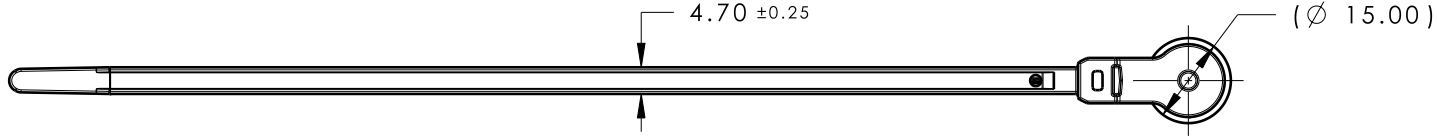
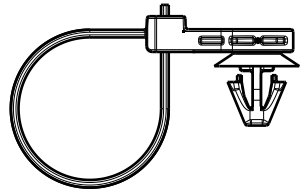


Revision Level			Revision Record	Changed	Date	Approved	Date
Drawing	State	Part					
00.1	Design Release	B	SEE ECN# 013098	KVH	6/25/15	CJR	6/25/15



ISOMETRIC VIEW
SCALE 1:2



ASSEMBLY VIEW

PERFORMANCE REQUIREMENTS AT DRY AS MOLDED:

1. ARROWHEAD PUSH IN FORCE: 45 NEWTONS (10 LBS) MAX IN THE APPLICABLE NOMINAL HOLE SIZE AND A PLATE THICKNESS OF 2.3mm.
2. ARROWHEAD PULL OUT FORCE: 110 NEWTONS (25 LBS) MIN IN THE APPLICABLE NOMINAL HOLE SIZE AND A PLATE THICKNESS OF 2.3mm.
3. SHEET METAL THICKNESS RANGE: 1.80mm - 2.80mm
4. APPLICABLE HOLE SIZE:
 - A. 6.5mm +/- 0.4
 - B. 6.35mm +/- 0.25 HEX
5. CABLE TIE MIN LOOP TENSILE STRENGTH: 225 NEWTONS (50 LBS)
6. BUNDLE RANGE: 2.0mm TO 50.0mm

PRODUCT NUMBER CROSS REFERENCE RECORD	
TYPE NUMBER	UNS-UNIVERSAL NUMBER SYSTEM
T50ROSFT6.35SO12.5B	157-00246

Material PA66HIRHS COLOR: BLACK	Units	millimeters	The copyright of this drawing is reserved by HellermannTyton. It is issued on condition that it is not reproduced, copied or disclosed to a third party, either wholly or in part, without the consent of HellermannTyton.	Drawn	KVH	5/22/15	Article/Type-No SEE CHART	Scale	3:4	
	Tolerance defined on each dimension	Approved		CJR	6/25/15	Title T50ROS WITH 12.5mm OFFSET AND 6.35mm HEX HOLE ARROWHEAD (B-SERIES)		Project Number	14-0966	
		HellermannTyton			Drawing-No		PRODUCTION : Phase	Format	AH	
					North America Email: corp@htamericas.com Web: www.hellermann.tyton.com			14-0966-001-CSU		Sheet