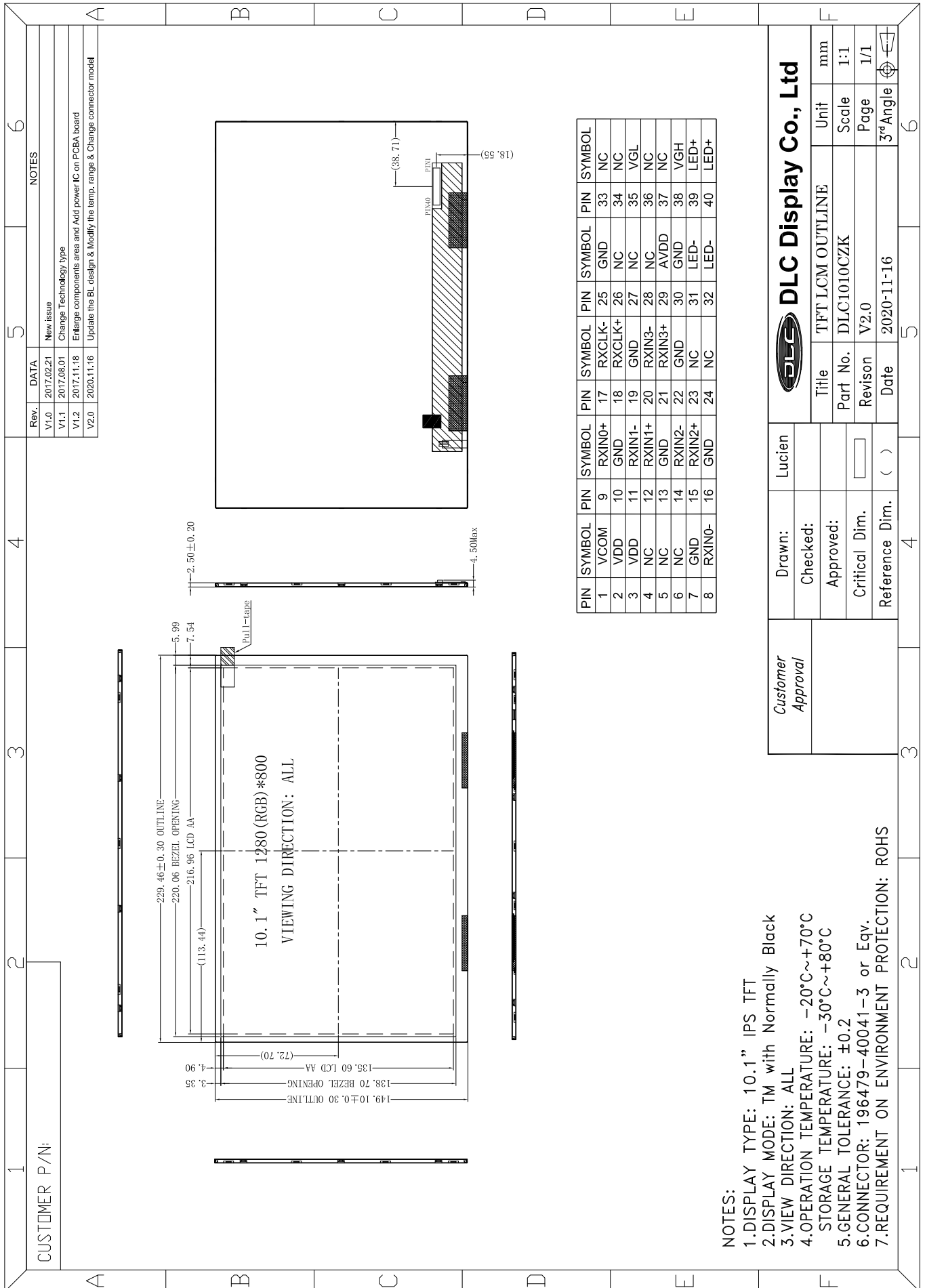




Outline Drawing



1 2 3 4 5 6

A B C D E F

CUSTOMER P/N:

NOTES

Rev.	DATA
V1.0	2017.02.21 New Issue
V1.1	2017.06.01 Change Technology type
V1.2	2017.11.18 Enlarge components area and Add power IC on PCBBA board
V2.0	2020.11.16 Update the BL design & Modify the temp. range & Change connector model

PIN	SYMBOL	PIN	SYMBOL	PIN	SYMBOL	PIN	SYMBOL	PIN	SYMBOL
1	VCOM	9	RXIN0+	17	RXCLK-	25	GND	33	NC
2	VDD	10	GND	18	RXCLK+	26	NC	34	NC
3	VDD	11	RXIN1-	19	GND	27	NC	35	VGL
4	NC	12	RXIN1+	20	RXIN3-	28	NC	36	NC
5	NC	13	GND	21	RXIN3+	29	AVDD	37	NC
6	NC	14	RXIN2-	22	GND	30	GND	38	VGH
7	GND	15	RXIN2+	23	NC	31	LED-	39	LED+
8	RXIN0-	16	GND	24	NC	32	LED-	40	LED+

- NOTES:
- 1.DISPLAY TYPE: 10.1" IPS TFT
  - 2.DISPLAY MODE: TM with Normally Black
  - 3.VIEW DIRECTION: ALL
  - 4.OPERATION TEMPERATURE: -20°C~+70°C  
STORAGE TEMPERATURE: -30°C~+80°C
  - 5.GENERAL TOLERANCE: ±0.2
  - 6.CONNECTOR: 196479-40041-3 or Eqv.
  - 7.REQUIREMENT ON ENVIRONMENT PROTECTION: ROHS



Customer Approval		DLC Display Co., Ltd	
Drawn:	Lucien	Title	TFT LCM OUTLINE
Checked:		Part No.	DLC1010CZK
Approved:		Revision	V2.0
Critical Dim.		Date	2020-11-16
Reference Dim.	( )	Unit	mm
		Scale	1:1
		Page	1/1
		3° Angle	