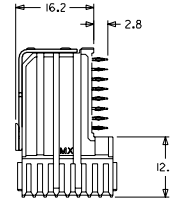
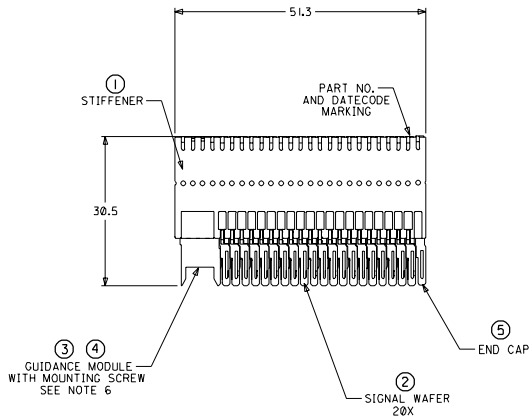
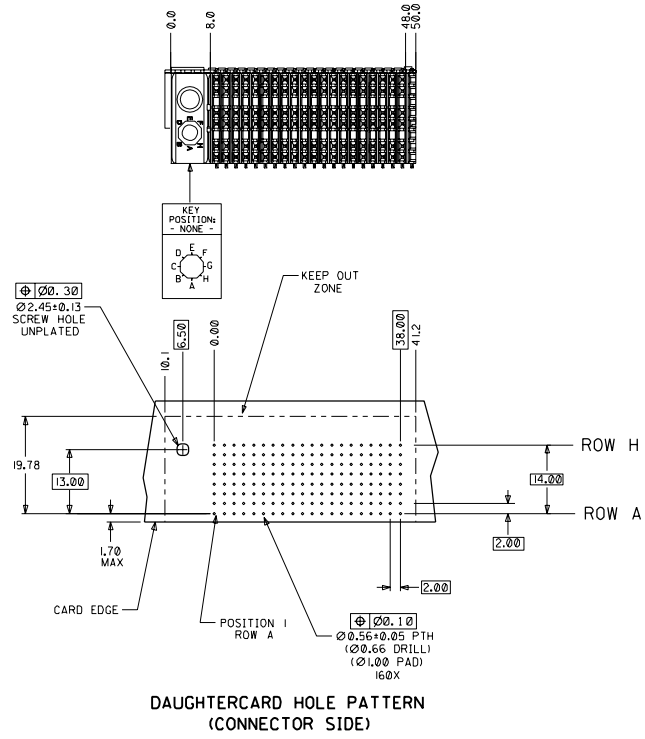


CUSTOMER: SITARA



- NOTES: (UNLESS OTHERWISE SPECIFIED)
- MATERIALS: HOUSING - LIQUID CRYSTAL POLYMER (LCP), GLASS-FILLED, UL94V-0, BLACK.
TERMINALS - HIGH PERFORMANCE COPPER ALLOY, STIFFENER - STAINLESS STEEL.
 - FINISH: SELECTIVE GOLD (Au) IN CONTACT AREA, 0.00076mm MINIMUM THICKNESS; SELECTIVE TIN/LEAD (Sn/Pb) ON PCB TAILS, NICKEL (Ni) OVERALL.
 - REFER TO MOLEX PRODUCT SPECIFICATION PS-74031-999 FOR PERFORMANCE SPECIFICATIONS.
 - REFER TO MOLEX DOCUMENT SD-74681-002 FOR ADDITIONAL DETAIL ON THE HSD SIGNAL WAFER.
 - REFER TO MOLEX DOCUMENT SD-74037-006 FOR ADDITIONAL DETAIL ON THE GUIDANCE MODULE.
 - MOUNTING SCREWS WILL BE BAGGED WITH EACH CONNECTOR.
 - PARTS ARE PACKAGED IN TUBES PER PK-70873-5041.



ITEM	PART NUMBER	DESCRIPTION	QTY
1	74046-0051	STIFFENER	1
2	74681-0001	HSD8 WAFER	20
3	74037-0008	POLARIZING/GUIDE MODULE	1
4	73726-0000	GUIDE MODULE MNTG SCREW	1
5	74038-1001	END CAP	1

INITIAL RELEASE EC NO. UDT2001-1470 DRAWN: ATP 01/06/18 CHECK: LAURX 01/06/18 APPR: BIXLER 01/06/18	QUALITY SYMBOLS MAJOR: ∇ CRITICAL: ∇	GENERAL TOLERANCES (UNLESS SPECIFIED) mm INCH	SCALE: 2:1 DESIGN UNITS: mm INCH	DIMENSIONS: mm INCH mm ONLY	SHT REV
		DRAWN BY & DATE ATP 01/06/18 CHECKED BY & DATE LAURX 01/06/18 APPROVED BY & DATE BIXLER 01/06/18	TITLE: 8 ROW HSD DAUGHTERCARD ASSEMBLY SALES DRAWING	CAD FILENAME SD-74680-023	MATERIAL NO. 74680-0023
DRAFT WHERE APPLICABLE MUST REMAIN WITHIN DIMENSIONS		THIS DRAWING CONTAINS INFORMATION THAT IS PROPRIETARY TO MOLEX INCORPORATED AND SHOULD NOT BE USED WITHOUT WRITTEN PERMISSION.			