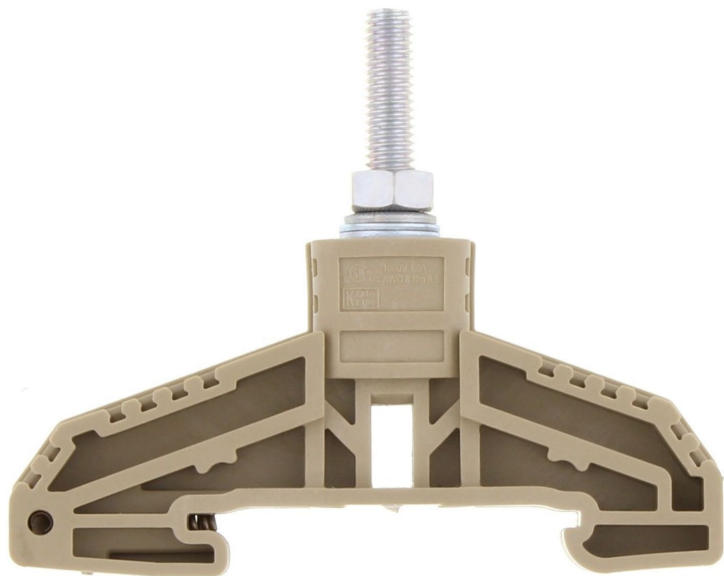


## 17000.2 HSK 16/M5 B BG



High-power stud terminal, Stud connection, Mounting type: Mounting rail TS 35/7.5, Rated cross-section: 16 mm<sup>2</sup>, Width: 13 mm, Colour: Beige

### Business data

Article number	<u>17000.2</u>
Article name	HSK 16/M5 B BG
GTIN (EAN)	4044211131333
Colour	Beige
Packaging unit	10
Quantity unit	PC
Weight per piece (not including packaging)	18.5 g
Weight per piece (including packaging)	22.12 g
Unit of weight	G
Customs number	85369010
Country of origin	DE
Product description	High-power stud terminal

### Technical data

#### Dimensions

Length	67 mm
Length with TW/ADH	67 mm
Width	13 mm
Height TS 35/7.5	55.5 mm
Height TS 35/7.5 with TW/ADH	58 mm

#### Ratings

Rated voltage	1000 V
Rated current	76 A
Rated cross-section	16 mm <sup>2</sup>
Rated impulse voltage	8 kV
Overvoltage category	III
Contamination degree	3
Maximum power dissipation for nominal condition	2.43 W

#### Connection data

Connection principle	Stud connection
Connection position	Top
Connections	1
Number of terminals per level	1
Number of levels	1
Wire cross-section AWG, min.	10
Wire cross-section AWG, max.	1/0
Bolt head	Hexagon
Bolt thread	M 5
Tightening torque, min.	2 Nm
Tightening torque, max.	4 Nm
Contact wire range	? 16 mm <sup>2</sup>

#### Materials

Insulation housing	Polyamide 6.6
Flammability class UL 94	V-0
Working temperature, min.	-40 °C
Working temperature, max.	120 °C

---

### Technical data

---

#### Further technical data

Mounting type	Mounting rail TS 35/7,5
Number of cross-connection channels	1
DIN 46234 / 1 cable lug per side, min.	0.1 mm <sup>2</sup>
DIN 46234 / 1 cable lug per side, max.	16 mm <sup>2</sup>
DIN 46234 / 2 cable lugs per side, min.	0.1 mm <sup>2</sup>
DIN 46234 / 2 cable lugs per side, max.	16 mm <sup>2</sup>
DIN 46235: 1 cable lug per side, max.	10 mm <sup>2</sup>
DIN 46235: 1 cable lug per side, min.	6 mm <sup>2</sup>
DIN 46235: 2 cable lugs per side, min.	6 mm <sup>2</sup>
DIN 46235: 2 cable lugs per side, max.	10 mm <sup>2</sup>

#### Environmental Product Compliance

REACH Conform	yes
REACH Reference date	2022-01-17
REACH Candidate Substance Note	No
RoHS Conform	yes

### Approvals

#### Standards and regulations

EAC approval	TR ZU 004/2011
--------------	----------------

EAC approval granted	yes
----------------------	-----

#### CSA approval

CSA approval	C22.2 No 158
--------------	--------------

CSA approval granted	yes
----------------------	-----

CSA Usegroup C: rated voltage	1000 V
-------------------------------	--------

CSA Usegroup C: rated current	60 A
-------------------------------	------

CSA Usegroup D: rated voltage	1000 V
-------------------------------	--------

CSA Usegroup D: rated current	60 A
-------------------------------	------

CSA wire cross-section AWG, max.	8
----------------------------------	---

CSA torque, max.	8.5 Nm
------------------	--------

#### CSAus approval

CSAus approval	UL 1059
----------------	---------

CSAus approval granted	yes
------------------------	-----

CSAus Usegroup C: rated voltage	1000 V
---------------------------------	--------

CSAus Usegroup C: rated current	60 A
---------------------------------	------

CSAus Usegroup D: rated voltage	1000 V
---------------------------------	--------

CSAus Usegroup D: rated current	60 A
---------------------------------	------

CSAus wire cross-section AWG, max.	8
------------------------------------	---

CSAus torque, max.	8.5 Nm
--------------------	--------

#### cUL Recognized

cUL approval	C22.2 No 158
--------------	--------------

cUL Usegroup E: rated voltage	1000 V
-------------------------------	--------

cUL Usegroup E: rated current	60 A
-------------------------------	------

cUL wire cross-section AWG, max.	6
----------------------------------	---

cUL torque, max.	8.5 Nm
------------------	--------

cUL wire material	Cu
-------------------	----

cUL Recognized	1
----------------	---

### Approvals

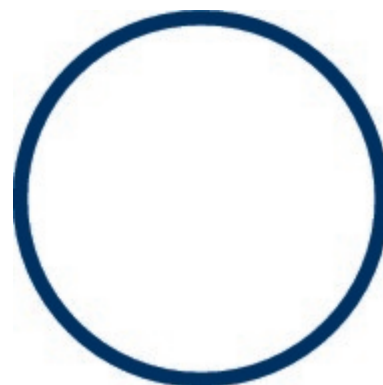
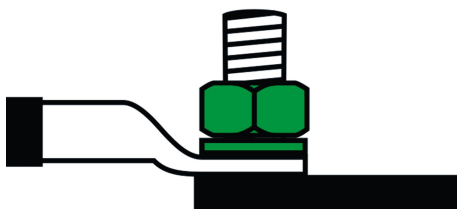
#### KEMA KEUR approval

KEMA KEUR approval	EN 60947-7-1:2009
KEMA KEUR approval granted	yes
KEMA rated voltage	1000 V
KEMA rated current	76 A
KEMA rated impulse voltage	8 kV
KEMA wire cross-section (DIN 46234), min.	0.1 mm <sup>2</sup>
KEMA wire cross-section (DIN 46234), max.	16 mm <sup>2</sup>
KEMA wire cross-section (DIN 46235), min.	0.1 mm <sup>2</sup>
KEMA wire cross-section (DIN 46235), max.	10 mm <sup>2</sup>

#### UL Recognized

UL approval	UL 1059
UL Usegroup E: rated voltage	1000 V
UL Usegroup E: rated current	60 A
UL wire cross-section AWG, max.	6
UL torque, max.	75.2 Lb In.
UL wire material	Cu
UL factory wiring	1
UL field wiring	1
UL Recognized	1

### Media



### Accessories

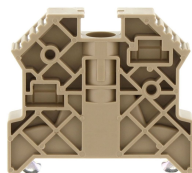
#### Protective hood



Cover profile, Length: 52 mm, Width: 13 mm, Colour: Yellow

Article number	Article name	GTIN (EAN)	Packaging unit
<u>17019.8</u>	AD 16 YE	4044211131647	20 ST

#### End stop



End stop, Mounting type: Mounting rail TS 35/7.5, Width: 9.5 mm, Colour: Beige

Article number	Article name	GTIN (EAN)	Packaging unit
<u>2828.0</u>	ES 35/K/ST BG	4044211055547	50

#### Cross-connector



Cross-connector, No. of poles: 2, Mounting type: Can be screwed on, Width: 27 mm, Rated cross-section: 16 mm<sup>2</sup>, Colour: natural

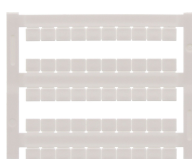
Article number	Article name	GTIN (EAN)	Packaging unit
<u>17008.0</u>	QS 2/16	4044211131531	10 ST



Cross-connector, No. of poles: 3, Mounting type: Can be screwed on, Width: 42 mm, Rated cross-section: 16 mm<sup>2</sup>, Colour: natural

Article number	Article name	GTIN (EAN)	Packaging unit
<u>17009.0</u>	QS 3/16	4044211131548	10 ST

#### Quick marking



Terminal marker / Pocket Maxicard, Length: 5 mm, Width: 6 mm, Colour: White

Article number	Article name	GTIN (EAN)	Packaging unit
<u>4702.7</u>	PMC SB 6/50 WH	4044211089986	500 ST

### Partition plate



Partition plate, Width: 2 mm, Colour: Beige

Article number	Article name	GTIN (EAN)	Packaging unit
<u>17018.2</u>	TW 16-120 BG	4044211131630	20 ST