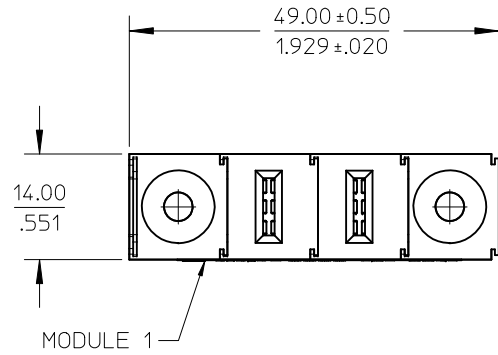
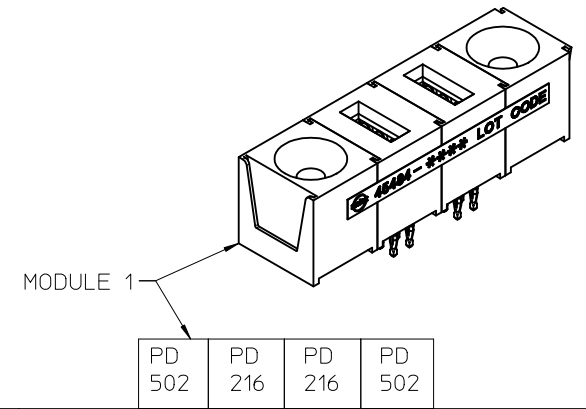
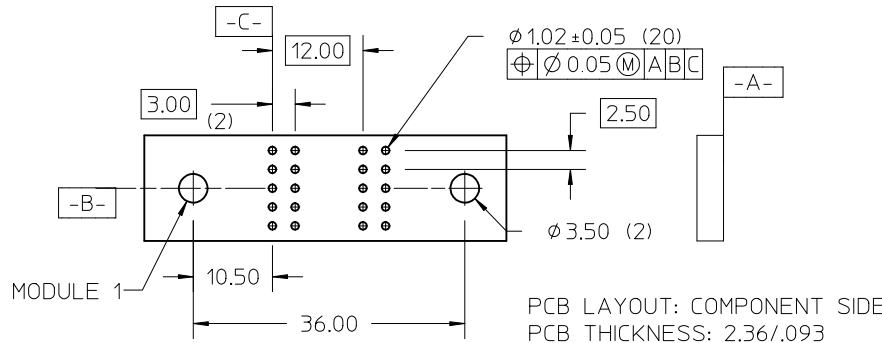
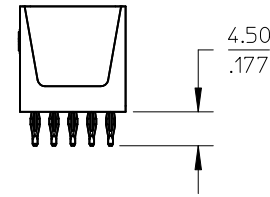
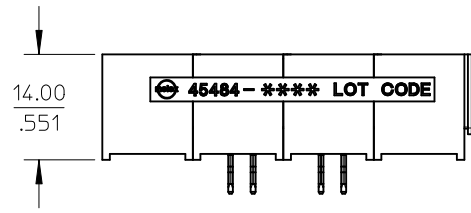


NOTES:

- 1. MATERIAL: LCP, GLASS FILLED, UL 94V-0, BLACK  
CONTACTS: COPPER ALLOY
- 2. FINISH: SELECT GOLD 30 μN MIN  
SELECT TIN 100 μN MIN  
BOTH OVER NICKEL
- 3. PRODUCT SPECIFICATION: PS-45424-001
- 4. PACKAGING SPECIFICATION: PK-45424-001
- 5. PCB HOLE SPECIFICATION: PS-45424-001
- 6. THIS PART CONFORMS TO CLASS B REQUIREMENTS OF  
COSMETIC SPEC PS-45499-002.



MODULE 1



MODULE 1

2012/06/18

INITIAL RELEASE	2012/06/26
EC NO: UCP2012-3818	DESCRIPTION
DRWN: JSCHAFFER	
CHKD:	
APPR: APATEL	
REV	
1	

QUALITY SYMBOLS	=0
	=0
	=0
	=0

GENERAL TOLERANCES (UNLESS SPECIFIED)		
	mm	INCH
4 PLACES	± ---	± ---
3 PLACES	± ---	± ---
2 PLACES	± 0.13	± ---
1 PLACE	± 0.25	± ---
0 PLACE	± ---	± ---
ANGULAR ± 1/2°		
DRAFT WHERE APPLICABLE MUST REMAIN WITHIN DIMENSIONS		

DIMENSION STYLE	
MM ONLY	
DRAWN BY	DATE
JSCHAFFER	2012/06/18
CHECKED BY	DATE
APPROVED BY	DATE
APATEL	2012/06/26
MATERIAL NO.	
45484-0179	
SIZE	
A	

SCALE	DESIGN UNITS	THIRD ANGLE PROJECTION	
1:1	METRIC		
TITLE			
POWER DOCK ASSEMBLY SOCKET, VERTICAL CPI			
<b>molex</b>			
DOCUMENT NO.		SHEET NO.	
45484-0179		SD-45484-0179	
		1 OF 1	
THIS DRAWING CONTAINS INFORMATION THAT IS PROPRIETARY TO MOLEX INCORPORATED AND SHOULD NOT BE USED WITHOUT WRITTEN PERMISSION			