

Assembly instruction

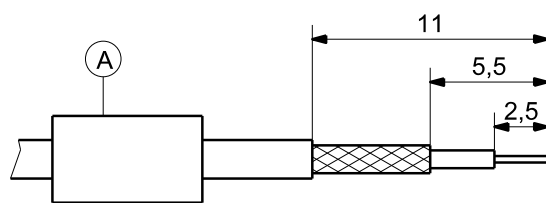
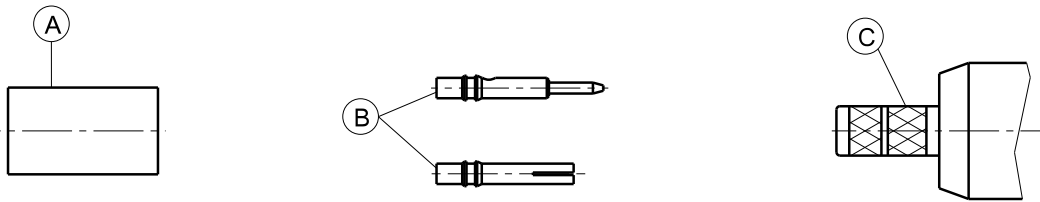
Series SMB, SMC, SMS

0000179013

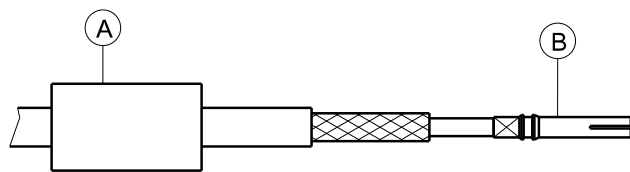


Old instruction No. 03077

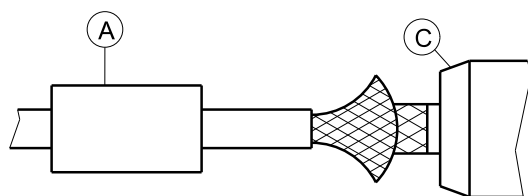
Tools and materials required: Stanley-blade Scissors Crimp tool (see table below)	Straight connectors for flexible cable		
	Cable entry: SUHNER Full-Crimp		
	Connector types: (e.g.)		
	11_SMC/S-50-1-10	11_SMB/C-50-2-10	
	21_SMB-50-1-10	21_SMB/C-50-2-10	
	24_SMB/C-50-1-10	24_SMB/C-50-2-110	
This connector is supplied in 3 parts.	Suitable cables: (e.g.)	RG 178 B/U	RG 174/U
	Centre contact:	cavity 1	cavity 1
	Braid:	cavity A	cavity A
	Crimp tool:	1, 2, A (red)	1, 2, A (red)



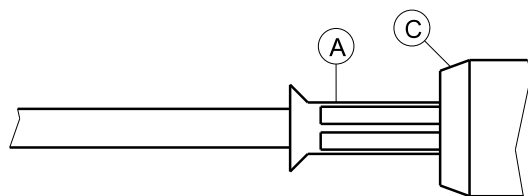
Slide ferrule A onto cable.
Prepare cable according to diagram.
CAUTION: Do not damage braid, inner conductor and dielectric of cable!



Push contact B over inner conductor of cable to abut dielectric and crimp.



Splay out braid and insert cable in connector body C. Ensure that braid lies above the crimp neck.
When cable dimension 2 is used Center-Pin has to snap in.



Slide ferrule A over braid and crimp as close to connector body C as possible.

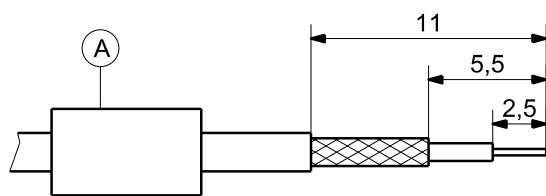
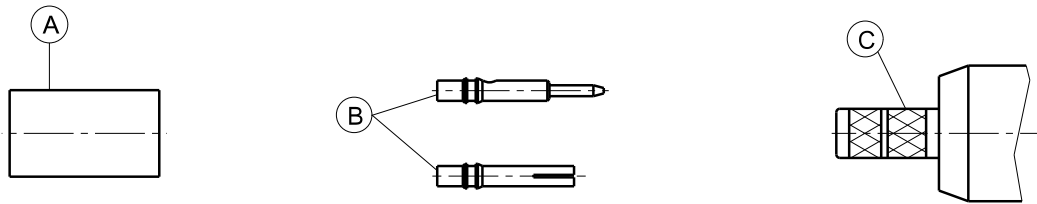
The cable assembly of R.F. connectors can only be done by well trained assembly staff and suitable assembly equipment.
Huber+Suhr's skilled staff and specialised equipment are available to carry out complete R.F. lead-assembly on your behalf.
We mount your connectors on cables at economic prices! Please contact our representative for further details of this service.

Revision	B
Date	01.04.2015
Initiator	4726/Bom

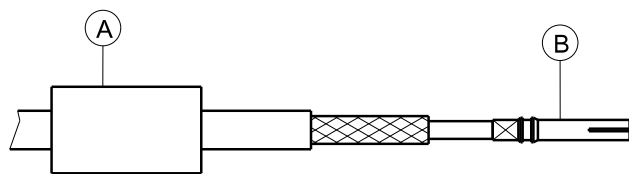
Deutscher Text: siehe Rückseite



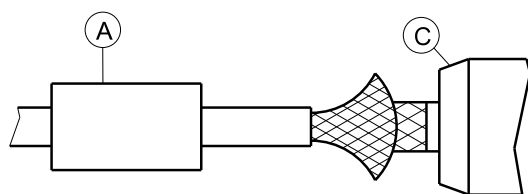
Benötigte Hilfsmittel: Stanley-Messer Schere Klemmwerkzeug (siehe Tabelle)	Gerade Verbinder für flexible Kabel		
	Kabeleinführung: SUHNER Voll-Klemmung		
Dieser Verbinder wird in 3 losen Teilen geliefert.	Verbinder-Typen: (z.B.)		
	11_SMC/S-50-1-10	11_SMB/C-50-2-10	
	21_SMB-50-1-10	21_SMB/C-50-2-10	
	24_SMB/C-50-1-10	24_SMB/C-50-2-110	
Geeignete Kabel: z.B.	RG 178 B/U	RG 174/U	
Innenleiter:	Aussparung 1	Aussparung 1	
Aussenleiter:	Aussparung A	Aussparung A	
Klemmwerkzeug:	1, 2, A (rot)	1, 2, A (rot)	



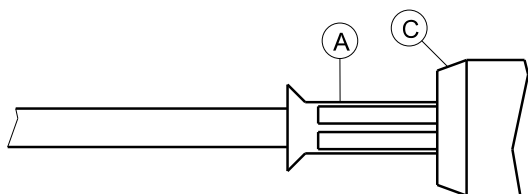
Hülse A auf das Kabel schieben.
Kabel gemäss Figur abisolieren.
ACHTUNG: Abschirmung, Dielektrikum und Innenleiter nicht beschädigen!



Kontakt B über Kabelinnenleiter bis zum Dielektrikum stossen und klemmen.



Abschirmung leicht aufspreizen und Kabel in Gehäuse C einführen.
Abschirmung muss über Klemmhals liegen.
Innenleiter muss bei Kabeldimension 2 einschnappen.



Hülse A über Abschirmung schieben und möglichst nahe am Gehäuse C klemmen.