



Mushroom pushbutton, 22 mm, round, plastic, red, 40 mm, latching, pull-to-unlatch mechanism, with holder, 1 NO+1 NC, screw terminal

|  |                           |
|--|---------------------------|
| <b>product brand name</b>                              | SIRIUS ACT                |
| <b>product designation</b>                             | Mushroom pushbuttons      |
| <b>design of the product</b>                           | Complete unit             |
| <b>product type designation</b>                        | 3SU1                      |
| <b>product line</b>                                    | Plastic, black, 22 mm     |
| <b>manufacturer's article number</b>                   |                           |
| • of supplied contact module at position 1             | 3SU1400-1AA10-1FA0        |
| • of the supplied holder                               | 3SU1500-0AA10-0AA0        |
| • of the supplied actuator                             | 3SU1000-1BA20-0AA0        |
| <b>Enclosure</b>                                       |                           |
| <b>number of command points</b>                        | 1                         |
| <b>Actuator</b>  |                           |
| <b>principle of operation of the actuating element</b> | latching                  |
| product extension optional light source                | No                        |
| color of the actuating element                         | red                       |
| <b>material of the actuating element</b>               | plastic                   |
| <b>shape of the actuating element</b>                  | round                     |
| <b>outer diameter of the actuating element</b>         | 40 mm                     |
| <b>number of contact modules</b>                       | 1                         |
| <b>type of unlocking device</b>                        | pull-to-unlatch mechanism |
| <b>number of switching positions</b>                   | 2                         |
| <b>Front ring</b>                                      |                           |
| <b>product component front ring</b>                    | Yes                       |
| <b>design of the front ring</b>                        | Standard                  |
| <b>material of the front ring</b>                      | plastic                   |
| <b>color of the front ring</b>                         | black                     |
| <b>Holder</b>  |                           |
| <b>material of the holder</b>                          | Plastic                   |
| <b>Display</b>   |                           |
| <b>number of LEDs</b>                                  | 0                         |
| <b>General technical data</b>                          |                           |
| <b>product function</b>                                |                           |
| • positive opening                                     | Yes                       |
| • EMERGENCY OFF function                               | No                        |
| • EMERGENCY STOP function                              | No                        |
| product component light source                         | No                        |
| insulation voltage rated value                         | 500 V                     |

|   |  |
|---|--|
| <b>degree of pollution</b>                                | 3  |
| type of voltage of the operating voltage                  | AC/DC  |
| <b>surge voltage resistance rated value</b>               | 6 kV   |
| <b>protection class IP</b>                                | IP66, IP67, IP69(IP69K)  |
| • of the terminal   | IP20, clamping screw tightened   |
| <b>degree of protection NEMA rating</b>                   | 1, 2, 3, 3R, 4, 4X, 12, 13   |
| <b>shock resistance</b>                                   |  |
| • acc. to IEC 60068-2-27                                  | Sinusoidal half-wave 50g / 11 ms   |
| • for railway applications acc. to DIN EN 61373           | Category 1, Class B  |
| <b>vibration resistance</b>                               |  |
| • acc. to IEC 60068-2-6                                   | 10 ... 500 Hz: 5g  |
| • for railway applications acc. to DIN EN 61373           | Category 1, Class B  |
| <b>operating frequency maximum</b>                        | 1 800 1/h  |
| mechanical service life (switching cycles) typical        | 500 000  |
| electrical endurance (switching cycles) typical           | 10 000 000   |
| <b>thermal current</b>                                    | 10 A   |
| <b>reference code acc. to IEC 81346-2</b>                 | P  |
| <b>continuous current of the C characteristic MCB</b>     | 10 A; for a short-circuit current smaller than 400 A   |
| <b>continuous current of the quick DIAZED fuse link</b>   | 10 A   |
| <b>continuous current of the DIAZED fuse link gG</b>      | 10 A   |
| • operating voltage at AC                                 |  |
| — at 50 Hz rated value                                    | 5 ... 500 V  |
| — at 60 Hz rated value                                    | 5 ... 500 V  |
| • operating voltage at DC rated value                     | 5 ... 500 V  |
| <b>Power Electronics</b>                                  |  |
| <b>contact reliability</b>                                | One maloperation per 100 million (17 V, 5 mA), one maloperation per 10 million (5 V, 1 mA)   |
| <b>Auxiliary circuit</b>                                  |  |
| <b>design of the contact of auxiliary contacts</b>        | Silver alloy   |
| <b>number of NC contacts for auxiliary contacts</b>       | 1  |
| <b>number of NO contacts for auxiliary contacts</b>       | 1  |
| <b>Connections/ Terminals</b>                             |  |
| type of electrical connection of modules and accessories  | Screw-type terminal  |
| <b>type of connectable conductor cross-sections</b>       |  |
| • solid with core end processing                          | 2x (0.5 ... 0.75 mm <sup>2</sup> )   |
| • solid without core end processing                       | 2x (1.0 ... 1.5 mm <sup>2</sup> )  |
| • finely stranded with core end processing                | 2x (0.5 ... 1.5 mm <sup>2</sup> )  |
| • finely stranded without core end processing             | 2x (1,0 ... 1,5 mm <sup>2</sup> )  |
| • at AWG cables   | 2x (18 ... 14)   |
| <b>tightening torque of the screws in the bracket</b>     | 1 ... 1.2 N·m  |
| • tightening torque with screw-type terminals             | 0.8 ... 0.9 N·m  |
| <b>Ambient conditions</b>                                 |  |
| • ambient temperature during operation                    | -25 ... +70 °C   |
| • ambient temperature during storage                      | -40 ... +80 °C   |
| environmental category during operation acc. to IEC 60721 | 3M6, 3S2, 3B2, 3C3, 3K6 (with relative air humidity of 10 ... 95 %, no condensation in operation permitted for all devices behind front panel) |
| <b>Installation/ mounting/ dimensions</b>                 |  |
| <b>fastening method</b>                                   |  |
| • of modules and accessories                              | Front plate mounting   |
| <b>height</b>   | 40 mm  |
| <b>width</b>  | 40 mm  |
| <b>shape of the installation opening</b>                  | round  |
| <b>mounting diameter</b>                                  | 22.3 mm  |
| <b>positive tolerance of installation diameter</b>        | 0.4 mm   |
| <b>mounting height</b>                                    | 27.5 mm  |
| <b>installation width</b>                                 | 40 mm  |
| <b>installation depth</b>                                 | 71.7 mm  |

## Certificates/ approvals

General Product Approval

Declaration of Conformity



[Miscellaneous](#)



EG-Konf.

Test Certificates

Marine / Shipping

[Special Test Certificate](#)

[Type Test Certificates/Test Report](#)



Marine / Shipping

other



[Confirmation](#)

## Further information

Information- and Downloadcenter (Catalogs, Brochures,...)

<https://www.siemens.com/ic10>

Industry Mall (Online ordering system)

<https://mall.industry.siemens.com/mall/en/en/Catalog/product?mlfb=3SU1100-1BA20-1FA0>

Cax online generator

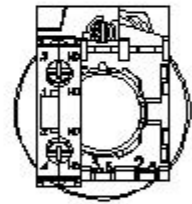
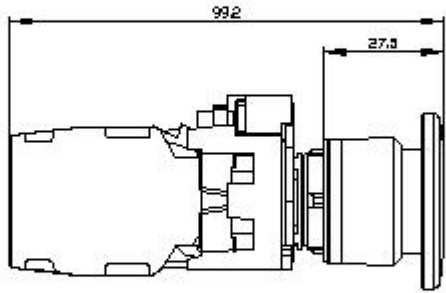
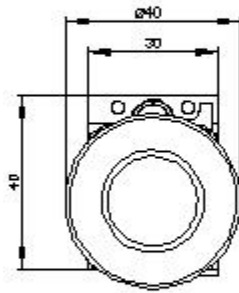
<http://support.automation.siemens.com/WW/CAXorder/default.aspx?lang=en&mlfb=3SU1100-1BA20-1FA0>

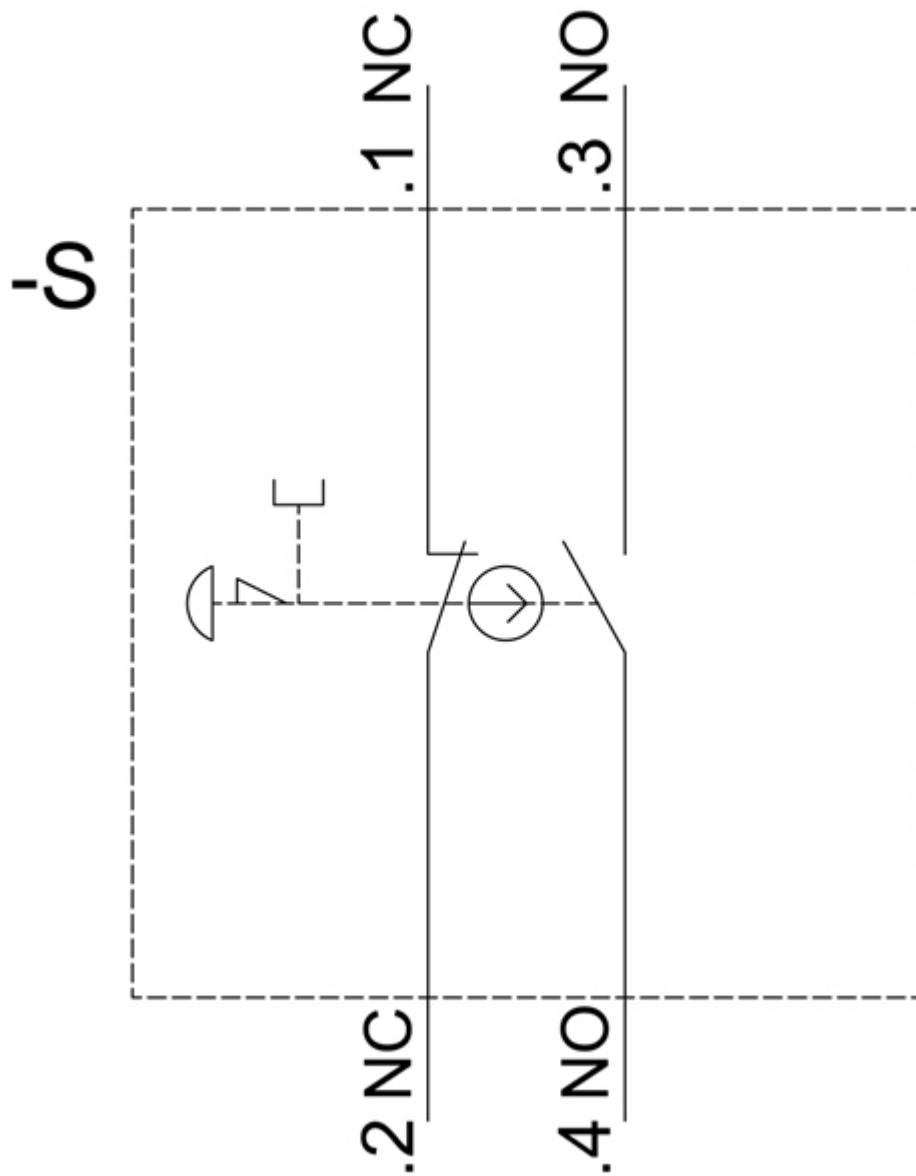
Service&Support (Manuals, Certificates, Characteristics, FAQs,...)

<https://support.industry.siemens.com/cs/ww/en/ps/3SU1100-1BA20-1FA0>

Image database (product images, 2D dimension drawings, 3D models, device circuit diagrams, EPLAN macros, ...)

[http://www.automation.siemens.com/bilddb/cax\\_de.aspx?mlfb=3SU1100-1BA20-1FA0&lang=en](http://www.automation.siemens.com/bilddb/cax_de.aspx?mlfb=3SU1100-1BA20-1FA0&lang=en)





last modified:

12/15/2020 