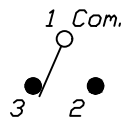


RECOMMENDED PCB LAYOUT
SCALE 2X



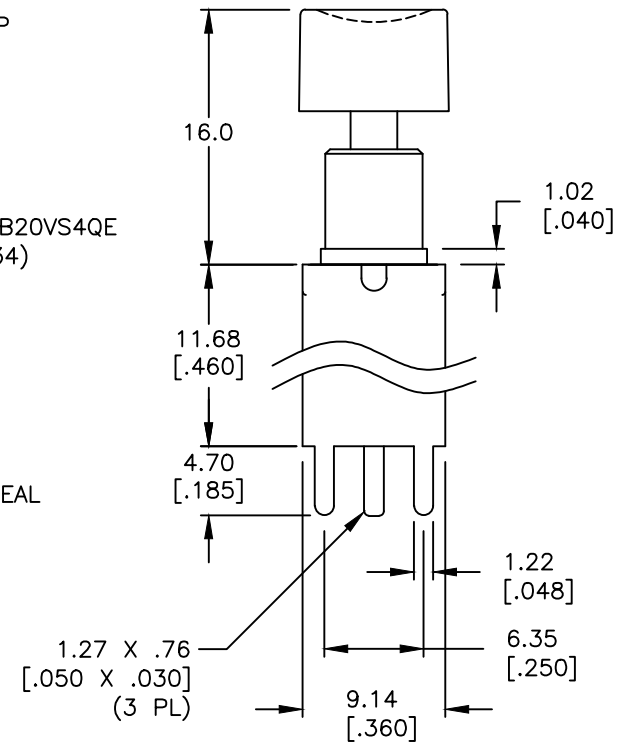
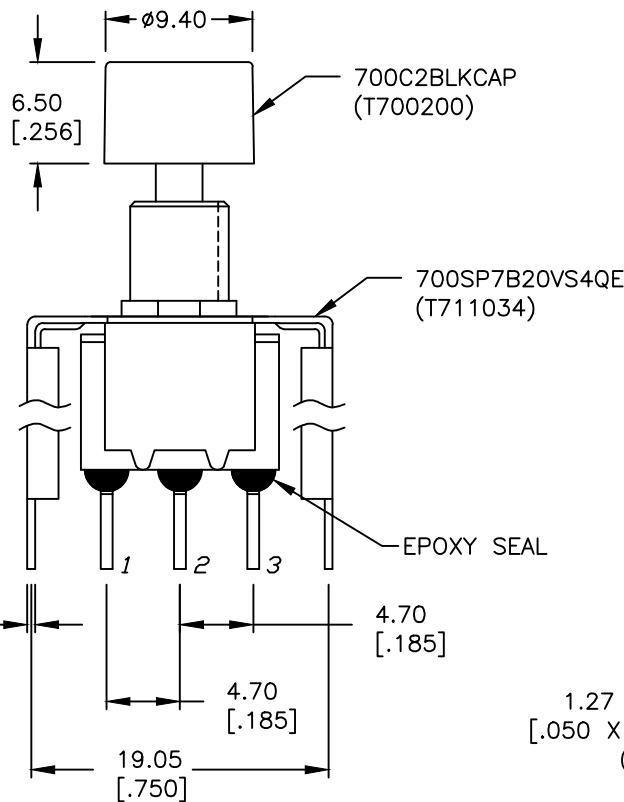
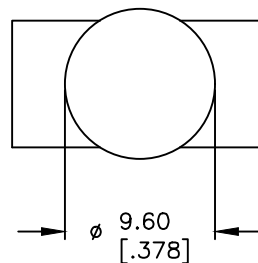
CIRCUIT: SPDT

SWITCH FUNCTION	
DN	<DN>
1-3	1-2

() = MOMENTARY

NOTES:

1. ALL DIMENSIONS IN MM [INCH]
2. GENERAL TOLERANCE: X.X=±0.4
X.XX=±0.25
3. TERM. NOS. FOR REF. ONLY
4. RATING: 1A @120VAC or 28VDC
5. FIXED TERM. & MOVING CONTACT:
Copper Alloy w/Silver plate
6. CONTACT RESISTANCE: 10mILLI-ohms initial
@2-4VDC
7. ELECTRICAL LIFE: 50,000 make-and-break
cycles at full load.
8. INSULATION RESISTANCE: 1,000M ohm min.
9. DIELECTRIC STRENGTH: 1000V RMS @sea level
10. OPERATING TEMP.: -30°C to 85°C



B	23516	update drawing	8/8/18	MW
A	12335	RELEASED FOR PRODUCTION	8/01/02	CJB
REV.	ECN No.	DESCRIPTION	DATE	CHKD

THE INFORMATION CONTAINED IN THIS DOCUMENT
IS PROPRIETARY TO E-SWITCH AND IS
NOT TO BE COPIED OR TRANSFERRED

TITLE 700SP7B20VS4QE				
SCALE 2:1	DATE 8/01/02	DR CJB	DWG XT0101P	REV B