



448.25-458.25 MHz / 468.475-478.475 MHz Cavity Duplexer

ANATECH ELECTRONICS INC
RF & Microwave Filters & Products

Part Number: AD453-473D387

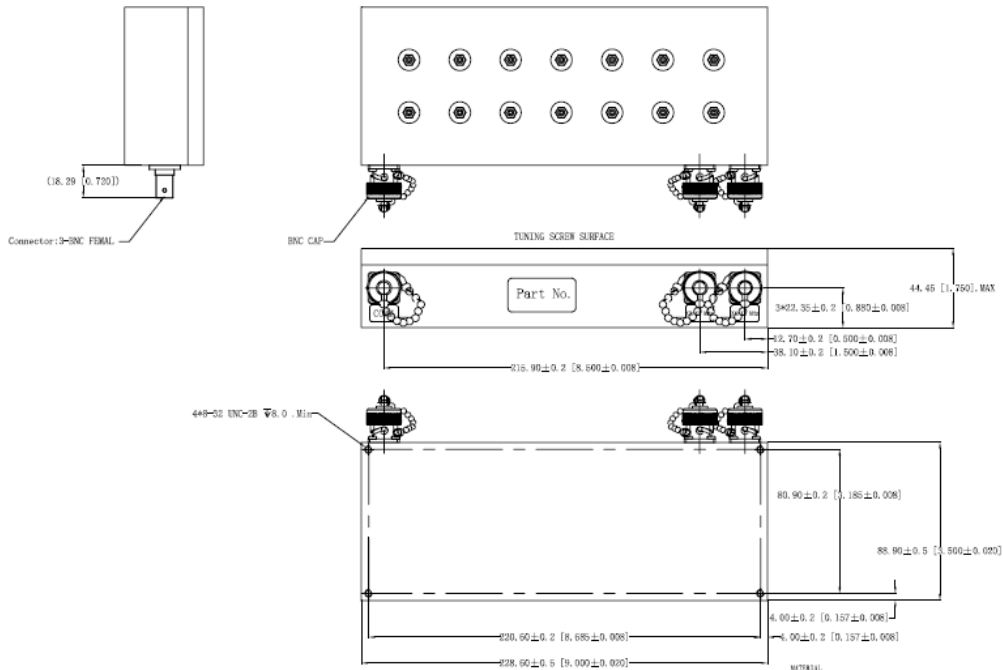


| <u>Characteristics</u> | <u>Band 1</u> | <u>Band 2</u> |
|----------------------------------|-------------------|---------------------|
| Passband: | 448.25-458.25 MHz | 468.475-478.475 MHz |
| Bandwidth: | 10 MHz | 10 MHz |
| Passband Return Loss: | 15 dB | 15 dB |
| Passband Insertion Loss: | 1 dB | 1 dB |
| Passband Ripple: | 0.2 dB | 0.2 dB |
| Input / Output Impedance: | 50 Ohms | 50 Ohms |
| Isolation: | 45 dB | 40 dB |
| Power Handling: | 50 Watts | 50 Watts |

| <u>Mechanical</u> | |
|-------------------------|-------------------------|
| Mounting Method: | Threaded Mounting Holes |
| Connector Type: | BNC (F) |
| Dimensions: | 228.6 x 88.9 x 44.45 mm |

| <u>Environmental</u> | |
|-------------------------------|------------------|
| Operating Temperature: | -40 to +70 deg.C |
| Storage Temperature: | -50 to +90 deg.C |

Outline Drawing:





448.25-458.25 MHz / 468.475-478.475 MHz
Cavity Duplexer

ANATECH ELECTRONICS INC
RF & Microwave Filters & Products

Part Number: AD453-473D387



Response Plot:

