

Keywords: filters, switched-capacitor filters, continuous-time filters

## APPLICATION NOTE 63

# Add Digital Adjustment to Continuous-Time Filters

Jul 09, 1998

*Abstract: This design note shows how adding digital-to-analog converters (DACs) provides digital tuning to continuous-time filters. A dual filter, dual op amp, and dual DAC form an adjustable bandpass circuit with a constant 500Hz bandpass over the 5kHz to 20kHz center-frequency range. The [MAX275](#) continuous-time filter and [MAX412](#) op amp are featured in this design.*

Tuned-bandpass applications often incorporate switched-capacitor filters—these filters enable a sweep of the bandpass center frequency by simply sweeping the applied clock rate. Such an arrangement allows a processor-controlled system to detect multiple frequencies, for example.

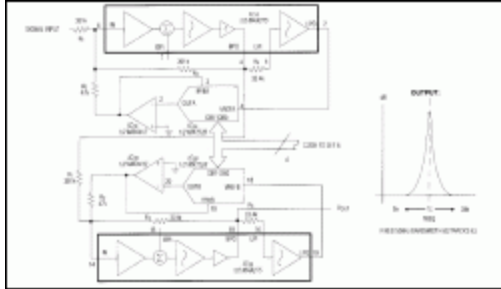
But to achieve higher bandwidths with lower noise and distortion, many high-end applications employ continuous-time filter circuits composed of resistors, capacitors, op amps, and new filter ICs. Tuning these circuits is virtually impossible because their poles and Qs are set by fixed resistors.

The addition of multiplying D/A converters provides a digital-tuning capability of continuous-time filters. In the 4th-order bandpass filter of **Figure 1**, for example, center frequency is proportional to the normalized digital code applied in parallel to the D/A converters:  $f_C = \sqrt{\text{code}}(20\text{kHz})$ , where  $f_C$  is the center frequency and code is normalized to 15/256...255/256 (the four LSBs are tied high to avoid excessive attenuation of the feedback signal). Because the converters change code simultaneously, they assure a smooth transition between center frequencies.

Code FF<sub>H</sub>, for instance, centers both 2nd-order filter sections at 20kHz with Qs of 25.8, resulting in a net (cascaded) Q of 40 and a bandwidth of 500kHz. Lower codes attenuate the feedback signal between lowpass output and the input of that section, reducing center frequency and Q in proportion across the range 5kHz to 20kHz. The passband remains a constant 500kHz.

In nontunable configurations, the bottom of R<sub>2</sub> connects the lowpass (LPO) output, providing feedback that determines the filter's pole frequency and Q. In this circuit, a D/A converter attenuates each LPO signal before it gets to R<sub>2</sub>, providing software control of the frequency and Q. Because the output amplifier associated with each converter inverts the LPO signal, R<sub>2</sub> must connect to IN (instead of BPI) to maintain the correct signal polarity.

Multiplying D/A converters can alter other feedback signals within the filter as well, providing digital control of Q alone (set by R<sub>3</sub>) and gain (set by R<sub>1</sub>), in addition to frequency. In other applications, the technique can produce adjustable-lowpass anti-aliasing filter that accommodates A/D converters with multiple sampling rates.



[More detailed image](#)

Figure 1. Three ICs—a dual filter, dual op amp, and a dual D/A converter—form an adjustable bandpass circuit that maintains a constant 500Hz bandpass over the center-frequency range 5kHz to 20kHz.

#### Related Parts

<a href="#">MAX275</a>	4th- and 8th-Order, Continuous-Time Active Filters	<a href="#">Free Samples</a>
<a href="#">MAX412</a>	Single/Dual/Quad, 28MHz, Low-Noise, Low-Voltage, Precision Op Amps	<a href="#">Free Samples</a>

#### More Information

For Technical Support: <http://www.maximintegrated.com/support>

For Samples: <http://www.maximintegrated.com/samples>

Other Questions and Comments: <http://www.maximintegrated.com/contact>

Application Note 63: <http://www.maximintegrated.com/an63>

APPLICATION NOTE 63, AN63, AN 63, APP63, Appnote63, Appnote 63

Copyright © by Maxim Integrated Products

Additional Legal Notices: <http://www.maximintegrated.com/legal>