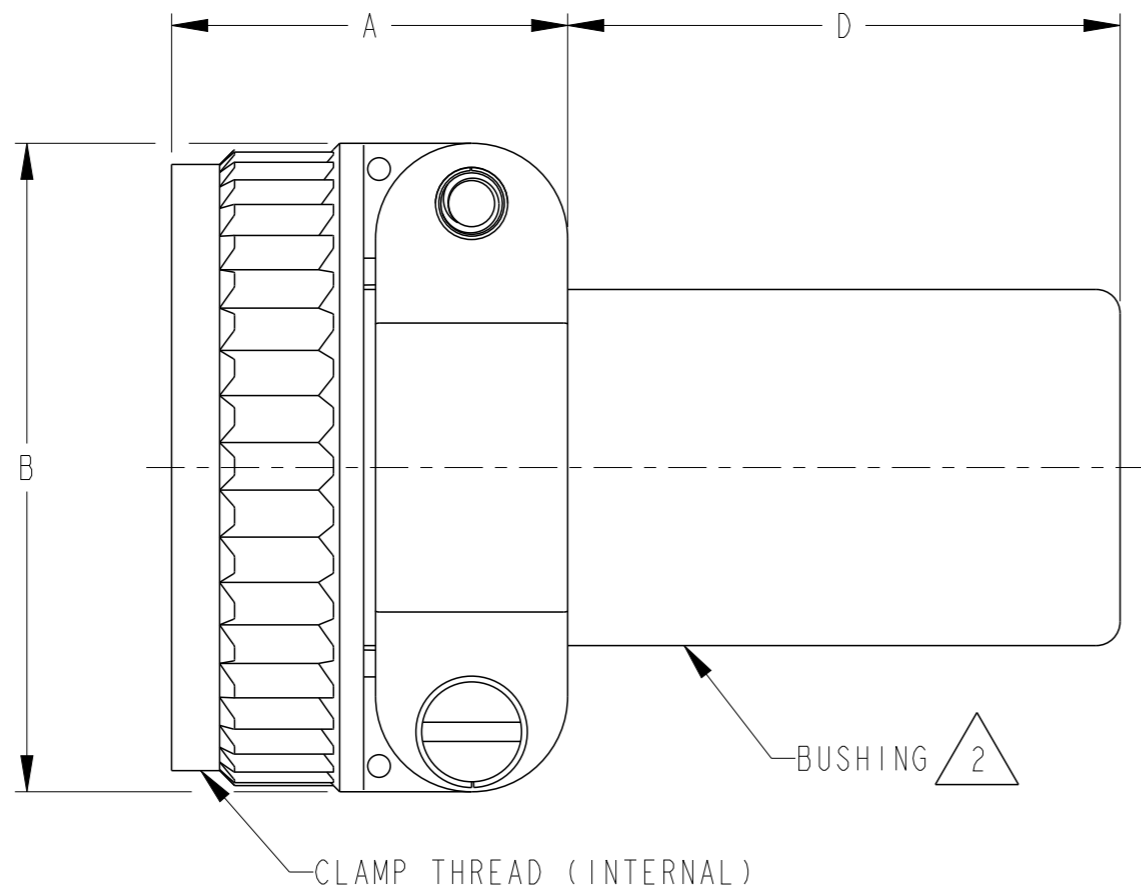
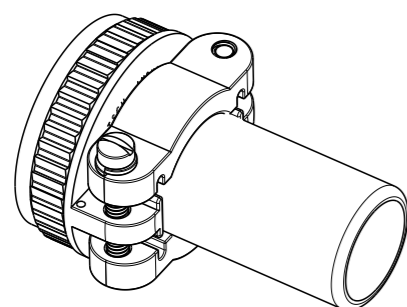
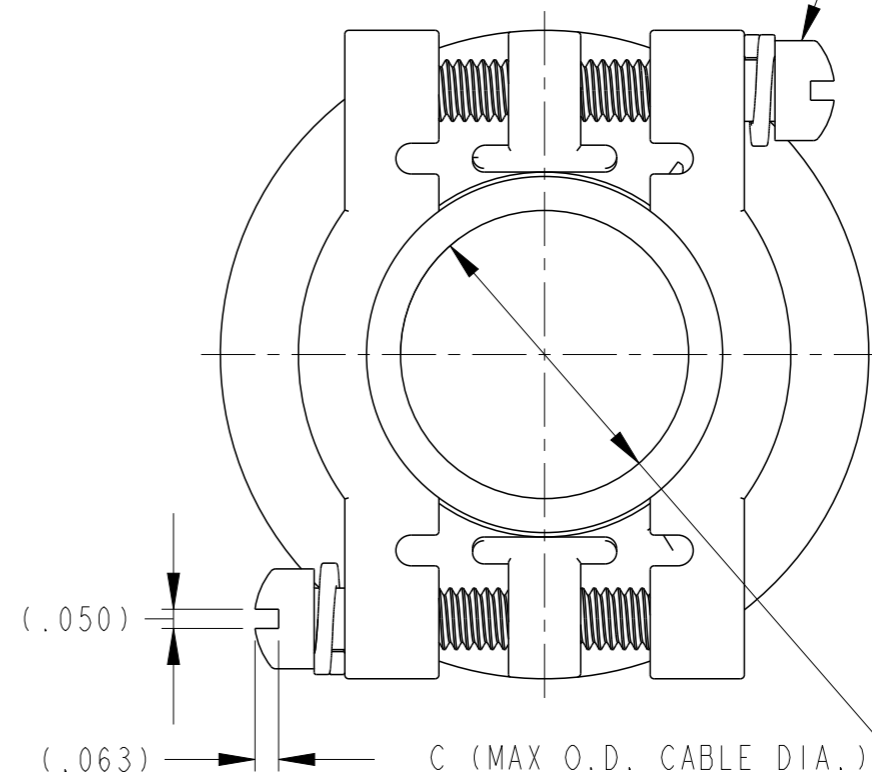


LOC	DIST	REVISIONS			
P	LTR	DESCRIPTION	DATE	DWN	APVD
	E1	REVISED PER ECO-13-015566	03OCT2013	AM	DM
	E2	REVISED PER ECO-15-006803	08JUN2015	JA	DM
	F	REVISED PER PCN E-17-004158	22MAR2017	JA	DM
	G	REVISED PER PCN E-20-016547	19NOV2020	EC	IG



8-32 X 1 1/8 2A-RH
 SLOTTED FILLISTER HEAD STAINLESS STEEL SCREW
 WITH STAINLESS STEEL LOCK WASHER (2 REQ'D)
 MAX TORQUE 17 IN-LB [1.92 N-M]
 2 PLC



XX SIZE	TE INTERNAL PART NO.	DEUTSCH PART NO.	BUSHINGS (NEOPRENE) $\triangle 2$	CLAMP THREAD CLASS 2B	A $\pm .050$ [1.27]	B $\pm .025$ [.635]	C $\pm .050$ [1.27]	D MAX.
18	0409-201-1800	0409-201-1800	1 EACH SUPPLIED	1.188-18 UNEF	.938 [23.82]	1.469 [37.31]	.760 [19.30]	1.800 [45.72]
24	0409-201-2400	0409-201-2400	2 EACH SUPPLIED	1.438-18 UNEF	1.031 [26.19]	1.688 [42.88]	.948 [24.08]	1.700 [43.18]

3. THE OPERATING TEMPERATURE IS -55°C TO 125°C.

$\triangle 2$ BUSHINGS ARE SHIPPED LOOSE WITH CABLE CLAMP ASSEMBLIES IN A SEALED PLASTIC BAG. PART NUMBER LABEL AND COUNTRY OF ORIGIN, IF OTHER THAN USA, ON THE BAG.

1. FINISH: TIN OVER NICKEL PLATE. MAY DISCOLOR.

NOTES:

THIS DRAWING IS A CONTROLLED DOCUMENT.

DIMENSIONS: INCHES [mm]	TOLERANCES UNLESS OTHERWISE SPECIFIED:
	0 PLC \pm
	1 PLC \pm
	2 PLC \pm
	3 PLC $\pm .025$ [0.64]
	4 PLC \pm
	ANGLES $\pm \pm 0^{\circ} 30' 0''$
MATERIAL N/A	FINISH N/A

DWN	02MAR2001
ALEX ROLINSKI	
CHK	08JUN2004
JAIME C. APOSTOL	
APVD	14JUN2004
ROBIN REED	
PRODUCT SPEC	N/A
APPLICATION SPEC	N/A
WEIGHT	



NAME CABLE CLAMP HD30 SERIES			
SIZE	CAGE CODE	DRAWING NO	RESTRICTED TO
A3	4AFU8	0409-201-XX00	-

CUSTOMER DRAWING	SCALE 2:1	SHEET 1 OF 1	REV G
------------------	-----------	--------------	-------