

MATERIALS AND FINISHES

BODY, ZINC ALLOY  
PLATED TIN

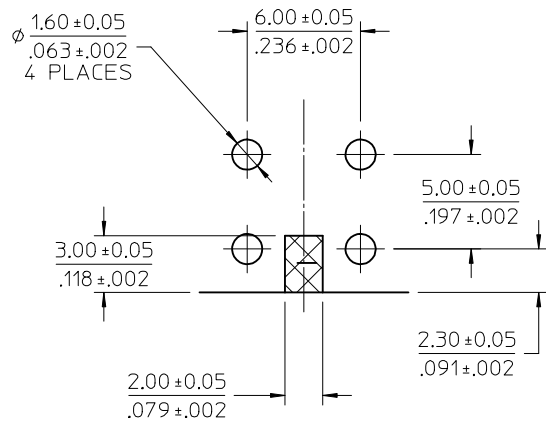
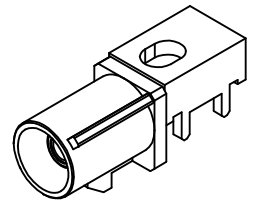
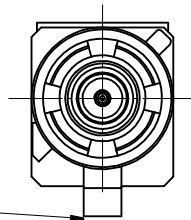
CENTER CONTACT, BRASS  
PLATED GOLD

OUTER CASING, HIGH TEMPERATURE PLASTIC  
KEYING SEE TABLE  
COLOR SEE TABLE

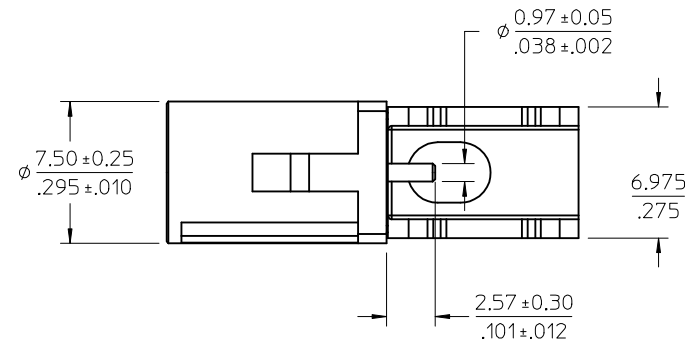
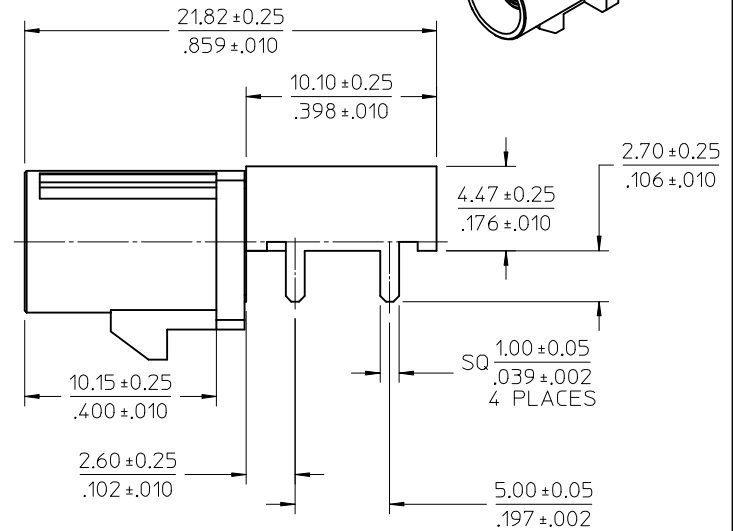
INSULATOR, TEFLON

PACKAGING BY TRAY

FAKRA  
CONNECTOR  
KEYING  
CODE I SHOWN



PCB RECOMMENDED LAYOUT



PS-89675-3310	PRODUCT SPECIFICATION
MIL-STD-348A, FIG. 311.1	INTERFACE SPECIFICATION
SPECIFICATION	DESCRIPTION

RTM PDR0912463	EC NO: URF2011-0345	2010/11/10
	DRWNLIN	2010/11/10
A	CHKD:	2010/12/31
	APPR:MHUANG	2010/12/31

QUALITY SYMBOLS	$\nabla=0$ $\nabla=0$															
GENERAL TOLERANCES (UNLESS SPECIFIED)	<table border="1"> <tr> <th></th> <th>mm</th> <th>INCH</th> </tr> <tr> <td>4 PLACES</td> <td><math>\pm .010</math></td> <td><math>\pm .0004</math></td> </tr> <tr> <td>3 PLACES</td> <td><math>\pm .015</math></td> <td><math>\pm .0006</math></td> </tr> <tr> <td>2 PLACES</td> <td><math>\pm .020</math></td> <td><math>\pm .0008</math></td> </tr> <tr> <td>1 PLACE</td> <td><math>\pm .030</math></td> <td><math>\pm .0012</math></td> </tr> </table>		mm	INCH	4 PLACES	$\pm .010$	$\pm .0004$	3 PLACES	$\pm .015$	$\pm .0006$	2 PLACES	$\pm .020$	$\pm .0008$	1 PLACE	$\pm .030$	$\pm .0012$
	mm	INCH														
4 PLACES	$\pm .010$	$\pm .0004$														
3 PLACES	$\pm .015$	$\pm .0006$														
2 PLACES	$\pm .020$	$\pm .0008$														
1 PLACE	$\pm .030$	$\pm .0012$														
ANGULAR	$\pm 2^\circ$															

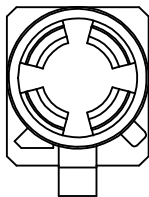
DRAWN BY	DATE	TITLE
EVITA	2009/12/14	SMB JACK, FAKRA R/A PCB, 50 OHMS WITH DOWN LATCH SMB-J/PCB/RA
CHECKED BY	DATE	
KERRIE	2009/12/14	
APPROVED BY	DATE	
MHUANG	2010/12/31	

DIMENSION STYLE	MM/IN
SCALE	DESIGN UNITS METRIC
MATERIAL NO.	SEE TABLE
DOCUMENT NO.	SD-73403-554

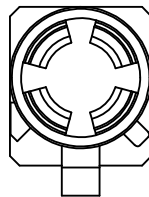
THIRD ANGLE PROJECTION	
MATERIAL NO.	SEE TABLE
DOCUMENT NO.	SD-73403-554
SHEET NO.	1 OF 3

DRAFT WHERE APPLICABLE MUST REMAIN WITHIN DIMENSIONS

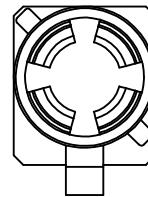
THIS DRAWING CONTAINS INFORMATION THAT IS PROPRIETARY TO MOLEX INCORPORATED AND SHOULD NOT BE USED WITHOUT WRITTEN PERMISSION



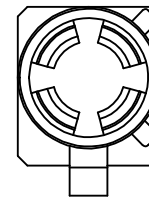
CODE-A



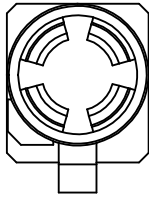
CODE-B



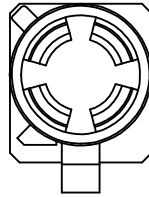
CODE-C



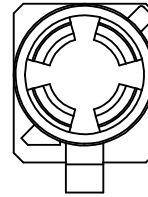
CODE-D



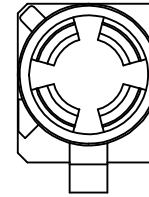
CODE-E



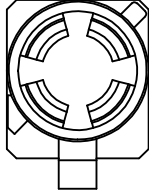
CODE-F



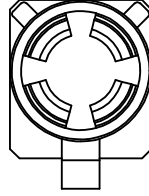
CODE-G



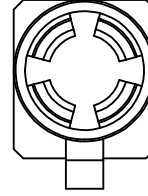
CODE-H



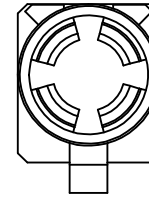
CODE-I



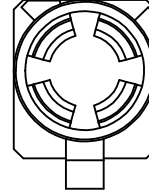
CODE-K



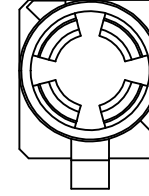
CODE-Z



CODE-L



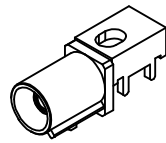
CODE-M



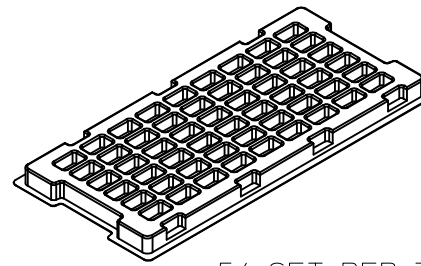
CODE-N

N	PASTEL GREEN	73403-5553
M	PASTEL ORANGE	73403-5552
L	CARMINE RED	73403-5551
Z	WATER BLUE	73403-5550
K	CURRY YELLOW	73403-5549
I	BEIGE	73403-5548
H	VIOLET	73403-5547
G	GRAY	73403-5546
F	BROWN	73403-5545
E	GREEN	73403-5544
D	BORDEAUXVIOLET	73403-5543
C	BLUE	73403-5542
B	NATURAL	73403-5541
A	BLACK	73403-5540
KEYING CODE	COLOR	PART NO.

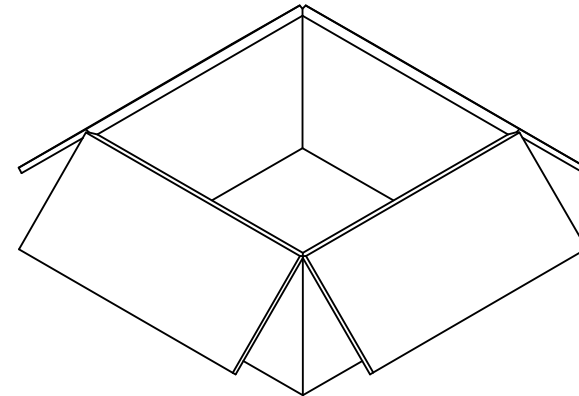
SEE SHEET 1 EC NO: URF2011-0345 DRAWN IN: 2010/11/10 CHKD: DRWNLIN APPR: MHUANG 2010/12/31	QUALITY SYMBOLS ▽=0 ▽=0	GENERAL TOLERANCES (UNLESS SPECIFIED) <table border="1"> <tr> <td></td> <td>mm</td> <td>INCH</td> </tr> <tr> <td>4 PLACES</td> <td>± ---</td> <td>± ---</td> </tr> <tr> <td>3 PLACES</td> <td>± ---</td> <td>± ---</td> </tr> <tr> <td>2 PLACES</td> <td>± ---</td> <td>± ---</td> </tr> <tr> <td>1 PLACE</td> <td>± ---</td> <td>± ---</td> </tr> </table>		mm	INCH	4 PLACES	± ---	± ---	3 PLACES	± ---	± ---	2 PLACES	± ---	± ---	1 PLACE	± ---	± ---	DIMENSION STYLE MM/IN	SCALE DESIGN UNITS METRIC	THIRD ANGLE PROJECTION
		mm	INCH																	
	4 PLACES	± ---	± ---																	
	3 PLACES	± ---	± ---																	
2 PLACES	± ---	± ---																		
1 PLACE	± ---	± ---																		
DRAFT WHERE APPLICABLE MUST REMAIN WITHIN DIMENSIONS	MATERIAL NO. SEE TABLE	DRAWN BY EVITA	DATE 2009/12/14	TITLE SMB JACK, FAKRA R/A PCB, 50 OHMS WITH DOWN LATCH SMB-J/PCB/RA	SHEET NO. 2 OF 3															
REV A	DESCRIPTION DESCRIPTION	APPROVED BY MHUANG	DATE 2010/12/31	MOLEX INCORPORATED	DOCUMENT NO. SD-73403-554															
THIS DRAWING CONTAINS INFORMATION THAT IS PROPRIETARY TO MOLEX INCORPORATED AND SHOULD NOT BE USED WITHOUT WRITTEN PERMISSION																				



P/N 73403-554X



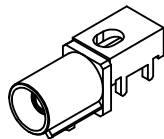
54 SET PER TRAY  
TRAY P/N 89707-0220  
360\*165\*18.6



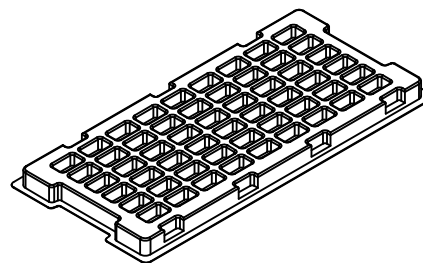
1080 SET PER OUTER  
CARTON BOX  
P/N 96708-0005  
383\*386\*196

540 SET PER INNER  
CARTON BOX  
P/N 96707-0001  
363\*176\*176

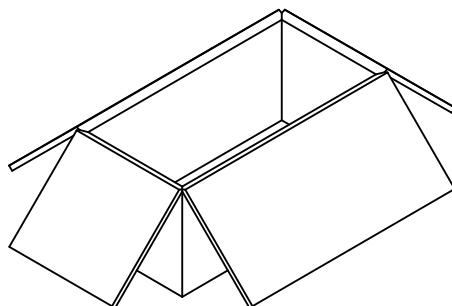
SEE SHEET 1 EC NO: URF2011-0345 2010/11/10 DRWINELIN CHKD: APPR:MHUANG 2010/12/31	QUALITY SYMBOLS ▽=0 ▽=0	GENERAL TOLERANCES (UNLESS SPECIFIED)		DIMENSION STYLE	SCALE	DESIGN UNITS	THIRD ANGLE PROJECTION
		mm	INCH	MM/IN	METRIC	☉	
		DRAWN BY DATE		TITLE		MOLEX INCORPORATED	SHEET NO. 3 OF 3
		CHECKED BY DATE		SMB JACK, FAKRA R/A PCB, 50 OHMS WITH DOWN LATCH SMB-J/PCB/RA			
APPROVED BY DATE		MATERIAL NO.		DOCUMENT NO.			
ANGULAR ± 2 °		DRAFT WHERE APPLICABLE MUST REMAIN WITHIN DIMENSIONS		SD-73403-554			
SIZE C		THIS DRAWING CONTAINS INFORMATION THAT IS PROPRIETARY TO MOLEX INCORPORATED AND SHOULD NOT BE USED WITHOUT WRITTEN PERMISSION					



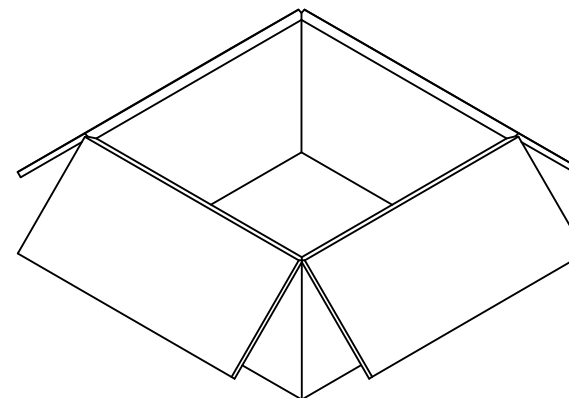
P/N 73403-554X



54 SET PER TRAY  
TRAY P/N 89707-0220  
360\*165\*18.6



540 SET PER INNER  
CARTON BOX  
P/N 96707-0001  
363\*176\*176



1080 SET PER OUTER  
CARTON BOX  
P/N 96708-0005  
383\*386\*196

<b>ADDED PACKAGE DIM.</b> EC NO: URF2011-0345 2010/11/12 DRW: ELIN CHKD: APPR: MHUANG 2010/12/31	QUALITY SYMBOLS  	GENERAL TOLERANCES (UNLESS SPECIFIED)		DIMENSION STYLE <b>MM/IN</b>	SCALE DESIGN UNITS <b>METRIC</b>	THIRD ANGLE PROJECTION
		4 PLACES ± --- ± --- 3 PLACES ± --- ± --- 2 PLACES ± --- ± --- 1 PLACE ± --- ± ---	mm INCH ± --- ± --- ± --- ± --- ± --- ± --- ± --- ± ---	DRAWN BY ELIN DATE 2010/02/04	TITLE <b>PACKAGING FOR 73403-554*</b>	
REV: 2	DESCRIPTION	ANGULAR ± 2 °		CHECKED BY KERRIE DATE 2010/02/04	APPROVED BY MHUANG DATE 2010/12/31	MOLEX INCORPORATED
DRAFT WHERE APPLICABLE MUST REMAIN WITHIN DIMENSIONS				MATERIAL NO. -----	DOCUMENT NO. <b>SD-73403-554-PKG</b>	SHEET NO. <b>1 OF 1</b>
SIZE C				THIS DRAWING CONTAINS INFORMATION THAT IS PROPRIETARY TO MOLEX INCORPORATED AND SHOULD NOT BE USED WITHOUT WRITTEN PERMISSION		