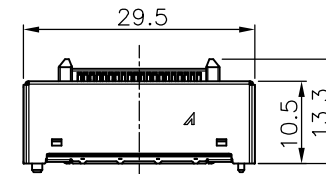
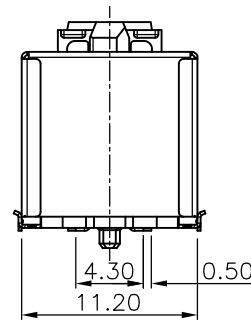
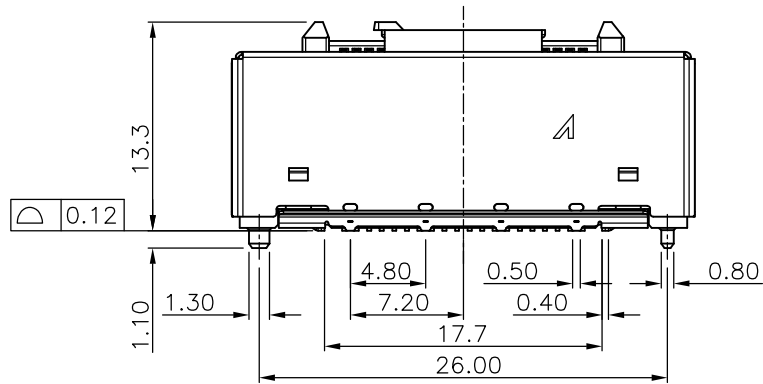


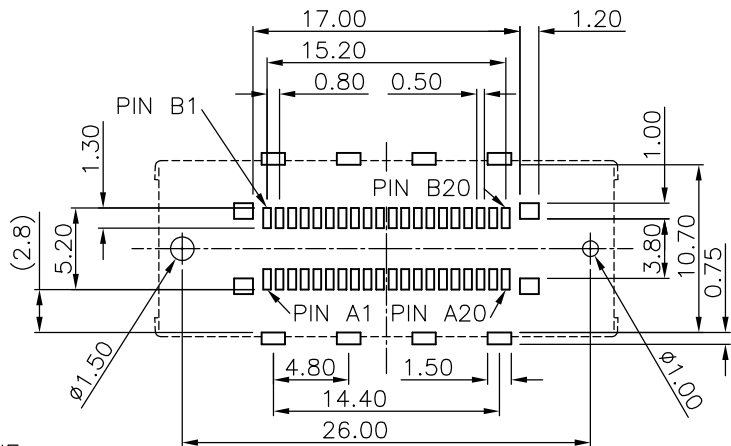
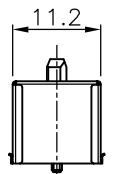
NOTES:

- MATERIAL:
 - HOUSING: THERMOPLASTIC, HIGH TEMP., UL94V-0; COLOR: BLACK.
 - COVER: THERMOPLASTIC, HIGH TEMP., UL94V-0; COLOR: WHITE.
 - CONTACT: COPPER ALLOY
 - FITTING NAIL: COPPER ALLOY
 - SHELL: SUS
- FINISH:
 - CONTACT: SEE ORDER INFORMATION.
 - UNDERPLATING: 50~100u" NICKEL OVERALL.
- REFLOW SOLDER CAPABLE TO 260°C PER ACES SPEC.
- SPEC. PLS. REFER TO PS-51079-xxxxx-xxx
- PACKAGE PLS. REFER TO 51080-xxxCR-00
- MATING CONNECTOR P/N: 51081-xxxxx-xxx
- PART NUMBER
51082-XXX X X-001

CKTS 040.40PIN PACK
CONTACT PLATING 2.GOLD FLASH
7.TAPE&REEL WITH COVER

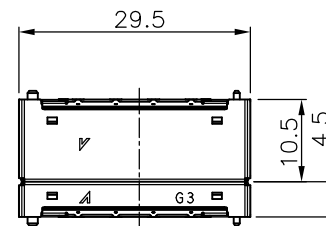


STEEL ASSEMBLY DIMENSIONS
Scale 1:1

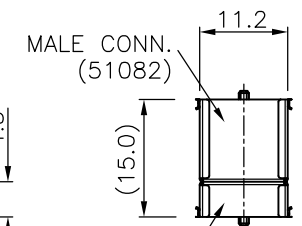


PROPOSAL DRAWING

RECOMMEND PCB LAYOUT
GENERAL TOLERANCE ±0.05



MATING CONN.



FEMALE CONN. (51081)

PIN DEFINE

Pin	1	2	3	4	5	6	7	8	9	10	11	12	13	14	15	16	17	18	19	20
SIDE A	G	G	S	S	G	G	S	S	G	G	S	S	G	G	S	S	G	G	-	-
SIDE B	-	-	G	G	S	S	G	G	S	S	G	G	S	S	G	G	S	S	G	G

QUALITY SYMBOLS MAJOR Ⓢ CRITICAL Ⓢ	DRAWN BY CHEN CHUN YUAN 20/05/08	DATE 20/05/08	
GENERAL TOLERANCES (UNLESS SPECIFIED) X. ±0.5 .X ±0.25 .XX ±0.15 .XXX ±0.1 ANGLES ±2°	CHECKED BY TSO I HUNG 20/05/08	DATE 20/05/08	
	APPROVED BY WANG CHUN SHENG 20/05/08	DATE 20/05/08	
UNITS mm	SCALE 2:1	SHEET NO. 2 OF 2	SIZE A4
			RFQ NO. N/A
			REV NO. 1
			DWG NO. 51082-xxxxx-xxx