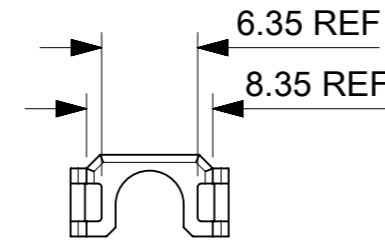
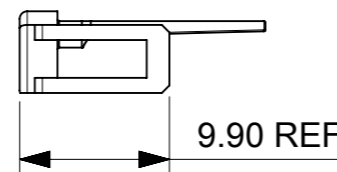
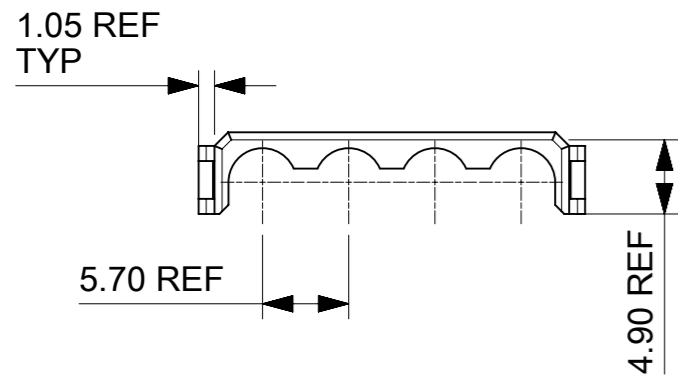
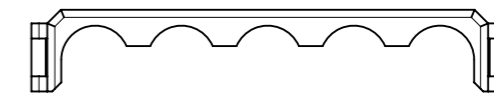


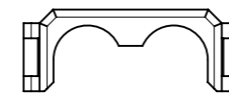
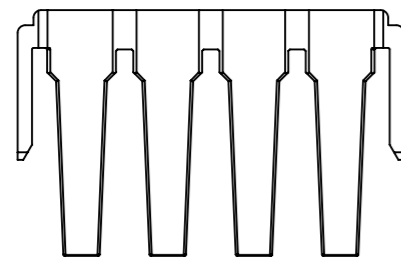
CIRCUIT		PART NO.	DIM A	COLOR
SINGLE ROW	DUAL ROW			
1	2	105415-0001	8.35	NATURAL
2	4	105415-0002	12.05	
3	6	105415-0003	17.75	
4	8	105415-0004	23.45	
5	10	105415-0005	29.15	
6	12	105415-0006	34.85	
7	N/A	105415-0007	40.55	
8	N/A	105415-0008	46.25	



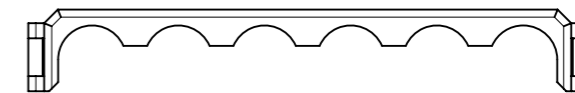
SR-1CKT&DR-2CKT



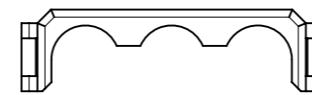
SR-5CKT&DR-10CKT



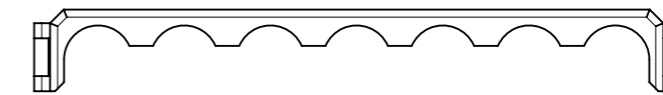
SR-2CKT&DR-4CKT



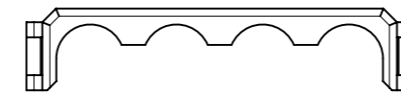
SR-6CKT&DR-12CKT



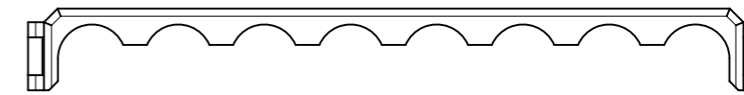
SR-3CKT&DR-6CKT



SR-7CKT



SR-4CKT&DR-8CKT



SR-8CKT

NOTES:

- MATERIAL:
NYLON, UL 94V-0 AND GLOW WIRE CAPABLE PER IEC60335-1,
COLOR: NATURAL
- FINISH: NOT APPLICABLE.
- PRODUCT SPECIFICATION: 1054171000-PS/1720631000-PS.
- PACKAGING: BULK PACK PER 1054150001
- PART USED WITH MOLEX SERIES NUMBERS
TPA-CAPABLE TERMINAL: 76823, 172063, 105417, 105418
RECEPTACLE HOUSING: 171692,200456
PLUG HOUSING: 105411,213814,213815
- APPLICATION SPECIFICATION: 768232000-AS.
- PARTS CONFORM TO CLASS B REQUIREMENTS OF COSMETIC SPECIFICATION PS-45499-002 WITH THE EXCEPTION OF DISCOLORATION MEETS CLASS "C" REQUIREMENTS.

SYMBOLS DIMENSION UNITS: mm SCALE: 2:1 GENERAL TOLERANCES (UNLESS SPECIFIED): ANGULAR TOL ± 0.5° 4 PLACES ± 3 PLACES ± 2 PLACES ± 0.25 1 PLACE ± 0.35 0 PLACES ± DRAFT WHERE APPLICABLE MUST REMAIN WITHIN DIMENSIONS THIRD ANGLE PROJECTION	THIS DRAWING CONTAINS INFORMATION THAT IS PROPRIETARY TO MOLEX ELECTRONIC TECHNOLOGIES, LLC AND SHOULD NOT BE USED WITHOUT WRITTEN PERMISSION		CURRENT REV DESC:			
	EC NO: 628261		2019/11/28			MEGA-FIT TPA SR(2-8CKT),DR(2-12CKT)
	DRWN: ALUO02		2019/12/11			
	CHK'D: AYIN		2019/12/11			
APPR: AYIN		2019/12/11		PRODUCT CUSTOMER DRAWING		
INITIAL REVISION:		DOCUMENT NUMBER		DOC TYPE		
DRWN: YXZHENG		1054150001		PSD		
APPR: YXZHENG		2017/08/22		DOC PART		
2018/08/06		000		REVISION		
DRAFT WHERE APPLICABLE MUST REMAIN WITHIN DIMENSIONS		THIRD ANGLE PROJECTION		SHEET NUMBER		
DRAWING		SERIES		MATERIAL NUMBER		
A3-SIZE		105415		CUSTOMER		
SEE TABLE		GENERAL MARKET		1 OF 1		