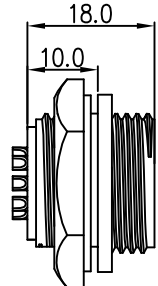


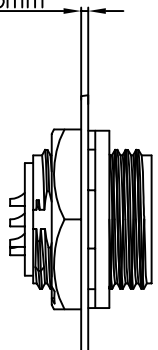
| REV. | ECN NO. | DESCRIPTION | SIGN | DATE |
|------|---------|-----------------|------|------------|
| C1 | N/A | INITIAL DRAWING | Liu | 2020/05/16 |



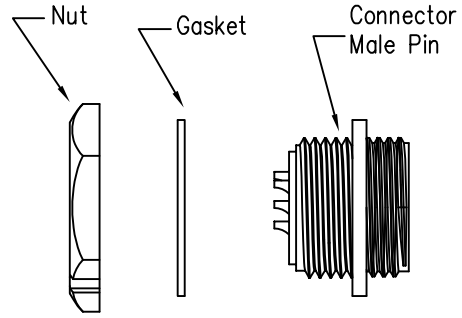
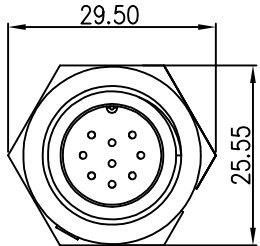
Recommended Panel Cut-Out



Panel T: Max 3.5mm



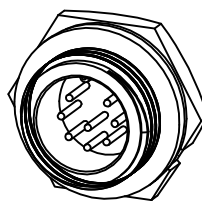
23XXX515-03
Pin Number



- Specification:
1. Operation Temperature: $-45^{\circ}\text{C} \sim 105^{\circ}\text{C}$.
 2. Insulation Resistance: $100\text{M}\Omega$ at DC500V.
 3. Contact Resistance: $<10\text{m}\Omega$.
 4. Withstand Voltage: 1300V AC
 5. Operating Current: 5A
 6. Operating Voltage: DC 60V
 7. Waterproof Rate: IP67 (Mated)
 8. Housing: Nylon, Black
 9. Male Pin: Copper Alloy, Gold Plated
 10. Gasket: Silicon Gray
 11. Panel Nut: Nylon, Black
 12. Torque Rate: $0.8 \sim 1.0\text{N} \cdot \text{m}$
 13. RoHS Compliant.
 14. UL Compliant. (Only 7Pin & 8Pin)
 15. Mating Cap P/N: 806-00021-00

| | | |
|------------------|------------------|------------------|
| | | |
| 7 Pin | 8 Pin | 9 Pin |
| P/N: 23007515-03 | P/N: 23008515-03 | P/N: 23009515-03 |

Pin Assignments Front View



CHOGORI

| | | | | | |
|--|--------------|---|------------------------|----------------------|--------------------|
| UNIT: mm | | DESCRIPTION Middle Series Screw Type Rear Mount With Male Pin | PART NO 23XXX515-03 | DRAWN BY Liu | DATE 2020/05/16 |
| TOLERANCE .X ±0.25 .XX ±0.15 .XXX ±0.05 ANGLES ±1° | SCALE 1:1 | SHEET 1 OF 1 | DWG NO | CHECKED BY Mo | DATE 2020/05/16 |
| REV. C1 | SIZE A4 | * : Inspection Item | CUSTOMER | APPROVED BY Adley | DATE 2020/05/16 |

THIS INFORMATION IS CONFIDENTIAL AND IS DISCLOSED TO YOU ON CONDITION THAT NO FURTHER DISCLOSURE IS MADE BY YOU TO OTHER THAN CHOGORI PERSONNEL WITHOUT AUTHORIZATION FROM CHOGORI CORP.