

# HMEP - SERIES

BUL86265

REV. B

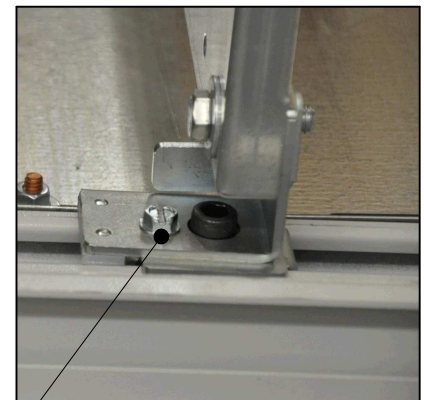
## ASSEMBLY INSTRUCTIONS FOR HME INNER PANEL



A) Place the panel supports at any desired point along the strut channels.

B) Secure the bottom panel supports and the upper panel mounting brackets into place. To make sure the inner panel is straight, line up the back face of the upper mounts to the back face of the bottom supports. Use the notches in the frame for guidance.

C) Place the bottom inner panel brackets onto the rails and slide the bottom of the panel until it hits the bottom supports.



D) Continue to push the top of the panel until the collar studs protrude through the panel mounting holes. Ensure the pins protrude through the bottom of the panel supports.

E) Secure the panel to the top panel studs.

F) Install hex screw locking feature once panel is in its final location.

ITEM	DESCRIPTION	QTY
1	1/4-20x1/2" HEX SLOT BOLT	2

