

May 29, 2020

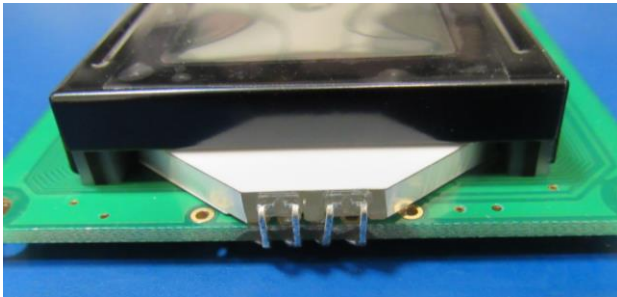
Engineering Change Notification

This notice is to inform you of a change to the following LCD product:

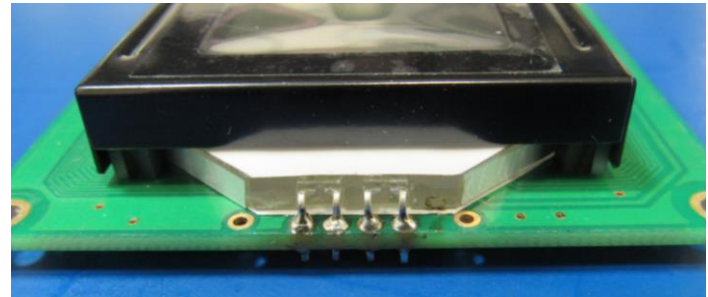
NHD-0420DZ-FSW-FBW

The backlight has been redesigned to improve the connection method for anode and cathode. Old backlight design used leads that wrapped around the PCB. New backlight design uses thru-hole leads.

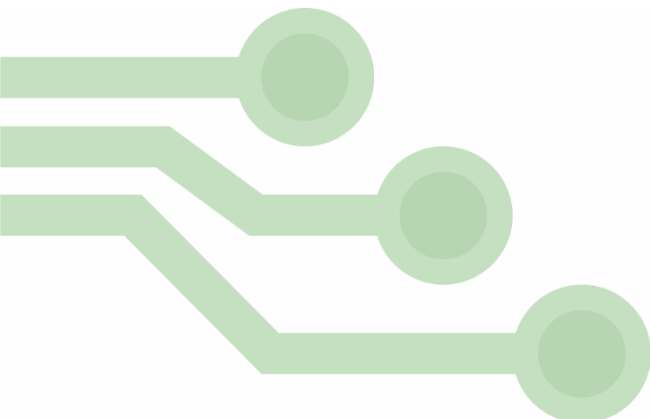
OLD DESIGN

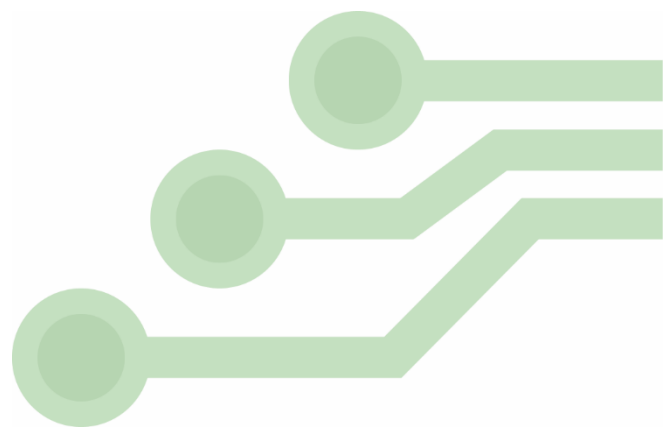


NEW DESIGN



The new displays will be labeled with a **Rev1A** identifier after the part number.





We understand that every customer's application is unique, and therefore we recommend our customers request new samples to test.

Please visit www.newhavendisplay.com or email nhtech@newhavendisplay.com for further information or assistance with this change.

