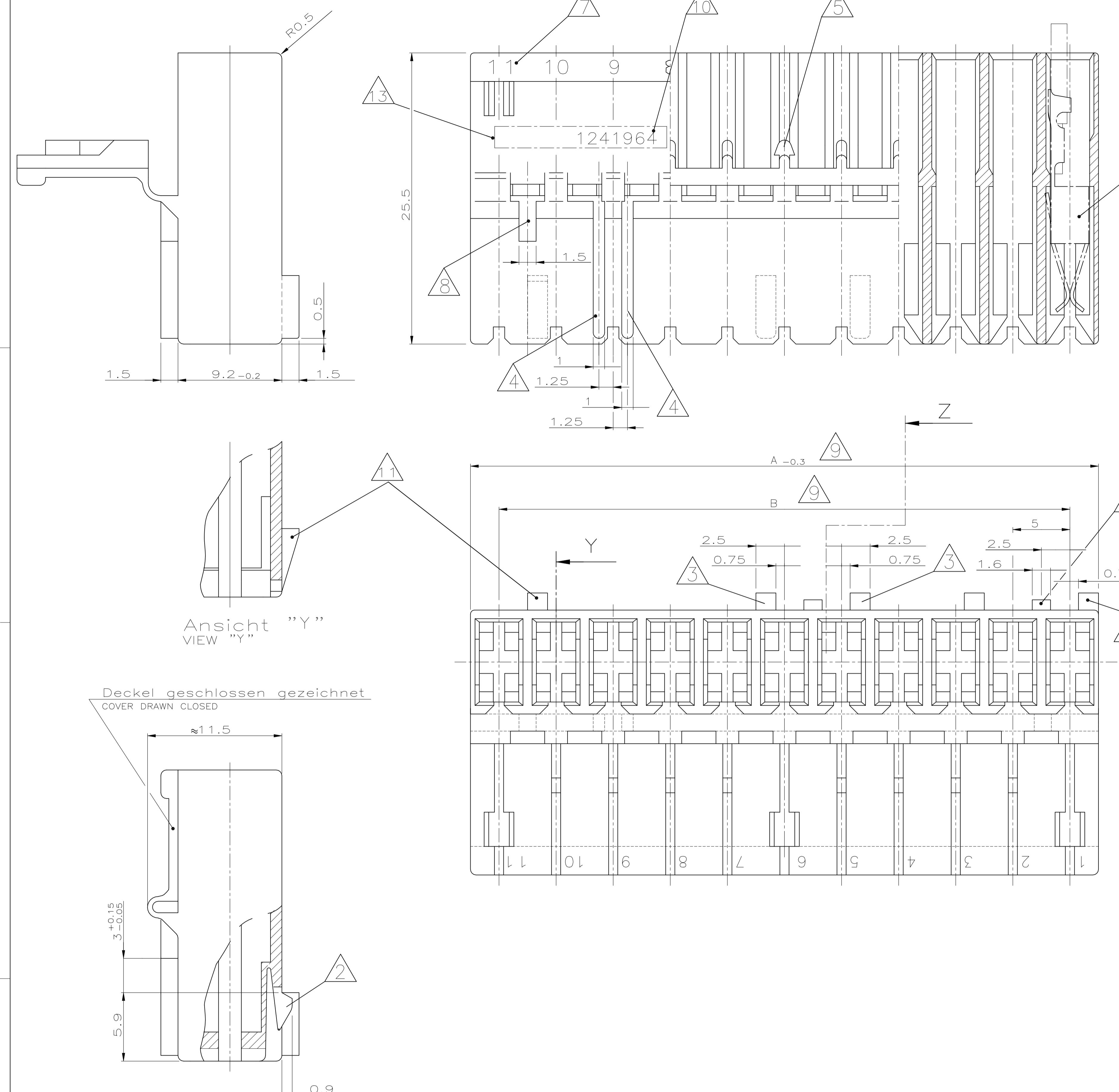


REVISIONS				
REV	DATE	DESCRIPTION	BY	APPV
A19	31MAY2022	ECR-22-140431	TL	FL

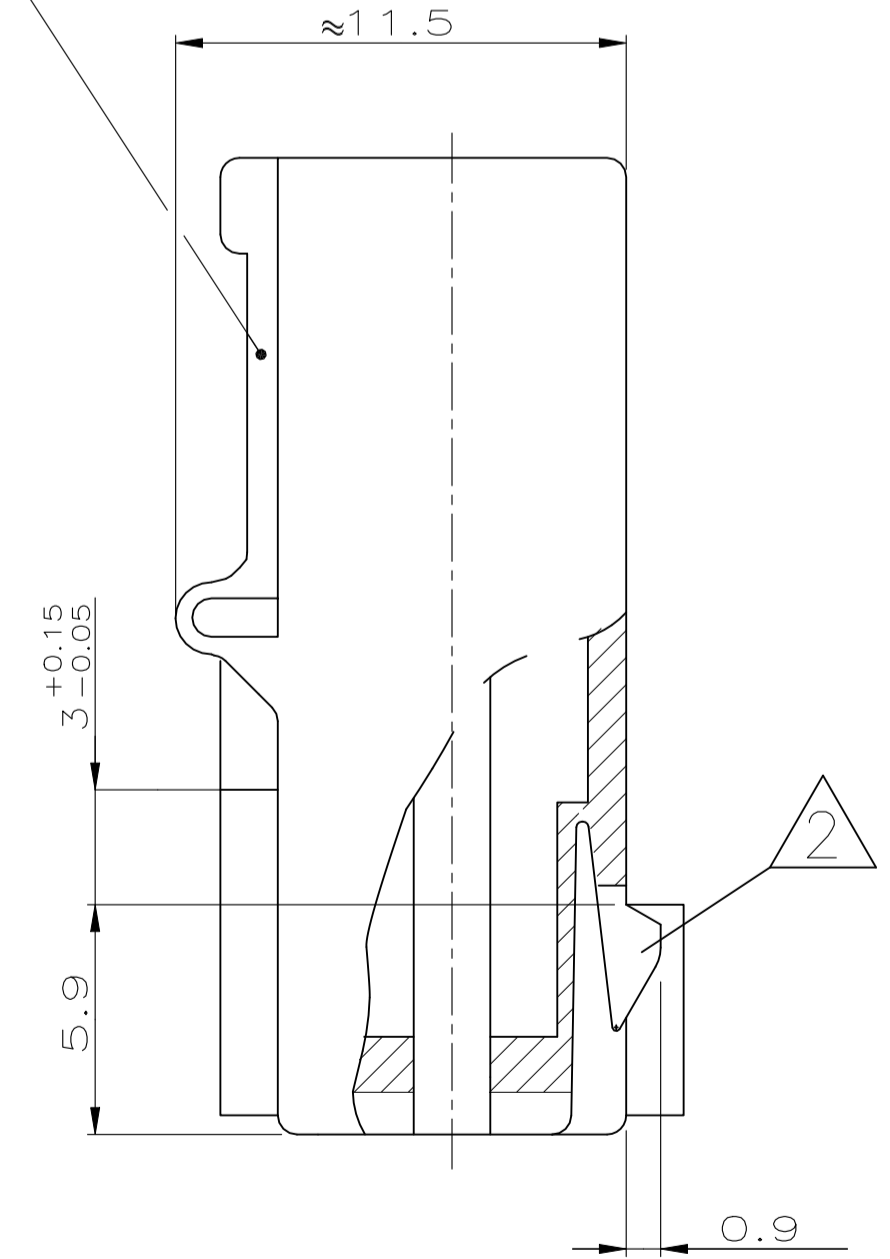


Bemerkungen
NOTES

- 1 Kammer geeignet für AMP Timer-Kontakte: PN 926965
CAVITY SUITABLE TO AMP TIMER-CONTACTS: PN 926973
PN 926005
PN 926006
PN 927833
PN 927837
- 2 Rasthaken zwischen Kammer Nr. ... (siehe Blatt 2 von 2)
LOCKING LATCH BETWEEN CAVITY NO. ... (SEE SHEET 2 OF 2)
- 3 Kodierrippen nach unten (Lage "c") oder oben (Lage "d")
versetzt, bei Kammer Nr. ... (siehe Blatt 2 von 2)
KEYING RIB POSITION "c" OR POSITION "d",
AT CAVITY NO. ... (SEE SHEET 2 OF 2)
- 4 Polarisierungsrippen durchgehend bis Scharnier, nach unten (Lage "a")
oder oben (Lage "b") versetzt, bei Kammer Nr. ... (siehe Blatt 2 von 2)
POLARIZATION RIB GO THROUGH TO HINGE, POSITION "a" OR
"b", AT CAVITY NO. ... (SEE SHEET 2 OF 2)
- 5 Verrastung für Deckel bei Kammer Nr. ... (siehe Blatt 2 von 2)
LOCKING DEVICE FOR COVER AT CAVITY NO. ... (SEE SHEET 2 OF 2)
- 6 Kodierrippen bei erster Kammer, Lage "c", und letzter Kammer, Lage "d",
bündig mit Gehäuseaußenkante
KEYING RIBS AT THE FIRST CAVITY, POSITION "c", AND THE LAST CAVITY, POSITION "d",
FLUSH TO THE EDGE OF THE CONNECTOR
- 7 Kammernummer
CAVITY NUMBER
- 8 Tiefenanschlag zwischen Kammer Nr. 1 und 2, ebenfalls
zwischen der letzten und vorletzten Kammer
MATING STOP BETWEEN CAVITY NO. 1 AND 2, ALSO
BETWEEN THE LAST AND THE LAST BUT ONE CAVITY
- 9 Maß A und Maß B siehe Blatt 2 von 2
DIMENSION A AND DIMENSION B SEE SHEET 2 OF 2
- 10 TE PART NUMBER (OPTIONAL)
- 11 Angeschrägte Kodierrippen nach unten (Lage "c") oder oben (Lage "d")
versetzt, bei Kammer Nr. ... (siehe Blatt 2 von 2)
SWAGED KEYING RIB POSITION "c" OR POSITION "d",
AT CAVITY NO. ... (SEE SHEET 2 OF 2)
- 12 Material entspricht den Anforderungen der EN 60335 (incl. glow wire test 750°C,
ohne Flamme
MATERIAL CORRESPONDS TO REQUIREMENT EN 60335 (INCL.GLOW WIRE TEST 750°C,
NO FLAME)
- 13 AREA FOR TYCO ELECTRONICS LOGO ACC. TO SPEC. 202-36
Bereich für TYCO ELECTRONICS Logo nach Spec. 202-36
- 14 Passender TE Gegenstecker: (siehe Stückliste)
MATED WITH TE CONNECTOR: (SEE PARTS LIST)
- 15 Generell passende Flachsteckerwanne siehe RAST5 Vorgabe
GENERAL SUITABLE TAB HEADER HOUSING SEE RAST5 PERFORMANCE
- 16 Leiterplattenanschluß siehe Zeichnung 88-9935-2
CONNECTION TO THE PC BOARD SEE DRAWING 88-9935-2
- 17 PRELIMINARY PART NOT RELEASED FOR PRODUCTION
- 18 MATERIAL ACC. TO UL94-V0 AND GWEPT
750°C NO FLAME

Ansicht "Y"
VIEW "Y"

Deckel geschlossen gezeichnet
COVER DRAWN CLOSED



Ansicht "Z"
VIEW "Z"

9 DOUBLE SOURCE RESIN: ALTERNATIVE RESIN UNDER APPROVAL

Tabelle mit Ausführungsvarianten
und Bestellnummern auf Blatt 2 von 2
LIST WITH DIFFERENT STYLINGS AND
PARTNUMBERS SEE SHEET 2 OF 2

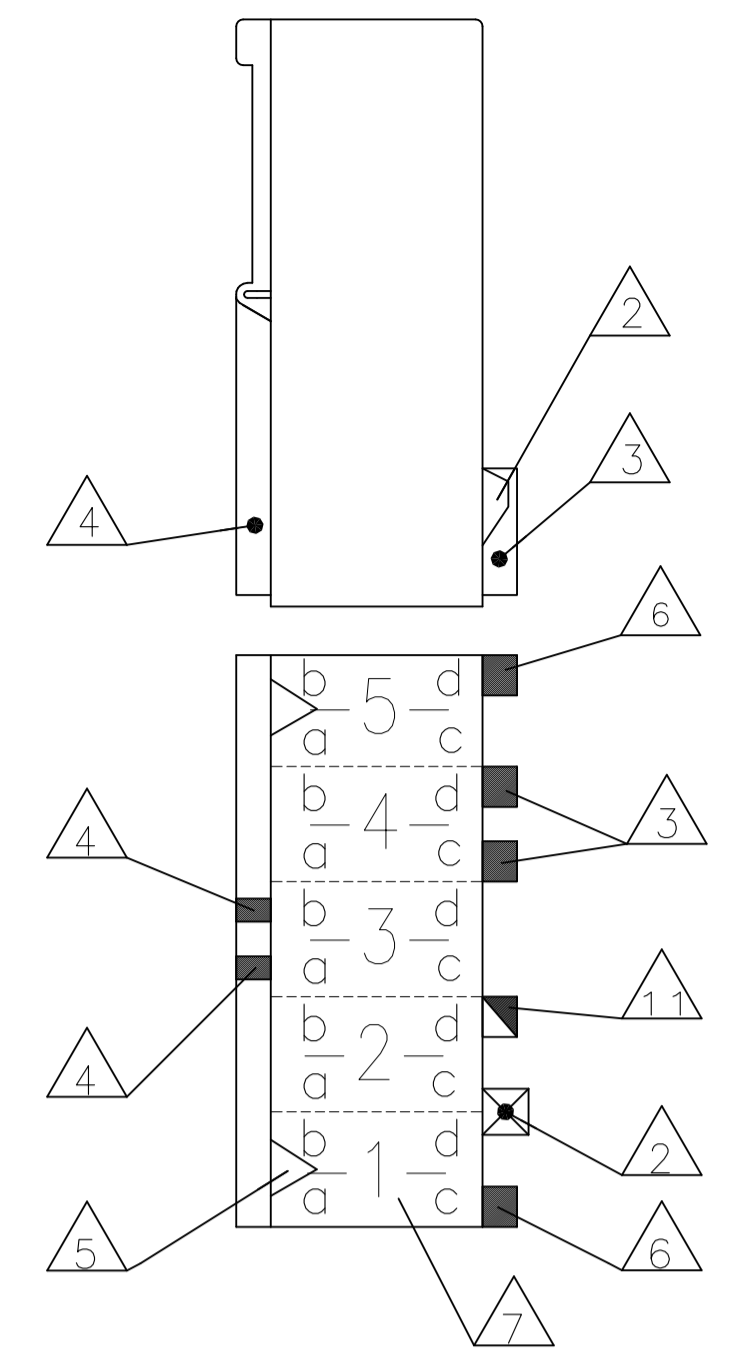
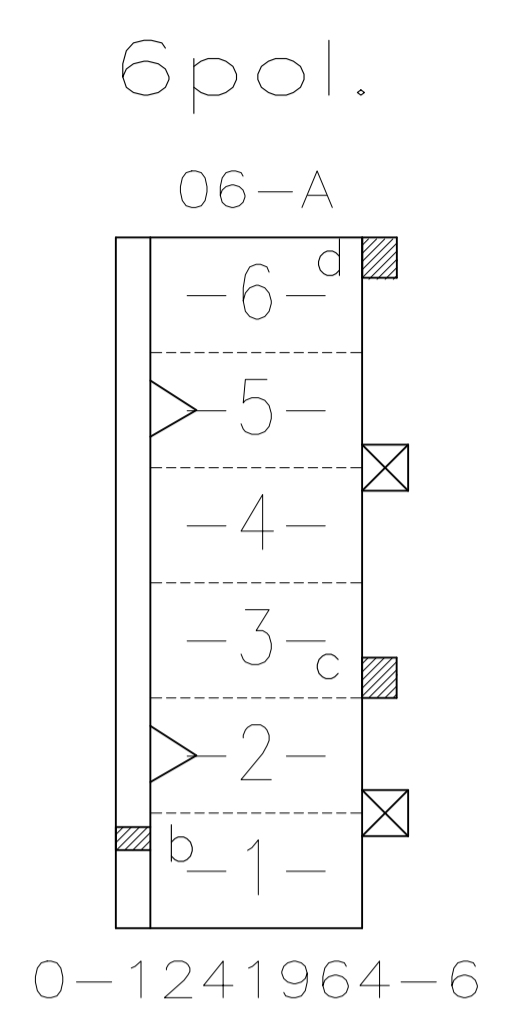
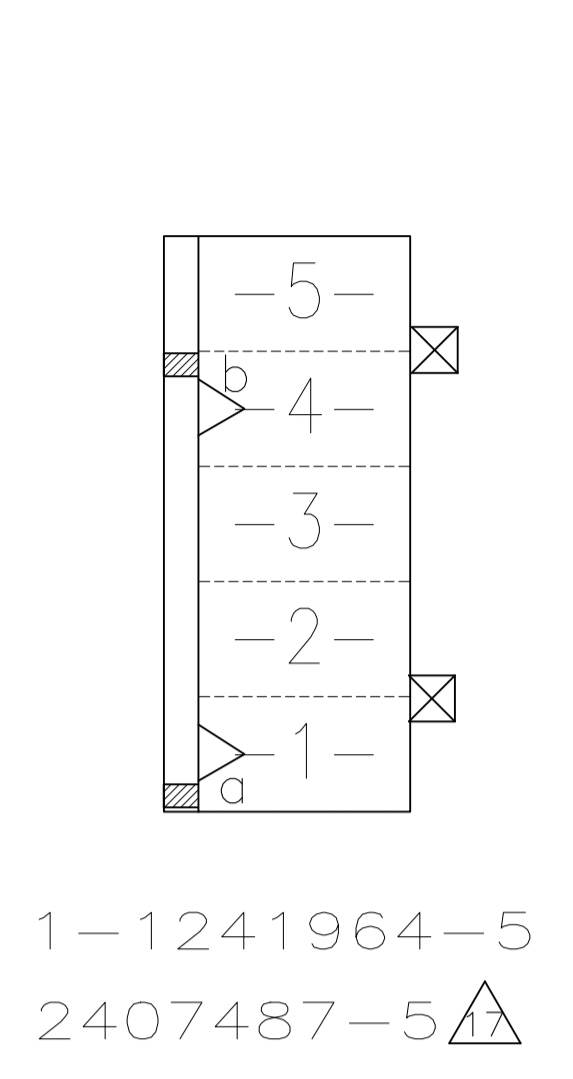
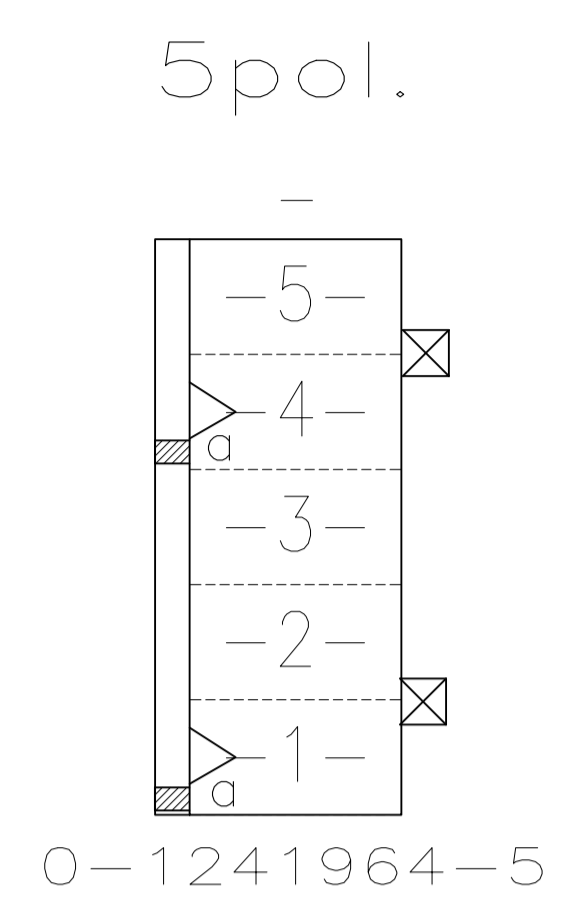
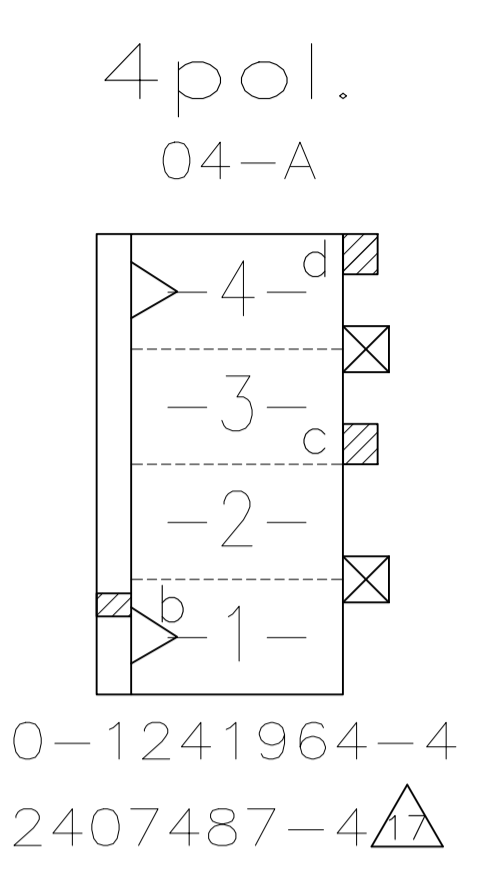
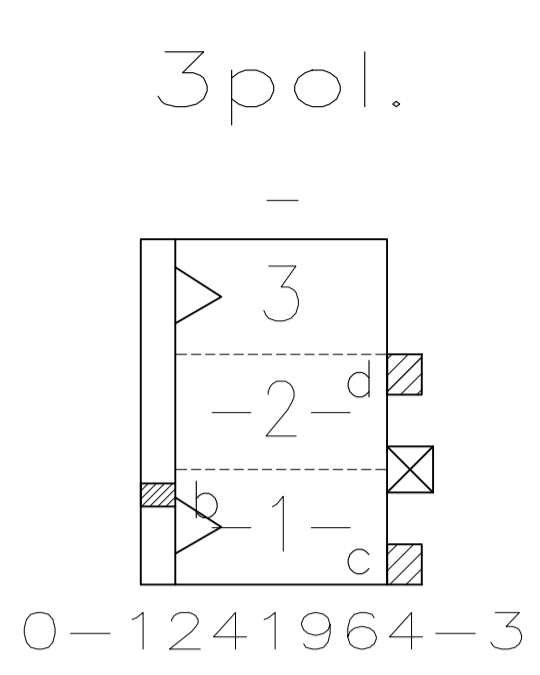
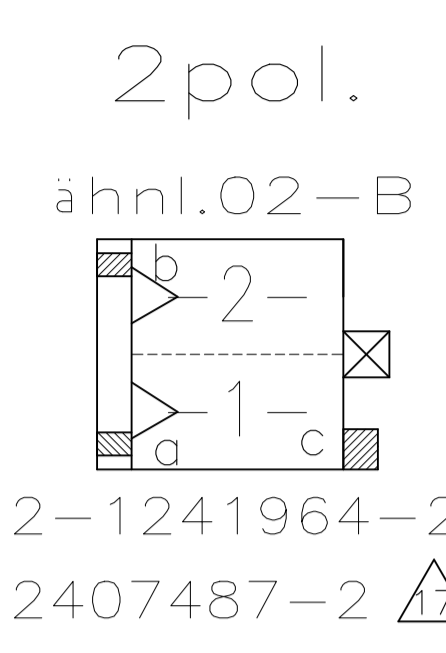
CUSTOMER PART NO	AMP PART NO	REV.	PCS.	MATERIAL	SURFACE COLOR	DESCRIPTION	ITEM NO
-	-	-	-	-	-	-	-
-	-	-	-	-	-	-	-
-	-	-	-	-	-	-	-

THIS DRAWING IS A CONTROLLED DOCUMENT.

<p>2.3 2.3 2.3 2.3</p> <p>0. PL ± 0.2mm</p> <p>1. PL ± 0.2mm</p> <p>2. PL ± 0.2mm</p> <p>3. PL ± 0.2mm</p> <p>4. PL ± 0.2mm</p> <p>ANGLES ± #1</p>	<p>DATE: 26-NOV-02</p> <p>BY: Mahrke, B</p> <p>DATE: 29-NOV-02</p> <p>BY: Stredak, F</p> <p>DATE: 30-NOV-02</p> <p>BY: Bleicher, B</p>	<p>NAME: 2-11 POS. STANDARD-TIMER HOUSING WITH INTERIOR LOCKING, PITCH 5mm</p> <p>PRODUCT SPEC: 108-18049-1</p> <p>APPLICATION SPEC: 2-11 pos. Standard-Timer Gehäuse mit Innenverrastung, RAST5</p>	<p>DATE: 26-NOV-02</p> <p>BY: Mahrke, B</p> <p>DATE: 29-NOV-02</p> <p>BY: Stredak, F</p> <p>DATE: 30-NOV-02</p> <p>BY: Bleicher, B</p>
----------------------------------------------------------------------------------------------------------------------------------------------------	----------------------------------------------------------------------------------------------------------------------------------------	------------------------------------------------------------------------------------------------------------------------------------------------------------------------------------------------------	----------------------------------------------------------------------------------------------------------------------------------------

SCALE: 5:1 SHEET 1 OF 2 REV A19

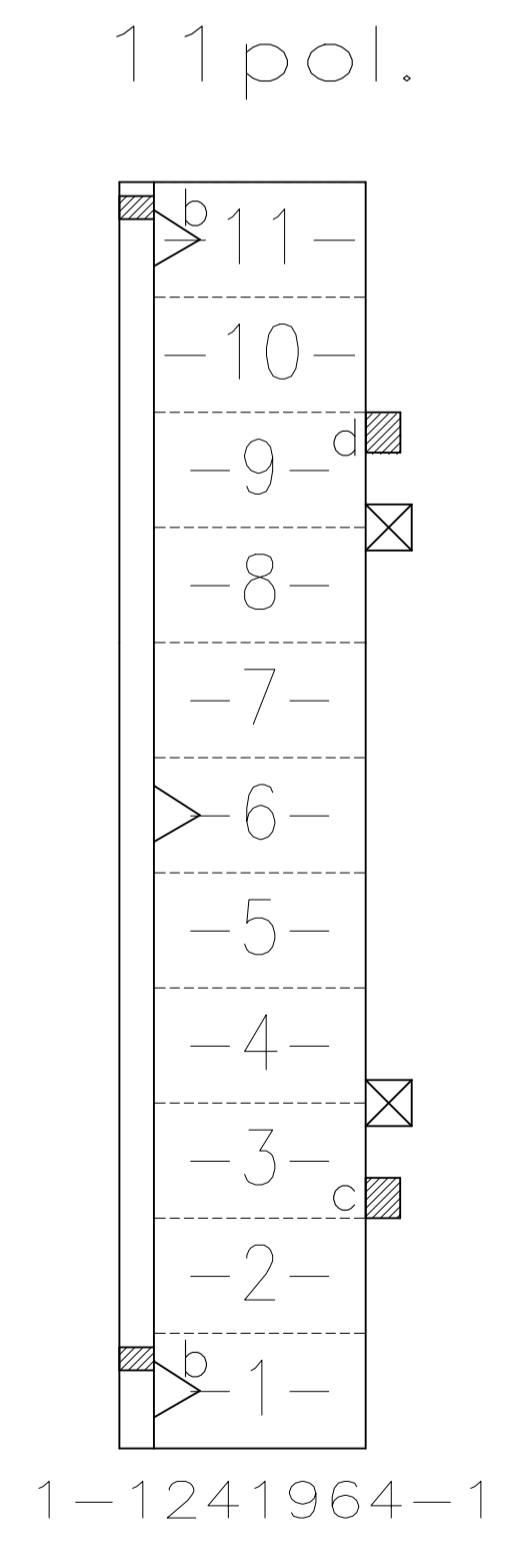
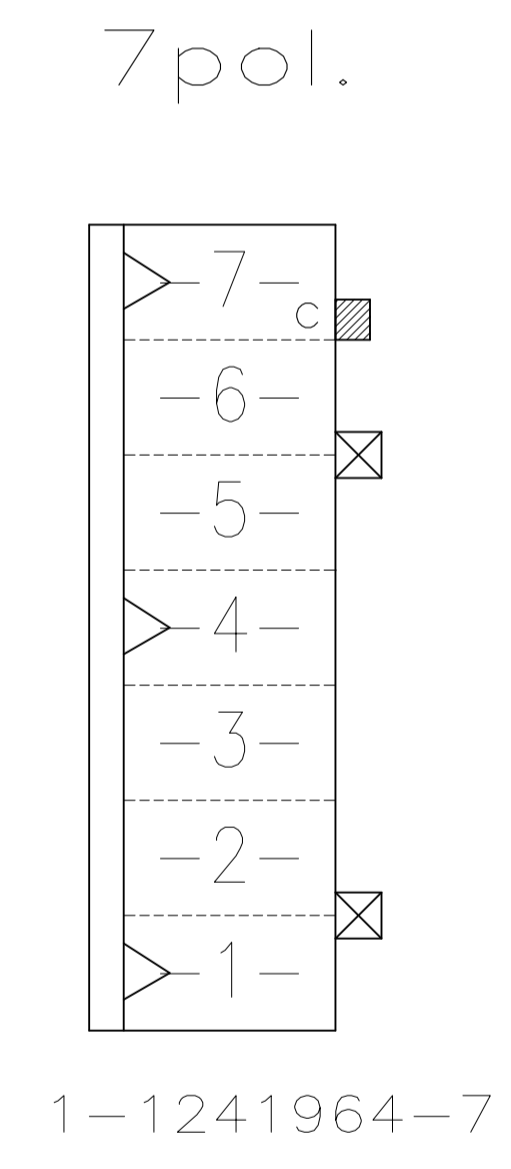
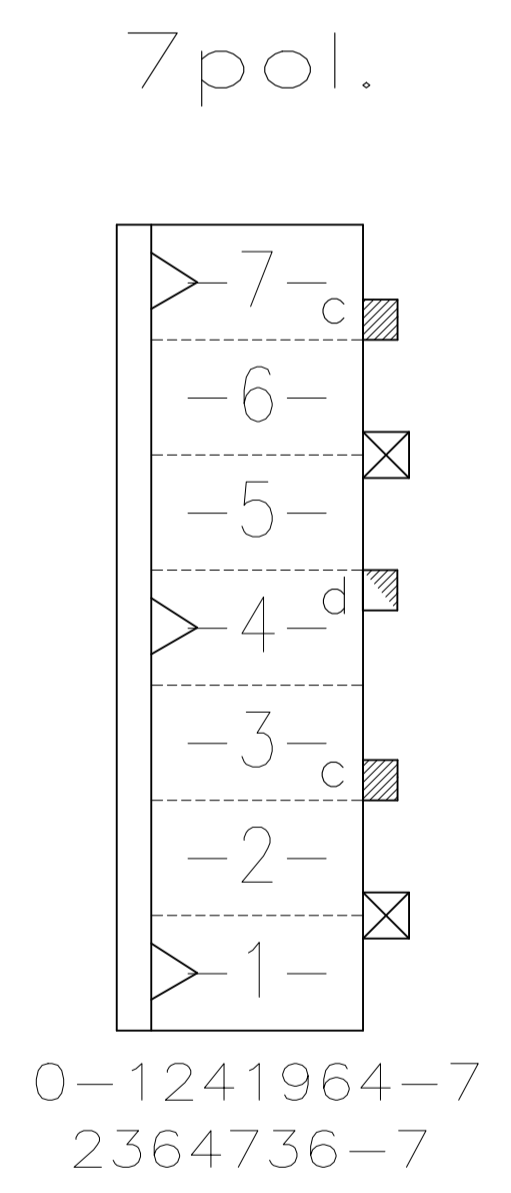
REVISIONS					
REV	DATE	DESCRIPTION	BY	CHK	APPV
-	-	SEE SHEET 1	-	-	-



Darstellung:
Lage der Kodier- und
Polarisierungsrippen und
Rastfedern am Gehäuse

DESCRIPTION:
POSITION OF KEYING RIB AND THE
LOCKING LATCH AT THE HOUSINGS

TE PART NUMBER (OPTIONAL)



TE PART NO.	POS.	DIM A	DIM B	COLOUR	MATERIAL	MATED WITH	
2407487-5	5	25	20	NATURE/natur	PA66 UL94-V0 & GWEPT 750°C n.f.		
2407487-4	4	20	15	NATURE/natur			
2407487-2	2	10	5	NATURE/natur			
2364736-7	7	35	30	BLUE	PA66 UL94-V0 & GWEPT 750°C n.f.		
1-1241964-1	11	55	50	NATURE/natur	PA6 UL94V-2		
1-1241964-7	7	35	30	NATURE/natur			
0-1241964-7	7	35	30	NATURE/natur			
0-1241964-6	6	30	25	NATURE/natur			
1-1241964-5	5	25	20	NATURE/natur			
0-1241964-5	5	25	20	NATURE/natur			
0-1241964-4	4	20	15	NATURE/natur			
0-1241964-3	3	15	10	NATURE/natur			
2-1241964-2	2	10	5	NATURE/natur			
Bestell-Nr.	Pol-zahl	Maß A	Maß B	Farbe		Material	Gegenstecker
PART NO.	POS.	DIM A	DIM B	COLOUR		MATERIAL	MATED WITH

THIS DRAWING IS A CONTROLLED DOCUMENT.

DIMENSIONS: mm	TOLERANCES UNLESS OTHERWISE SPECIFIED:	DIN 26-NOV-02	Mahnke, B
0. PLC ± -	1. PLC ± 0.2mm	29-NOV-02	Stredak, F
2. PLC ± -	3. PLC ± -	30-NOV-02	Fleischer, B
4. PLC ± -	ANGLES ± 1°		

NAME: 2-11 POS. STANDARD-TIMER HOUSING WITH INTERIOR LOCKING, PITCH 5mm
APPLICATION SPEC: 108-18049-1

SIZE: A1 CAGE CODE: 00779 DRAWING NO: 1241964
WEIGHT: 0

CUSTOMER DRAWING SCALE: 5:1 SHEET: 2 OF 2 REV: A19