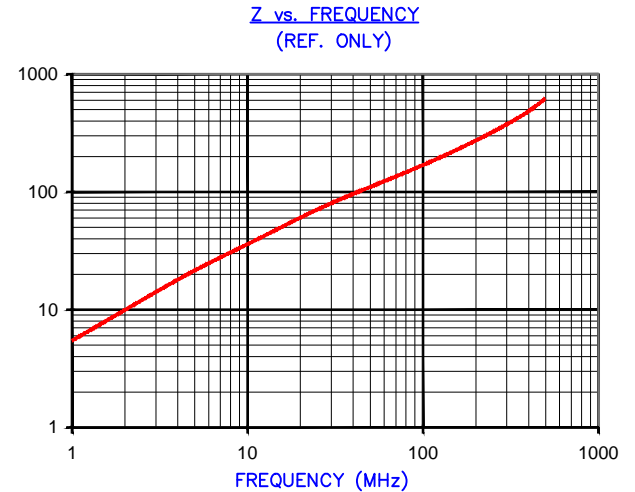


DETAIL "A"
CHAMFER
SCALE=6:1



IMPEDANCE (Z)			
Frequency	25 MHz	100 MHz	300 MHz
Nominal (REF)	78 Ω	162 Ω	370 Ω
Minimum	- Ω	130 Ω	- Ω



AGILENT E4991A Impedance/Material Analyzer
HP 16092A-Test Fixture REF. 3031

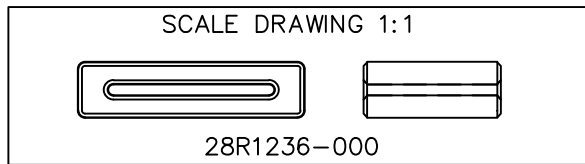
FERRITE CORE DIMENSIONS (SPEC): mm [in]

A	31.40 [1.236]	+ 0.51 [.020]
B	23.00 [.906]	+ 0.38 [.015]
C	19.00 [.748]	+ 0.64 [.025]
D	7.75 [.305]	+ 0.38 [.015]
E	1.50 [.059]	+ 0.51 [.020]

WEIGHT/1000 19.39 kgs [42.75 Lbs]

NOTES: UNLESS OTHERWISE SPECIFIED

1. COSMETIC SPECIFICATION REFER TO WI-QA-038.
2. NO WATER SPOTS OR STAINS ARE ALLOWED ON THIS PART.



DIMENSIONS ARE IN mm[INCHES].				This print is the property of Laird Tech. and is loaned in confidence subject to return upon request and with the understanding that no copies shall be made without the written consent of Laird Tech. All rights to design or invention are reserved.							
REV	DESCRIPTION	DATE	INT								
M	UPDATE COMPANY LOGO	05/28/15	QIU	PROJECT/PART NUMBER: 28R1236-000		REV	M	DRAWN BY:	DTR		
L	UPDATE MIN Z SPEC AND COMPANY LOGO	07/27/07	JRK			DATE:	01/28/98	SCALE:	2 : 1	MATERIAL:	FERRITE
K	UPDATE MIN Z SPEC ADD TEST REF	5/6/05	JRK			CAD #	28R1236-000-M	TOOL #	R1236		
J	ADD NOTE TO ADDRESS WATER SPOTS AND STAINS ON THIS PART	12/03/03	TMB								
H	UPDATE PRINT FORMAT CHANGE CURVE FORMAT ADD IMPEDANCE (Z) VALUES TO UPPER RIGHT CORNER OF PRINT	03/11/03	TMB								