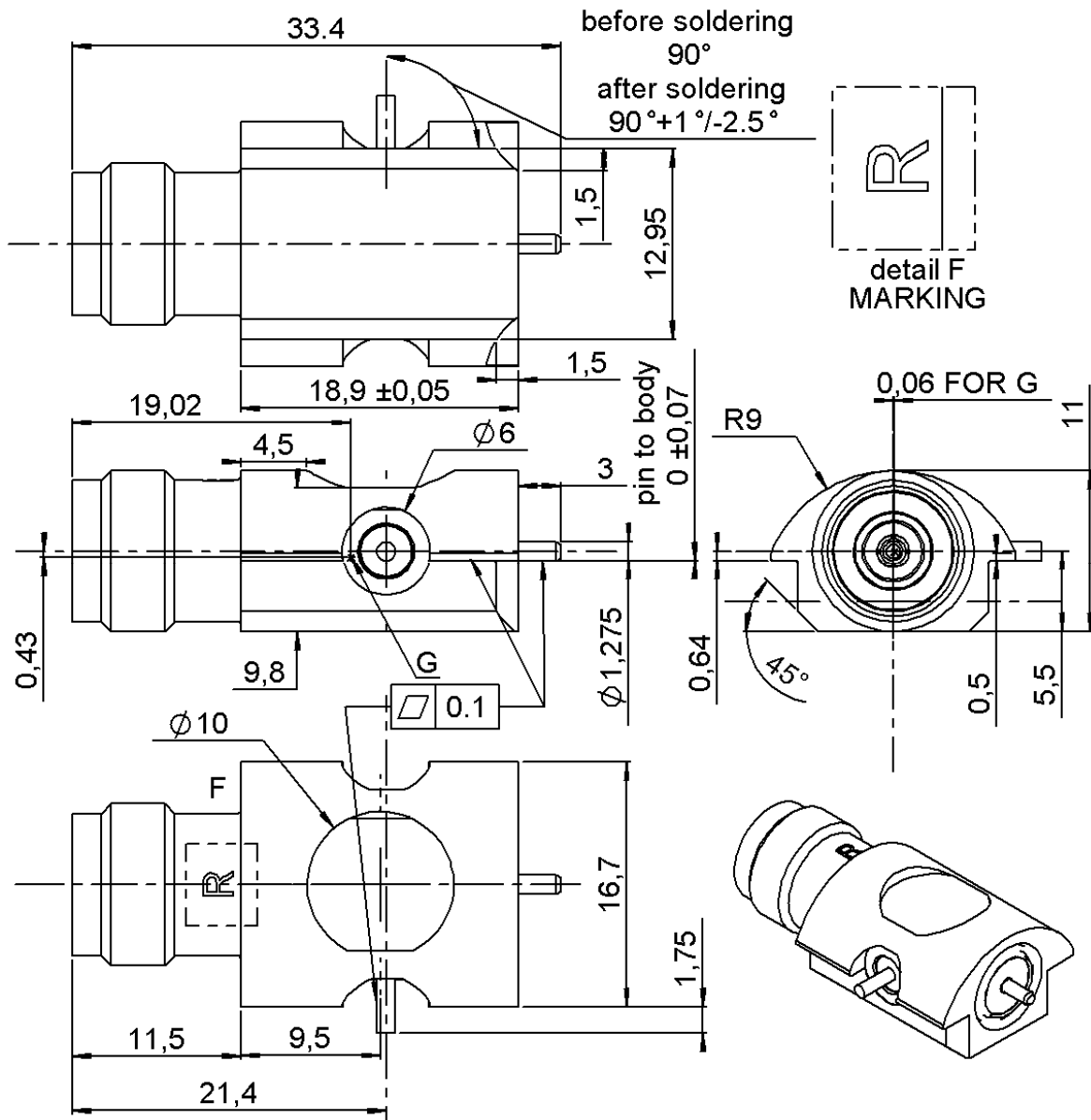


TNC SWITCH EDGE CARD SMT RIGHT TYPE

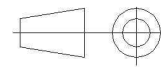
R143.422.957

PACKAGING IN REEL 110

Series : TNC



All dimensions are in mm.



| COMPONENTS | MATERIALS | PLATING (µm) |
|----------------|------------------|--------------|
| BODY | BRASS | NPGR |
| CENTER CONTACT | BERYLLIUM COPPER | NPGR |
| OUTER CONTACT | BRASS | NPGR |
| INSULATOR | PEEK | |
| GASKET | - | |
| OTHERS PARTS | BRASS | NPGR |
| - | - | - |
| - | - | - |

Issue : 0823 D

In the effort to improve our products, we reserve the right to make changes judged to be necessary.



TNC SWITCH EDGE CARD SMT RIGHT TYPE

R143.422.957

PACKAGING IN REEL 110

Series : TNC

PACKAGING

SPECIFICATION

| Standard | Unit | Other |
|------------|-------------------|-------------------|
| 110 | 'W' option | Contact us |

1301-RNT 408 4010 UEN rev C

ELECTRICAL CHARACTERISTICS

ENVIRONMENTAL

| | | |
|---------------------------------|---------------------|--------------------------|
| Impedance | 50 | Ω |
| Frequency | DC-3 | GHz |
| VSWR | 1.1 + 0,1000 | x F(GHz) Maxi |
| Isolation at DC to 1 Ghz | -47 | DB Typical |
| Isolation at 1 to 2 Ghz | -43 | DB Typical |
| Isolation at 2 to 3 Ghz | -40 | DB Typical |
| Insertion loss DC to 1 Ghz | 0.1 | \sqrt{F} (GHz) dB Maxi |
| Insertion loss 1 to 2 Ghz | 0.15 | dB Maxi |
| Insertion loss 2 to 3 Ghz | 0.2 | dB Maxi |
| RF leakage | NA | - F(GHz)) dB Maxi |
| Voltage rating | 300 | Veff Maxi |
| Dielectric withstanding voltage | 500 | Veff mini |
| Insulation resistance | 5000 | M Ω mini |
| Power withstanding | 80 | W at 0.9 Ghz |
| | 50 | W at 1.9 Ghz |

| | | |
|-----------------------|----------------|--------------|
| Operating temperature | -40/+85 | $^{\circ}$ C |
| Hermetic seal | NA | Atm.cm3/s |
| Panel leakage | NA | |

OTHERS CHARACTERISTICS

Assembly instruction

Others :
Action Mating force :
20 N MAX
15 N min

(1) Do not apply force on the center contac before
Mounting the switch on PCB

MECHANICAL CHARACTERISTICS

| | | |
|----------------------------|----------------|-------------|
| Center contact retention | | |
| Axial force – Mating end | NA | N mini |
| Axial force – Opposite end | NA | N mini |
| Torque | NA | N.cm mini |
| Axial force side pin | (1) | |
| Recommended torque | | |
| Mating | 22 | N.cm |
| Panel nut | NA | N.cm |
| Mating life | 100 | Cycles mini |
| Weight | 20,9800 | g |

Issue : 0823 D

In the effort to improve our products, we reserve the right to make changes judged to be necessary.



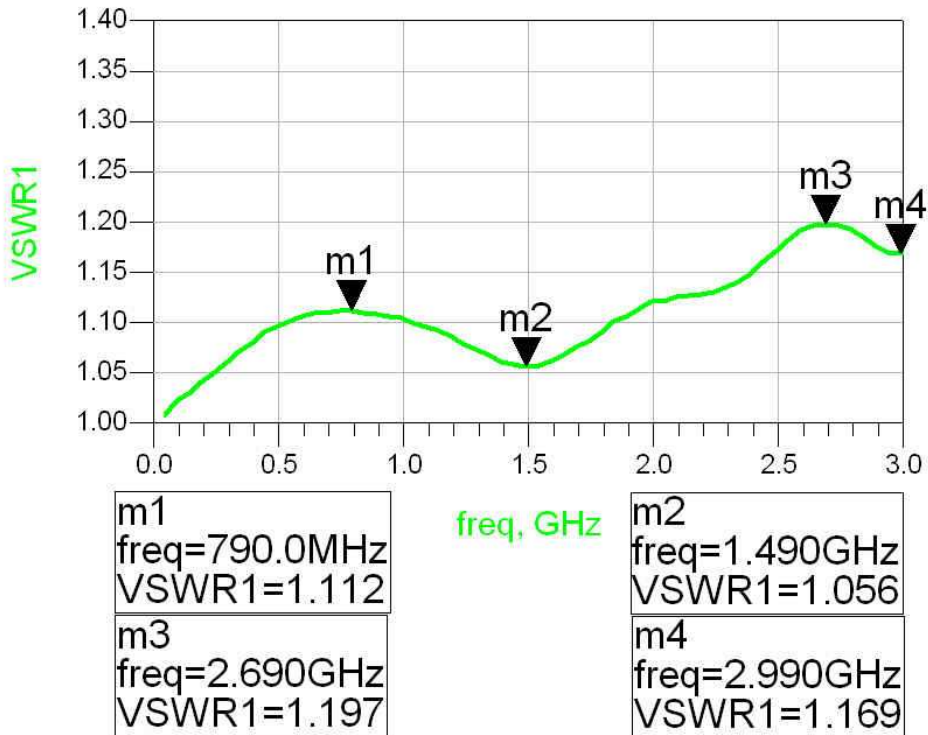
TNC SWITCH EDGE CARD SMT RIGHT TYPE

R143.422.957

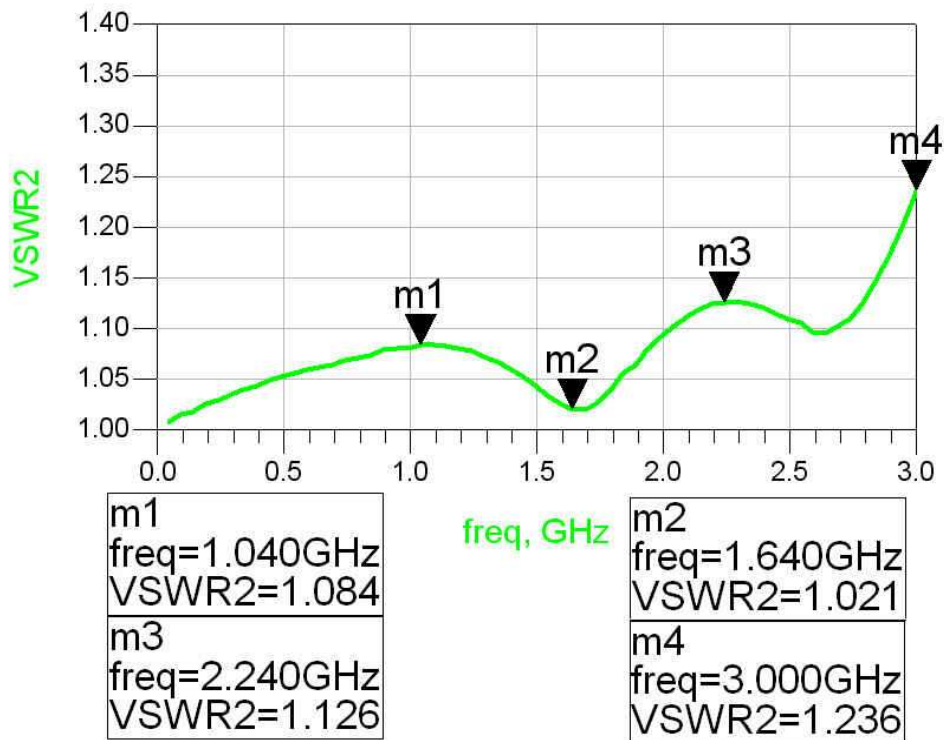
PACKAGING IN REEL 110

Series : TNC

VSWR direct line



VSWR switched line



Issue : 0823 D

In the effort to improve our products, we reserve the right to make changes judged to be necessary.



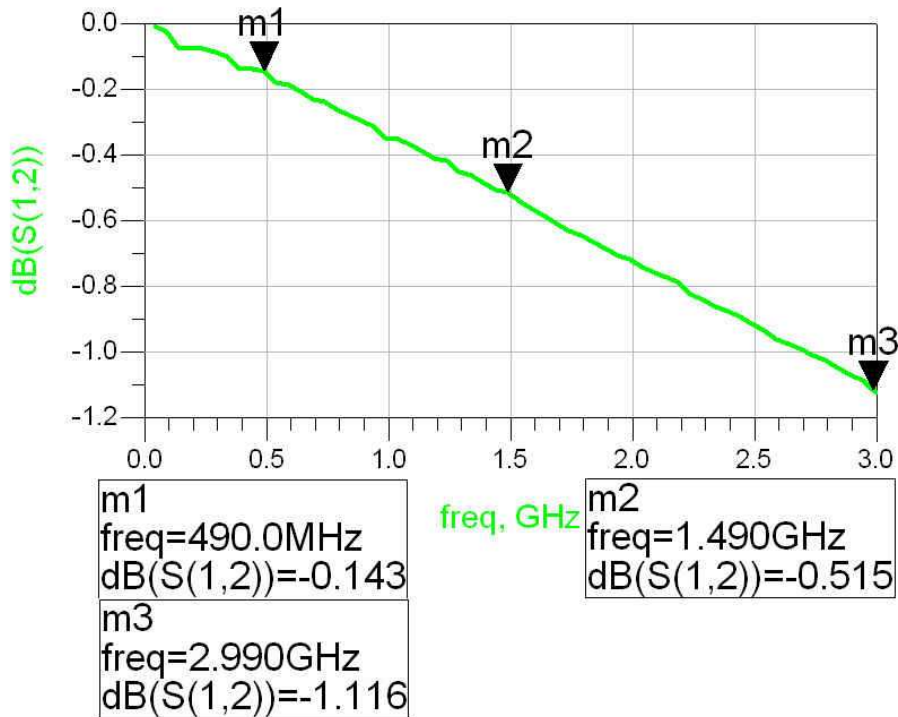
TNC SWITCH EDGE CARD SMT RIGHT TYPE

R143.422.957

PACKAGING IN REEL 110

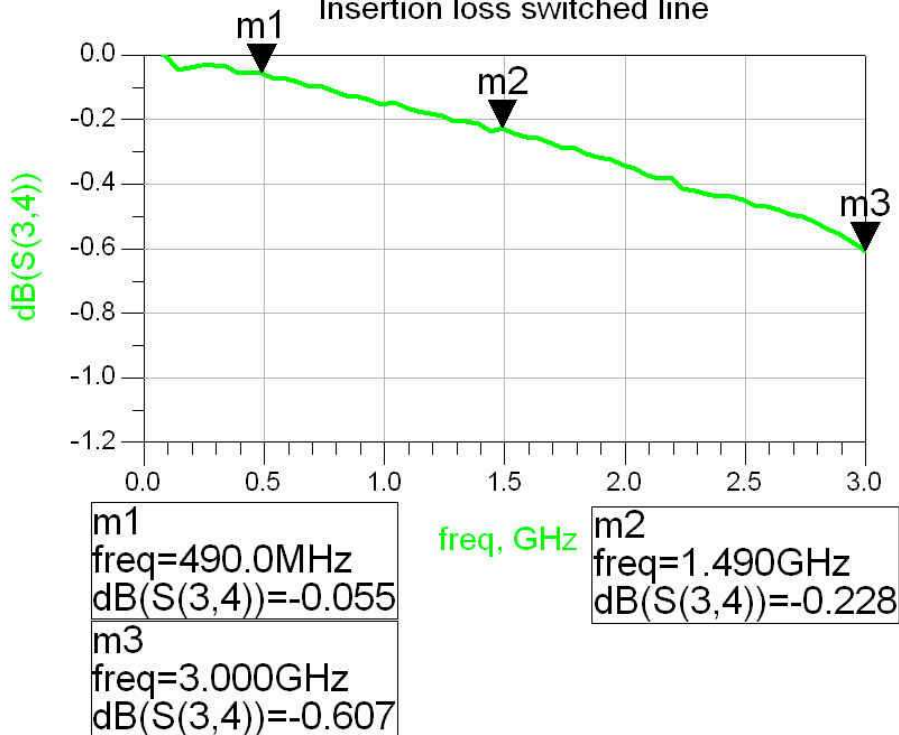
Series : TNC

Insertion loss direct line



the measurement includes the insertion loss due to the test board and connectors

Insertion loss switched line



the measurement includes the insertion loss due to the test board and connectors

Issue : 0823 D

In the effort to improve our products, we reserve the right to make changes judged to be necessary.

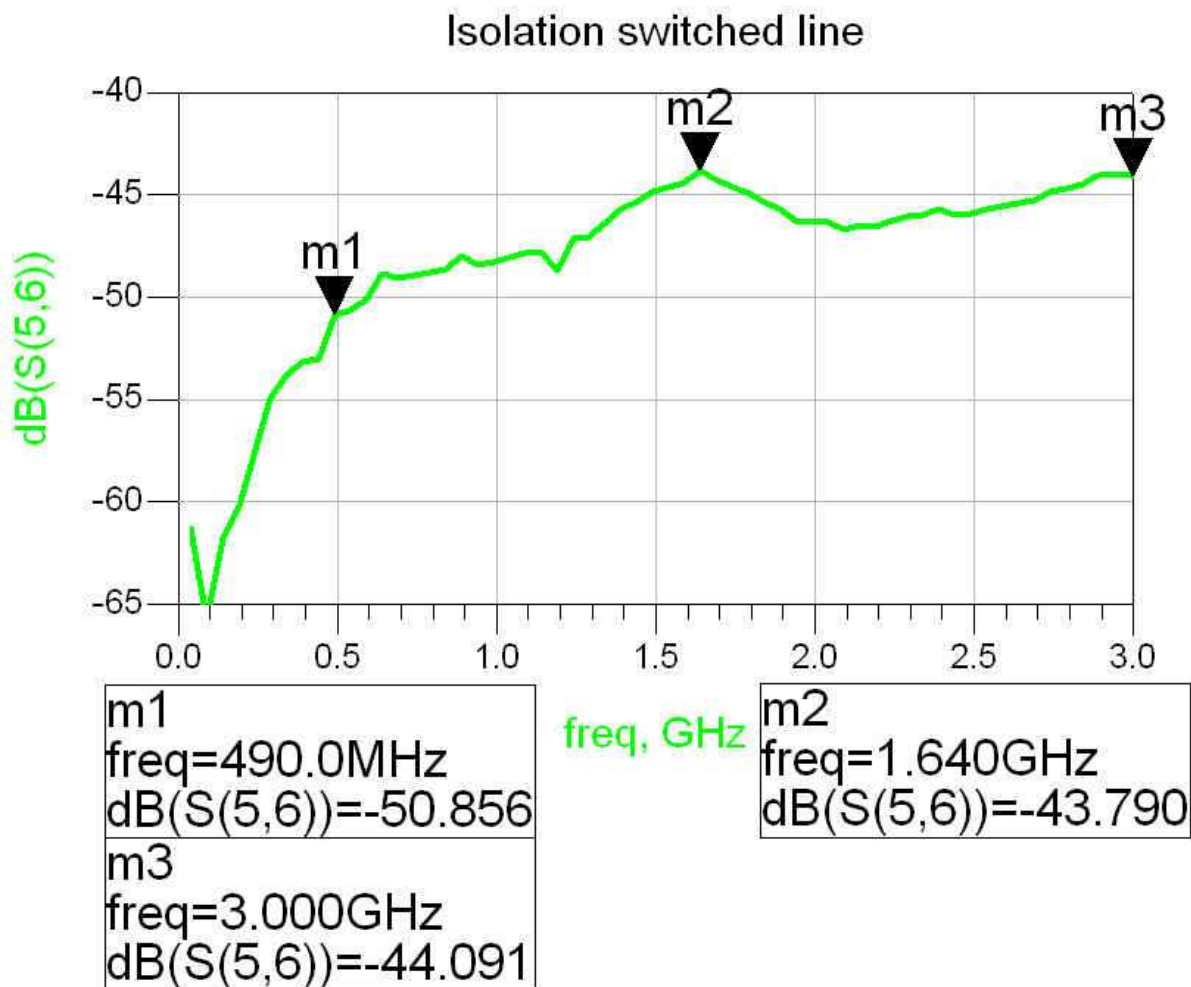


TNC SWITCH EDGE CARD SMT RIGHT TYPE

R143.422.957

PACKAGING IN REEL 110

Series : TNC



Issue : 0823 D

In the effort to improve our products, we reserve the right to make changes judged to be necessary.



TNC SWITCH EDGE CARD SMT RIGHT TYPE

R143.422.957

PACKAGING IN REEL 110

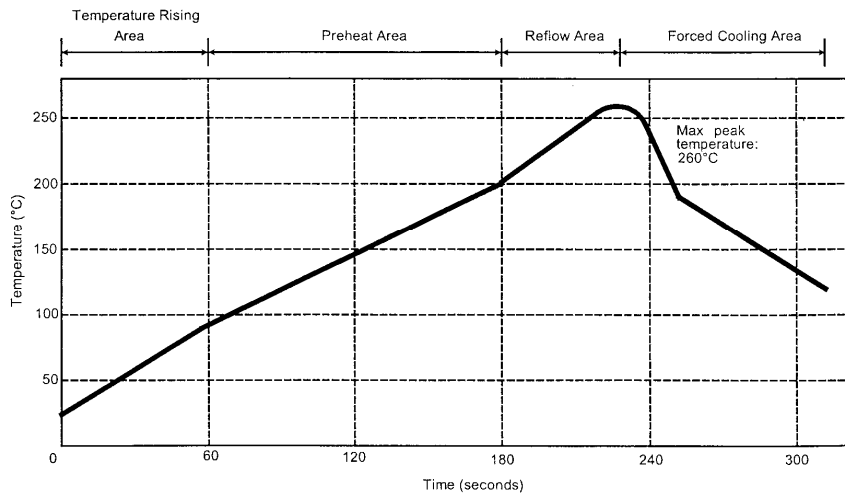
Series : TNC

SOLDER PROCEDURE

1. Deposit solder paste ‘Sn Ag4 Cu0.5’ on mounting zone by screen printing application. We recommend a low residue flux.
We advise a thickness of 150 microm (5.850 microinch). Verify that the edges of the zone are clean.
2. Placement of the receptacle on the mounting zone with an automatic machine of ‘pick and place’ type. A video camera is recommended for positioning of the component . Adhesive agents must not be used on the receptacle.
3. This process of soldering has been tested with convection oven .Below please find ,the typical profile to use.
4. The cleaning of printed circuit boards is not obliged .
5. Verification of solder joints and position of the component by visual inspection.

NOTE : The receptacle and the plug must not be mated before completion of this procedure

TEMPERATURE PROFILE



| Parameter | Value | Unit |
|----------------------------------|-----------|--------|
| Temperature rising Area | 1 - 4 | °C/sec |
| Max Peak Temperature | 260 | °C |
| Max dwell time @260°C | 10 | sec |
| Min dwell time @235°C | 20 | sec |
| Max dwell time @235°C | 60 | sec |
| Temperature drop in cooling Area | -1 to - 4 | °C/sec |
| Max dwell time above 100°C | 420 | sec |

Issue : 0823 D

In the effort to improve our products, we reserve the right to make changes judged to be necessary.



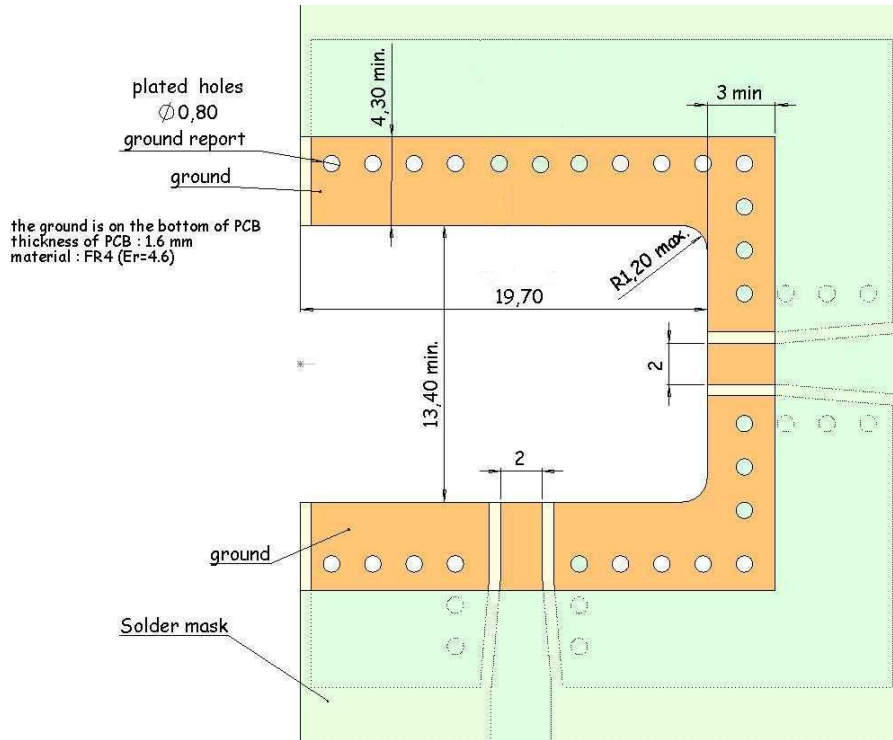
TNC SWITCH EDGE CARD SMT RIGHT TYPE

R143.422.957

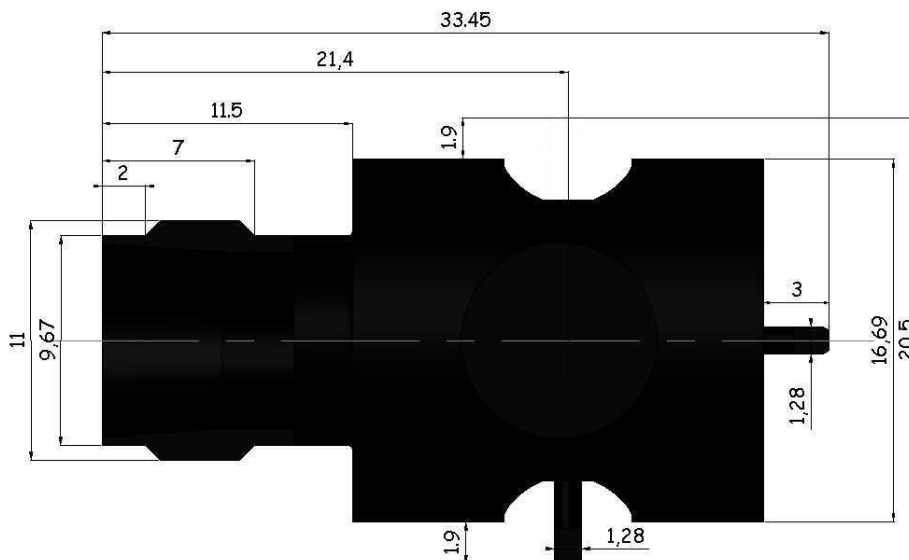
PACKAGING IN REEL 110

Series : TNC

PCB for TNC switch



Shadow of TNC switch for video camera



Issue : 0823 D

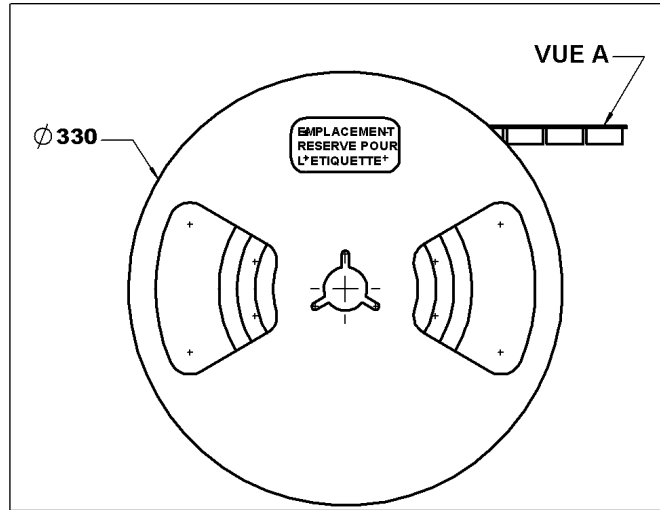
In the effort to improve our products, we reserve the right to make changes judged to be necessary.



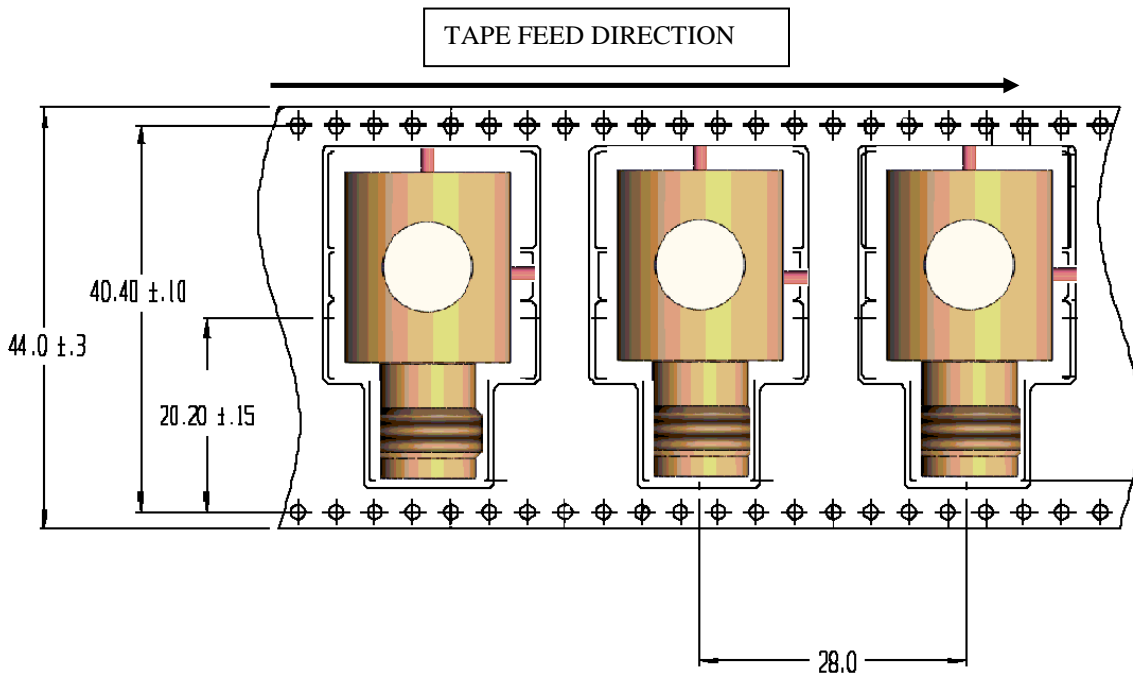
TNC SWITCH EDGE CARD SMT RIGHT TYPE
PACKAGING IN REEL 110

R143.422.957

Series : TNC



bobine Ech :0.7



Issue : 0823 D

In the effort to improve our products, we reserve the right to make changes judged to be necessary.

