

6

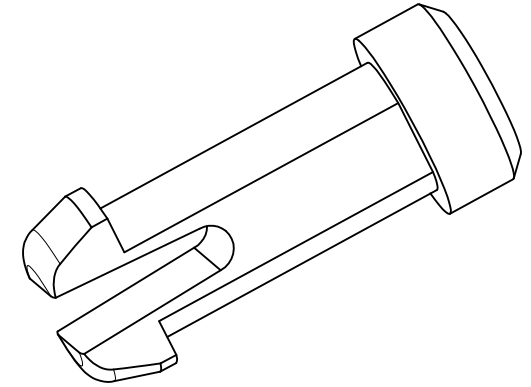
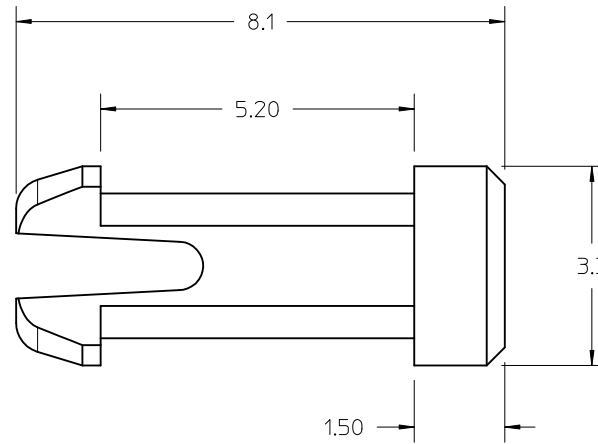
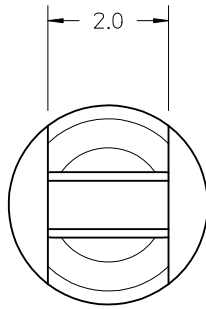
5

4

3

2

1



NOTES:

1. MATERIAL: NYLON 6/6, UL94 V-0 (RMS-19)
COLOR: NATURAL
2. FOR USE WITH MOLEX EDGELINE COEDGE SERIES 46720.
3. RIVETS RECEIVED FROM MOLEX IN INDIVIDUAL PLASTIC BAGS WITH QUANTITY 1000 PCS
4. TO REMOVE RIVET FROM ASSEMBLY USE MOLEX REMOVAL TOOL NUMBER 638133502

| | | | | | | | | | | |
|--|--------------------------------------|---------------------------------------|-----------------------------------|-----------------------------------|---|----------------------------|---|--------------------------|--|--|
| REMOVED P/N 7711 EC NO: UCP2012-0083 DRWN: TGREGORI 2011/07/14 CHKD: APPR: JCOMERCI 2011/09/13 | QUALITY SYMBOLS ▽=0 ▽=0 ▽=0 | GENERAL TOLERANCES (UNLESS SPECIFIED) | | DIMENSION STYLE MM ONLY | | SCALE 8:1 | DESIGN UNITS METRIC | THIRD ANGLE PROJECTION | | |
| | | | mm | INCH | DRAWN BY TGREGORI | DATE 2010/03/24 | TITLE SNAP LOCK PIN EDGELINE COEDGE CONNECTOR | | | |
| | | 4 PLACES | ± --- | ± --- | CHECKED BY | DATE | | | | |
| | | 3 PLACES | ± --- | ± --- | APPROVED BY JCOMERCI | | DATE 2010/04/12 | MOLEX MOLEX INCORPORATED | | |
| 2 PLACES | ± 0.13 | ± --- | MATERIAL NO. 46720-7710 | | DOCUMENT NO. SD-46720-7710 | SHEET NO. 1 OF 1 | | | | |
| 1 PLACE | ± 0.25 | ± --- | ANGULAR ±1/2° | | THIS DRAWING CONTAINS INFORMATION THAT IS PROPRIETARY TO MOLEX INCORPORATED AND SHOULD NOT BE USED WITHOUT WRITTEN PERMISSION | | | | | |
| DRAFT WHERE APPLICABLE MUST REMAIN WITHIN DIMENSIONS | | | | | | | | | | |

5

4

3

2

1