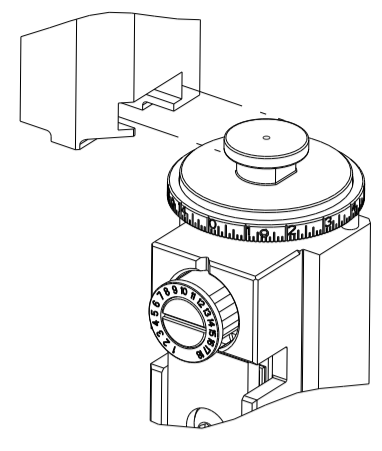


| PART NUMBER | REVISION | DESCRIPTION | FEED TYPE |
|-------------|----------|----------------------------------|------------|
| 2150191-1 | F | FINE CRIMP HEIGHT ADJUST | MECHANICAL |
| 2150191-2 | F | FINE CRIMP HEIGHT ADJUST | PNEUMATIC |
| 7-2150191-1 | F | MECHANICAL AND CRIMP TOOLING KIT | MECHANICAL |
| 7-2150191-2 | F | PNEUMATIC AND CRIMP TOOLING KIT | PNEUMATIC |
| 7-2150191-7 | A | CRIMP TOOLING KIT | - |

ATLANTIC VERSION TERMINATOR INTERFACE ADAPTER



| APPLICATOR DATA | | |
|--------------------------------|----------------|------|
| CRIMP | SIZE | TYPE |
| WIRE | 2.79 mm [.110] | F |
| INSUL | 3.56 mm [.140] | OV |
| APPL INSTRUCTIONS 408-35043 | | |

| TERMINAL DATA: TE TERMINAL | | TE CRIMP SPECIFICATION | |
|---|-------------|------------------------------|-------------|
| TERMINAL NAME: .250 SRS FAST-IN-ON RECEPTACLE | | | |
| WIRE STRIP LENGTH | | INSULATION DIAMETER RANGE | |
| 5.80-6.60 mm [.228-.260 IN] | | ∅2.10-3.10 mm [.083-.122 IN] | |
| TERMINAL APPLICATION SPECIFICATION | 114-2025 | | |
| TERMINALS APPLIED | | | |
| TE TERMINAL | TE TERMINAL | TE TERMINAL | TE TERMINAL |
| 160927-1 | 160927-2 | 160927-3 | 160927-4 |

| WIRE SIZE | CRIMP HEIGHT mm [INCH] | CRIMP HEIGHT REFERENCE SETTING |
|-----------|----------------------------|--------------------------------|
| 2.50mm2 | 1.77+/-0.05 [.070+/- .002] | 3.9 |
| 2.00mm2 | 1.64+/-0.05 [.065+/- .002] | 5.2 |
| 1.50mm2 | 1.51+/-0.05 [.059+/- .002] | 6.7 |
| 1.00mm2 | 1.42+/-0.05 [.056+/- .002] | 7.5 |

- RECOMMENDED SPARE PARTS
- REFER TO SUPPLIED INSTRUCTION SHEET FOR CLEANING, LUBRICATION AND STORAGE OF APPLICATOR.
- APPLY PART NUMBER 2-23419-6 LOCTITE TO THREADS OF ITEM 242. APPLY PART NUMBER 1-23419-5 LOCTITE TO THREADS OF ITEM 50.
- CRIMP HEIGHT REFERENCE SETTING WAS THE SETTING USED WHEN THE APPLICATOR WAS QUALIFIED AT THE FACTORY. ADJUSTMENT MAY BE NECESSARY WHEN RUNNING APPLICATOR IN THE FIELD.
- TERMINAL LUBRICANT IS RECOMMENDED.
- 6. UNLESS SPECIFIED OTHERWISE TORQUE VALUES SHALL BE USED PER DOCUMENT, 101-35000.

***WARNING**
ON INSTALLATION, SET WIRE DISC TO CRIMP HEIGHT REFERENCE SETTING FOR LARGEST WIRE SIZE. CRIMP HEIGHT REFERENCE SETTINGS GREATER THAN THE VALUE SHOWN MAY CAUSE DAMAGE TO THE CRIMP TOOLING. REFER TO THE INSTRUCTION SHEET FOR PROPER SETUP AND ADJUSTMENTS.

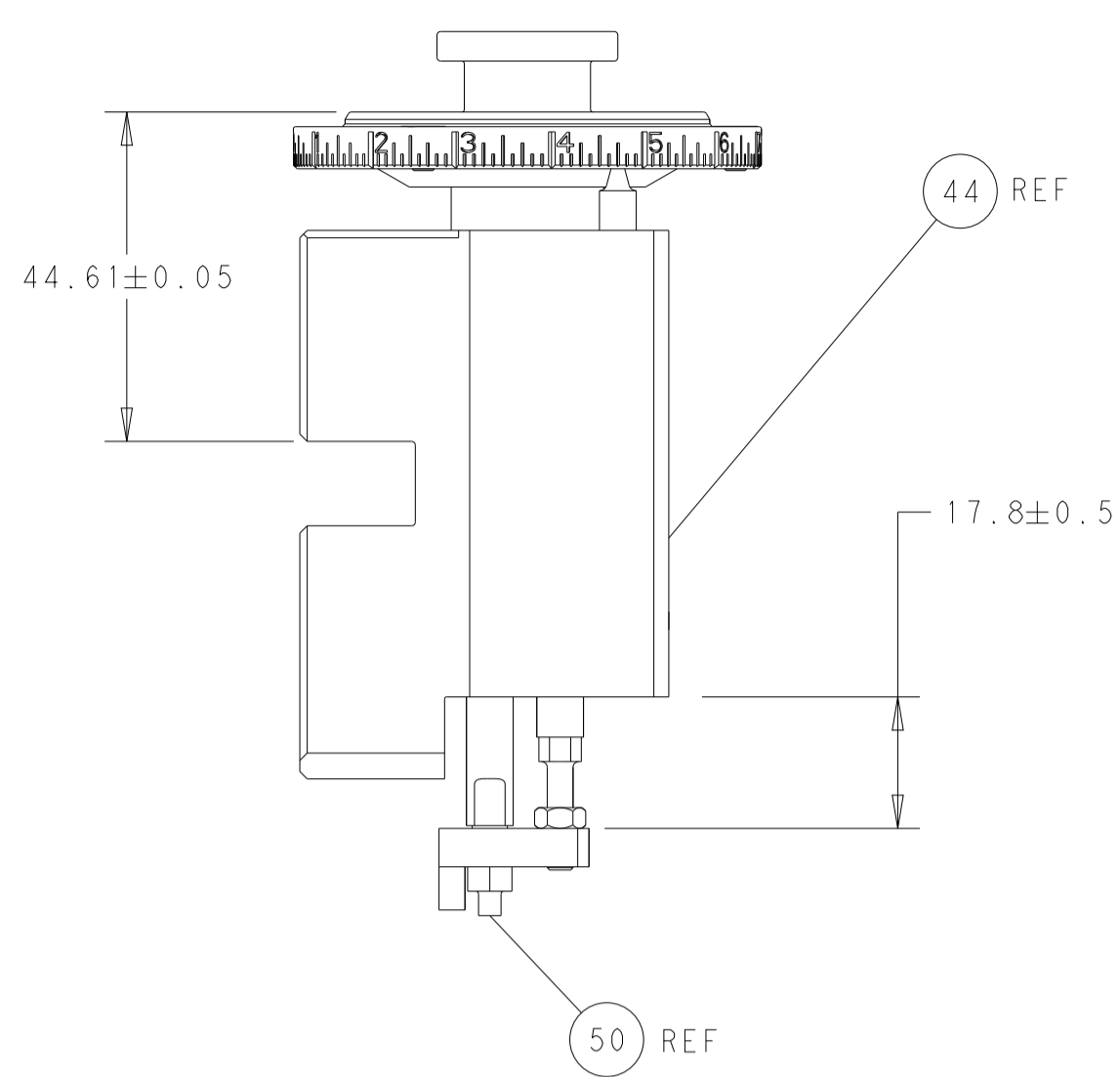
ATLANTIC VERSION
Shown on sheets 1 of 4 & 2 of 4
(Pacific version shown on sheets 3 of 4 & 4 of 4)

| LOC | DIST | REVISIONS | | | | | |
|-----|------|-----------|-----|---------------|-----------|-----|------|
| A | 66 | P | LTN | DESCRIPTION | DATE | OWN | APVD |
| | | C | | ECR-17-009263 | 26JUN2017 | TB | TE |
| | | D | | ECR-18-015451 | 28SEP2018 | TB | TE |
| | | E | | ECR-21-002654 | 02MAR2021 | JAH | RK |
| | | F | | ECR-23-164961 | 31JAN2023 | FZ | TE |

| | | | | | | | |
|---|---------------|-----|-----|-----|-------------|-------------------------------------|---------|
| - | 1 | - | 1 | - | 2119641-1 | FEED CAM, AIR FEED | 248 |
| - | 1 | 1 | 1 | 1 | 2119082-9 | CAM, SNAIL, INSULATION ADJUSTMENT | 244 |
| - | 1 | 1 | 1 | 1 | 2079764-1 | WASHER, WAVE SPRING, CREST-TO-CREST | 243 |
| | - | 1 | 1 | 1 | 2119083-1 | RETAINER, INSULATION DIAL | 242 |
| - | - | 1 | - | 1 | 2119580-1 | MECHANICAL FEED ASSEMBLY | 239 |
| - | 1 | - | 1 | - | 2844940-3 | AIR FEED MODULE | 238 |
| - | 1 | 1 | 1 | 1 | 1-18028-0 | WASHER, FLAT, REG M8 | 192 |
| - | 1 | 1 | 1 | 1 | 6-993111-6 | PIN, SLOTTED SPRING 3.0 X 14.0 | 177 |
| - | 1 | 1 | 1 | 1 | 8-22280-7 | SPRING, COMPRESSION | 176 |
| - | 1 | 1 | 1 | 1 | 1752353-2 | GUIDE PIN,HOLDDOWN | 175 |
| - | 1 | 1 | 1 | 1 | 1901680-2 | GUIDE PIN,HOLDDOWN | 174 |
| - | REF | REF | REF | REF | 994970-2 | COUNTER, MAGNETIC | 164 |
| | - | 1 | 1 | 1 | 2119955-2 | ASSY, LUBRICATOR, END FEED | 84 |
| - | 1 | 1 | 1 | 1 | 455888-4 | SPACER, CRIMPER | 82 |
| - | 1 | 1 | 1 | 1 | 1803607-4 | DOCUMENTATION PACKAGE | 71 |
| - | 2 | 2 | 2 | 2 | 2-18032-2 | SCR, SET, FLT PNT, M3 X 10.0 | 70 |
| - | 1 | 1 | 1 | 1 | 2119740-1 | TAG, IDENTIFICATION | 67 |
| - | 2 | 2 | 2 | 2 | 2168078-1 | SCREW, DRIVE, RH, RoHS, 2 x .188 | 66 |
| - | 1 | 1 | 1 | 1 | 1901681-5 | HOLDDOWN, TERMINAL | 65 |
| - | 2 | 2 | 2 | 2 | 2168400-5 | SHCS, LOW HEAD, RoHS, M4 X 20 | 64 |
| - | 1 | 1 | 1 | 1 | 2168083-2 | SCR, SKT HD CAP, RoHS, M4 X 8.0 | 60 |
| - | 1 | 1 | 1 | 1 | 5-18022-5 | SCR, HEX HD CAP, M4 X 6.0 | 59 |
| - | - | 1 | - | 1 | 2063961-1 | FEED FINGER | 58 |
| - | 3 | 3 | 3 | 3 | 2168400-4 | SHCS, LOW HEAD, RoHS, M4 X 8 | 57 |
| - | 2 | 2 | 2 | 2 | 1-2168083-0 | SCR, SKT HD CAP, RoHS, M4 X 10 | 56 |
| - | 2 | 2 | 2 | 2 | 5018030-1 | NUT, HEX, REG, RoHS, M3 | 54 |
| - | 2 | 2 | 2 | 2 | 986965-8 | NUT, LOCK, HEX, TORQUE (M4) | 53 |
| - | 1 | 1 | 1 | 1 | 1-5018030-0 | NUT, HEX, REG, RoHS, M3.5 | 52 |
| - | 1 | - | 1 | - | 2063961-1 | FEED FINGER | 51 |
| | - | 1 | 1 | 1 | 1-1976055-1 | STANDOFF, HOLD-DOWN | 50 |
| - | 1 | 2 | 1 | 2 | 18023-9 | SCR, SKT HD CAP M4 X 6.0 | 49 |
| - | - | 1 | - | 1 | 2119652-1 | FEED CAM, PRE FEED | 48 |
| - | - | 1 | - | 1 | 2119653-1 | FEED CAM, POST FEED | 47 |
| - | 1 | 1 | 1 | 1 | 2119655-5 | APPLICATOR BASIC ASSEMBLY, EF | 46 |
| - | 1 | 1 | 1 | 1 | 1803517-1 | RAM ASSEMBLY, EF ATLANTIC | 44 |
| - | 1 | 1 | 1 | 1 | 1803602-1 | SCR, BHSC, RoHS (M8 X 25) | 41 |
| - | 7 | 7 | 7 | 7 | 1-18028-2 | WASHER, FLAT, REG M4 | 33 |
| - | 2 | 2 | 2 | 2 | 2168083-9 | SCR, SKT HD CAP, RoHS, M4 X 20 | 31 |
| - | 2 | 2 | 2 | 2 | 2168083-2 | SCR, SKT HD CAP, RoHS, M4 X 8.0 | 29 |
| - | 1 | 1 | 1 | 1 | 240639-1 | STRIPPER (MACHINING) | 27 |
| - | 2 | 2 | 2 | 2 | 1-2168083-5 | SCR, SKT HD CAP, RoHS, M4 X 30 | 25 |
| - | 1 | 1 | 1 | 1 | 1752371-3 | PLATE, STRIP GUIDE | 24 |
| - | 1 | 1 | 1 | 1 | 240825-1 | PLATE, STRIP HOLD DOWN | 23 |
| - | 2 | 2 | 2 | 2 | 2-22281-3 | SPRING, COMPRESSION | 22 |
| - | 1 | 1 | 1 | 1 | 1803292-4 | DRAG | 20 |
| - | 2 | 2 | 2 | 2 | 1901259-5 | GUIDE, LOWER STRIP | 18 |
| - | 4 | 4 | 4 | 4 | 1-2079383-1 | SCR, BHSC, RoHS (M6 X 12) | 17 |
| - | 1 | 1 | 1 | 1 | 1752360-1 | SPACER,HOLD-DOWN | 13 |
| | - | 1 | 1 | 1 | 240644-1 | PLATE, REAR SHEAR | 11 |
| - | - | - | - | - | - | - | 10 |
| | - | 1 | 1 | 1 | 690482-3 | PLATE, FRONT SHEAR | 9 |
| | 1 | 2 | 2 | 1 | 1333219-6 | ANVIL, COMBINATION | 8 |
| | - | 1 | 1 | 1 | 1-2217206-3 | BLADE, SLUG | 7 |
| - | - | - | - | - | - | - | 6 |
| - | 1 | 1 | 1 | 1 | 1-240641-2 | SPACER | 5 |
| - | 1 | 1 | 1 | 1 | 238011-2 | BLOCK, CRIMPER SPACER | 4 |
| | 1 | 2 | 2 | 1 | 3-2119785-3 | CRIMPER, INSULATION OVERLAP PREMIUM | 3 |
| - | 1 | 1 | 1 | 1 | 455888-7 | SPACER, CRIMPER | 2 |
| | 1 | 2 | 2 | 1 | 5-730251-9 | CRIMPER, WIRE | 1 |
| | -77-72-71-2-1 | | | | PART NO | DESCRIPTION | ITEM NO |

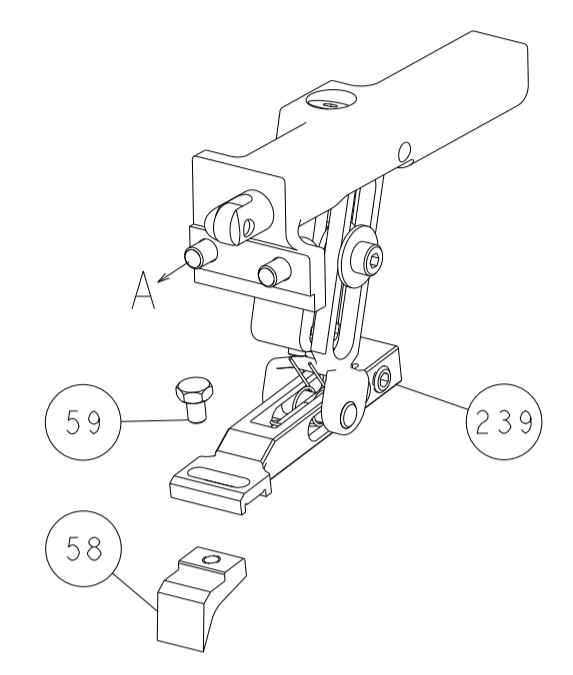
| DIMENSIONS: | | TOLERANCES UNLESS OTHERWISE SPECIFIED: | | OWN | | TE Connectivity | |
|-------------|-----------|--|-----------|-----------|--------|---------------------------|--|
| mm | 0 PLC ± | 1 PLC ± | 2 PLC ± | 11JUN2013 | OFFNER | Harrisburg, PA 17105-3608 | |
| | 3 PLC ± | 4 PLC ± | 5 PLC ± | 12JUN2013 | ELBIN | | |
| | 6 PLC ± | 7 PLC ± | 8 PLC ± | 12JUN2013 | ELBIN | | |
| | 9 PLC ± | 10 PLC ± | 11 PLC ± | | | | |
| | 12 PLC ± | 13 PLC ± | 14 PLC ± | | | | |
| | 15 PLC ± | 16 PLC ± | 17 PLC ± | | | | |
| | 18 PLC ± | 19 PLC ± | 20 PLC ± | | | | |
| | 21 PLC ± | 22 PLC ± | 23 PLC ± | | | | |
| | 24 PLC ± | 25 PLC ± | 26 PLC ± | | | | |
| | 27 PLC ± | 28 PLC ± | 29 PLC ± | | | | |
| | 30 PLC ± | 31 PLC ± | 32 PLC ± | | | | |
| | 33 PLC ± | 34 PLC ± | 35 PLC ± | | | | |
| | 36 PLC ± | 37 PLC ± | 38 PLC ± | | | | |
| | 39 PLC ± | 40 PLC ± | 41 PLC ± | | | | |
| | 42 PLC ± | 43 PLC ± | 44 PLC ± | | | | |
| | 45 PLC ± | 46 PLC ± | 47 PLC ± | | | | |
| | 48 PLC ± | 49 PLC ± | 50 PLC ± | | | | |
| | 51 PLC ± | 52 PLC ± | 53 PLC ± | | | | |
| | 54 PLC ± | 55 PLC ± | 56 PLC ± | | | | |
| | 57 PLC ± | 58 PLC ± | 59 PLC ± | | | | |
| | 60 PLC ± | 61 PLC ± | 62 PLC ± | | | | |
| | 63 PLC ± | 64 PLC ± | 65 PLC ± | | | | |
| | 66 PLC ± | 67 PLC ± | 68 PLC ± | | | | |
| | 69 PLC ± | 70 PLC ± | 71 PLC ± | | | | |
| | 72 PLC ± | 73 PLC ± | 74 PLC ± | | | | |
| | 75 PLC ± | 76 PLC ± | 77 PLC ± | | | | |
| | 78 PLC ± | 79 PLC ± | 80 PLC ± | | | | |
| | 81 PLC ± | 82 PLC ± | 83 PLC ± | | | | |
| | 84 PLC ± | 85 PLC ± | 86 PLC ± | | | | |
| | 87 PLC ± | 88 PLC ± | 89 PLC ± | | | | |
| | 90 PLC ± | 91 PLC ± | 92 PLC ± | | | | |
| | 93 PLC ± | 94 PLC ± | 95 PLC ± | | | | |
| | 96 PLC ± | 97 PLC ± | 98 PLC ± | | | | |
| | 99 PLC ± | 100 PLC ± | 101 PLC ± | | | | |
| | 102 PLC ± | 103 PLC ± | 104 PLC ± | | | | |
| | 105 PLC ± | 106 PLC ± | 107 PLC ± | | | | |
| | 108 PLC ± | 109 PLC ± | 110 PLC ± | | | | |
| | 111 PLC ± | 112 PLC ± | 113 PLC ± | | | | |
| | 114 PLC ± | 115 PLC ± | 116 PLC ± | | | | |
| | 117 PLC ± | 118 PLC ± | 119 PLC ± | | | | |
| | 120 PLC ± | 121 PLC ± | 122 PLC ± | | | | |
| | 123 PLC ± | 124 PLC ± | 125 PLC ± | | | | |
| | 126 PLC ± | 127 PLC ± | 128 PLC ± | | | | |
| | 129 PLC ± | 130 PLC ± | 131 PLC ± | | | | |
| | 132 PLC ± | 133 PLC ± | 134 PLC ± | | | | |
| | 135 PLC ± | 136 PLC ± | 137 PLC ± | | | | |
| | 138 PLC ± | 139 PLC ± | 140 PLC ± | | | | |
| | 141 PLC ± | 142 PLC ± | 143 PLC ± | | | | |
| | 144 PLC ± | 145 PLC ± | 146 PLC ± | | | | |
| | 147 PLC ± | 148 PLC ± | 149 PLC ± | | | | |
| | 150 PLC ± | 151 PLC ± | 152 PLC ± | | | | |
| | 153 PLC ± | 154 PLC ± | 155 PLC ± | | | | |
| | 156 PLC ± | 157 PLC ± | 158 PLC ± | | | | |
| | 159 PLC ± | 160 PLC ± | 161 PLC ± | | | | |
| | 162 PLC ± | 163 PLC ± | 164 PLC ± | | | | |
| | 165 PLC ± | 166 PLC ± | 167 PLC ± | | | | |
| | 168 PLC ± | 169 PLC ± | 170 PLC ± | | | | |
| | 171 PLC ± | 172 PLC ± | 173 PLC ± | | | | |
| | 174 PLC ± | 175 PLC ± | 176 PLC ± | | | | |
| | 177 PLC ± | 178 PLC ± | 179 PLC ± | | | | |
| | 180 PLC ± | 181 PLC ± | 182 PLC ± | | | | |
| | 183 PLC ± | 184 PLC ± | 185 PLC ± | | | | |
| | 186 PLC ± | 187 PLC ± | 188 PLC ± | | | | |
| | 189 PLC ± | 190 PLC ± | 191 PLC ± | | | | |
| | 192 PLC ± | 193 PLC ± | 194 PLC ± | | | | |
| | 195 PLC ± | 196 PLC ± | 197 PLC ± | | | | |
| | 198 PLC ± | 199 PLC ± | 200 PLC ± | | | | |
| | 201 PLC ± | 202 PLC ± | 203 PLC ± | | | | |
| | 204 PLC ± | 205 PLC ± | 206 PLC ± | | | | |
| | 207 PLC ± | 208 PLC ± | 209 PLC ± | | | | |
| | 210 PLC ± | 211 PLC ± | 212 PLC ± | | | | |
| | 213 PLC ± | 214 PLC ± | 215 PLC ± | | | | |
| | 216 PLC ± | 217 PLC ± | 218 PLC ± | | | | |
| | 219 PLC ± | 220 PLC ± | 221 PLC ± | | | | |
| | 222 PLC ± | 223 PLC ± | 224 PLC ± | | | | |
| | 225 PLC ± | 226 PLC ± | 227 PLC ± | | | | |
| | 228 PLC ± | 229 PLC ± | 230 PLC ± | | | | |
| | 231 PLC ± | 232 PLC ± | 233 PLC ± | | | | |
| | 234 PLC ± | 235 PLC ± | 236 PLC ± | | | | |
| | 237 PLC ± | 238 PLC ± | 239 PLC ± | | | | |
| | 240 PLC ± | 241 PLC ± | 242 PLC ± | | | | |
| | 243 PLC ± | 244 PLC ± | 245 PLC ± | | | | |
| | 246 PLC ± | 247 PLC ± | 248 PLC ± | | | | |
| | 249 PLC ± | 250 PLC ± | 251 PLC ± | | | | |
| | 252 PLC ± | 253 PLC ± | 254 PLC ± | | | | |
| | 255 PLC ± | 256 PLC ± | 257 PLC ± | | | | |
| | 258 PLC ± | 259 PLC ± | 260 PLC ± | | | | |
| | 261 PLC ± | 262 PLC ± | 263 PLC ± | | | | |
| | 264 PLC ± | 265 PLC ± | 266 PLC ± | | | | |
| | 267 PLC ± | 268 PLC ± | 269 PLC ± | | | | |
| | 270 PLC ± | 271 PLC ± | 272 PLC ± | | | | |
| | 273 PLC ± | 274 PLC ± | 275 PLC ± | | | | |
| | 276 PLC ± | 277 PLC ± | 278 PLC ± | | | | |

| LOC | DIST | REVISIONS | | | |
|-----|------|-------------|------|-----|------|
| P | LTN | DESCRIPTION | DATE | OWN | APVD |
| A | 66 | SEE SHEET 1 | | | |

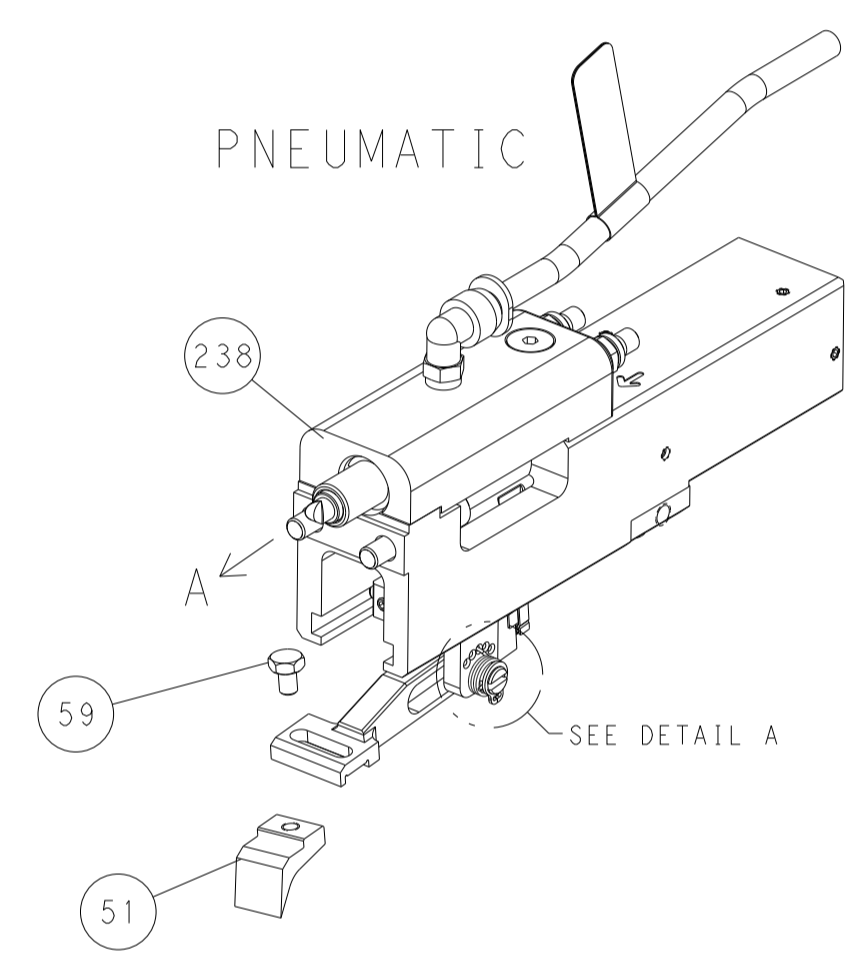


RAM AND HOLDDOWN SET-UP

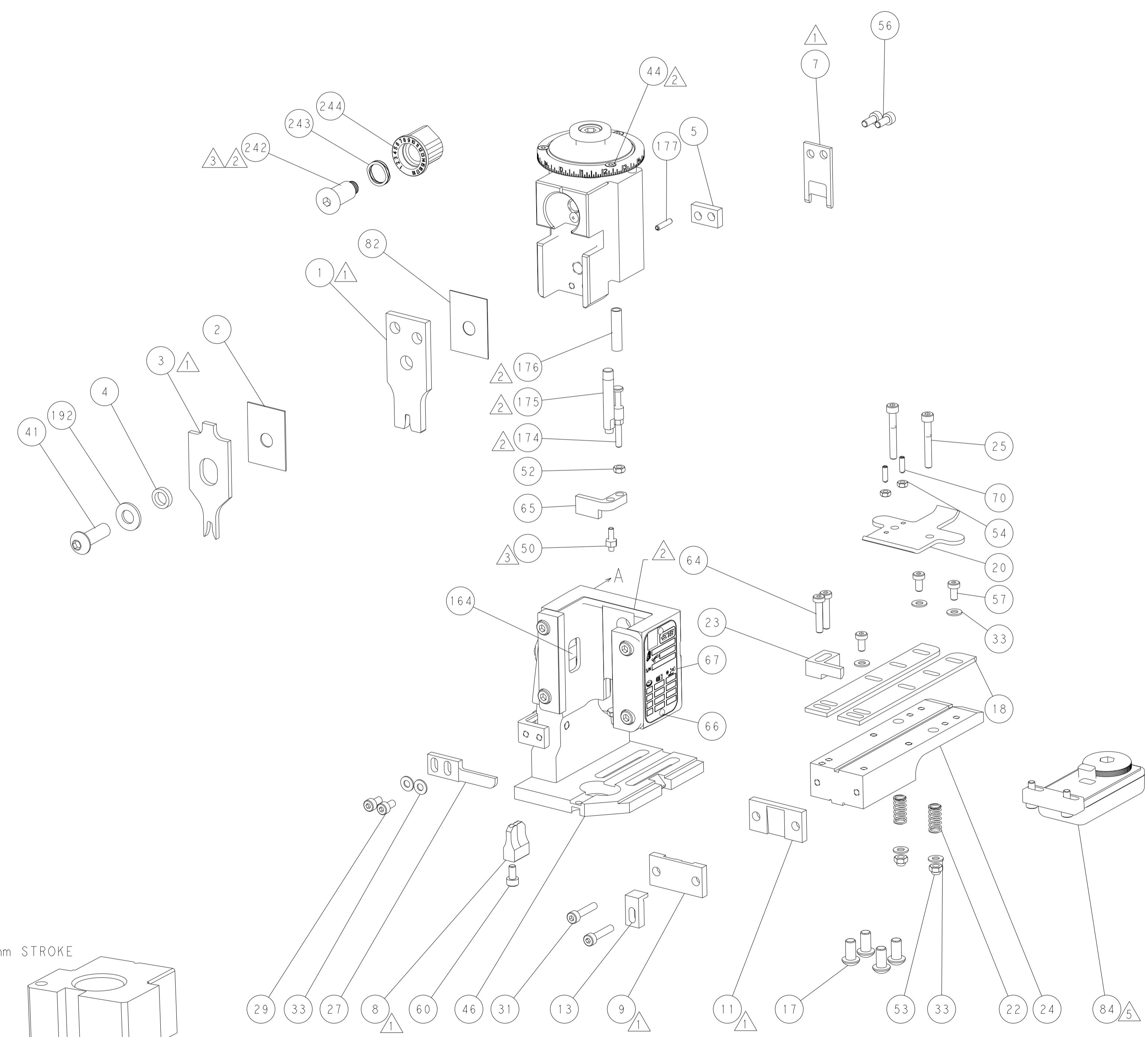
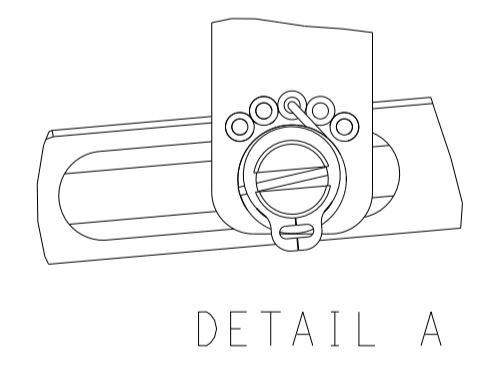
FEED TYPE
MECHANICAL



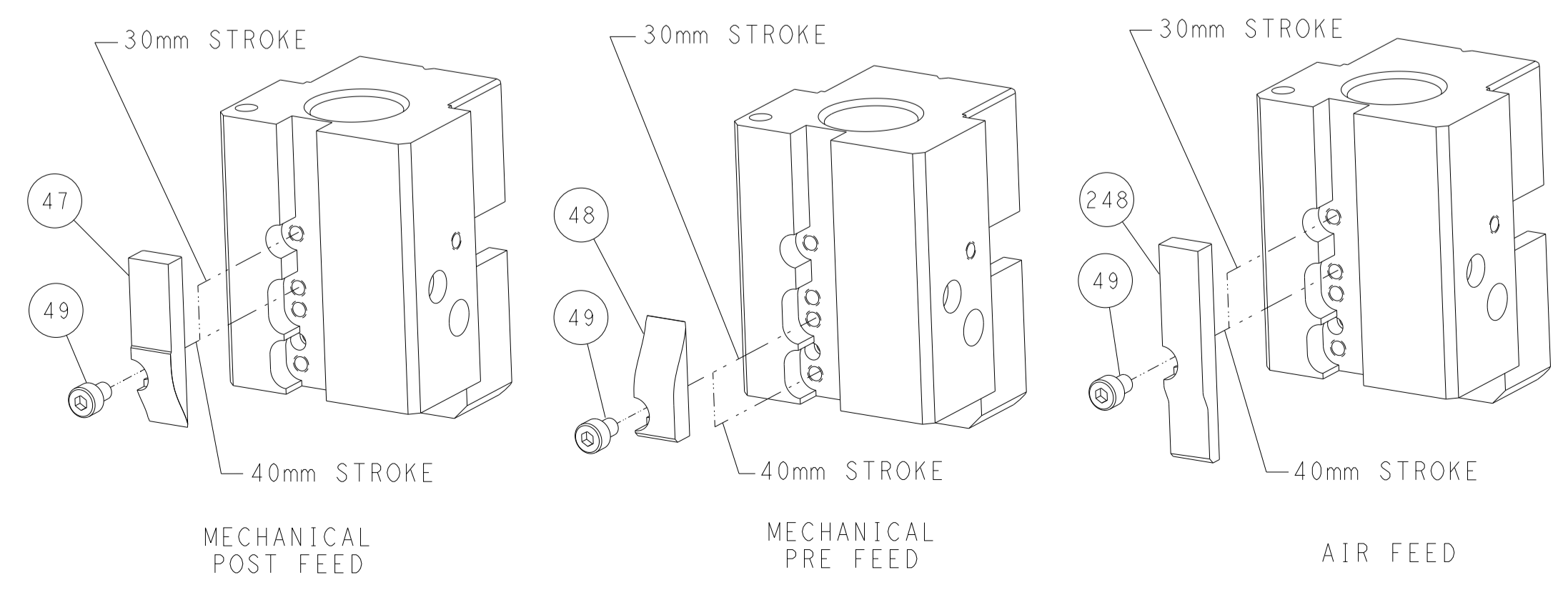
PNEUMATIC



FEED SPRING
SETTING POSITION



CAM POSITIONS

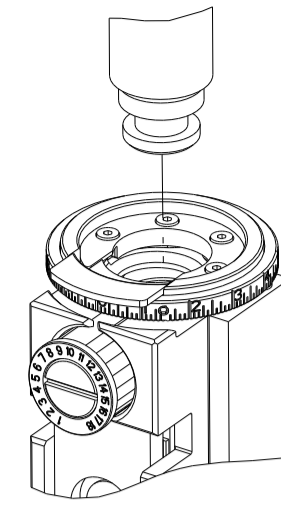


ATLANTIC VERSION
 Shown on sheets 1 of 4 & 2 of 4
 (Pacific version shown on sheets 3 of 4 & 4 of 4)

| | | | |
|---|--|---|---|
| <small>THIS DRAWING IS A CONTROLLED DOCUMENT FROM TYCO ELECTRONICS CORPORATION. IT IS THE PROPERTY OF TYCO ELECTRONICS CORPORATION AND IS NOT TO BE REPRODUCED OR TRANSMITTED IN ANY FORM OR BY ANY MEANS, ELECTRONIC OR MECHANICAL, INCLUDING PHOTOCOPYING, RECORDING, OR BY ANY INFORMATION STORAGE AND RETRIEVAL SYSTEM, WITHOUT THE WRITTEN PERMISSION OF TYCO ELECTRONICS CORPORATION.</small> | | OWN: HOFFNER 11JUN2013 CHK: T. ELBIN 12JUN2013 APVD: T. ELBIN 12JUN2013 | TE Connectivity Harrisburg, PA 17105-3608 |
| DIMENSIONS: mm | | TOLERANCES UNLESS OTHERWISE SPECIFIED: 0 PLC ± 1 PLC ± 2 PLC ± 3 PLC ± 4 PLC ± ANGLES ± FINISH | NAME: Ocean End Feed Applicator SIZE: A1 CAGE CODE: 00779 DRAWING NO: 2150191 SCALE: 1:1 SHEET: 2 of 4 REV: F |
| MATERIAL: | | WEIGHT: | RESTRICTED TO: |

| THIS DRAWING IS UNPUBLISHED. | RELEASED FOR PUBLICATION | 20 | |
|---|--------------------------|--------------------------|------------|
| COPYRIGHT © BY TYCO ELECTRONICS CORPORATION. ALL RIGHTS RESERVED. | | | |
| PART NUMBER | REVISION | DESCRIPTION | FEED TYPE |
| 2-2150191-1 | F | FINE CRIMP HEIGHT ADJUST | MECHANICAL |
| 2-2150191-2 | F | FINE CRIMP HEIGHT ADJUST | PNEUMATIC |
| 7-2150191-7 | A | CRIMP TOOLING KIT | - |

PACIFIC VERSION TERMINATOR INTERFACE ADAPTER



| APPLICATOR DATA | | |
|--------------------------------|------------------|------|
| CRIMP | SIZE | TYPE |
| WIRE | 2.79 mm [.110] | F |
| INSUL | 3.56 mm [.140] | OV |
| APPL INSTRUCTIONS 408-35043 | | |

| | | | |
|--|-------------|---|-------------|
| TERMINAL DATA: TE TERMINAL | | TE CRIMP SPECIFICATION | |
| TERMINAL NAME: .250 SRS FAST-IN-ON RECEPTACLE | | | |
| WIRE STRIP LENGTH 5.80-6.60 mm [.228-.260 IN] | | INSULATION DIAMETER RANGE Ø2.10-3.10 mm [.083-.122 IN] | |
| TERMINAL APPLICATION SPECIFICATION | 114-2025 | - | - |
| TERMINALS APPLIED | | | |
| TE TERMINAL | TE TERMINAL | TE TERMINAL | TE TERMINAL |
| 160927-1 | 160927-2 | 160927-3 | 160927-4 |

| WIRE SIZE | CRIMP HEIGHT mm [INCH] | CRIMP HEIGHT REFERENCE SETTING |
|-----------|------------------------------|--------------------------------|
| 2.50mm2 | 1.77+/-0.05 [.070+/- .002] | 3.9 |
| 2.00mm2 | 1.64+/-0.05 [.065+/- .002] | 5.2 |
| 1.50mm2 | 1.51+/-0.05 [.059+/- .002] | 6.7 |
| 1.00mm2 | 1.42+/-0.05 [.056+/- .002] | 7.5 |



- 1 RECOMMENDED SPARE PARTS
- 2 REFER TO SUPPLIED INSTRUCTION SHEET FOR CLEANING, LUBRICATION AND STORAGE OF APPLICATOR.
- 3 APPLY PART NUMBER 2-23419-6 LOCTITE TO THREADS OF ITEM 242. APPLY PART NUMBER 1-23419-5 LOCTITE TO THREADS OF ITEM 50.
- 4 CRIMP HEIGHT REFERENCE SETTING WAS THE SETTING USED WHEN THE APPLICATOR WAS QUALIFIED AT THE FACTORY. ADJUSTMENT MAY BE NECESSARY WHEN RUNNING APPLICATOR IN THE FIELD.
- 5 TERMINAL LUBRICANT IS RECOMMENDED.
- 6. UNLESS SPECIFIED OTHERWISE TORQUE VALUES SHALL BE USED PER DOCUMENT, 101-35000.

***WARNING**
ON INSTALLATION, SET WIRE DISC TO CRIMP HEIGHT REFERENCE SETTING FOR LARGEST WIRE SIZE. CRIMP HEIGHT REFERENCE SETTINGS GREATER THAN THE VALUE SHOWN MAY CAUSE DAMAGE TO THE CRIMP TOOLING. REFER TO THE INSTRUCTION SHEET FOR PROPER SETUP AND ADJUSTMENTS.

PACIFIC VERSION
Shown on sheets 3 of 4 & 4 of 4
(Atlantic version shown on sheets 1 of 4 & 2 of 4)

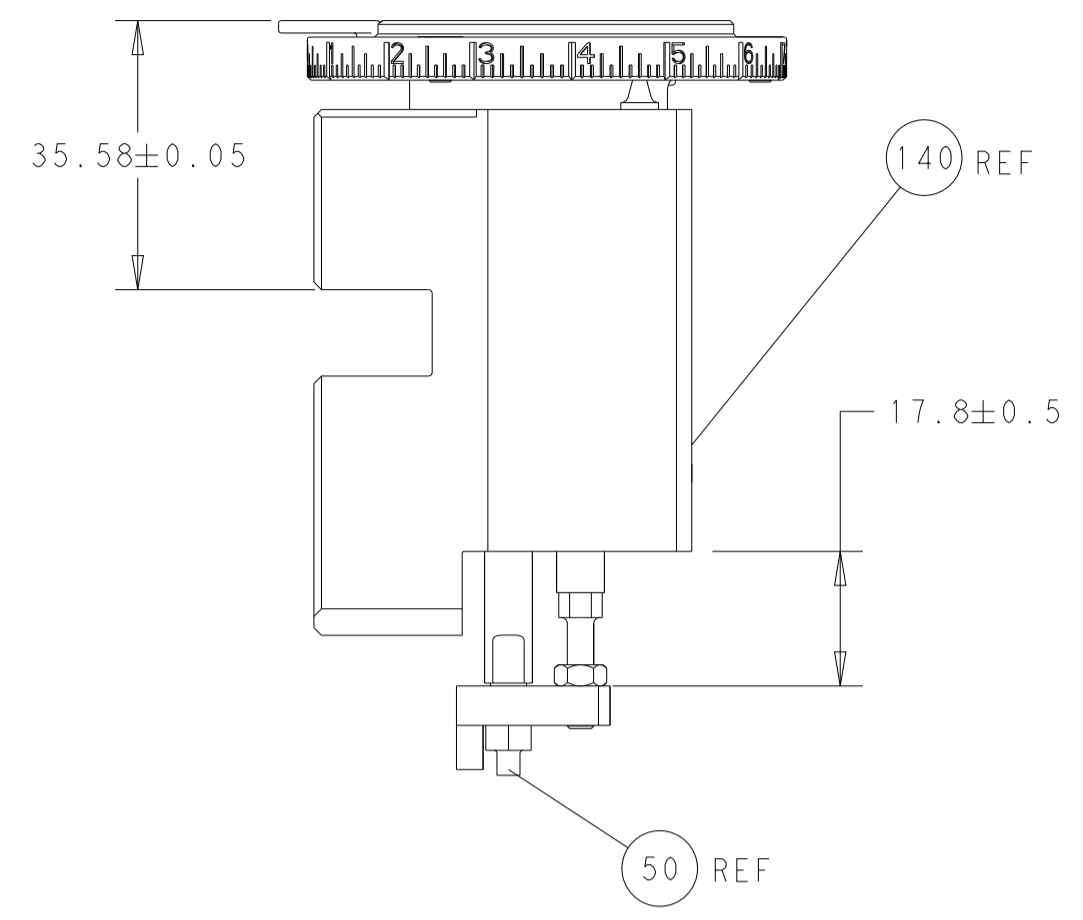
| LOC | DIST | REVISIONS | | | | | |
|-----|------|-----------|-----|-------------|------|-----|------|
| A | 66 | P | LTN | DESCRIPTION | DATE | OWN | APVD |
| - | - | - | - | SEE SHEET 1 | - | - | - |

| | | | | | |
|---|-----|-----|-------------|-------------------------------------|---------|
| - | 1 | 1 | 2119082-9 | CAM, SNAIL, INSULATION ADJUSTMENT | 244 |
| - | 1 | 1 | 2079764-1 | WASHER, WAVE SPRING, CREST-TO-CREST | 243 |
| - | 1 | 1 | 2119083-1 | RETAINER, INSULATION DIAL | 242 |
| - | - | 1 | 2119580-1 | MECHANICAL FEED ASSEMBLY | 239 |
| - | 1 | - | 2844940-3 | AIR FEED MODULE | 238 |
| - | 1 | 1 | 1-18028-0 | WASHER, FLAT, REG M8 | 192 |
| - | 4 | 4 | 2079383-9 | SCR, BHSC, RoHS (M6 X 20) | 186 |
| - | 1 | 1 | 6-993111-6 | PIN, SLOTTED SPRING 3.0 X 14.0 | 177 |
| - | 1 | 1 | 8-22280-7 | SPRING, COMPRESSION | 176 |
| - | 1 | 1 | 1752353-2 | GUIDE PIN,HOLDDOWN | 175 |
| - | 1 | 1 | 1901680-2 | GUIDE PIN,HOLDDOWN | 174 |
| - | REF | REF | 994970-2 | COUNTER, MAGNETIC | 164 |
| - | 1 | - | 2119641-2 | FEED CAM, AIR FEED | 152 |
| - | 1 | 1 | 2168083-8 | SCR, SKT HD CAP, RoHS, M4 X 16 | 144 |
| - | - | 1 | 2119653-2 | FEED CAM, POST FEED | 142 |
| - | 1 | 1 | 2119655-6 | APPLICATOR BASIC ASSEMBLY, EF | 141 |
| - | 1 | 1 | 1803518-1 | RAM ASSEMBLY, EF PACIFIC | 140 |
| - | 1 | 1 | 2119955-2 | ASSY, LUBRICATOR, END FEED | 84 |
| - | 1 | 1 | 455888-4 | SPACER, CRIMPER | 82 |
| - | 1 | 1 | 1803607-4 | DOCUMENTATION PACKAGE | 71 |
| - | 2 | 2 | 2-18032-2 | SCR, SET, FLT PNT, M3 X 10.0 | 70 |
| - | 1 | 1 | 2119740-1 | TAG, IDENTIFICATION | 67 |
| - | 2 | 2 | 2168078-1 | SCREW, DRIVE, RH, RoHS, 2 x .188 | 66 |
| - | 1 | 1 | 1901681-5 | HOLDDOWN, TERMINAL | 65 |
| - | 2 | 2 | 2168400-5 | SHCS, LOW HEAD, RoHS, M4 X 20 | 64 |
| - | 1 | 1 | 5-18022-5 | SCR, HEX HD CAP, M4 X 6.0 | 59 |
| - | - | 1 | 2063961-1 | FEED FINGER | 58 |
| - | 3 | 3 | 2168400-4 | SHCS, LOW HEAD, RoHS, M4 X 8 | 57 |
| - | 2 | 2 | 1-2168083-0 | SCR, SKT HD CAP, RoHS, M4 X 10 | 56 |
| - | 2 | 2 | 5018030-1 | NUT, HEX, REG, RoHS, M3 | 54 |
| - | 2 | 2 | 986965-8 | NUT, LOCK, HEX, TORQUE (M4) | 53 |
| - | 1 | 1 | 1-5018030-0 | NUT, HEX, REG, RoHS, M3.5 | 52 |
| - | 1 | - | 2063961-1 | FEED FINGER | 51 |
| - | 1 | 1 | 1-1976055-1 | STANDOFF, HOLD-DOWN | 50 |
| - | 1 | 2 | 18023-9 | SCR, SKT HD CAP M4 X 6.0 | 49 |
| - | - | 1 | 2119652-1 | FEED CAM, PRE FEED | 48 |
| - | 1 | 1 | 1803602-1 | SCR, BHSC, RoHS (M8 X 25) | 41 |
| - | 7 | 7 | 1-18028-2 | WASHER, FLAT, REG M4 | 33 |
| - | 2 | 2 | 2168083-9 | SCR, SKT HD CAP, RoHS, M4 X 20 | 31 |
| - | 2 | 2 | 2168083-2 | SCR, SKT HD CAP, RoHS, M4 X 8.0 | 29 |
| - | 1 | 1 | 240639-1 | STRIPPER (MACHINING) | 27 |
| - | 2 | 2 | 1-2168083-5 | SCR, SKT HD CAP, RoHS, M4 X 30 | 25 |
| - | 1 | 1 | 1752371-3 | PLATE, STRIP GUIDE | 24 |
| - | 1 | 1 | 240825-1 | PLATE, STRIP HOLD DOWN | 23 |
| - | 2 | 2 | 2-22281-3 | SPRING, COMPRESSION | 22 |
| - | 1 | 1 | 1803292-4 | DRAG | 20 |
| - | 2 | 2 | 1901259-5 | GUIDE, LOWER STRIP | 18 |
| - | 1 | 1 | 1752360-1 | SPACER,HOLD-DOWN | 13 |
| - | 1 | 1 | 240644-1 | PLATE, REAR SHEAR | 11 |
| - | - | - | - | - | 10 |
| - | 1 | 1 | 690482-3 | PLATE, FRONT SHEAR | 9 |
| 1 | 1 | 1 | 1333219-6 | ANVIL, COMBINATION | 8 |
| 1 | 1 | 1 | 1-2217206-3 | BLADE, SLUG | 7 |
| - | - | - | - | - | 6 |
| - | 1 | 1 | 1-240641-2 | SPACER | 5 |
| - | 1 | 1 | 238011-2 | BLOCK, CRIMPER SPACER | 4 |
| 1 | 1 | 1 | 3-2119785-3 | CRIMPER, INSULATION OVERLAP PREMIUM | 3 |
| - | 1 | 1 | 455888-7 | SPACER, CRIMPER | 2 |
| 1 | 1 | 1 | 5-730251-9 | CRIMPER, WIRE | 1 |
| - | 77 | 22 | 21 | PART NO | ITEM NO |

| | | | | | |
|--|--|---|--|---|---------------------------------|
| DIMENSIONS: mm | | TOLERANCES UNLESS OTHERWISE SPECIFIED: 0 PLC ± 1 PLC ± 2 PLC ± 3 PLC ± 4 PLC ± ANGLES ± FINISH | | OWN: HOFFNER 11JUN2013 CHK: T. ELBIN 12JUN2013 APVD: T. ELBIN 12JUN2013 | NAME: Ocean End Feed Applicator |
| MATERIAL: - | | WEIGHT: - | | SIZE: A1 | CAGE CODE: 00779 |
| Customer Accessible Production Drawing | | SCALE: 1:1 | | SHEET 3 OF 4 | |

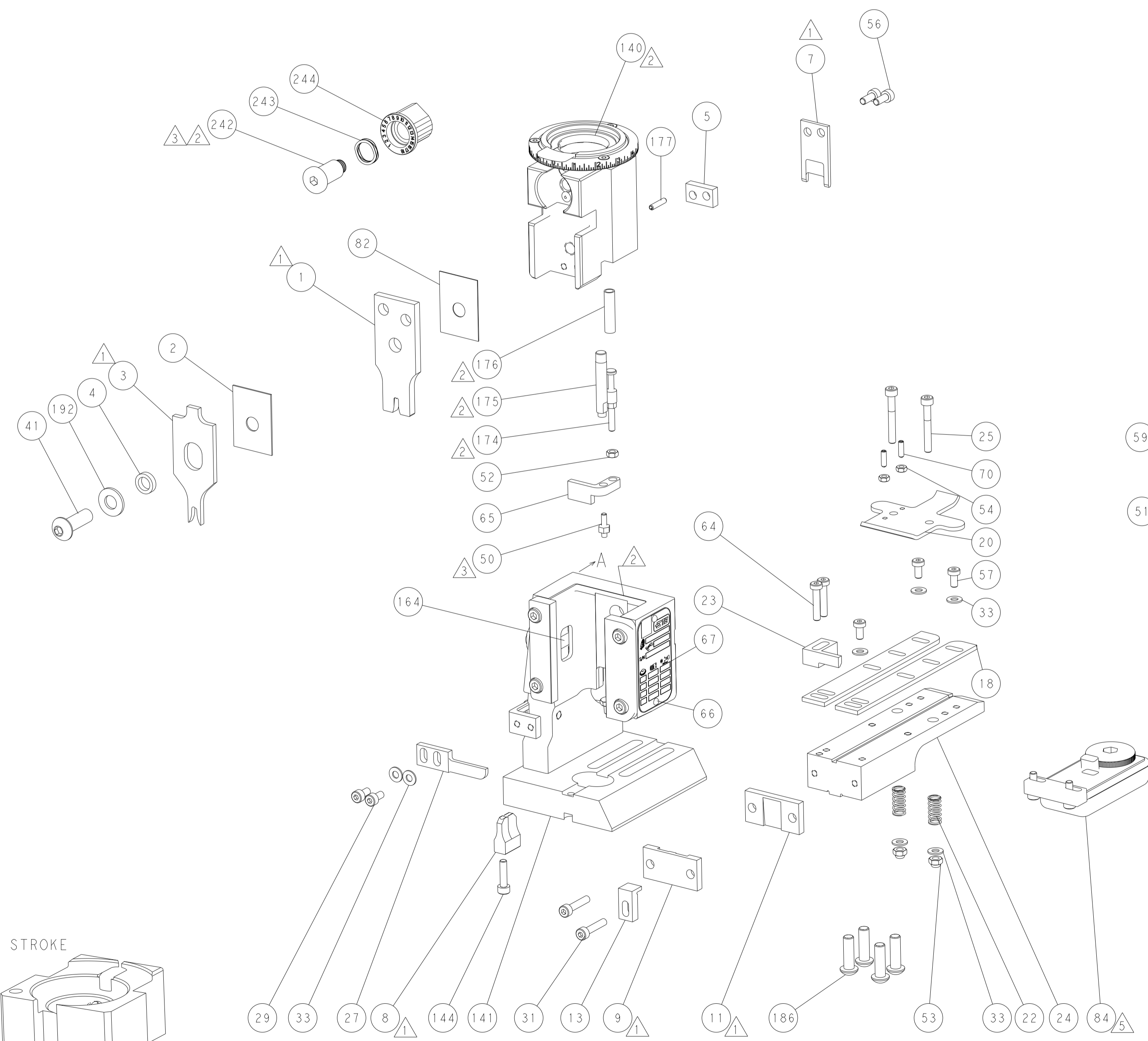
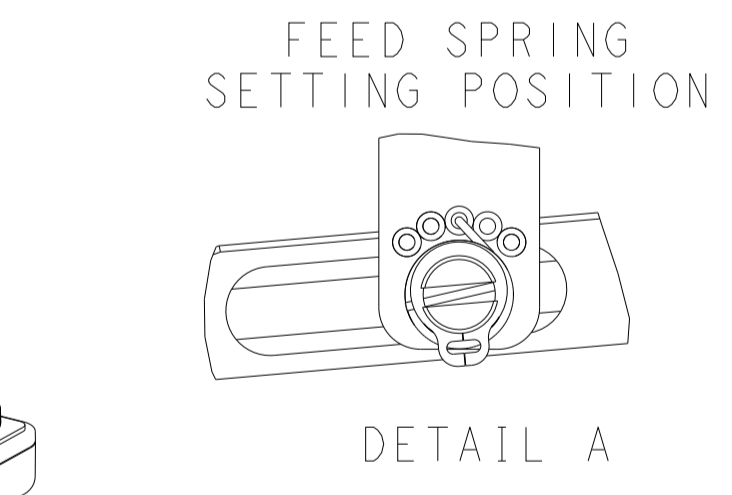
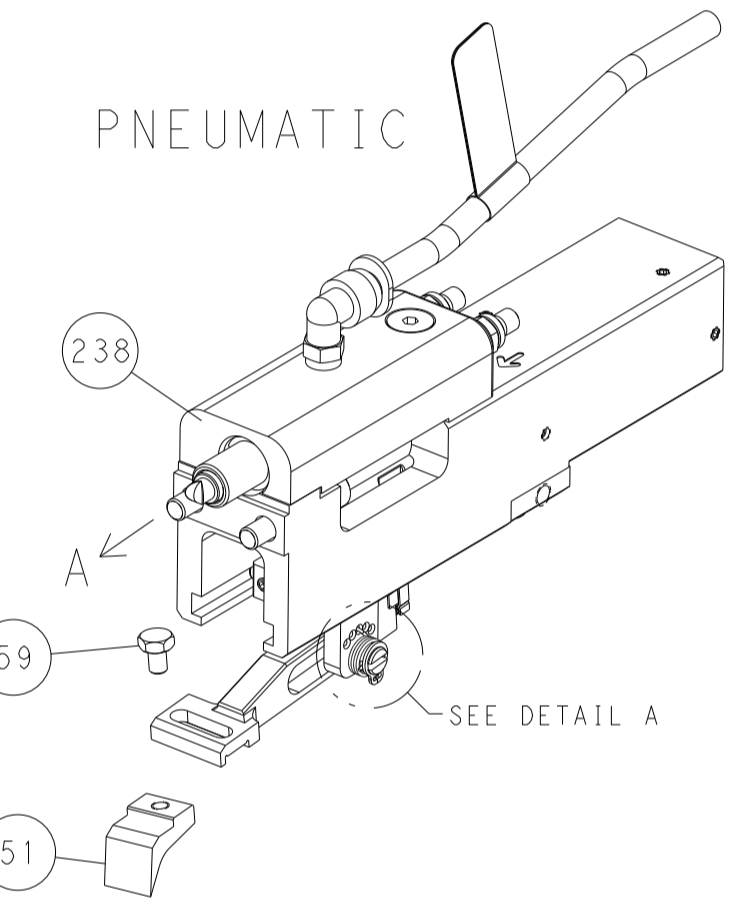
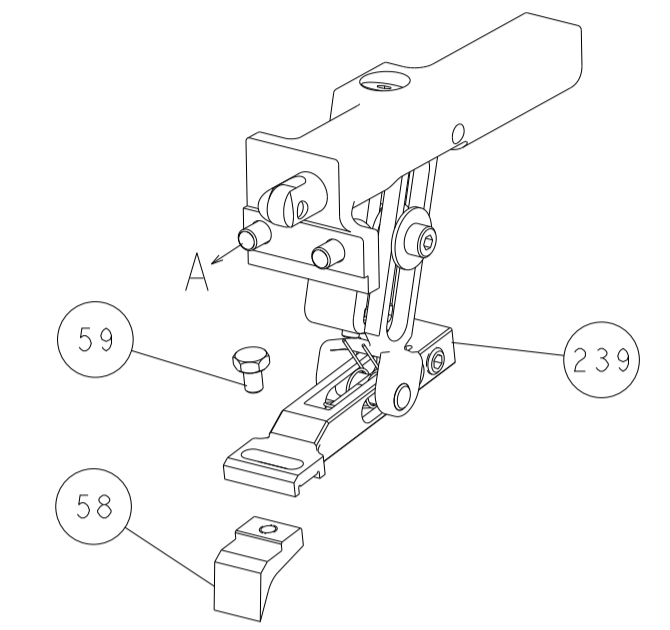
SHEETS 1 & 2 ARE NOT REQUIRED FOR PACIFIC VERSION

| LOC | | DIST | | REVISIONS | | | |
|-----|----|------|-----|-------------|------|-----|------|
| A | 66 | P | LTM | DESCRIPTION | DATE | OWN | APVD |
| | | - | | SEE SHEET 1 | | | |

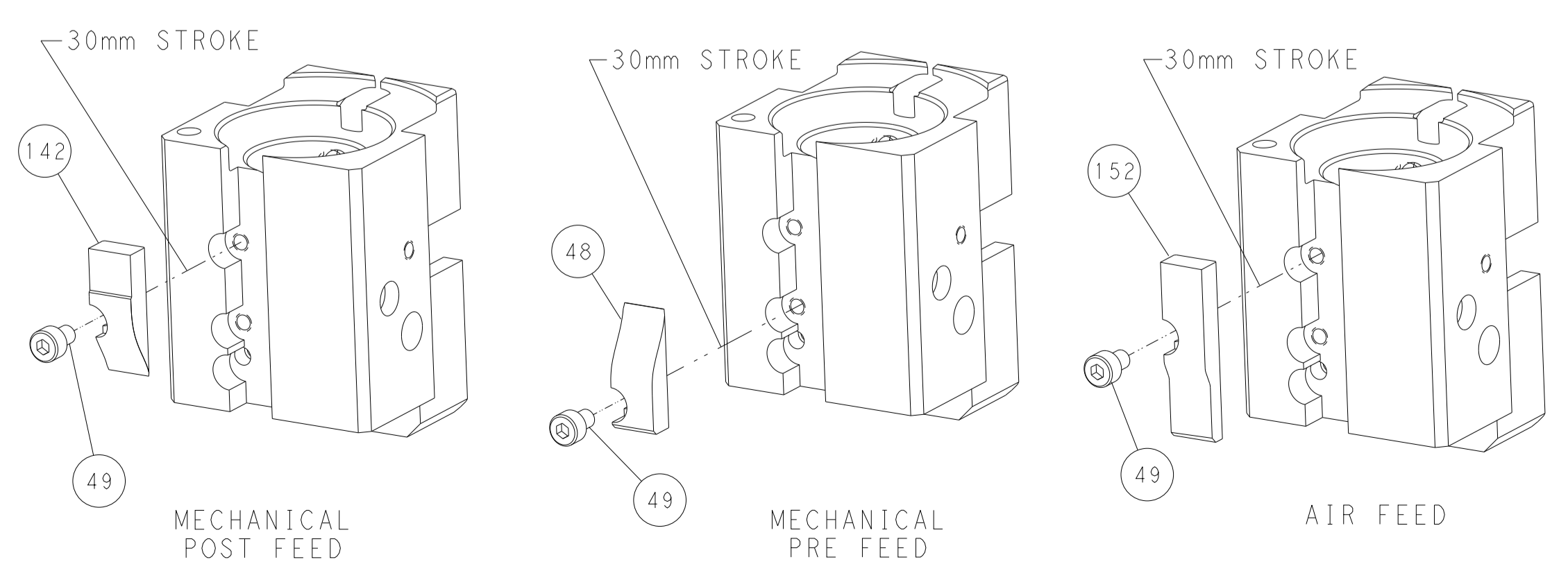


RAM AND HOLDDOWN SET-UP

FEED TYPE
MECHANICAL



CAM POSITIONS



PACIFIC VERSION
 Shown on sheets 3 of 4 & 4 of 4
 (Atlantic version shown on sheets 1 of 4 & 2 of 4)

| | | | |
|--|--|--|--|
| <small>THIS DRAWING IS A CONTROLLED DOCUMENT FOR TYCO ELECTRONICS CORPORATION. IT IS THE PROPERTY OF TYCO ELECTRONICS CORPORATION AND IS NOT TO BE REPRODUCED OR TRANSMITTED IN ANY FORM OR BY ANY MEANS, ELECTRONIC OR MECHANICAL, INCLUDING PHOTOCOPYING, RECORDING, OR BY ANY INFORMATION STORAGE AND RETRIEVAL SYSTEM, WITHOUT THE WRITTEN PERMISSION OF TYCO ELECTRONICS CORPORATION.</small> | | DWN: HOFFNER 11JUN2013 CHK: T. ELBIN 12JUN2013 APVD: T. ELBIN 12JUN2013 | TE Connectivity Harrisburg, PA 17105-3608 |
| DIMENSIONS: mm TOLERANCES UNLESS OTHERWISE SPECIFIED: 0 PLC ± 1 PLC ± 2 PLC ± 3 PLC ± 4 PLC ± ANGLES ± FINISH | | NAME: Ocean End Feed Applier APPLICATION SPEC: - WEIGHT: - SCALE: 1:1 | SIZE: A1 CAGE CODE: 00779 DRAWING NO: C=2150191 SHEET 4 OF 4 REV F |