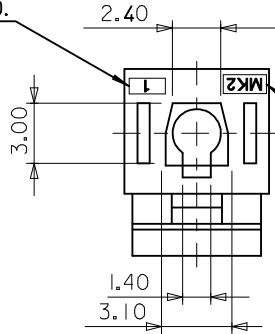
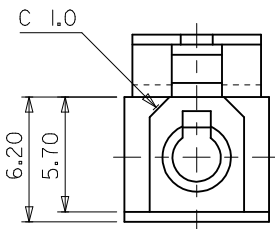
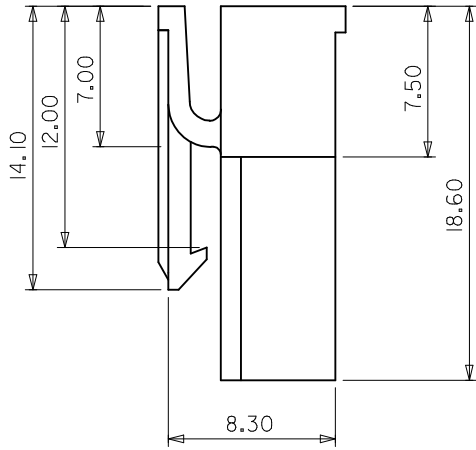
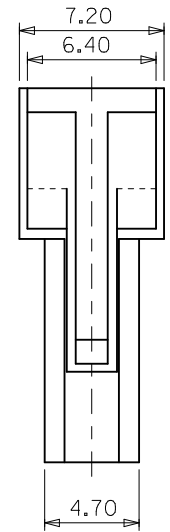


CAVITY NO.  
(1,2...)



TRADE MARK  
(MK2)



NOTES

Ⓑ 1. MATERIAL AND COLOR : SEE TABLE.

TABLE	ENG. NO.	COLOR	MATERIAL
	35108-0192	RED	PET/PC UL94V-0
	35108-0193	YELLOW	
	35108-0194	BLUE	
35108-0196	WHITE		

- 2. PRODUCT SPECIFICATION : PS-35108-001
- 3. MATED WAFER : 35204-01\*\*
- 4. APPLICABLE TERMINAL : 35716-0110

REVISED EC NO: KOR2016-0086 DRWNS: SCHONG03 2016/03/07 CHKD: SHCHU 2016/03/07 APPR: YSK1M02 2016/03/31	QUALITY SYMBOLS ▽=0 ▽=0	GENERAL TOLERANCES (UNLESS SPECIFIED)		DIMENSION STYLE MM ONLY		SCALE	DESIGN UNITS	THIRD ANGLE PROJECTION	
		mm	INCH	DRAWN BY		DATE	TITLE		
		4 PLACES	± ---	± ---	WY. YANG		1996/01/12	2.36 DIA HOUSING-1P	
		3 PLACES	± ---	± ---	CHECKED BY		DATE		
2 PLACES	± 0.30	± ---	BK. CHOI		1996/01/12				
1 PLACE	± 0.30	± ---	APPROVED BY		DATE				
		ANGULAR ± 3 °		CW. LEE		1996/01/12	MOLEX INCORPORATED		
		DRAFT WHERE APPLICABLE MUST REMAIN WITHIN DIMENSIONS		MATERIAL NO.		DOCUMENT NO.	SHEET NO.		
				SEE TABLE		SD-35108-001		1 OF 01	
				SIZE A3		THIS DRAWING CONTAINS INFORMATION THAT IS PROPRIETARY TO MOLEX INCORPORATED AND SHOULD NOT BE USED WITHOUT WRITTEN PERMISSION			