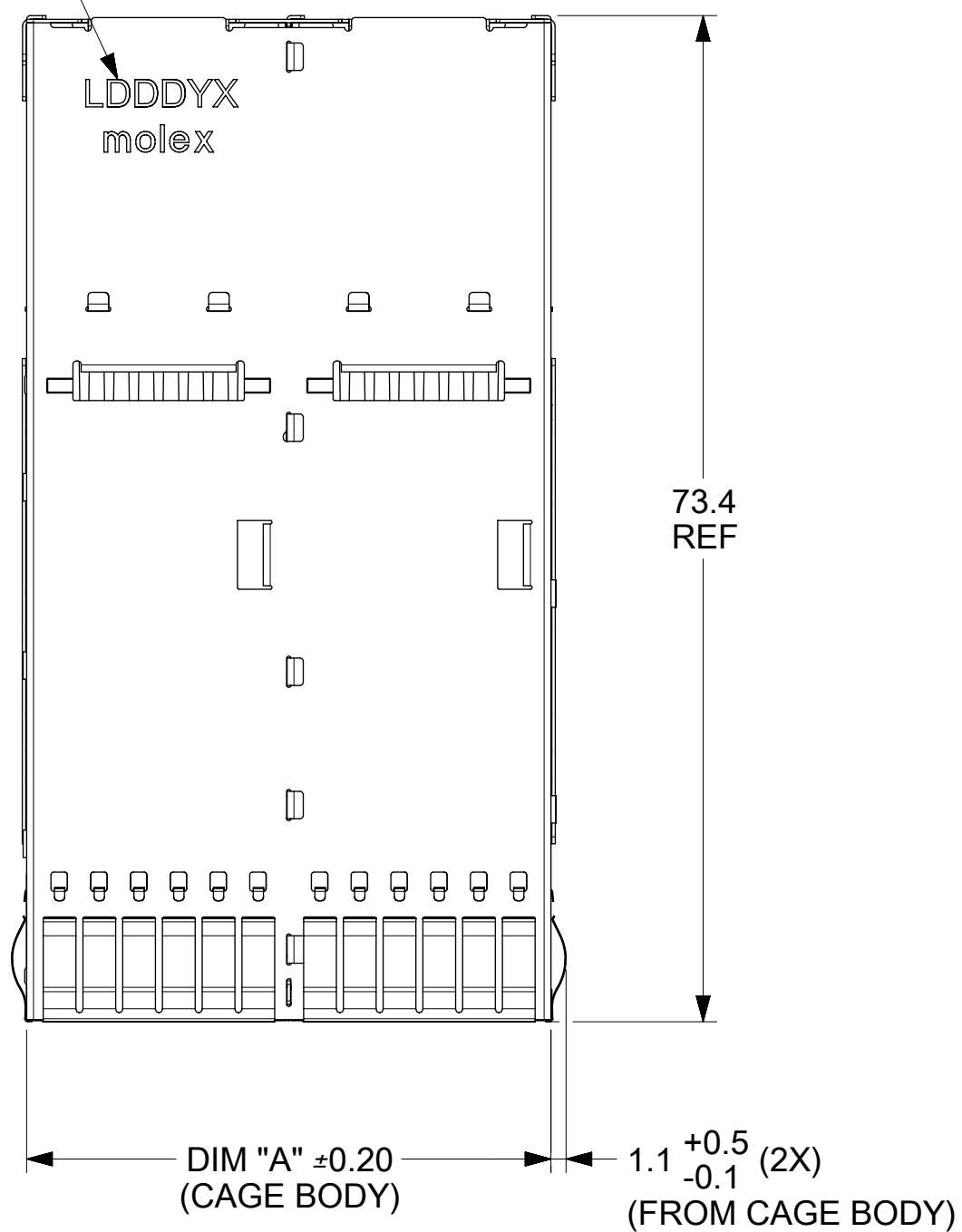


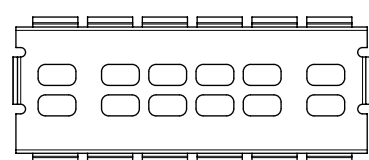
DATE CODE,
FOR ALL VIEW.



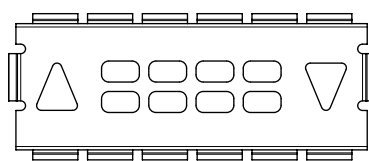
NOTES:

- MATERIAL:
CAGE: NICKEL SILVER, 0.25 THICK
EMI STRAPS: PHOS-BRONZE, 0.10 THICK
LIGHT PIPES: POLYCARBONATE
(PER TELCORDIA-GR-63-CORE-ISSUE3, SECTION 4.2.3.1; R4-43,
DISCRETE STRUCTURAL COMPONENTS CONSTITUTING A FUEL
LOAD OF 1 GRAM OR LESS ARE EXEMPT FROM THE REQUIREMENTS
OF R4-43 (91); UL 94V-0 RATING)
CONNECTOR HOUSING: HIGH PERFORMANCE THERMOPLASTIC, 94V-0
TERMINALS: HIGH PERFORMANCE COPPER ALLOY, 0.18 THICK
- FINISH:
SPRING FINGERS: 0.5µm NICKEL OVERALL
TERMINALS: CONTACT AREA: 0.76µm MIN GOLD OVER 0.5µm MIN NICKEL.
COMPLIANT AREA: 0.76-1.52µm MATTE TIN OVER 1.27µm MIN NICKEL.
- ALL SURFACES TO BE CLASS 'C' OR BETTER PER MOLEX COSMETIC
SPECIFICATION PS-45499-002.
- REFER TO PK-76871-9001 FOR ALL PACKAGING SPECIFICATIONS.
- CONNECTOR INTENDED TO MATE WITH PLUG CABLE SERIES 74757 AND 74758.
- DATE CODE LOCATION SHOWN, DATE CODE FORMAT: LDDDYX
L: MOLEX INTERNAL CONTROL
DDD: DAY OF THE YEAR
Y: LAST DIGIT OF YEAR
X: MOLEX INTERNAL CONTROL

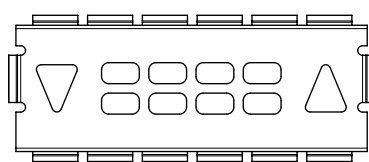
FRONT PLATE OPTIONS



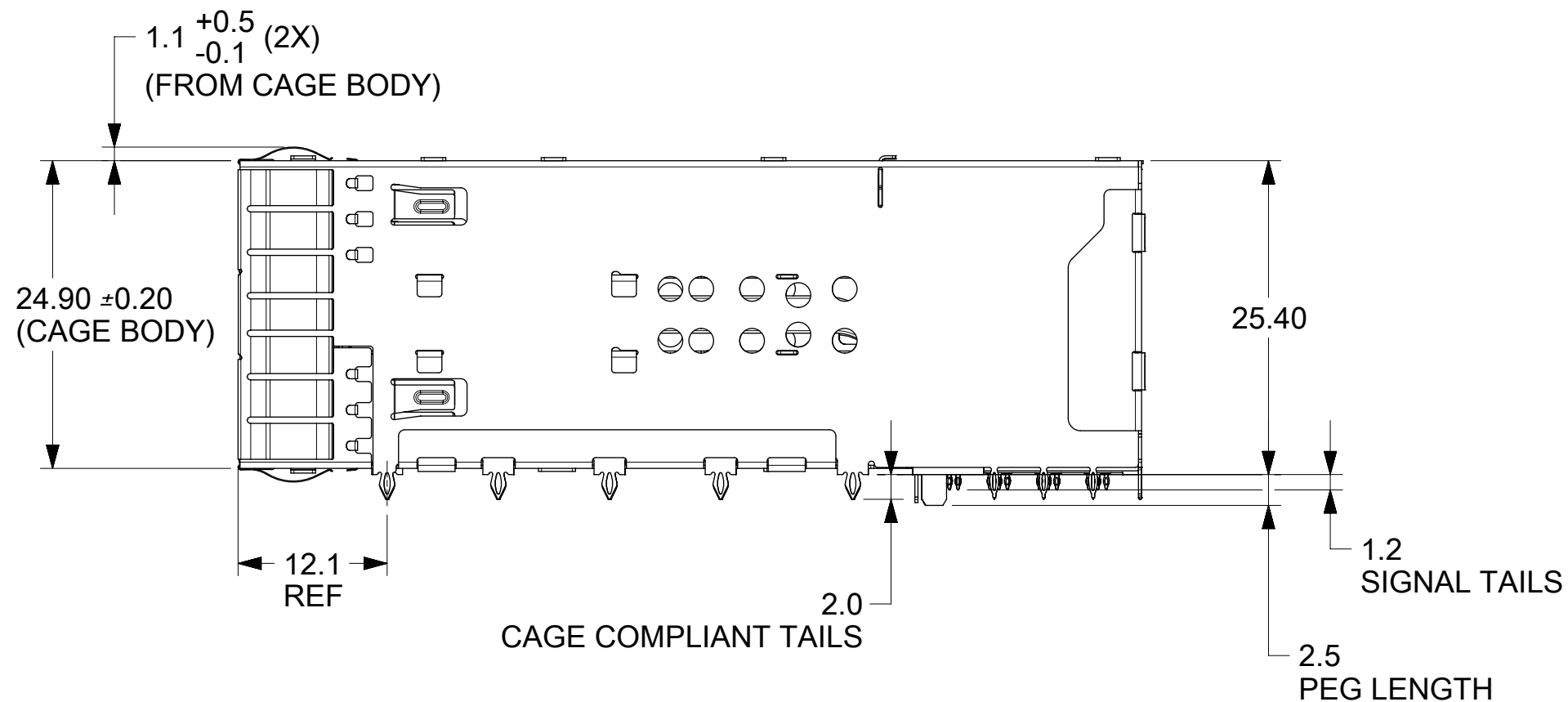
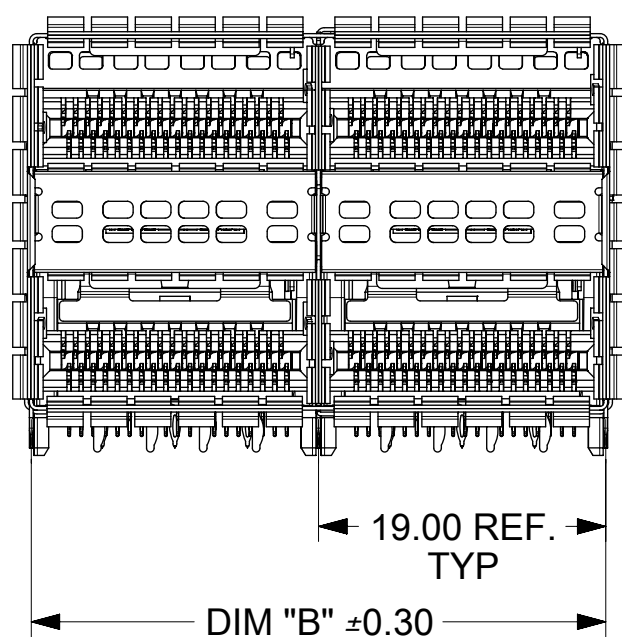
P/N 171722-*001
AIRFLOW ONLY
NO LIGHTPIPE



P/N 171722-*002
UP/DOWN LIGHTPIPE INDICATOR



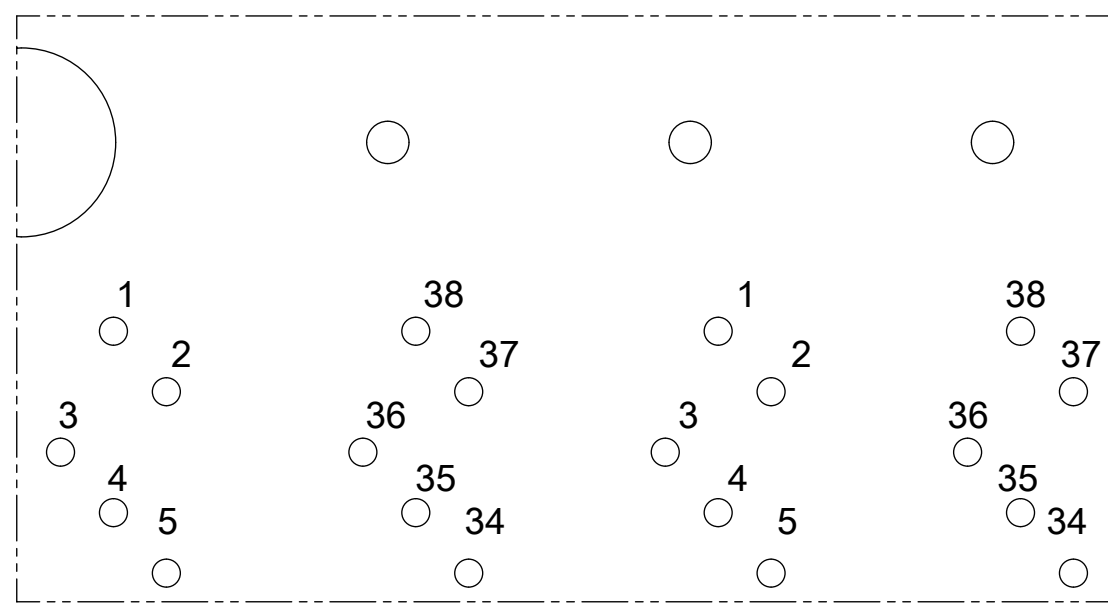
P/N 171722-*003
DOWN/UP LIGHTPIPE INDICATOR



PORT SIZE	PART NUMBER	DIM 'A'	DIM 'B'
2X1	171722-100*	19.25	19.00
2X2	171722-200*	38.25	38.00
2X3	171722-300*	57.25	57.00

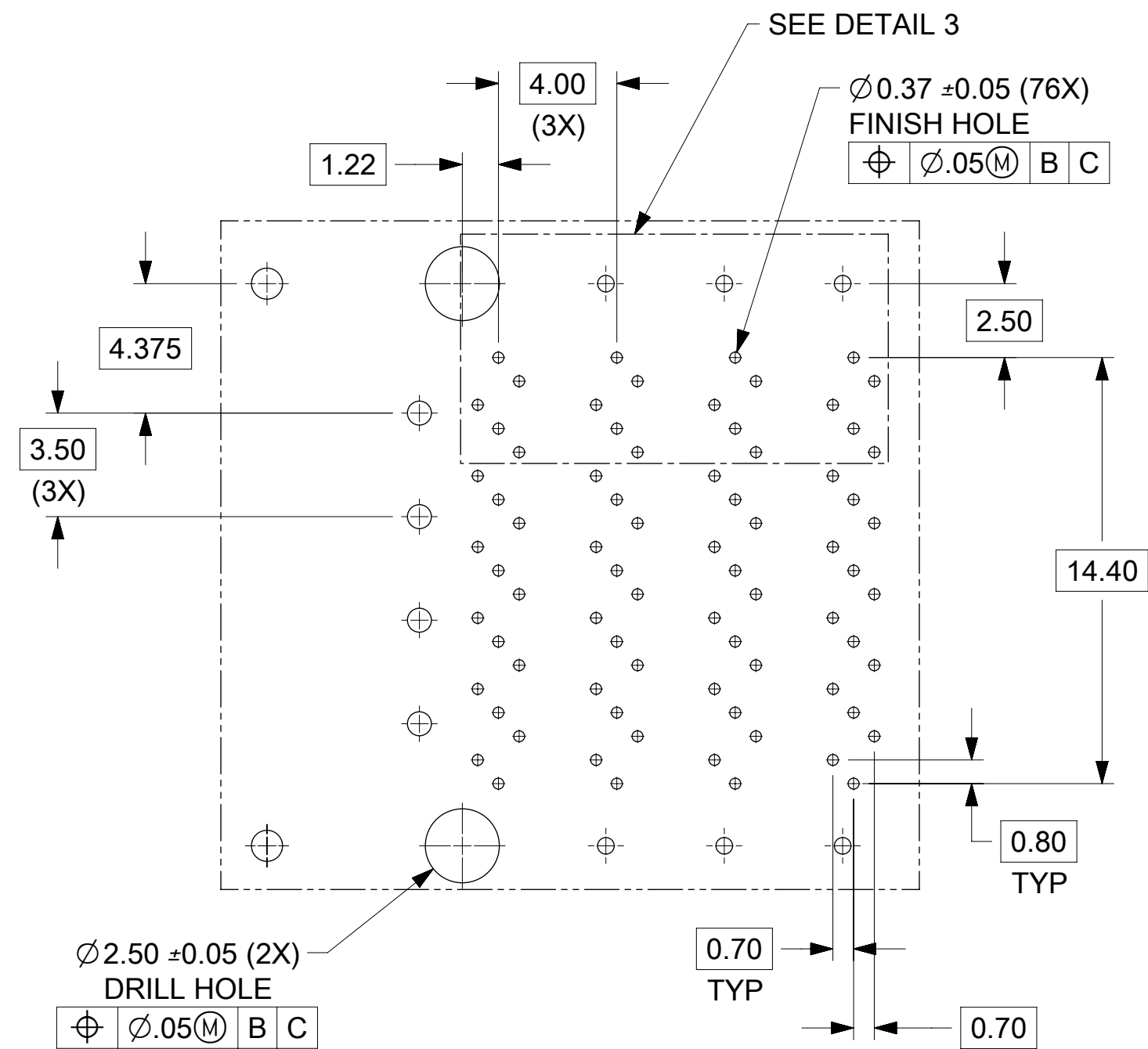
* - DESIGNATES FRONT PLATE OPTIONS

FUNCTIONAL SYMBOLS	THIS DRAWING CONTAINS INFORMATION THAT IS PROPRIETARY TO MOLEX ELECTRONIC TECHNOLOGIES, LLC AND SHOULD NOT BE USED WITHOUT WRITTEN PERMISSION		CURRENT REV DESC: SEE REV. HISTORY				
	DIMENSION UNITS	SCALE					
FA = 0	mm	2:1	EC NO: 648650		ZQSFP+ STACKED CONNECTOR WITH EMI SPRING FINGER		
EA = 0	GENERAL TOLERANCES (UNLESS SPECIFIED)		DRWN: SYANG16 2020/11/05				
EP = 0	ANGULAR TOL ± 0.5°		CHK'D: JLIN47 2020/11/06		PRODUCT CUSTOMER DRAWING		
DIVISIONAL SYMBOLS	4 PLACES ±		APPR: SYANG16 2020/11/09				
	3 PLACES ±		INITIAL REVISION:		DOCUMENT NUMBER SD-171722-2000		
2 PLACES ± 0.13		DRWN: ARIZVI01 2012/08/09		DOC TYPE			
1 PLACE ± 0.25		APPR: MBANAKIS 2012/08/30		PSD	001	A6	
0 PLACES ±		DRAFT WHERE APPLICABLE MUST REMAIN WITHIN DIMENSIONS		MATERIAL NUMBER			SHEET NUMBER
THIRD ANGLE PROJECTION		DRAWING		CUSTOMER			1 OF 4
C-SIZE		SERIES		GENERAL MARKET			
		171722		SEE CHART			

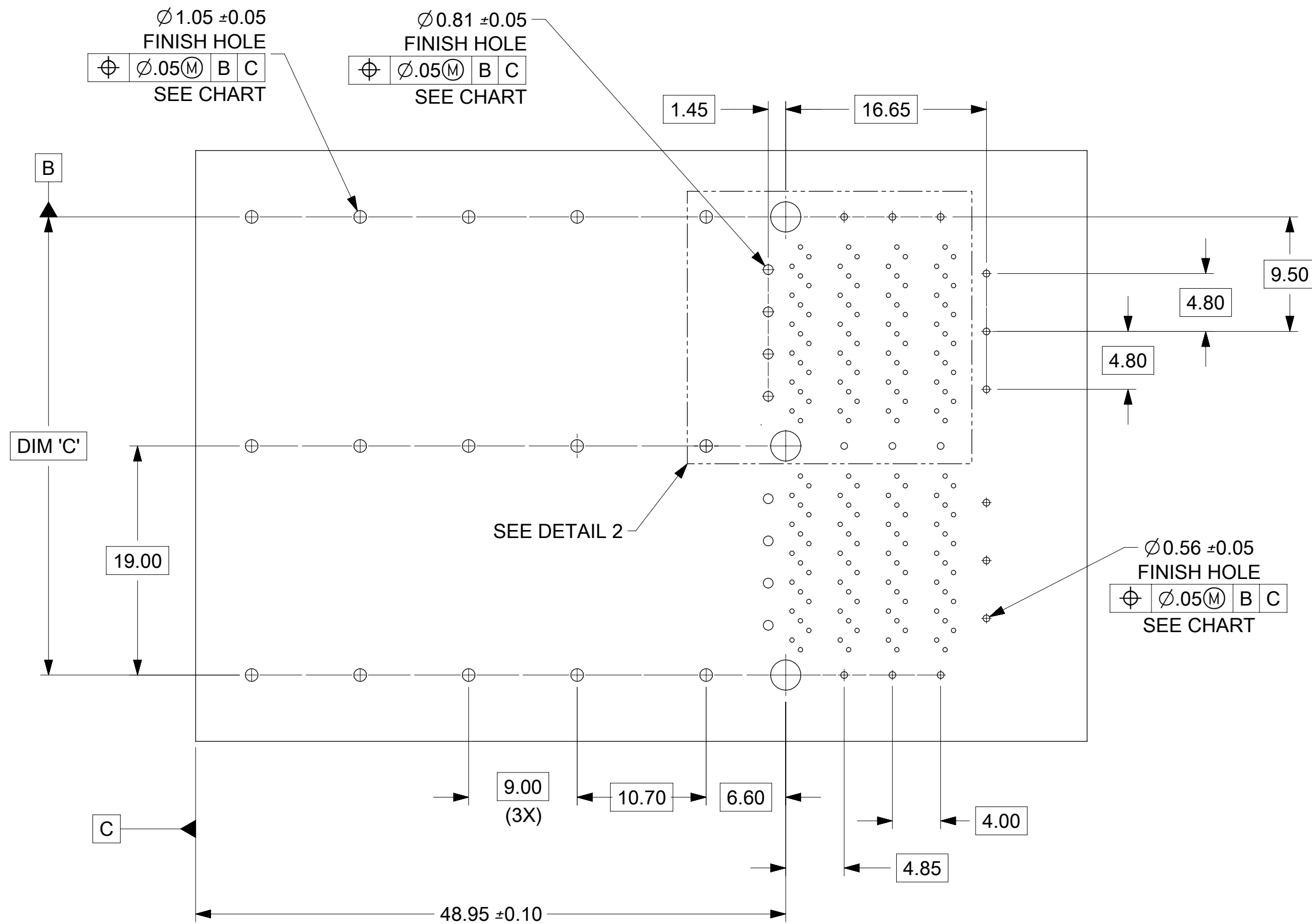


LOWER PORT UPPER PORT

DETAIL 3
PIN ASSIGNMENTS



DETAIL 2
SCALE 5:1



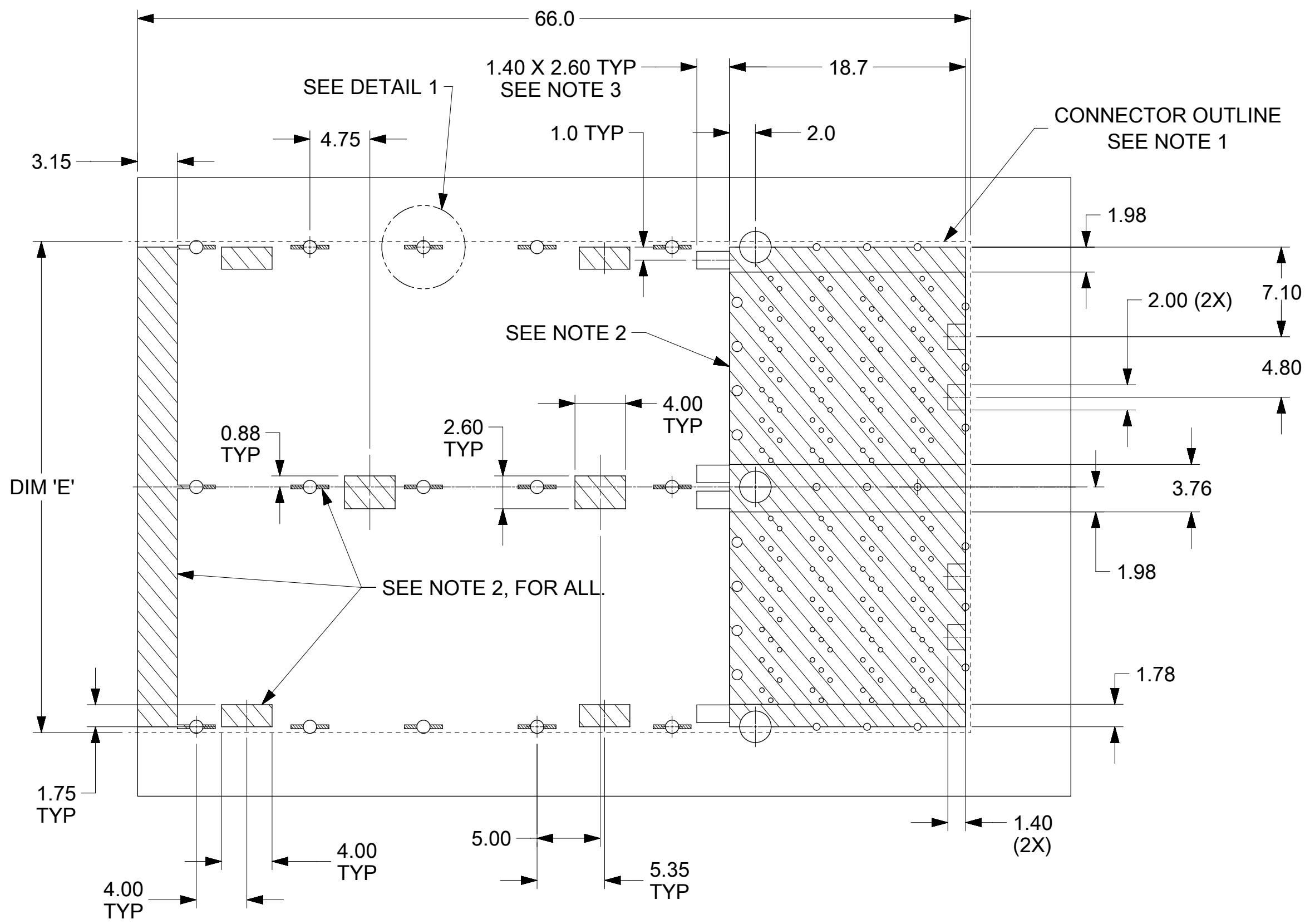
PORT SIZE	DIM 'C'	1.05Ø QUANTITY	0.56Ø QUANTITY	0.81Ø QUANTITY
2X1	19.00	10	9	4
2X2	38.00	15	15	8
2X3	57.00	20	21	12

FUNCTIONAL SYMBOLS FA = 0 FC = 0 FP = 0	THIS DRAWING CONTAINS INFORMATION THAT IS PROPRIETARY TO MOLEX ELECTRONIC TECHNOLOGIES, LLC AND SHOULD NOT BE USED WITHOUT WRITTEN PERMISSION		CURRENT REV DESC: SEE REV. HISTORY					
	DIMENSION UNITS mm	SCALE 3:1	EC NO: 648650					
DIVISIONAL SYMBOLS	GENERAL TOLERANCES (UNLESS SPECIFIED)		DRWN: SYANG16 2020/11/05					
	ANGULAR TOL ± 0.5°		CHK'D: JLIN47 2020/11/06					
4 PLACES ±		APPR: SYANG16 2020/11/09						
3 PLACES ±		INITIAL REVISION:						
2 PLACES ± 0.13		DRWN: ARIZVI01 2012/08/09						
1 PLACE ± 0.25		APPR: MBANAKIS 2012/08/30						
0 PLACES ±		THIRD ANGLE PROJECTION	DRAWING	SERIES	DOCUMENT NUMBER	DOC TYPE	DOC PART	REVISION
DRAFT WHERE APPLICABLE MUST REMAIN WITHIN DIMENSIONS			C-SIZE	171722	SD-171722-2000	PSD	001	A6
		MATERIAL NUMBER		CUSTOMER	SHEET NUMBER			
		SEE CHART		GENERAL MARKET	2 OF 4			

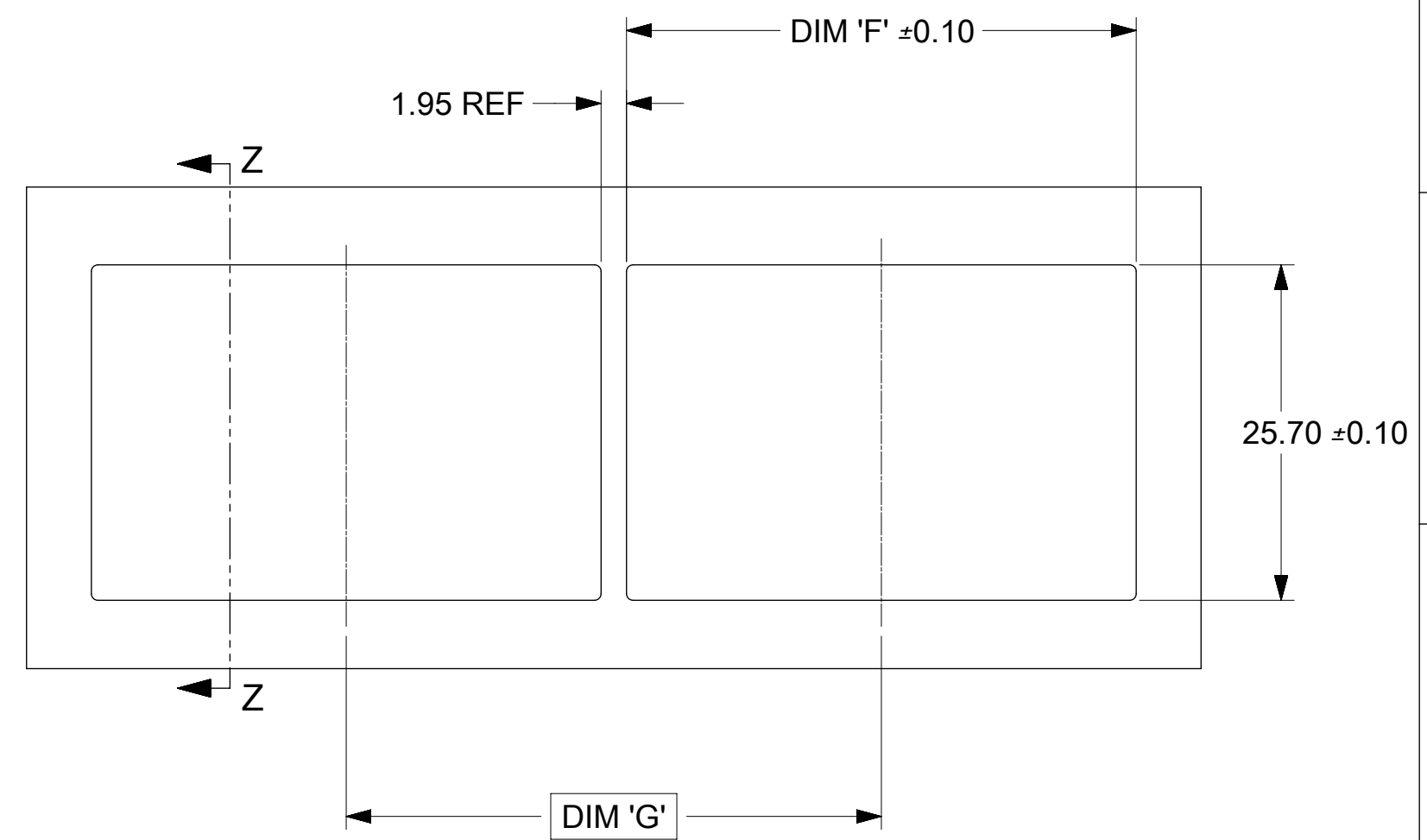


ZQSFP+ STACKED CONNECTOR
WITH EMI SPRING FINGER

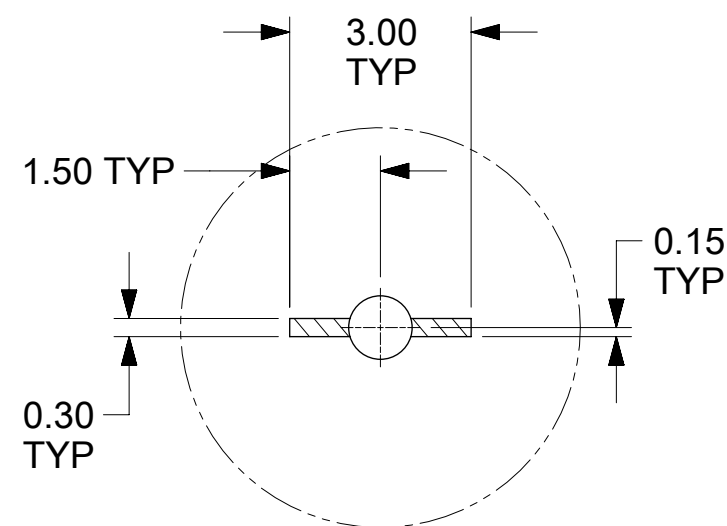
PRODUCT CUSTOMER DRAWING



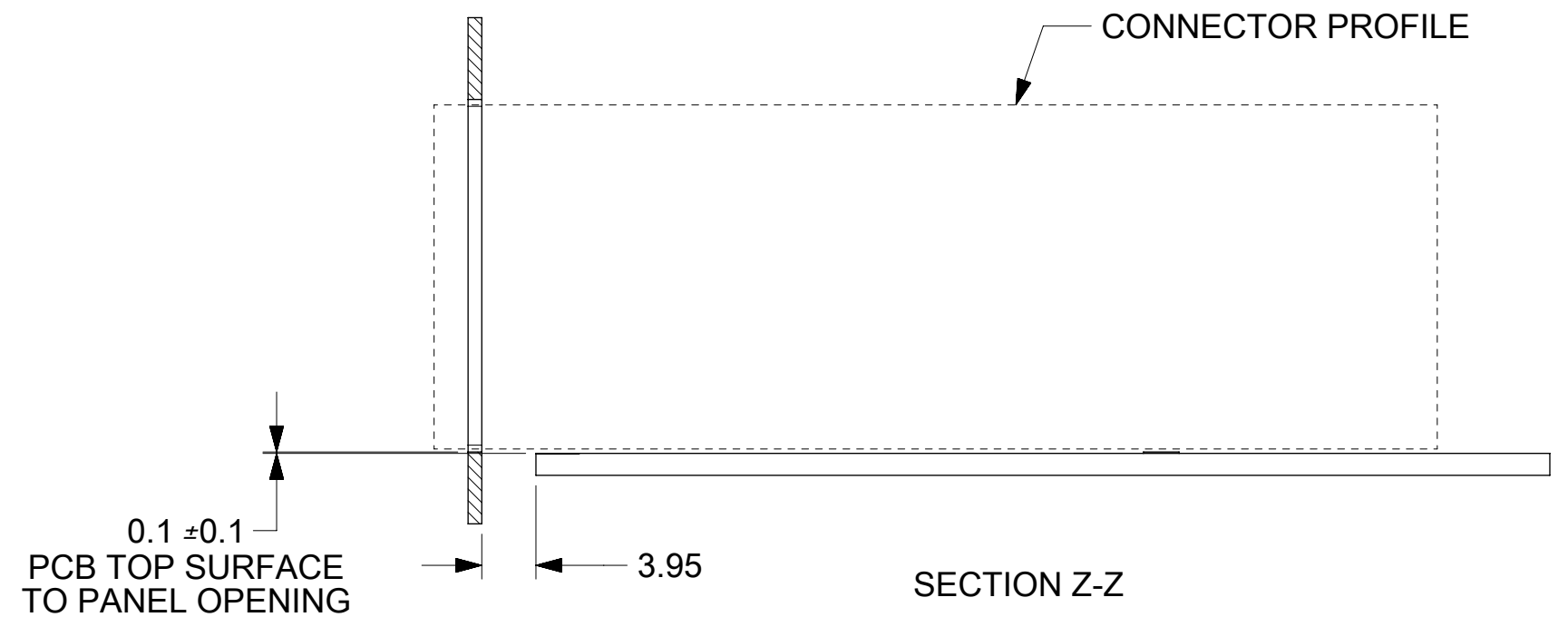
PANEL OPENING AND CONNECTOR SPACING RECOMMENDATIONS



PORT SIZE	DIM 'E'	DIM 'F'	DIM 'G'
2 X 1	19.9	20.05	22.00
2 X 2	38.9	39.05	41.00
2 X 3	57.9	58.05	60.00



DETAIL 1
SCALE 8:1




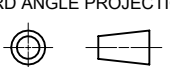
NOTES:

1. THE ENTIRE AREA UNDER THE CONNECTOR IS A KEEP OUT ZONE FOR COMPONENTS AND TRACES, TOP LAYER ONLY, EXCEPT FOR CHASSIS GROUND.
2. CROSS-HATCHED AREAS INDICATE PLACES WHERE THE PLASTIC HOUSING AND METAL CAGE MAY CONTACT PCB SURFACE. THESE AREAS ARE KEEP OUT ZONES. CROSS-HATCHED AREA UNDER THE CONNECTOR ARE TRACE AND VIA KEEP OUT AREAS FOR THE TOP LAYER.
3. THESE 2 RECTANGULAR ZONES ARE FOR LED PLACEMENT. LED HEIGHT SHOULD NOT EXCEED 0.8 AND PLACEMENT SHOULD BE CENTERED WITHIN THIS LED KEEP-IN ZONE.
4. RECOMMENDED LED CHIP PACKAGE SIZE IS 0805.

FUNCTIONAL SYMBOLS	THIS DRAWING CONTAINS INFORMATION THAT IS PROPRIETARY TO MOLEX ELECTRONIC TECHNOLOGIES, LLC AND SHOULD NOT BE USED WITHOUT WRITTEN PERMISSION		
	DIMENSION UNITS	SCALE	CURRENT REV DESC: SEE REV. HISTORY
$\nabla_A = 0$	mm	2:1	EC NO: 648650 DRWN: SYANG16 2020/11/05 CHK'D: JLIN47 2020/11/06 APPR: SYANG16 2020/11/09
$\nabla_C = 0$	GENERAL TOLERANCES (UNLESS SPECIFIED)		
$\nabla_P = 0$	ANGULAR TOL $\pm 0.5^\circ$		INITIAL REVISION: DRWN: ARIZVI01 2012/08/09 APPR: MBANAKIS 2012/08/30
DIVISIONAL SYMBOLS	4 PLACES \pm	3 PLACES \pm	
	2 PLACES ± 0.13	1 PLACE ± 0.25	DOCUMENT NUMBER
	0 PLACES \pm		SD-171722-2000
	DRAFT WHERE APPLICABLE MUST REMAIN WITHIN DIMENSIONS	THIRD ANGLE PROJECTION	DOC TYPE
		DRAWING	PSD
		SERIES	DOC PART
		C-SIZE	001
		171722	REVISION
			A6
			MATERIAL NUMBER
			SEE CHART
			CUSTOMER
			GENERAL MARKET
			SHEET NUMBER
			3 OF 4

H
G
F
E
D
C
B
A

REVISION HISTORY		
DATE	REV.	DESCRIPTION
2019/05/07	A4	1.ADD REVISION HISTORY TABLE. 2.CHG DATE CODE FORMAT TO LDDDYX. 3.UPDATE KEEP-OUT ZONE AND VERBIAGE IN NOTE 1&2, SHEET3.
2020/10/06	A5	1. SHEET 03: G09: ADDED DIMENSION 4.00 TYP 2. UPDATED DRAWING TEMPLATE
2020/11/05	A6	SHEET 1: C07: SYNC. TOLERANCE FOR DIM. 19 AND DIM. B WITH OTHER SD.

FUNCTIONAL SYMBOLS	THIS DRAWING CONTAINS INFORMATION THAT IS PROPRIETARY TO MOLEX ELECTRONIC TECHNOLOGIES, LLC AND SHOULD NOT BE USED WITHOUT WRITTEN PERMISSION										
	DIMENSION UNITS	SCALE	CURRENT REV DESC: SEE REV. HISTORY								
$\frac{F}{A} = 0$	mm	1:1	EC NO: 648650 DRWN: SYANG16 2020/11/05 CHK'D: JLIN47 2020/11/06 APPR: SYANG16 2020/11/09								
$\frac{F}{C} = 0$	GENERAL TOLERANCES (UNLESS SPECIFIED)										
$\frac{F}{P} = 0$	ANGULAR TOL $\pm 0.5^\circ$		INITIAL REVISION: DRWN: ARIZVI01 2012/08/09 APPR: MBANAKIS 2012/08/30							PRODUCT CUSTOMER DRAWING	
DIVISIONAL SYMBOLS	4 PLACES \pm										
	3 PLACES \pm		DOCUMENT NUMBER		DOC TYPE	DOC PART	REVISION	SD-171722-2000 PSD 001 A6			
	2 PLACES ± 0.13		MATERIAL NUMBER		CUSTOMER		SHEET NUMBER				
	1 PLACE ± 0.25		SEE CHART		GENERAL MARKET		4 OF 4				
	0 PLACES \pm		THIRD ANGLE PROJECTION		DRAWING	SERIES					
	DRAFT WHERE APPLICABLE MUST REMAIN WITHIN DIMENSIONS				C-SIZE	171722					

DOCUMENT STATUS	P1	RELEASE DATE	2020/11/09 06:48:34
-----------------	----	--------------	---------------------