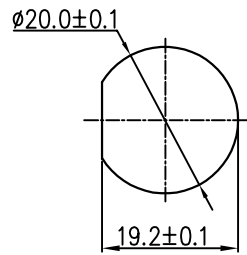
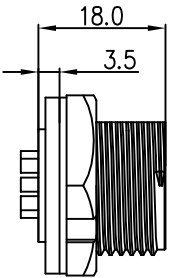


THIS INFORMATION IS CONFIDENTIAL AND IS DISCLOSED TO YOU ON CONDITION THAT NO FURTHER DISCLOSURE IS MADE BY YOU TO OTHER THAN CHOGORI PERSONNEL WITHOUT AUTHORIZATION FROM CHOGORI CORP.

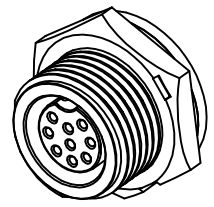
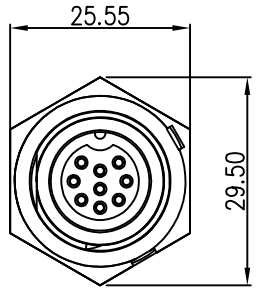
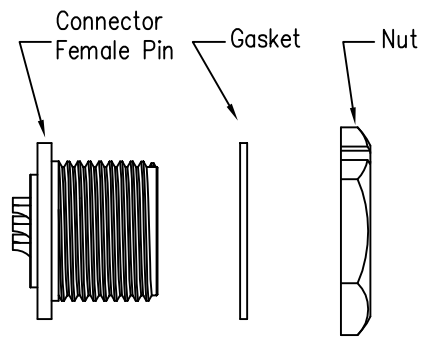
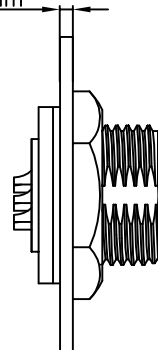
REV.	ECN NO.	DESCRIPTION	SIGN	DATE
C1	N/A	INITIAL DRAWING	Liu	2020/05/13



Recommended Panel Cut-Out



Panel T: Max 3.5mm



- Specification:
- 1.Operation Temperature: $-45^{\circ}\text{C} \sim 105^{\circ}\text{C}$.
 - 2.Insulation Resistance: $100\text{M}\Omega$ at DC500V.
 - 3.Contact Resistance: $<10\text{m}\Omega$.
 - 4.Withstand Voltage: 1300V AC
 - 5.Operating Current: 5A
 - 6.Operating Voltage: DC 60V
 - 7.Waterproof Rate: IP67 (Mated)
 - 8.Housing: Nylon, Black
 - 9.Female Pin: Copper Alloy, Gold Plated
 - 10.Gasket: Silicon Gray
 - 11.Panel Nut: Nylon, Black
 - 12.Torque Rate: $0.8 \sim 1.0\text{N} \cdot \text{m}$
 - 13.RoHS Compliant.
 - 14.UL Compliant.(Only 7Pin & 8Pin)
 - 15.Mating Cap P/N: 806-00021-00

23XXX615-01
Pin Number

7 Pin	8 Pin	9 Pin
P/N: 23007615-01	P/N: 23008615-01	P/N: 23009615-01

Pin Assignments Front View

UNIT:mm		DESCRIPTION Middle Series Screw Type Front Mount With Female Pin
TOLERANCE .X ±0.25 .XX ±0.15 .XXX ±0.05 ANGLES ±1°	SCALE: 1:1	SHEET 1 OF 1
REV. C1	SIZE A4	* : Inspection Item

CHOGORI

PART NO 23XXX615-01	DRAWN BY Liu	DATE 2020/05/17
DWG NO	CHECKED BY Mo	DATE 2020/05/17
CUSTOMER	APPROVED BY Panson	DATE 2020/05/17