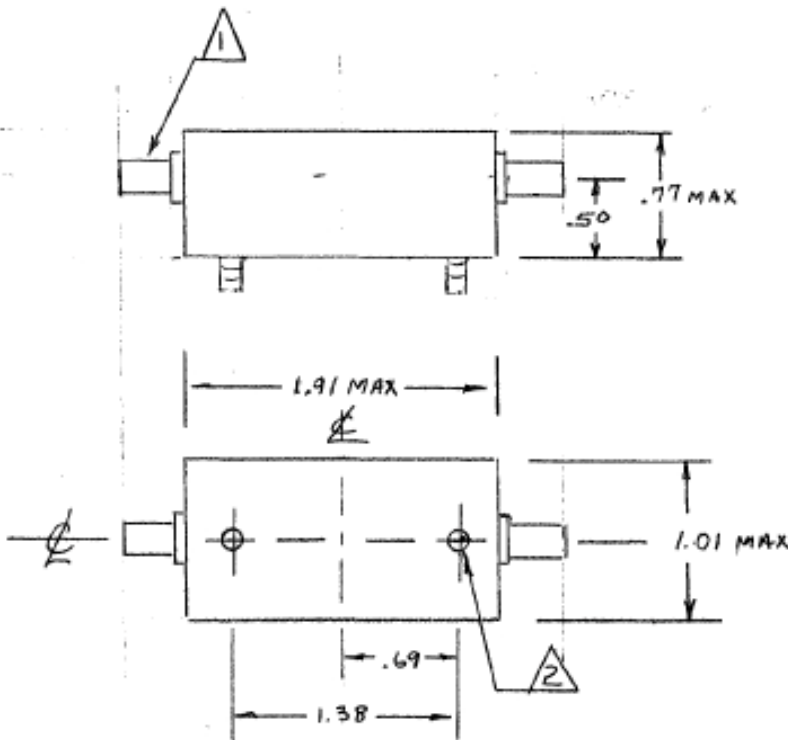




162 MHz Crystal Filter

P/N: AM162CR228

Center Frequency: 162Mhz
3db Bandwidth=100 KHz +/-10 KHz
Insertion Loss over CF +/-10 KHz: 4.5db Max
Rejection at 161.60 MHz &162.4 MHz: 30db min
Max power: 0dbm
Terminations: 50 ohms SMA-Female
Temperature range: 0-50C



NOTES:

1) CONNECTOR, SMA, FEMALE (TYP-ZPL)

2) GND Stud 4-40 UNC-2B, 0.25"
(TYP-ZPL)