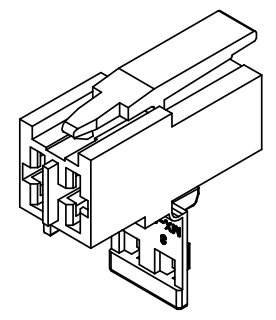
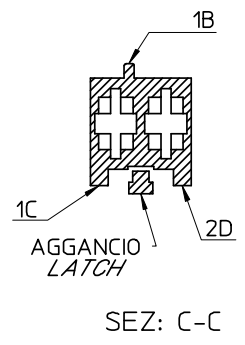


CONFIGURAZIONE POLARIZZAZIONI  
POLARIZATION CONFIGURATION

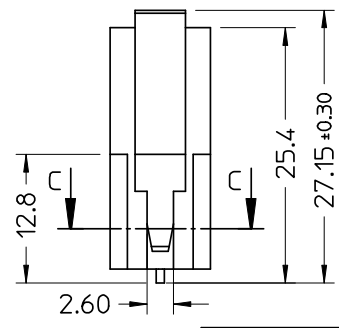
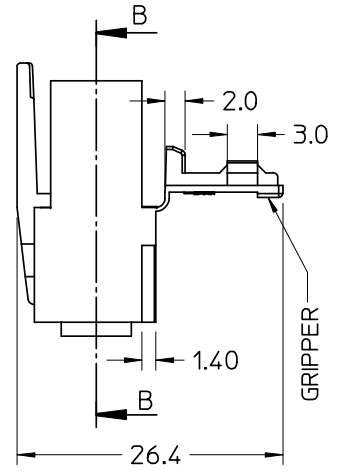
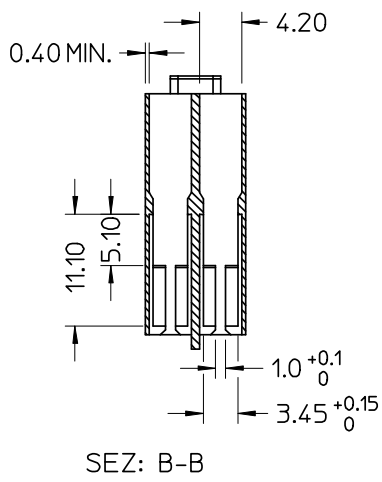
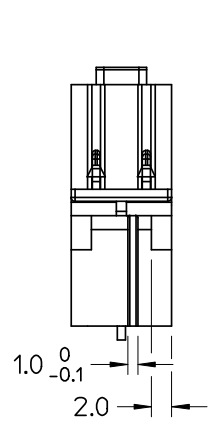


NOTE:  
 - USATO CON TERMINALE 94518-0XXX E 94549-0XXXX  
 - SPECIFICA DI RIFERIMENTO PER IL CONNETTORE PS-94550-001  
 - PER CARATTERISTICHE DI CRIMPATURA RIF. SD-94518-005 E SD-94549-001  
 - FORZA DI DISACCOPIAMENTO CONNETTORE (TRAZIONANDO DAI CAVI SENZA AZIONARE L'AGGANCIAMENTO): 40 N MIN.  
 - SPESSORE MINIMO PARETI CONNETTORE 0.40 mm.

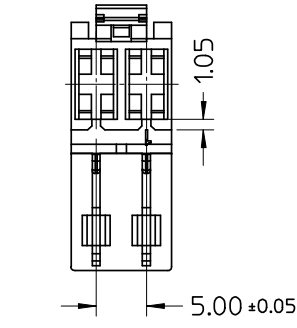
NOTE:  
 - USED WITH RECEPTACLE 94518-0XXX AND 94549-0XXXX  
 - REFER TO PS-94550-001 FOR CONNECTOR SPECIFICATION  
 - REFER TO SD-94518-005 AND SD-94549-001 FOR CRIMPING CHARACTERISTICS  
 - CONNECTOR DISENGAGEMENT FORCE (PULLING BY THE WIRES, WITHOUT ACTUATING THE LATCH): 40 N MIN.  
 - MINIMUM CONNECTOR WALL THICKNESS 0.40 mm

CONFEZIONE: Box da 3500 Pz.  
 PACKAGING: 3500 pcs in carton box

MATERIALE: NYLON 6.6 V0 colore naturale  
 MATERIAL: NYLON 6.6 V0 natural



AGENCY  
 RECOGNIZATIONS  
 CSA (file LR19980)  
 UL (file E-29179)



SPQ =3500

Std. Descr: "HSG W/SEC LOCK AND EXT LATCH 2 CKT \_\_\_\_\_ COLOR"

EC NO: Z2005-0015 DRWN: FGOTTARD 2004/08/24 CHKD: RSANDANO 2004/08/24 APPR: GZUIN 2004/08/25	QUALITY SYMBOLS	GENERAL TOLERANCES (UNLESS SPECIFIED)	SCALE 2:1	DESIGN UNITS METRIC	FIRST ANGLE PROJECTION	REVISE ON CAD ONLY	
	DESCRIPTION ▲ = 0 ▽ = 0	4 PLACES ± --- ± --- 3 PLACES ± --- ± --- 2 PLACES ± 0.10 ± --- 1 PLACE ± 0.2 ± ---	DIMENSION STYLE MM ONLY	TITLE			
		ANGULAR ± 2 °	HSG 2 CKT WITH SEC. LOCK AND EXTERNAL LATCH				
		DRAFT WHERE APPLICABLE MUST REMAIN WITHIN DIMENSIONS	MOLEX INCORPORATED MATERIAL NO. 94550-9502 DOCUMENT NO. SD-94550-016 SHEET NO. 1 OF 1				
THIS DRAWING CONTAINS INFORMATION THAT IS PROPRIETARY TO MOLEX INCORPORATED AND SHOULD NOT BE USED WITHOUT WRITTEN PERMISSION	A3						