

THIS DRAWING IS UNPUBLISHED.

RELEASED FOR PUBLICATION

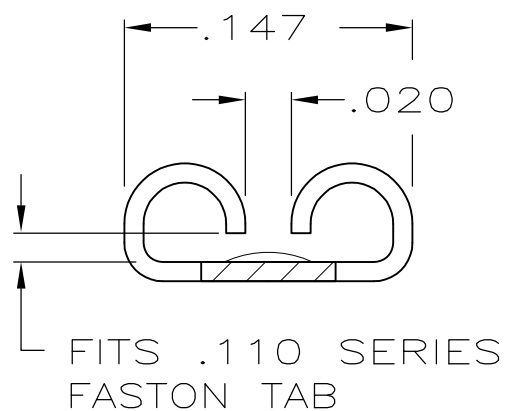
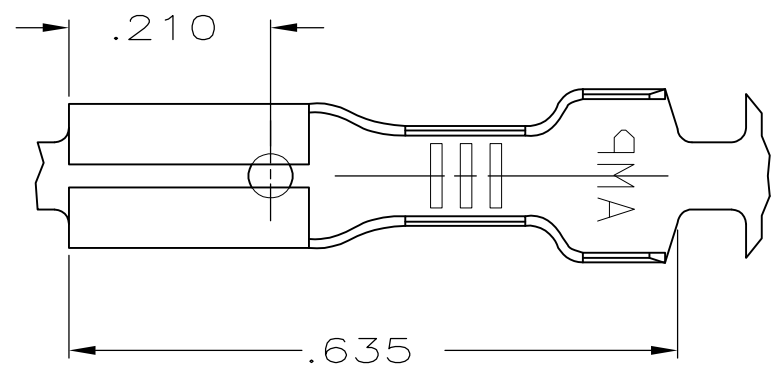
ALL RIGHTS RESERVED.

© COPYRIGHT - By -

LOC AF DIST 50

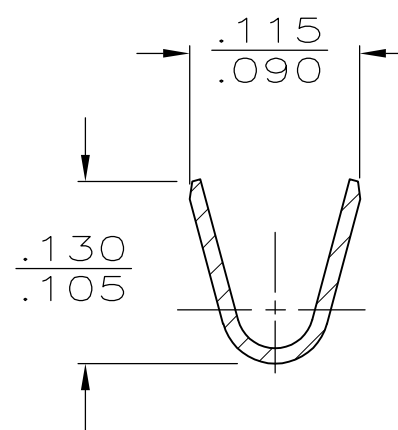
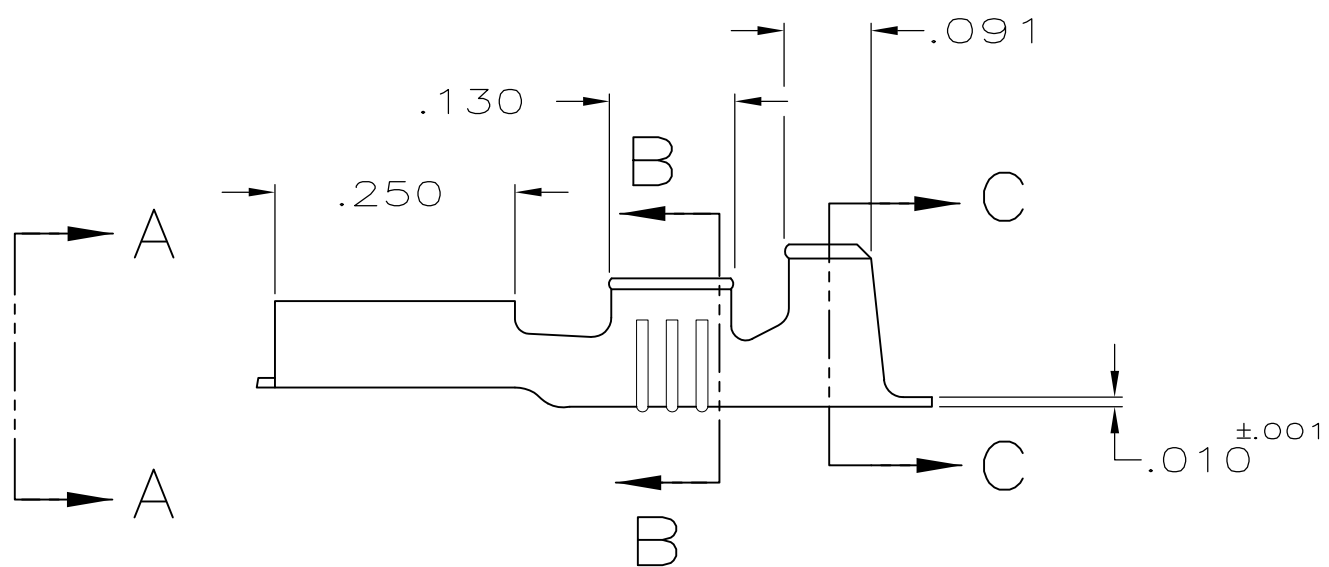
REVISIONS

P	LTR	DESCRIPTION	DATE	DWN	APVD
E		REVISED PER ECR-12-013459	28NOV2012	KH	PD

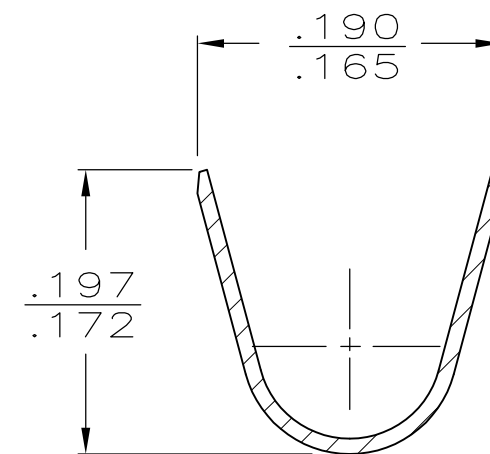


VIEW A-A

- 1 CONTINUOUS STRIP ON REELS.
- 2 MATING TAB THK TO BE $.032 \pm .001$.
- 3 WIRE SIZE IS #20-#16 AWG.
- 4 INSULATION RANGE TO BE $.120-.140$ DIA.



SECTION B-B



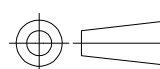
SECTION C-C

.000150 MIN NICKEL	082 STEEL	62050-2
PRE-TIN	BRASS	62050-1
FINISH	MATERIAL	PART NO

TYPE	WIDTH	STRIP LENGTH $\pm .015$	TYPE	WIDTH	$\pm .002$ HEIGHT	WIRE
F	.155	.188	F	.070	.060	16
					.051	18
					.045	20
INSUL BARREL CRIMP			WIRE BARREL CRIMP			

THIS DRAWING IS A CONTROLLED DOCUMENT.

DIMENSIONS: INCHES



TOLERANCES UNLESS OTHERWISE SPECIFIED:

0 PLC	$\pm -$
1 PLC	$\pm -$
2 PLC	$\pm -$
3 PLC	$\pm .015$
4 PLC	$\pm -$
ANGLES	$\pm -$

MATERIAL

SEE TABLE

FINISH

SEE TABLE

DWN JR RUTH 5/15/89

CHK M FEHER 5/15/89

APVD C MEYERS 5/15/89

PRODUCT SPEC

APPLICATION SPEC

114-2036

WEIGHT -

CUSTOMER DRAWING

082 STEEL 62050-2
 BRASS 62050-1
 MATERIAL PART NO



NAME RECEPTACLE, FASTON,™
 .110 SERIES

SIZE CAGE CODE DRAWING NO RESTRICTED TO

A3 00779 C-62050 -

SCALE NTS SHEET 1 OF 1 REV E