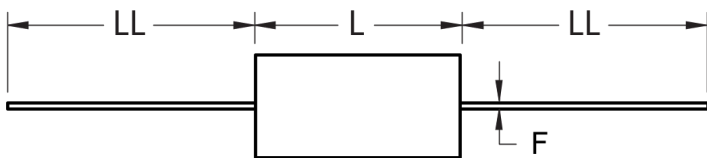
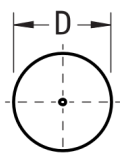


### FRONT VIEW



### SIDE VIEW



Click [here](#) for the 3D model.

#### Dimensions

D	6mm MAX
L	14mm MAX
LL	20mm MIN
F	0.6mm +/-0.05mm

#### Packaging Specifications

Packaging	T&R
Packaging Quantity	1300

#### General Information

Series	A50
Dielectric	Metallized Polyester
Style	Axial
Features	Automotive Grade
RoHS	Yes
Lead	Wire Leads
Qualifications	AEC-Q200
AEC-Q200	Yes
Component Weight	0.6 g
Miscellaneous	Above 85C DC And AC Voltage Derating Is 1.25%/C. maxKO = 11000.

#### Specifications

Capacitance	0.047 uF
Capacitance Tolerance	10%
Voltage AC	200 VAC
Voltage DC	400 VDC, 300 VDC (105C)
Temperature Range	-55/+105°C
Rated Temperature	85°C
Dissipation Factor	0.8% 1kHz, 1.2% 10kHz, 2.5% 100kHz
Insulation Resistance	30 GOhms
Max dV/dt	13.5 V/us
Inductance	7 nH