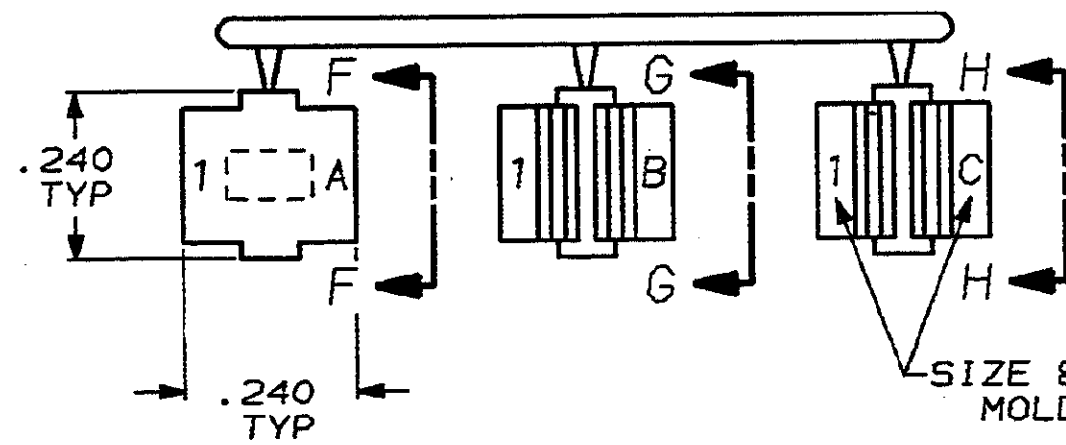


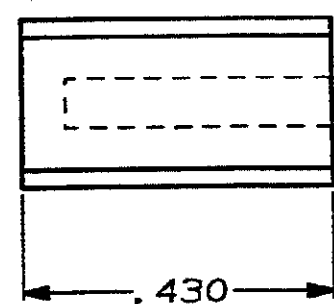
DRAWING MADE IN THIRD ANGLE PROJECTION

THIS DRAWING IS UNPUBLISHED. RELEASED FOR PUBLICATION, 19
 © COPYRIGHT 19 BY AMP INCORPORATED, HARRISBURG, PA. ALL INTERNATIONAL RIGHTS RESERVED. AMP PRODUCTS MAY BE COVERED BY U.S. AND FOREIGN PATENTS AND/OR PATENTS PENDING.

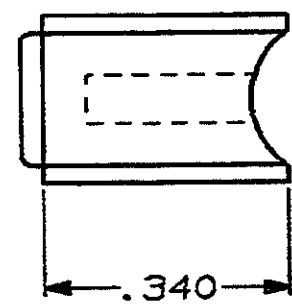
LOC		DIST		P		F		ZONE		LTR		REVISIONS				
BD	39											DESCRIPTION	DATE	APPROVED		
												A	REVISED & REDRAWN	ECN-1465	8-12-86	-



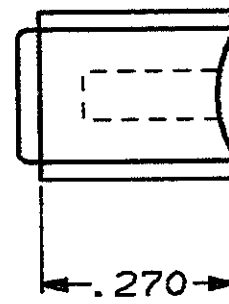
1. GATES ARE SHIPPED ATTACHED TO RUNNER.



VIEW F-F



VIEW G-G



VIEW H-H

AS SHOWN	207468-1
REMARKS	PART NUMBER

UNLESS OTHERWISE SPECIFIED DIMENSIONS ARE IN INCHES TOLERANCES ON:
 2 PL DEC ±
 3 PL DEC ± .005
 ANGLES ±

MATERIAL
 POLYPROPYLENE
 COLOR: BLACK

FINISH

DR *S. Weldon 9/16/86*

CHK *A. Richard 9/16/86*

APPD *S. Schupely 9/16/86*

APPD *-U. Kumar 9/16/86*

PRODUCT SPEC

APPLICATION SPEC

WEIGHT

AMP AMP INCORPORATED
 Harrisburg, Pa. 17105

NAME
 CABLE GATES, FOR SIZE 1, 90° & 180° EXIT, AMPLIMITE®

SIZE	FSCM NO	DRAWING NO
C	00779	207468

SCALE	NTS	SHEET	1 OF 1
-------	-----	-------	--------

1-C	.160
1-B	.140
1-A	
GATE	CABLE DIA REF

AMP 1471-7 REV 10-84

CUSTOMER DRAWING

207468