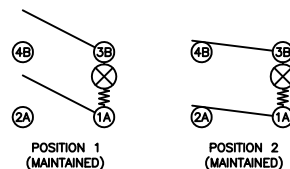


SCHEMATIC



SPECIFICATIONS

FUNCTION:
2P1T OFF-ON

RATINGS:
ANSI/UL 1054 and CAN/CSA C22.2 No. 55 (E194579):
16A 125VAC [cURus]
16A 250VAC [cURus]

CAN/CSA C22.2 No. 55 (233821):
16A 125VAC [CSA]
16A 250VAC [CSA]

DIN 61058-1/VDE 0630-1:2008-09 and EN 61058-1:2002+A2:2008 (40011301):
16(4)A 250~ 1E4 T125/55 [VDE]

ILLUMINATION VOLTAGE:
250V

CONTACT RESISTANCE:
Initial: 20mΩ Max.

INSULATION RESISTANCE:
100MΩ Min. at 500VDC

DIELECTRIC STRENGTH:
1,000VAC For 1 Minute

ELECTRICAL LIFE:
6,000 Cycles [cURus, CSA]
10,000 Cycles [VDE]

TEMPERATURE:
Operating: -20°C to 65°C [cURus, CSA]
Operating: -20°C to 125°C [VDE]

APPROVALS:



COLORS AND MARKINGS

BODY:
Black

RUBBER BODY:
Black

ACTUATOR:
Transparent Green

MARKINGS:
None

MARKING COLOR:
None

MATERIALS

UPPER BODY:
Polyamide 6/6 (PA66), UL94 V-2

LOWER BODY:
Polybutylene Terephthalate (PBT), UL94 V-2

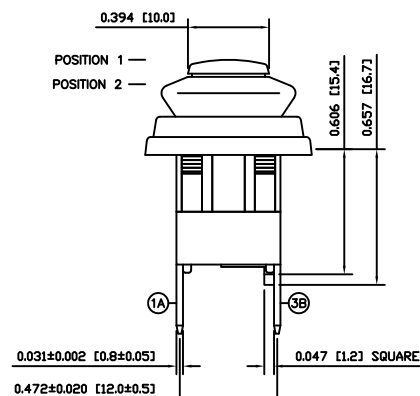
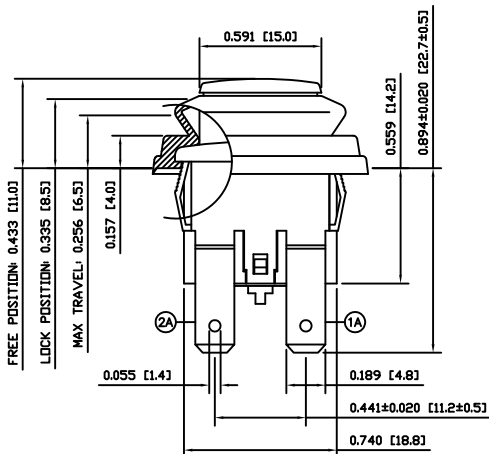
RUBBER BODY:
Rubber

ACTUATOR:
Polycarbonate (PC), UL94 V-2

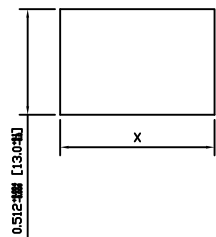
LAMP:
Neon Bulb

CONTACTS:
Silver Alloy

TERMINALS:
Silver Plated Copper



SUGGESTED PANEL CUTOUT



| PANEL THICKNESS | X |
|-------------------------|--------------|
| 0.020~0.050 [0.50~1.20] | 0.748 [19.0] |
| 0.050~0.080 [1.20~2.00] | 0.760 [19.3] |
| 0.080~0.120 [2.00~3.00] | 0.772 [19.6] |

| REVISION | DATE | BY | DESCRIPTION |
|-----------|----------|------|-----------------|
| A | 09/07/16 | CAB | INITIAL RELEASE |
| A | 09/07/20 | CAB | 20005 |
| A | 09/07/20 | CAB | 11/06/16 |
| A | 09/07/20 | CAB | SCALE |
| REFERENCE | REV. | DATE | BY |

THE INFORMATION CONTAINED IN THIS DOCUMENT IS PROPRIETARY TO E-SWITCH AND IS NOT TO BE COPIED OR TRANSFERRED

| INITIAL RELEASE | 20005 | 11/06/16 | CAB |
|-----------------|-------|----------|----------|
| DESCRIPTION | PCR | DATE | DRAWN BY |

| DIMENSIONS | INCHES [MILLIMETERS] |
|--------------------|----------------------|
| GENERAL TOLERANCES | ±0.008 [±0.2] / ±1' |
| SCALE | DRAWING NOT TO SCALE |

| | | | |
|------------------------|---------------|----------|--|
| | | | |
| PA4R12C1000-137 | | | |
| ITEM NUMBER | DATE | REVISION | |
| 14-PA4R12C1000137 | JUNE 16, 2011 | A | |