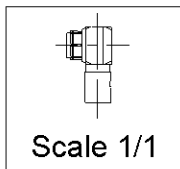
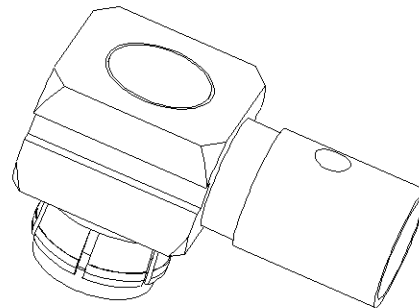
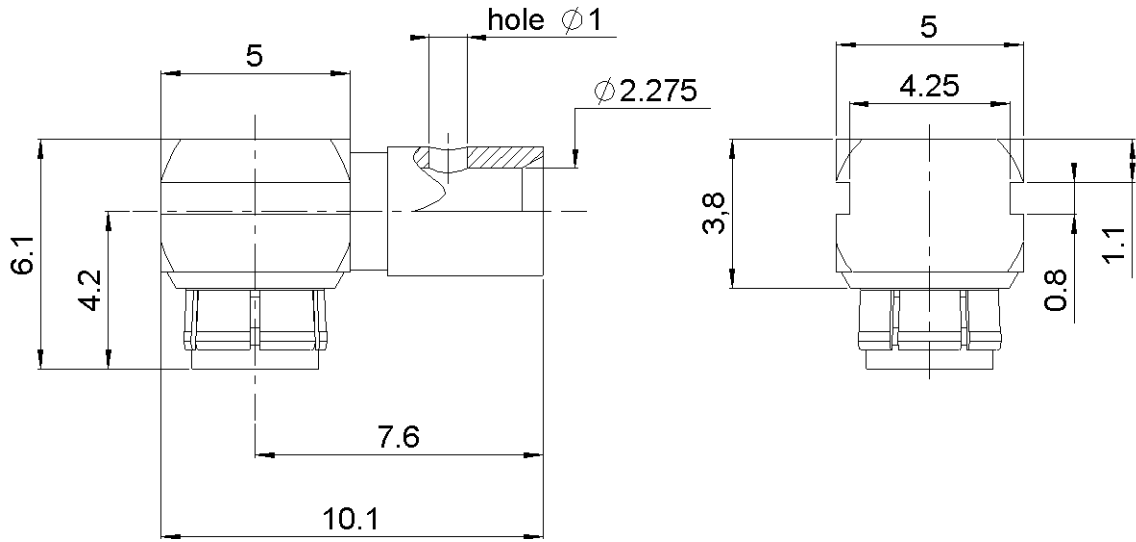


**RIGHT ANGLE PLUG SOLDER TYPE**

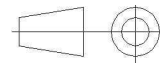
**R223.162.000**

**CABLE .085**

Series : MMBX



All dimensions are in mm.



COMPONENTS	MATERIALS	PLATING (µm)
<b>BODY</b>	<b>BRASS</b>	<b>NPGR</b>
<b>CENTER CONTACT</b>	<b>BERYLLIUM COPPER</b>	<b>NPGR</b>
<b>OUTER CONTACT</b>	<b>BERYLLIUM COPPER</b>	<b>NPGR</b>
<b>INSULATOR</b>	<b>PTFE</b>	
<b>GASKET</b>		
<b>OTHERS PARTS</b>	<b>BRASS</b>	<b>NPGR</b>
-	-	-
-	-	-

Issue : 0736 B

In the effort to improve our products, we reserve the right to make changes judged to be necessary.



**RIGHT ANGLE PLUG SOLDER TYPE**

**R223.162.000**

**CABLE .085**

Series : MMBX

**PACKAGING**

Standard	Unit	Other
<b>100</b>	<b>'W' option</b>	<b>Contact us</b>

**SPECIFICATION**

**ELECTRICAL CHARACTERISTICS**

Impedance		<b>50</b> Ω
Frequency		<b>0-12.4</b> GHz
VSWR	<b>1.20 +</b>	<b>0,0000</b> x F(GHz) Maxi
Insertion loss		<b>0.05</b> √F(GHz) dB Maxi
RF leakage	- (	<b>100</b> - F(GHz)) dB Maxi
Voltage rating		<b>250</b> Veff Maxi
Dielectric withstanding voltage		<b>750</b> Veff mini
Insulation resistance		<b>1000</b> MΩ mini

**CABLE ASSEMBLY**

Stripping	a	b	c	d	e	f
mm	2,60	1,40	0,00	0,00	0,00	0,00

Assembly instruction :

Recommended cable(s)  
RG 405

-  
Characteristics indicated on this data sheet are those that can be achieved with the highest performance cable. Intrinsic limitations of the cable may diminish the performance of the assembly

Cable retention

- pull off **136** N mini
- torque **NA** N.cm

**MECHANICAL CHARACTERISTICS**

Center contact retention		
Axial force – Mating end	<b>10</b>	N mini
Axial force – Opposite end	<b>10</b>	N mini
Torque	<b>NA</b>	N.cm mini

**TOOLING**

Part Number	Description	Hexagon
.	.	.
R282.868.000	EXTRACTION ASSEMBLY TOOL	

Recommended torque		
Mating	<b>NA</b>	N.cm
Panel nut	<b>NA</b>	N.cm
Clamp nut	<b>NA</b>	N.cm
A/F clamp nut	<b>0,0000</b>	mm

**OTHER CHARACTERISTICS**

to 6 GHz  
Interface MMBX only up to 2.5GHz

**ENVIRONMENTAL**

Operating temperature	<b>-55/+155</b>	° C
Hermetic seal	<b>NA</b>	Atm.cm3/s
Panel leakage	<b>NA</b>	

Issue : 0736 B

In the effort to improve our products, we reserve the right to make changes judged to be necessary.



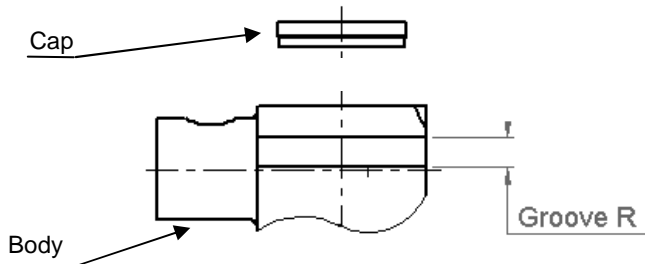
**RIGHT ANGLE PLUG SOLDER TYPE**

**R223.162.000**

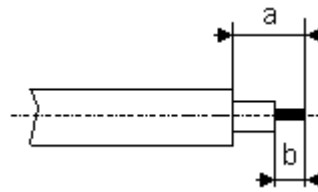
**CABLE .085**

Series : MMBX

**COMPONENTS**



**STRIPPING DIMENSIONS**



We recommend a thermal preconditioning cable.

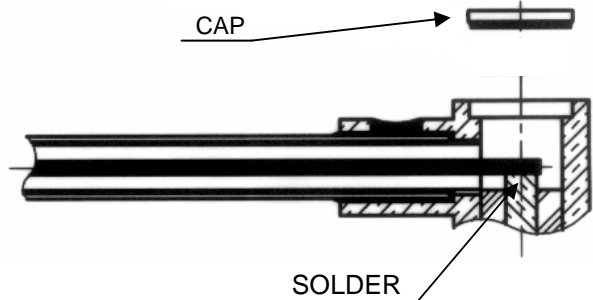
**1**

Strip the cable.  
To tin cable inner conductor.



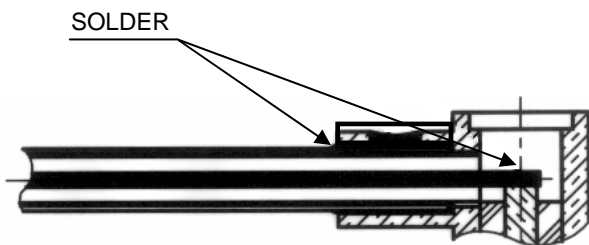
**3**

Press fit the cap.



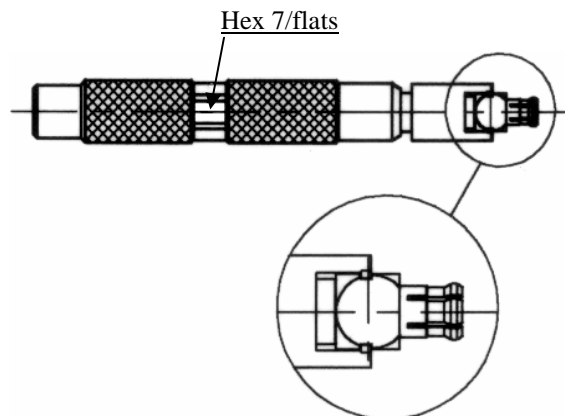
**2**

To push the cable into the connector body until contact with it.  
To solder the cable on the connector body.  
To solder cable inner conductor into the centre contact.  
To clean soldering area.



**4**

Slide mounting tool R282 868 onto the body grooves.  
Press fit the cap turning tool handle with adapted wrench 7mm (cap in the same face).



Issue : 0736 B

In the effort to improve our products, we reserve the right to make changes judged to be necessary.



**RADIALL**®