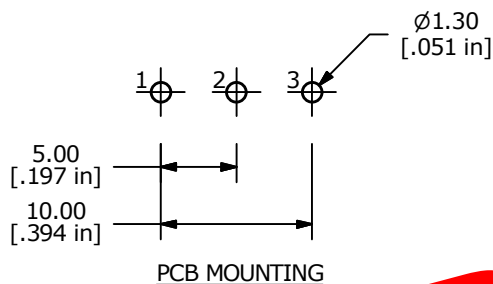
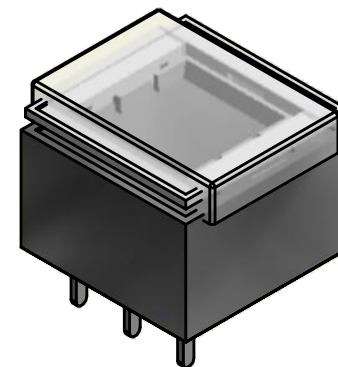
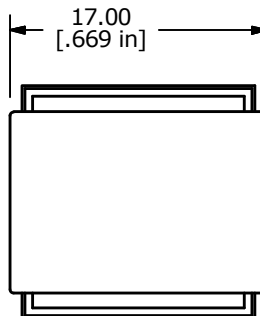
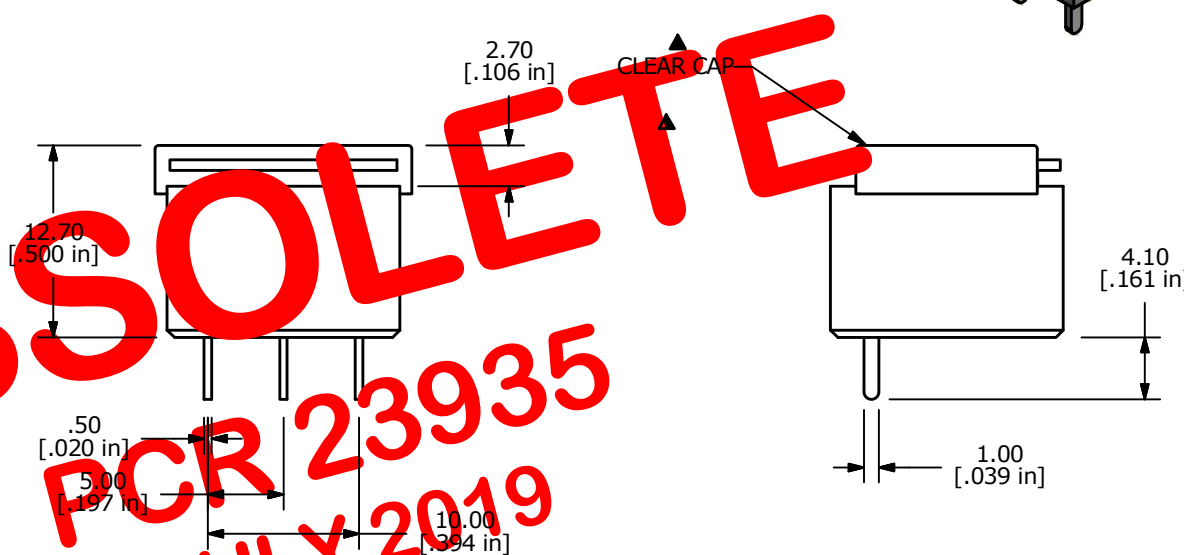


SWITCH SCHEMATIC



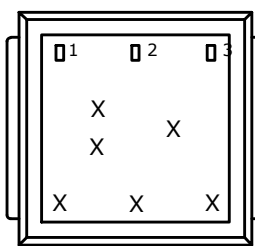
PCB MOUNTING



OBSOLETE

PCR 23935

JULY 2019



NOTES:

1. ALL DIMENSIONS IN MM
2. GENERAL TOLERANCE: X.X=±0.4
X.XX=±0.25
3. TERM. NOS. FOR REFERENCE ONLY.
- ▲ 4. CONTACT RATING: 0.4VA MAX. @ 28V MAX. AC/DC
5. CONTACT MATERIAL: GOLD
6. ELECTRICAL LIFE: 200,000 Typical
7. MECHANICAL LIFE:
1,000,000 CYCLES TYP.
8. OPERATING TEMP: -20°C TO +70°C
9. OPERATING FORCE: 200 ± 100 gf
10. CONTACT RESISTANCE:
100 MILLI-OHM INITIAL TYP. MAX.
11. INSULATION RESISTANCE:
500VDC, 100 MΩ MIN.
12. DIELECTRIC STRENGTH:
1000 VAC FOR 1 MINUTE
13. TRAVEL TO MAKE: 2.20mm ± 0.2
14. 2002/95/EC (ROHS) COMPLIANT
15. ▲ DENOTES CRITICAL PARAMETER



| | | | | |
|-----|--------|------------------------|----------|-----|
| B | 19738 | UPDATE DRAWING | 03/07/11 | BMA |
| A | 18467 | RELEASE FOR PRODUCTION | 04/14/09 | BLR |
| REV | PCR NO | DESCRIPTION | DATE | BY |

| | | | | |
|-----------------------------|-----------|----|---------|-----|
| TITLE ULP12OAP1RSFCL1NILNIL | | | | |
| SCALE | DATE | DR | DWG | REV |
| 2:1 | 4/14/2009 | BF | B800054 | B |

THE INFORMATION CONTAINED IN THIS DOCUMENT IS PROPRIETARY TO E-SWITCH AND IS NOT TO BE COPIED OR TRANSFERRED