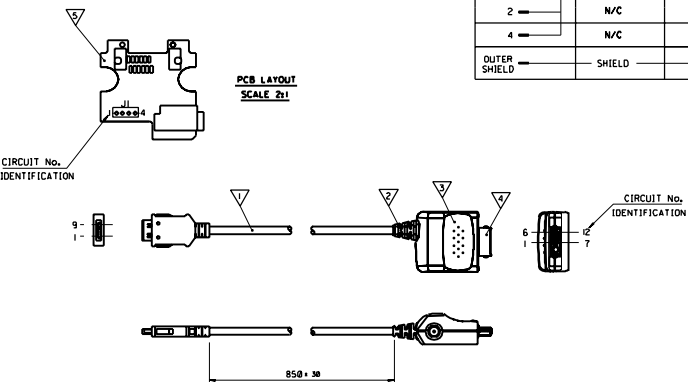
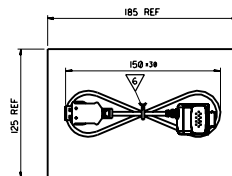
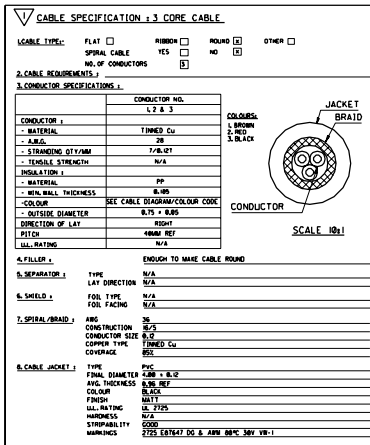
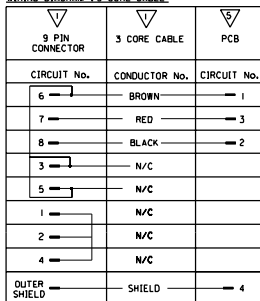


BILL OF MATERIALS

NO.	QTY	SUPPLIER	DESCRIPTION	PART No.	SEE NOTE
1	1	MOLEX	9 PIN CONNECTOR AND 3 CORE CABLE ASSEMBLY REF 2000-0022-01	90848-0352	4, 5
1	1	MOLEX	OVERMOLDED GROMMET AND FERRULE		
1	1	MOLEX	DATA SHELLS KIT	90919-0001	2
1	1	MOLEX	FRICTION LOCK CONTACT UNIT	90982-3001	1, 2
1	1	CDS ELECTRONICS	PRINTED CIRCUIT BOARD	90848-0190	4, 5
1	1	MOLEX	CABLE TIE WRAP	90848-0093	6



WIRING DIAGRAM 3 CORE CABLE



1 : 1 * *
 N.TOWNSE 99/06/10
 D.RYAN 99/06/10
 MWILHITE 99/06/10

PCMCIA CABLE ASSEMBLY

1/2 . 92601-0049 SD-92601-095 1 OF 1

ORIGINAL RELEASE
 1995-0569
 N.TOWNSE 99/07/13
 A

SMT. 1 OF 1		MRI - SD-92601-095																									
MODIFICATION RECORD INDEX																											
ECN	ISS.	DATE	INIT.	SHTS. AFFECTED	DESCRIPTION OF MOD.																						
E1999-0569	A	99.07.13	N.T	1	ORIGINAL RELEASE																						
<table border="1"> <thead> <tr> <th colspan="2">MOLEX EUROPE</th> <th colspan="5">REVISE ONLY ON CAD SYSTEM</th> </tr> <tr> <td colspan="2"> <small>THE ABOVE CARRIER INFORMATION MUST BE REPRODUCED ON ALL MOLEX BOM'S. SAMPLES NOT BE USED WITHOUT WRITTEN PERMISSION.</small> </td> <td colspan="2">CHECK FILENAME</td> <td colspan="3">ISSUE</td> </tr> </thead> <tbody> <tr> <td colspan="2">M0000</td> <td colspan="2"></td> <td colspan="3">A</td> </tr> </tbody> </table>							MOLEX EUROPE		REVISE ONLY ON CAD SYSTEM					<small>THE ABOVE CARRIER INFORMATION MUST BE REPRODUCED ON ALL MOLEX BOM'S. SAMPLES NOT BE USED WITHOUT WRITTEN PERMISSION.</small>		CHECK FILENAME		ISSUE			M0000				A		
MOLEX EUROPE		REVISE ONLY ON CAD SYSTEM																									
<small>THE ABOVE CARRIER INFORMATION MUST BE REPRODUCED ON ALL MOLEX BOM'S. SAMPLES NOT BE USED WITHOUT WRITTEN PERMISSION.</small>		CHECK FILENAME		ISSUE																							
M0000				A																							

LEVEL CHART

1	17	33	49
2	18	34	50
3	19	35	51 LEVEL INDEX
4	20	36	52 RESERVED
5	21	37	53 RESERVED
6	22	38	54 Inspection Ballroom
7	23	39	55 DIMENSIONS
8	24	40	56 TABLES/CHARTS
9	25	41	57 REVISION TEXT & MRI
10	26	42	58 Notes/text - English
11	27	43	59 Bill of materials
12	28	44	60 notes/text - german
13	29	45	61
14	30	46	62 notes/text - french
15	31	47	63 RESERVED
16	32	48	