

STRAIGHT PLUG FEAMLE

WIRING DIAGRAM M12 FEMALE:

3 WIRES

VIEW FROM FRONT SIDE

Pin	Wire color
1	Brown
2	-
3	Blue
4	Black

4 WIRES

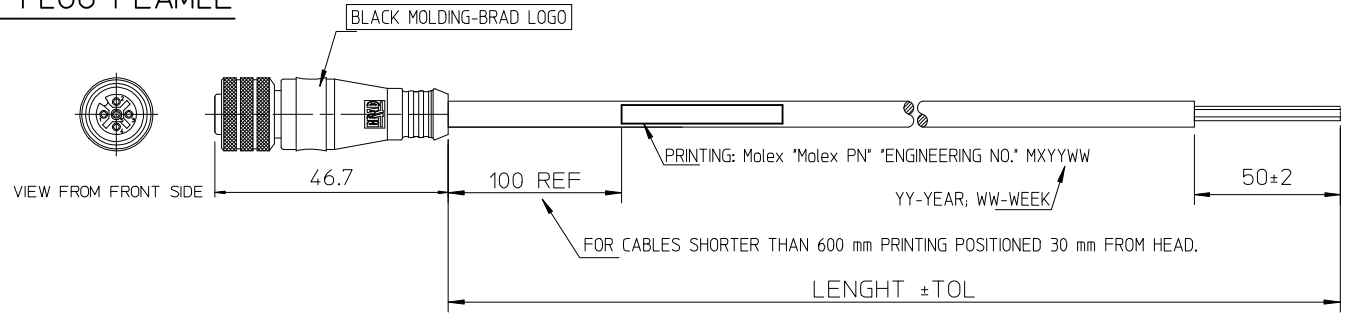
VIEW FROM FRONT SIDE

Pin	Wire color
1	Brown
2	White
3	Blue
4	Black

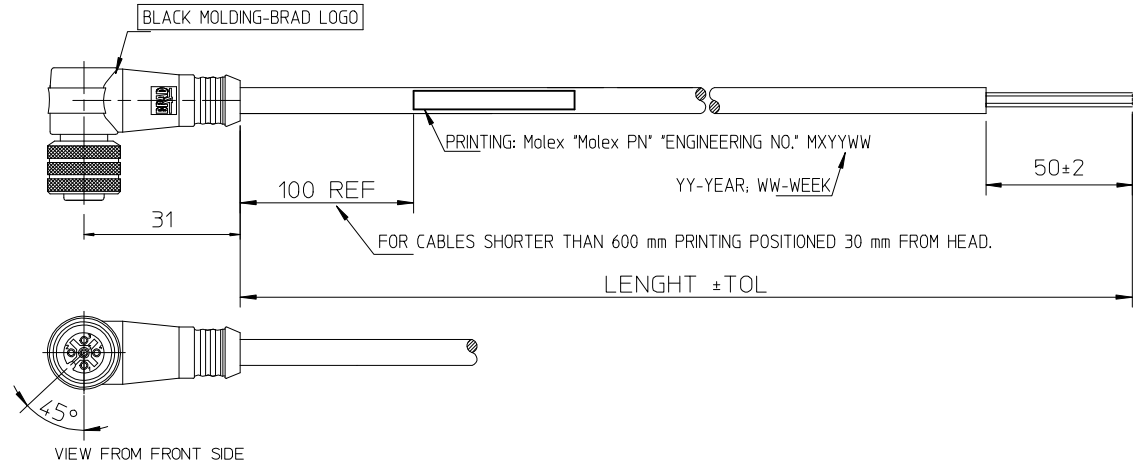
5 WIRES

VIEW FROM FRONT SIDE

Pin	Wire color
1	Brown
2	White
3	Blue
4	Black
5	Grey



90° - PLUG



ENGINEERING P/N KEY DECODING:

0	8	1	2	-	0	X	X	K	F	-	X	X	X	0	0
OVERMOULDED M12 FAMILY					NUMBER OF POLES		TYPE OF CONNECTOR		FEMALE CONNECTOR		LENGTH		TYPE OF CABLE		
					03-3 POLES 04-4 POLES 05-5 POLES		1-STRAIGHT 2-90°				01 = 1m 02 = 2m 05 = 5m 15 = 15m 20 = 20m 90 = 90m		91 = 0.6m 92 = 0.3m 93 = 2.5m 94 = 3.5m 95 = 7.5m		
											1 = PVC BLACK 0.25mm² 2 = PUR/PVC BLACK 0.25mm² E = PVC BLACK 0.5mm² F = PUR BLACK 0.5mm² S = PUR BLACK 0.34mm² D = PUR BLACK 22AWG UL				

TABLE OF TOLERANCES						
CABLE LENGTH IN METER	TILL/DO	OVER - TILL	OVER - TILL	OVER	OVER	OVER
	1m	1-5m	5-10m	10m	20m	30m
MANUFACTURING TOLERANCES MM						
M8/M12 CABLE CONNECTOR MALE OR FEMALE	+20 -10	+25	+30	+30	+50	+60
M8/M12 CABLE CONNECTOR JUMPERCABLE	+20 -10	+25	+30	+30	+50	+60
M23 CABLE CONNECTOR MALE OR FEMALE			+50	+50	+50	+60
M23 CABLE CONNECTOR JUMPERCABLE			+50	+50	+50	+60

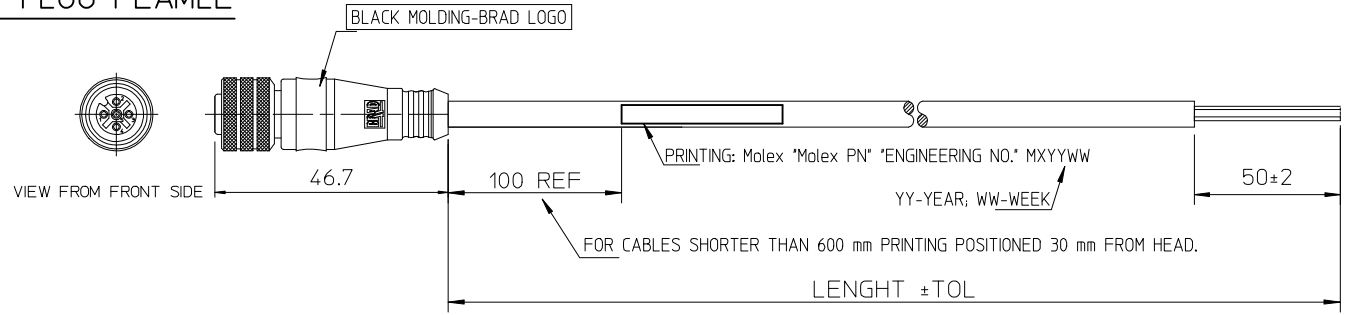
<p>PRINTING UPDATE</p> <p>EC NO: IPG2015-1471</p> <p>DRWN: JMARSZALEK 2013/09/25</p> <p>CHKD: MSZWAJKOWSKI 2013/09/25</p> <p>APPR: MIWASIECZKO 2015/03/20</p>	<p>QUALITY SYMBOLS</p> <p>▽=0</p> <p>◻=0</p>	<p>GENERAL TOLERANCES (UNLESS SPECIFIED)</p> <table border="1" style="width: 100%;"> <thead> <tr> <th></th> <th>mm</th> <th>INCH</th> </tr> </thead> <tbody> <tr><td>4 PLACES</td><td>± ---</td><td>± ---</td></tr> <tr><td>3 PLACES</td><td>± ---</td><td>± ---</td></tr> <tr><td>2 PLACES</td><td>± ---</td><td>± ---</td></tr> <tr><td>1 PLACE</td><td>± ---</td><td>± ---</td></tr> <tr><td>0 PLACE</td><td>± ---</td><td>± ---</td></tr> </tbody> </table> <p>ANGULAR ±---°</p> <p>DRAFT WHERE APPLICABLE MUST REMAIN WITHIN DIMENSIONS</p>		mm	INCH	4 PLACES	± ---	± ---	3 PLACES	± ---	± ---	2 PLACES	± ---	± ---	1 PLACE	± ---	± ---	0 PLACE	± ---	± ---	<p>DIMENSION STYLE</p> <p>MM ONLY</p> <p>DRAWN BY: HWALCZAK</p> <p>DATE: 2012/05/10</p> <p>CHECKED BY:</p> <p>DATE:</p> <p>APPROVED BY: MDYSZEWSKA</p> <p>DATE: 2012/05/28</p> <p>MATERIAL NO.</p> <p>SEE KEY</p> <p>SIZE: A3</p>	<p>SCALE: ---</p> <p>DESIGN UNITS: METRIC</p> <p>FIRST ANGLE PROJECTION</p>	<p>TITLE: CSE M12 XP AC FE XM SE</p> <p style="text-align: center; font-size: 2em; font-weight: bold;">molex</p> <p>DOCUMENT NO.: SD-120065-053</p> <p>SHEET NO.: 1 OF 1</p> <p style="font-size: 0.8em;">THIS DRAWING CONTAINS INFORMATION THAT IS PROPRIETARY TO MOLEX INCORPORATED AND SHOULD NOT BE USED WITHOUT WRITTEN PERMISSION</p>
		mm	INCH																				
	4 PLACES	± ---	± ---																				
	3 PLACES	± ---	± ---																				
2 PLACES	± ---	± ---																					
1 PLACE	± ---	± ---																					
0 PLACE	± ---	± ---																					

STRAIGHT PLUG FEAMLE

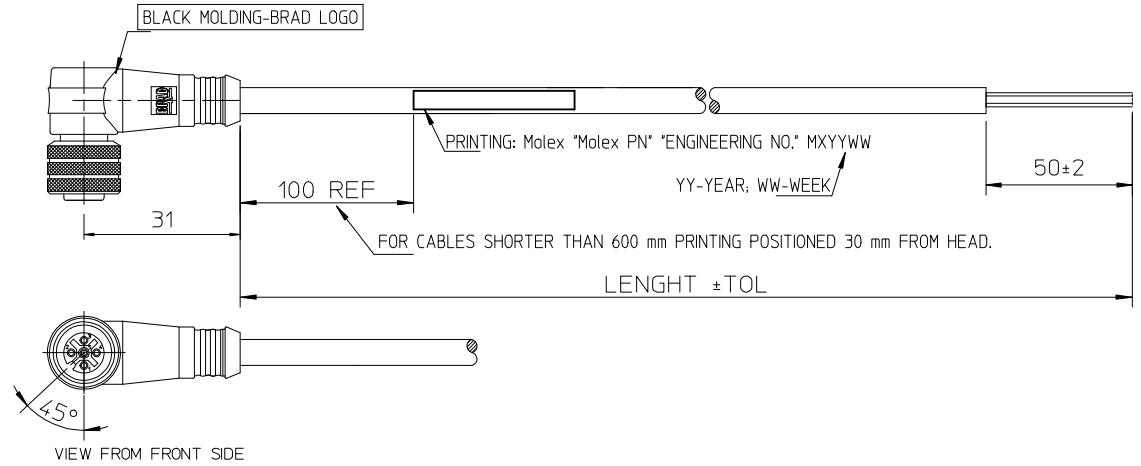
10 9 8 7 6 5 4 3 2 1

WIRING DIAGRAM M12 FEMALE:

3 WIRES		4 WIRES		5 WIRES	
VIEW FROM FRONT SIDE		VIEW FROM FRONT SIDE		VIEW FROM FRONT SIDE	
Pin	Wire color	Pin	Wire color	Pin	Wire color
1	Brown	1	Brown	1	Brown
2	-	2	White	2	White
3	Blue	3	Blue	3	Blue
4	Black	4	Black	4	Black
		5	Grey	5	Grey



90° - PLUG



ENGINEERING P/N KEY DECODING:

0	8	1	2	-	0	X	X	K	F	-	X	X	X	0	0
OVERMOULDED M12 FAMILY					NUMBER OF POLES		TYPE OF CONNECTOR		FEMALE CONNECTOR		LENGTH		TYPE OF CABLE		
					03-3 POLES	1-STRAIGHT				01 = 1m		1 = PVC BLACK 0.25mm ²			
					04-4 POLES	2-90°				02 = 2 m		2 = PUR/PVC BLACK 0.25mm ²			
					05-5 POLES					05 = 5 m		3 = PUR BLACK 0.5mm ²			
										15 = 15 m		4 = PUR BLACK 0.5mm ²			
										20 = 20 m		5 = PUR BLACK 0.34mm ²			
										90 = 90 m		0 = PUR BLACK Z2AWG UL			

CABLE LENGTH IN METER	TILL/DO	OVER - TILL	OVER - TILL	OVER	OVER	OVER
	1m	1-5m	5-10m	10m	20m	30m
MANUFACTURING TOLERANCES MM						
M8/M12 CABLE CONNECTOR MALE OR FEMALE	+20 -10	+25	+30	+30	+50	+60
M8/M12 CABLE CONNECTOR JUMPERCABLE	+20 -10	+25	+30	+30	+50	+60
M23 CABLE CONNECTOR MALE OR FEMALE			+50	+50	+50	+60
M23 CABLE CONNECTOR JUMPERCABLE			+50	+50	+50	+60

PRINTING UPDATE EC NO: IPG2015-1471 DRWN: JMARSZALEK 2013/09/25 CHKD: MSZWAJKOWSKI 2013/09/25 APPR: MIWASIECZKO 2015/03/20	QUALITY SYMBOLS	GENERAL TOLERANCES (UNLESS SPECIFIED)	DIMENSION STYLE	SCALE	DESIGN UNITS	FIRST ANGLE PROJECTION	
	▼=0 ◻=0	mm INCH 4 PLACES ± --- ± --- 3 PLACES ± --- ± --- 2 PLACES ± --- ± --- 1 PLACE ± --- ± --- 0 PLACE ± --- ± ---	MM ONLY	---	METRIC	DRAWN BY: HWALCZAK DATE: 2012/05/10 CHECKED BY: _____ DATE: _____	TITLE: CSE M12 XP AC FE XM SE
		ANGULAR ± --- °	SEE KEY	APPROVED BY: MDYSZEWSKA DATE: 2012/05/28			
		DRAFT WHERE APPLICABLE MUST REMAIN WITHIN DIMENSIONS	SIZE A3	MATERIAL NO.	DOCUMENT NO.	SHEET NO.	
				THIS DRAWING CONTAINS INFORMATION THAT IS PROPRIETARY TO MOLEX INCORPORATED AND SHOULD NOT BE USED WITHOUT WRITTEN PERMISSION	SD-120065-053	1 OF 1	

9 8 7 6 5 4 3 2 1