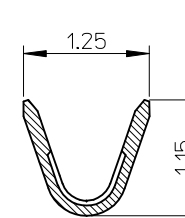
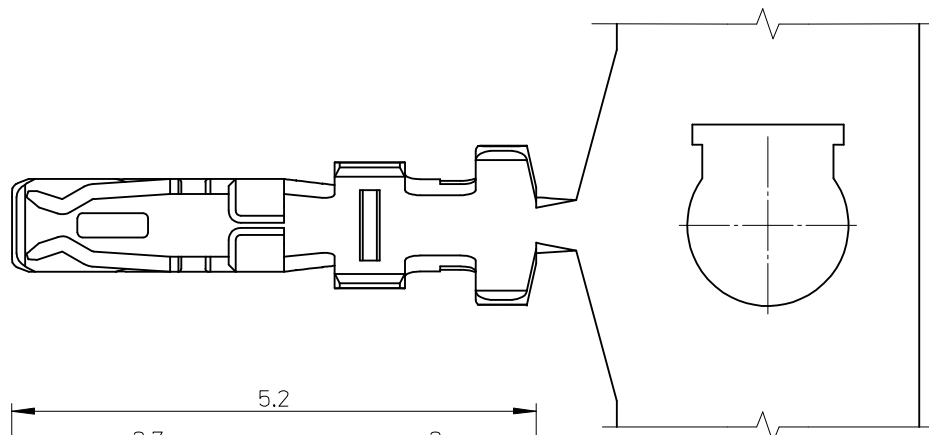
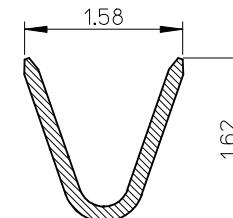


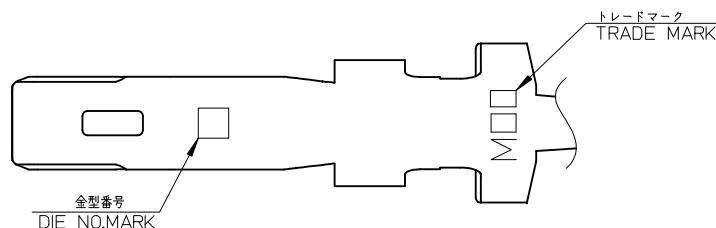
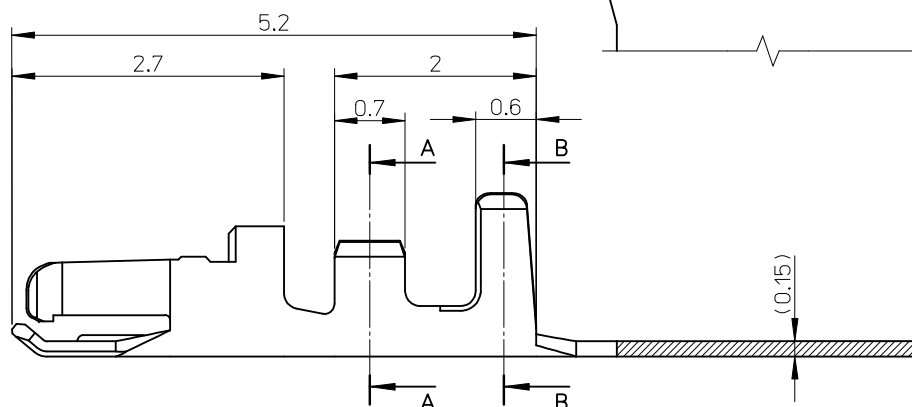
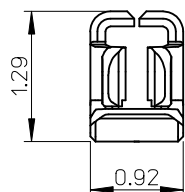
ELV AND RoHS COMPLIANT



SECTION A-A



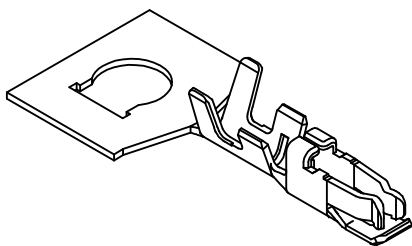
SECTION B-B



NOTES

- 適合ハウジング : 504186-****, 504193-****
APPLICABLE HOUSING : 504186-****, 504193-****
- アプリケーション仕様書 (コネクタ取扱説明書) : AS-504186-001/-002
AS-504193-001/-002
APPLICATION SPECIFICATIONS (CONNECTOR MANUAL) : AS-504186-001 / -002
AS-504193-001 / -002
- 圧着条件については、圧着仕様書 (CS-504185-002) を参照願います。
PLEASE REFER TO CRIMP SPECIFICATION (CS-504185-002).
- 製品仕様書 : PS-504186-001 / PS-504193-001
PRODUCT SPECIFICATION : PS-504186-001 / PS-504193-001
- 圧着視覚教材 (品質要領書) : ATS-57427-0000
CRIMPING VISUAL AID : ATS-57427-0000

5041851000	連鎖状 CHAIN
リール REEL PACKAGE	端子形状 FORM
オーダー番号 ORDER NO.	



MATERIAL 材料 銅合金, 錫めっき PRE-TINNED COPPER ALLOY	WIRE RANGE 適用電線範囲 AWG : #26~#30 MM ² : 0.079~0.136	INS. RANGE 被覆外径 φ0.78~φ1.02	REVISED EC NO: J2016-0791 DRW:SSAT002 2016/01/21 CHKD: APPR:TKANEKO 2016/01/27	GENERAL TOLERANCES (UNLESS SPECIFIED)		DIMENSION STYLE MM ONLY		SCALE 20:1	DESIGN UNITS METRIC	THIRD ANGLE PROJECTION
				0.25 UNDER ±0.03 0.25 OVER 0.5 UNDER ±0.05 0.5 OVER 1.0 UNDER ±0.1 1.0 OVER 10 UNDER ±0.2 10 OVER 30 UNDER ±0.25 30 OVER ±0.3 ANGULAR ±1 °	DRAWN BY DATE SSAT002 2013/07/25 CHECKED BY DATE KASAKAWA 2013/07/30 APPROVED BY DATE NUKITA 2013/08/08	TITLE 1.25 W/B CONN. REC. CRIMP TERM.		MATERIAL NO. SEE CHART	DOCUMENT NO. SD-504185-001	SHEET NO. 1 OF 1
DRAFT WHERE APPLICABLE MUST REMAIN WITHIN DIMENSIONS						SIZE A3	THIS DRAWING CONTAINS INFORMATION THAT IS PROPRIETARY TO MOLEX ELECTRONIC TECHNOLOGIES, LLC AND SHOULD NOT BE USED WITHOUT WRITTEN PERMISSION			