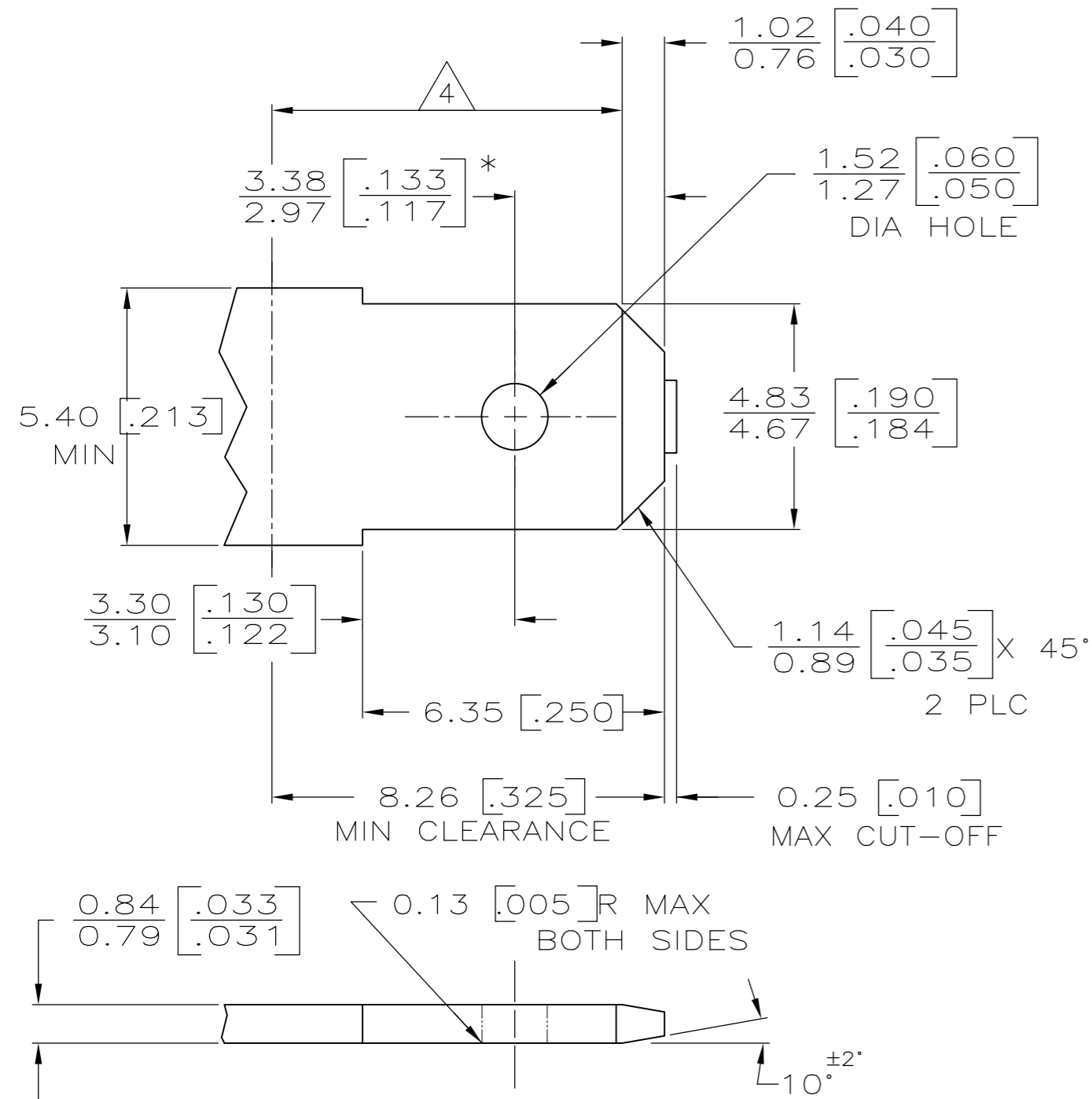


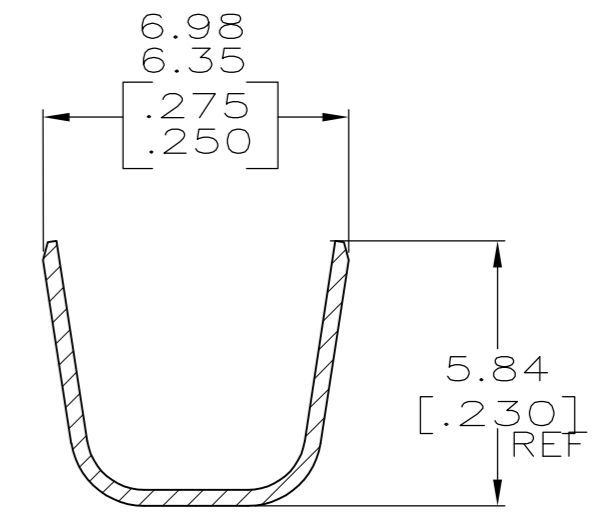
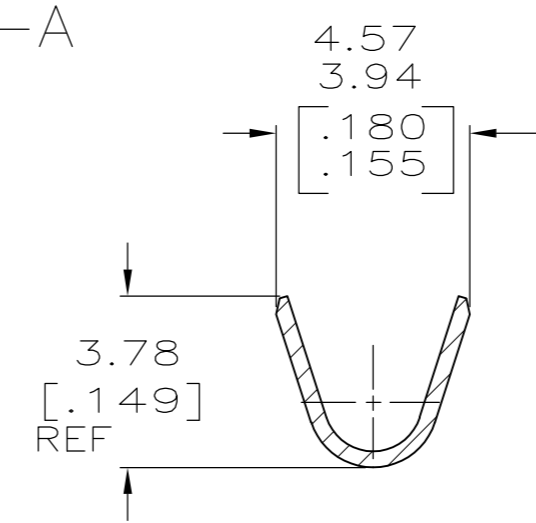
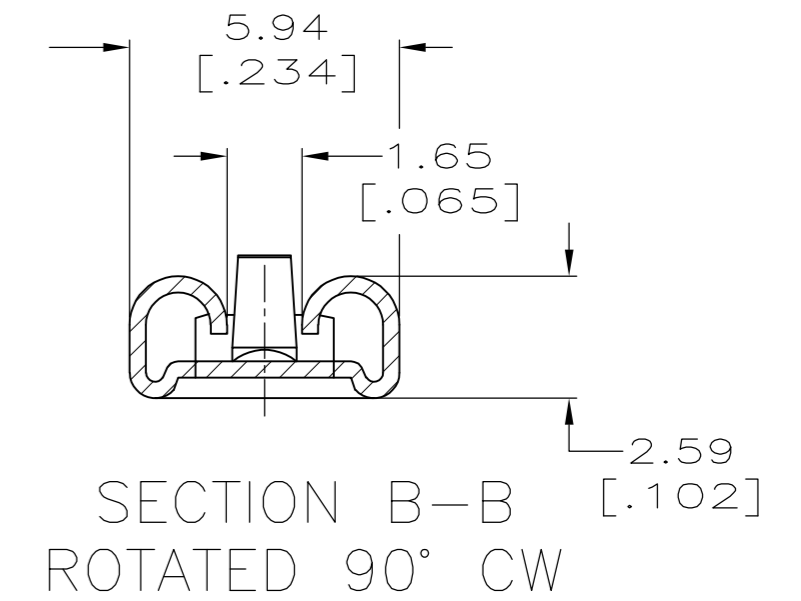
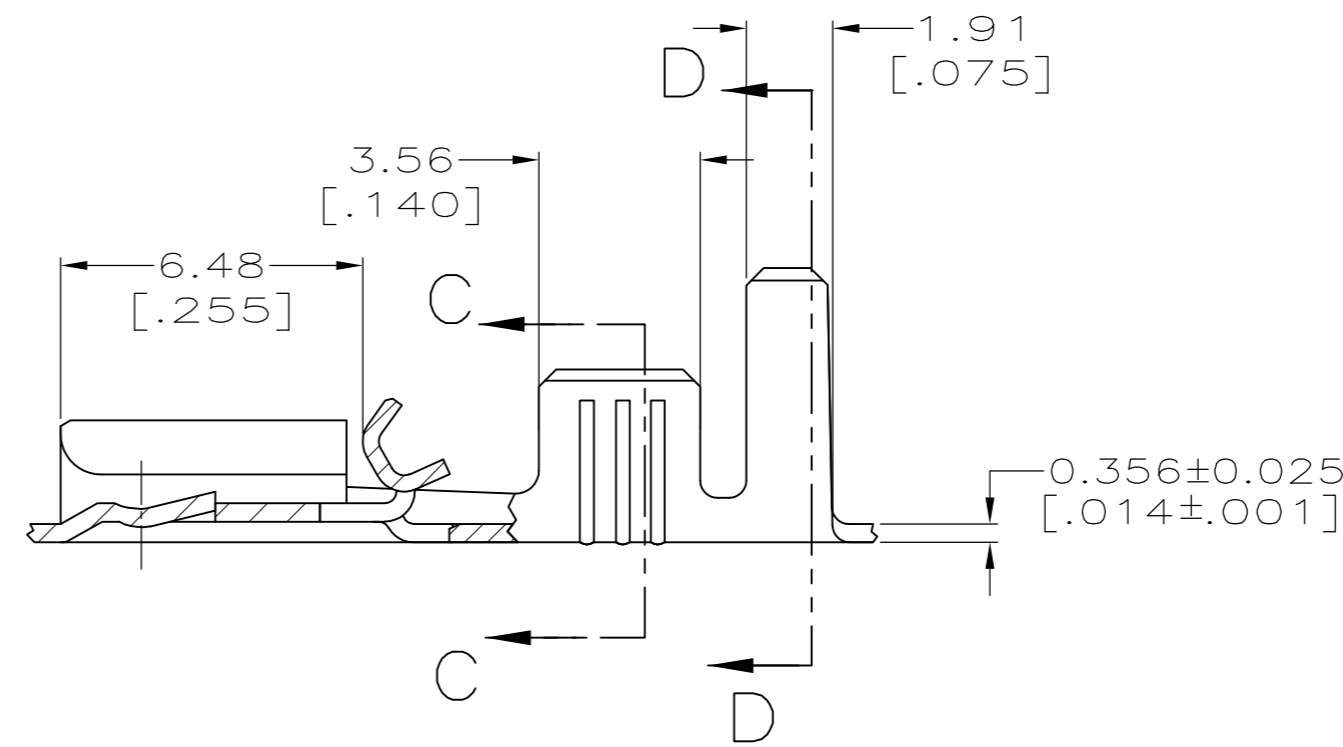
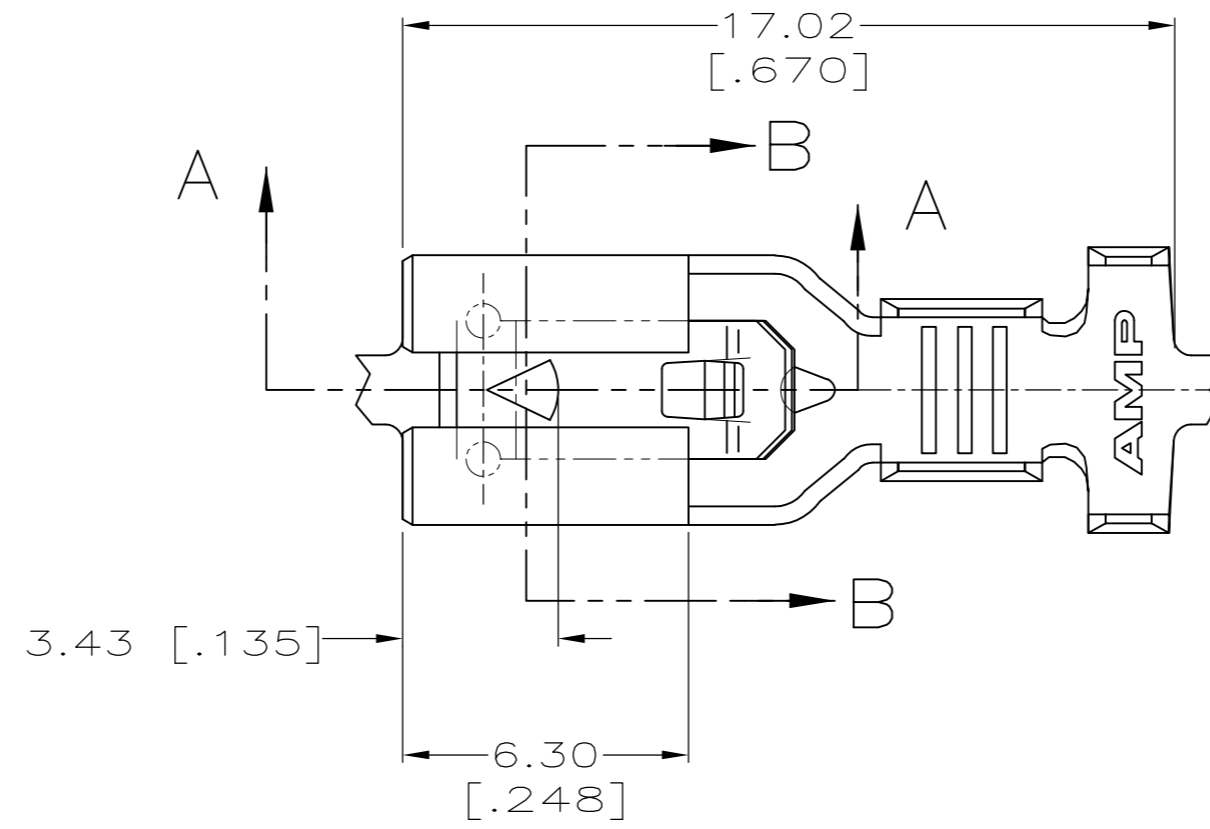
THIS DRAWING IS UNPUBLISHED. RELEASED FOR PUBLICATION  
 © COPYRIGHT - By - ALL RIGHTS RESERVED.

LOC		DIST		REVISIONS			
P	LTR	DESCRIPTION		DATE	DWN	APVD	
AF	50	D		REVISED PER ECR-13-011489	14DEC2013	KH	PD

SUGGESTED MATING TAB



- MATL: #2 HARD BRASS OR NICKEL PLATE STEEL.
  - NO BURRS PERMISSIBLE AT HOLE.
  - TIN PLATING IS REQUIRED ON BRASS WHEN TERMINAL TEMPERATURE IS OVER 225° F.
  - MUST BE FLAT WITHIN 0.076[.003] OVER THIS LENGTH.
  - HOLE MUST BE SYMMETRICAL ABOUT TAB & WITHIN 0.076[.003].
- \* TO BE USED ONLY WHEN SHOULDER IS ELIMINATED.



0.002032 [.000080] MIN TIN	1217096-2
-	1217096-1
FINISH	PART NO.

THIS DRAWING IS A CONTROLLED DOCUMENT.		DWN	JR RUTH	6/26/98
DIMENSIONS: mm [INCHES]		CHK	MS FEHER	6/26/98
TOLERANCES UNLESS OTHERWISE SPECIFIED:		APVD	E HOWARD	6/26/98
0 PLC	± -	PRODUCT SPEC	NAME	
1 PLC	± -	APPLICATION SPEC	RECEPTACLE, POSITIVE-LOCK, MARK III, 4.75 [.187] SERIES	
2 PLC	± 0.25 [.010]	WEIGHT	-	SIZE
3 PLC	± -	CUSTOMER DRAWING	-	CAGE CODE
4 PLC	± -	SCALE	6:1	DRAWING NO
ANGLES	± -	SHEET	1 of 1	RESTRICTED TO
FINISH	SEE TABLE	REV	D	