

# Customer Information Sheet

DRAWING No.: M22-220XXXX

SHEET 2 OF 2

IF IN DOUBT - ASK

©

NOT TO SCALE

THIRD ANGLE PROJECTION

ALL DIMENSIONS IN mm

**SPECIFICATIONS:**

**MATERIAL:**

MOULDING = NYLON 9T, ULV94V-0  
CONTACTS = BRASS

**FINISH:**

45 = GOLD  
46 = 100% TIN

**ELECTRICAL:**

CURRENT RATING = 2A  
VOLTAGE RATING = 100V AC/DC  
DIELECTRIC WITHSTANDING = 800V AC MIN  
INSULATION RESISTANCE = 1,000MΩ MIN

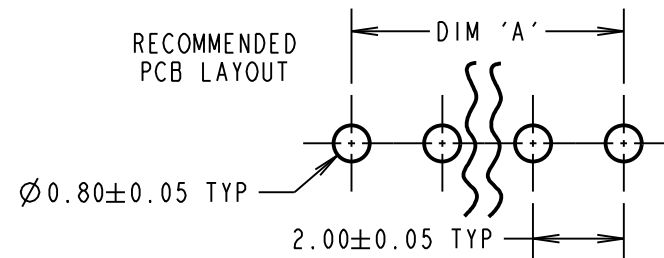
**ENVIRONMENTAL:**

TEMPRETURE RANGE = -25°C TO +85°C  
FOR COMPLETE SPECIFICATION, SEE COMPONENT SPECIFICATION CO18XX (LATEST ISSUE)

**NOTES:**

1. ALL TOLERANCES ARE ±0.20 UNLESS SOTHERWISE STATED.

RECOMMENDED PCB LAYOUT



**Active products:**

M22-2200246  
M22-2200445  
M22-2200446  
M22-2200546

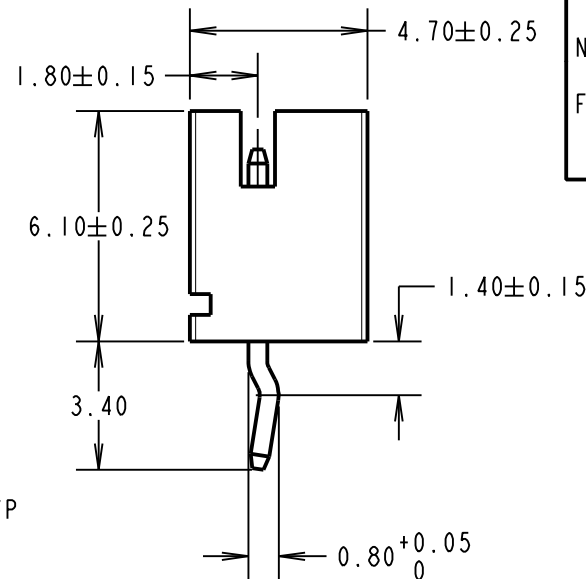
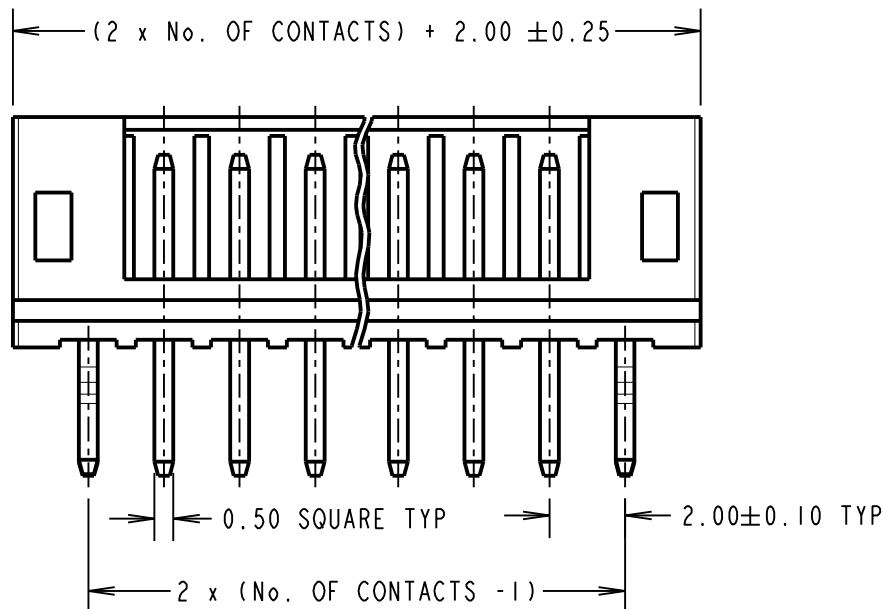
**OBSOLETE**

All other size/finish combinations not listed

ORDER CODE:

**M22-220XXXX**

No. OF CONTACTS: 02 TO 08  
FINISH: 45 = GOLD  
46 = 100% TIN



MSP	12	15.06.15	12803
NAME	ISS.	DATE	C/NOTE
APPROVED: M.PERREN			
CHECKED: S.BENNETT			
DRAWN: M.PERREN			
CUSTOMER REF.:			
ASSEMBLY DRG:			

**HARWIN**

www.harwin.com  
technical@harwin.com

THIS DRAWING AND ANY INFORMATION OR DESCRIPTIVE MATTER SET OUT HEREON ARE CONFIDENTIAL AND COPYRIGHT PROPERTY OF THE HARWIN GROUP AND MUST NOT BE DISCLOSED, LOANED, COPIED OR USED FOR MANUFACTURING, TENDERING OR FOR ANY OTHER PURPOSE WITHOUT THEIR WRITTEN PERMISSION.

**TOLERANCES**  
X = ±1mm  
X.X = ±0.50mm  
X.XX = ±0.10mm  
X.XXX = ±0.01mm  
ANGLES = ±5°  
UNLESS STATED

**MATERIAL:** SEE ABOVE  
**FINISH:** SEE ABOVE  
**S/AREA:** mm<sup>2</sup>

**TITLE:** 2mm VERTICAL SHROUDED PIN HEADER  
**DRAWING NUMBER:** M22-220XXXX  
SHT 2 OF 2