

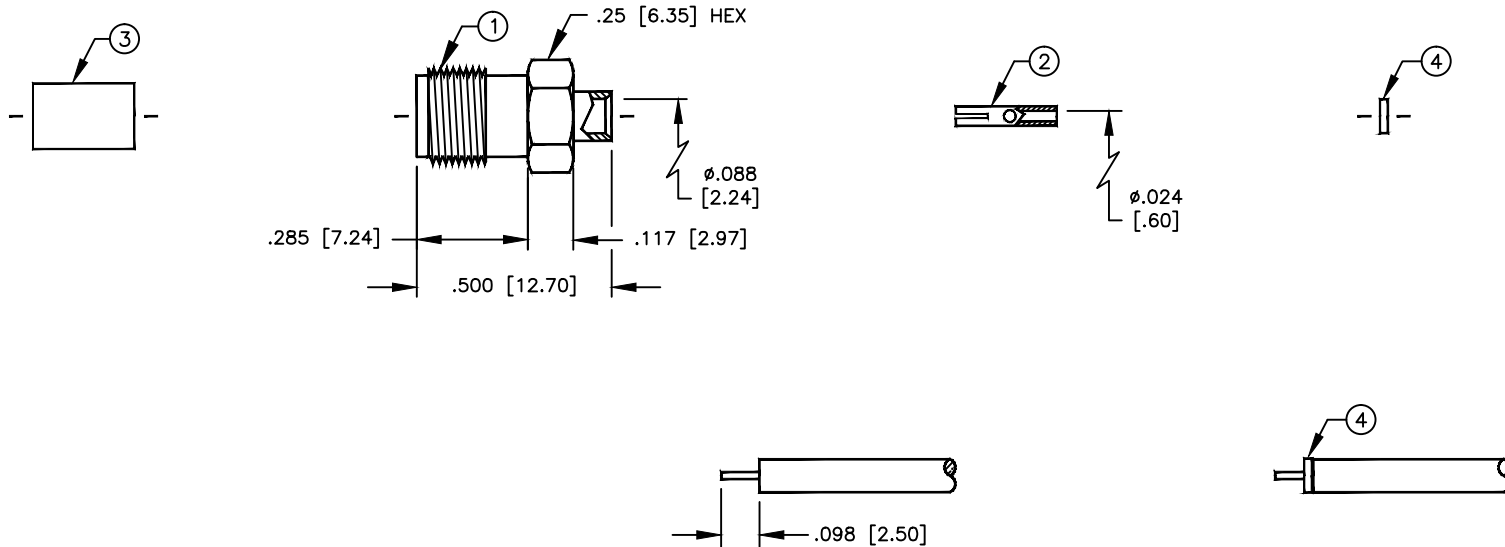
SPECIFICATION CONTROL DRAWING

THIS DRAWING CONTAINS INFORMATION PROPRIETARY TO RF INDUSTRIES, LTD. ANY UNAUTHORIZED USE OF THIS DRAWING IS EXPRESSLY PROHIBITED. ANY VIOLATION IS PUNISHABLE UNDER U.S. COPYRIGHT LAWS.

REV	DESCRIPTION	DWN	DATE	APPROVED
A	ENGINEERING RELEASE	KMM	4/9/99	R. RICE

ALL DIMENSIONS ARE REFERENCE ONLY

008974



SUGGESTED STRIPPING INSTRUCTIONS
PIN TO BE SOLDERED

PLACE SMALL DIELECTRIC ONTO CABLE
BEFORE SOLDERING

SPECIFICATIONS:

IMPEDANCE: 50 OHMS
 WORKING VOLTAGE: 500V PEAK @ SEA LEVEL
 FREQUENCY RANGE: 0-18 GHz
 INSERTION LOSS: -.7 dB @ 18 GHz
 VSWR MAX: 1.1:1 @ 18 GHz
 FOR .085 SEMI RIGID, RG-405/U & BELDEN 1671A CABLE

DIMENSIONS ARE IN INCHES
AND [MILLIMETERS]

UNLESS OTHERWISE NOTED
TOLERANCES ARE:

DECIMALS	DIAMETER
.xxx±.003 [.08]	.xxx±.001 [.03]
.xx±.005 [.13]	.xx±.003 [.08]

ANGLES: ±1°

DRAWN
K. MAXWELL 4/9/99

CHECKED

ORJ DRAWN
K. MAXWELL 4/9/99

APPROVALS DATE

RFconnectors

DIVISION OF RF INDUSTRIES, LTD.

7610 MIRAMAR RD
 SAN DIEGO, CA 92126
 (619)549-6340
 (619)549-6345 FAX

RSA-3555-SR1

SMA FEMALE SEMI RIGID

ITEM	DESCRIPTION	QTY	MATERIAL	FINISH
4	DIELECTRIC	1	PTFE	NONE
3	DIELECTRIC	1	PTFE	NONE
2	CONTACT	1	BeCu	GOLD
1	BODY	1	BRASS	NICKEL

SIZE	CABLE GROUP	DWG NO.	REV
A	SR1	9159	A
SCALE: 2:1		CAD FILE 13ARC B	SHEET 1 OF 1