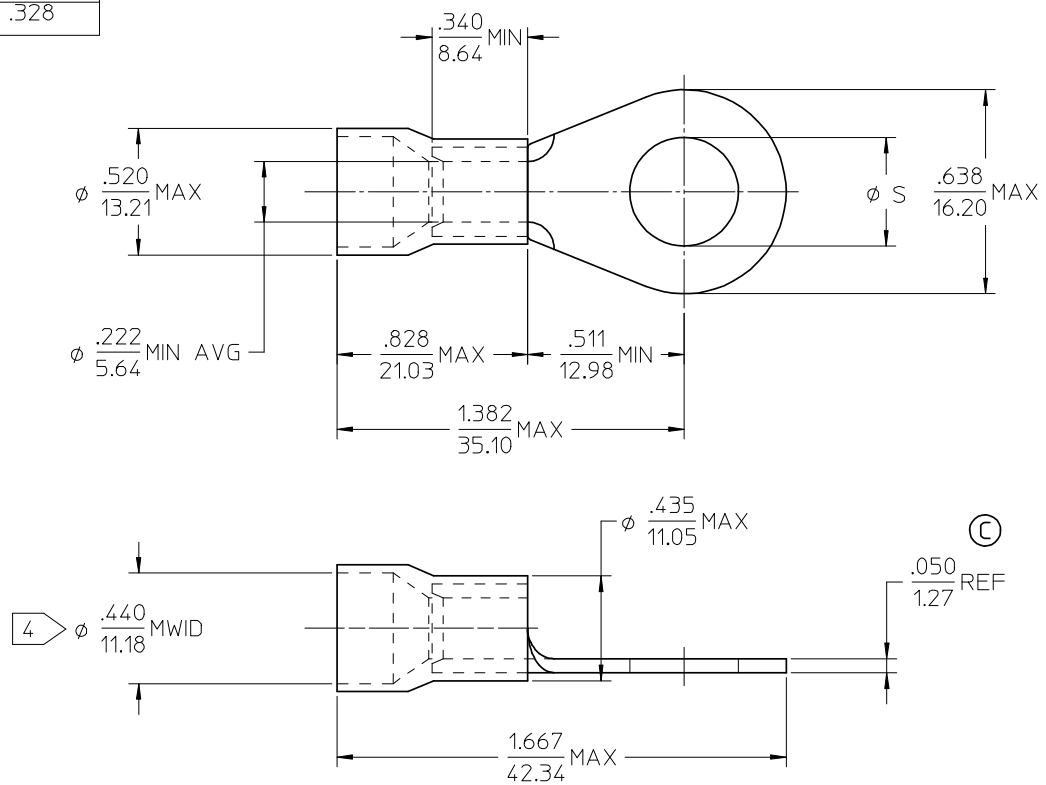


MATERIAL NO.	ENG. NO.	STUD SIZE	∅S ±.005
190710185	E-657-08X	8	.173
190710188	E-657-10X	10	.198
190710190	E-657-14X	1/4	.256
190710193	E-657-38X	3/8	.390
190710196	E-657-56X	5/16	.328



- NOTE(S):
1. TERMINAL MATERIAL: COPPER ALLOY.
 2. TERMINAL FINISH: ELECTRO TIN PLATE.
 3. INSULATION MATERIAL: PVC, COLOR CODED BLUE.
 - 4 MWID = MAXIMUM WIRE INSULATION DIAMETER.
 5. ALL COMPONENTS ARE ROHS COMPLIANT.

REDWN & RDC MATL THKNS EC NO: ETC2007-0158 DRAWN/EHILE 2006/10/20 CHKD: JMACNEIL 2006/10/20 APPR: JMACNEIL 2006/10/20	QUALITY SYMBOLS	GENERAL TOLERANCES (UNLESS SPECIFIED)	DIMENSION STYLE	SCALE	DESIGN UNITS	THIRD ANGLE PROJECTION
	▽=0	mm INCH	IN/MM	4:1	INCH	
	∇=0	4 PLACES ±--- ±---	DRAWN BY DATE	TITLE		
		3 PLACES ±--- ±---	EHILE 2006/10/10	RING TONGUE TERMINAL INSULKRIMP, 657 SERIES 6 AWG		
	2 PLACES ±--- ±---	1 PLACE ±--- ±---	CHECKED BY DATE	MOLEX INCORPORATED		
	ANGULAR ±---°		JMACNEIL 2006/10/10	DOCUMENT NO. SD-19071-013		
			APPROVED BY DATE	SHEET NO. 1 OF 1		
			JMACNEIL 2006/10/10	THIS DRAWING CONTAINS INFORMATION THAT IS PROPRIETARY TO MOLEX INCORPORATED AND SHOULD NOT BE USED WITHOUT WRITTEN PERMISSION		
		DRAFT WHERE APPLICABLE MUST REMAIN WITHIN DIMENSIONS	MATERIAL NO.			
			SEE CHART			
			SIZE B			