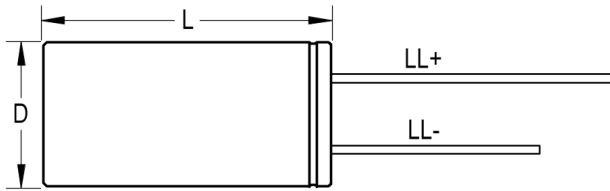
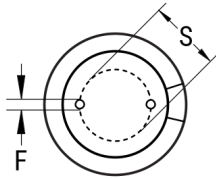


SIDE VIEW



TERMINAL END VIEW



Click [here](#) for the 3D model.

Dimensions	
D	16mm +/-0.5mm
L	20mm +2mm
S	7.5mm +/-0.5mm
LL Negative	15mm MIN
LL Positive	20mm MIN
F	0.8mm NOM

Packaging Specifications	
Packaging	Bulk, Bag
Packaging Quantity	1000

General Information

Series	ESG
Dielectric	Aluminum Electrolytic
Description	Long Life Single Ended Aluminum Electrolytic
Features	Long Life
RoHS	Yes
Lead	Wire Leads
AEC-Q200	No

Specifications

Capacitance	47 μ F
Capacitance Tolerance	20%
Voltage DC	250 VDC, 300 VDC (Surge)
Temperature Range	-40/+105°C
Rated Temperature	105°C
Life	5000 Hrs
Dissipation Factor	15% 120Hz 20C
Ripple Current	275 mAmps (120Hz 105C)
Leakage Current	715 μ A (2min 20°C)
Impedance Ratio at -25C	3
Impedance Ratio at -40C	6