

Design Change Notification

December 29th, 2021

To: Sanyo Denki America Cooling Distributors

Product: BLDC FAN MOTOR _____

Model: San Ace 80 (9GA) 80mm sq. x 20mm thick
(Please refer Attached Sheet for a complete part number list.)SANYO DENKI CO., LTD.
Design Dept., Cooling Systems Div.

Approved	Checked	Designed
		

SANYO DENKI America, Inc.
Cooling Systems Division

No.	Contents	Before Change	After Change	Description
1	Motor drive IC, electronic parts, Motor Windings and PWB	Use motor drive IC manufactured by ON-Semiconductor.	Use motor drive IC manufactured by New-Japan-Radio.	Change to the motor drive IC due to discontinuation of production by the semiconductor manufacturer. Also change to some electric parts except IC, Motor windings and PWB due to the change of the motor drive IC.
2	Specifications	See the Attached Sheet.	See the Attached Sheet.	
3	Implementation Date			Implementation Date: From December, 2022 production (Estimated). Please note that the changeover schedule to new IC may change according to the number of products in the inventory.

No. A0052615 - Attached Sheet 1

[MODEL LIST]

San Ace 80 (9GA) – 80mm x 20mm thick

MODEL	Change contents
9GA0812G6001	Attached Sheet 2
9GA0812G6002	
9GA0812G6003	
9GA0812G6004	
9GA0812G6005	
9GA0812M6001	
9GA0812M6002	
9GA0812M6003	
9GA0812M6004	
9GA0824G6001	
9GA0824G6002	
9GA0824G6003	
9GA0824G6004	
9GA0824G6005	
9GA0824G6006	
9GA0824M6001	
9GA0824M6002	
9GA0824M6003	
9GA0812P6G001	Attached Sheet 3
9GA0812P6G001-C	
9GA0812P6G004	
9GA0812P6G005	
9GA0812P6G006	
9GA0812P6G007	
9GA0812P6M001	
9GA0812P6M003	
9GA0812P6M004	
9GA0824P6G001	
9GA0824P6G004	
9GA0824P6G005	
9GA0824P6G007	
9GA0824P6GD001	
9GA0824P6M001	

No. A0052615 - Attached Sheet 2

[MODEL]

9GA0812G6001, 9GA0812G6002, 9GA0812G6003, 9GA0812G6004, 9GA0812G6005,
 9GA0812M6001, 9GA0812M6002, 9GA0812M6003, 9GA0812M6004,
 9GA0824G6001, 9GA0824G6002, 9GA0824G6003, 9GA0824G6004, 9GA0824G6005, 9GA0824G6006,
 9GA0824M6001, 9GA0824M6002, 9GA0824M6003

[Contents of change]

	Before Change	After Change
Motor drive IC	LV8860 By On-semiconductor	NJW4320 By New-Japan-Radio
Operating voltage	No change	
Electrical current	No change	
Speed	No change	
Operating temp.	No change	
Sound pressure level	No change	
Control terminal	Non-applicable	
Air flow – static pressure character	No change	
PWM duty cycle - Speed characteristic	Non-applicable	
Sensor spec.	No change	

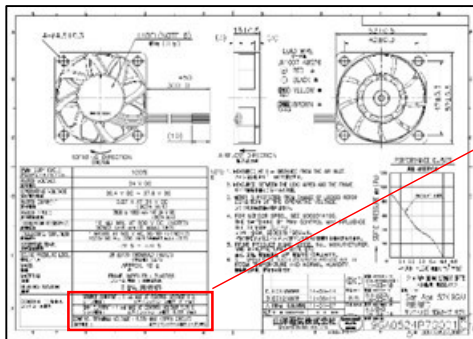
No. A0052615 - Attached Sheet 3

[MODEL]

9GA0812P6G001, 9GA0812P6G001-C, 9GA0812P6G004, 9GA0812P6G005, 9GA0812P6G006,
 9GA0812P6G007,
 9GA0812P6M001, 9GA0812P6M003, 9GA0812P6M004,
 9GA0824P6G001, 9GA0824P6G004, 9GA0824P6G005, 9GA0824P6G007, 9GA0824P6GD001,
 9GA0824P6M001

[Contents of change]

	Before Change	After Change
Motor drive IC	LV8860 By On-semiconductor	NJW4320 By New-Japan-Radio
Operating voltage	No change	
Electrical current	No change	
Speed	No change	
Operating temp.	No change	
Sound pressure level	No change	
Control terminal	Source current: 1 mA MAX. Refer to below drawing	Source current: 2 mA MAX. Refer to below drawing
Air flow – static pressure character	No change	
PWM duty cycle - Speed characteristic	No change	
Sensor spec.	No change	



Before Change

SOURCE CURRENT : 1 mA MAX. AT CONTROL VOLTAGE 0 V ソース電流 : 以下 (コントロール電圧 0 V時)
SINK CURRENT : 1 mA MAX. AT CONTROL VOLTAGE 5.25 V シンク電流 : 以下 (コントロール電圧 5.25 V時)
CONTROL TERMINAL VOLTAGE : 5.25 V MAX. (OPEN CIRCUIT) 端子電圧 : 以下 (コントロール端子オープン時)

After Change

SOURCE CURRENT : 2 mA MAX. AT CONTROL VOLTAGE 0 V ソース電流 : 以下 (コントロール電圧 0 V時)
SINK CURRENT : 1 mA MAX. AT CONTROL VOLTAGE 5.25 V シンク電流 : 以下 (コントロール電圧 5.25 V時)
CONTROL TERMINAL VOLTAGE : 5.25 V MAX. (OPEN CIRCUIT) 端子電圧 : 以下 (コントロール端子オープン時)