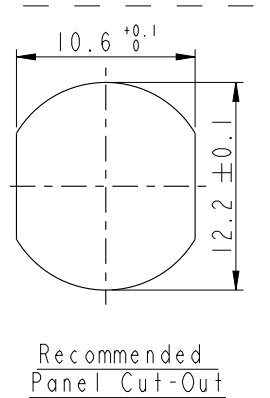
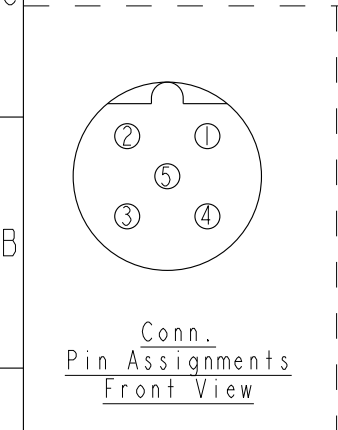
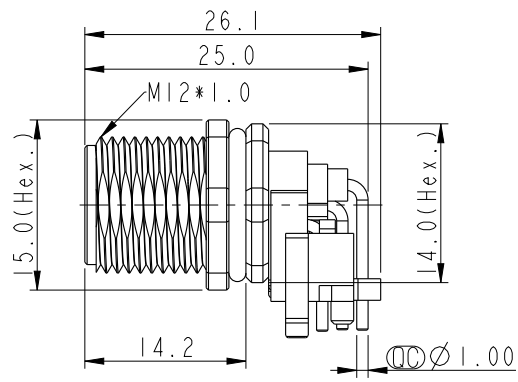
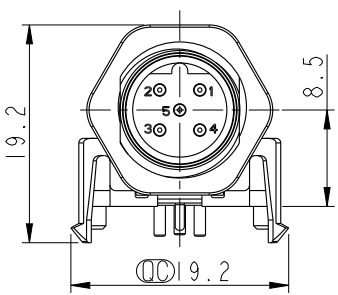
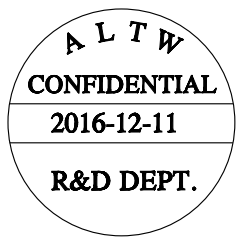
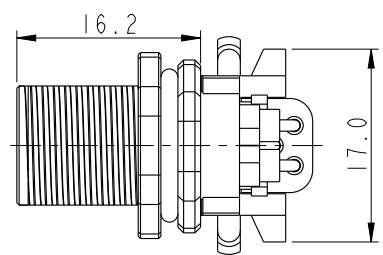
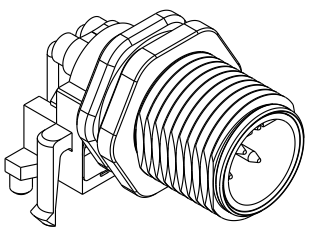
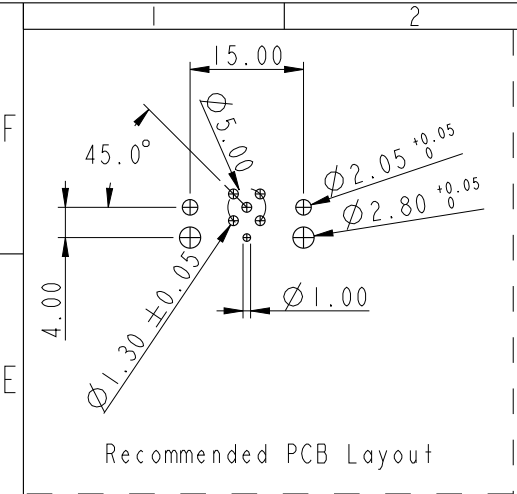
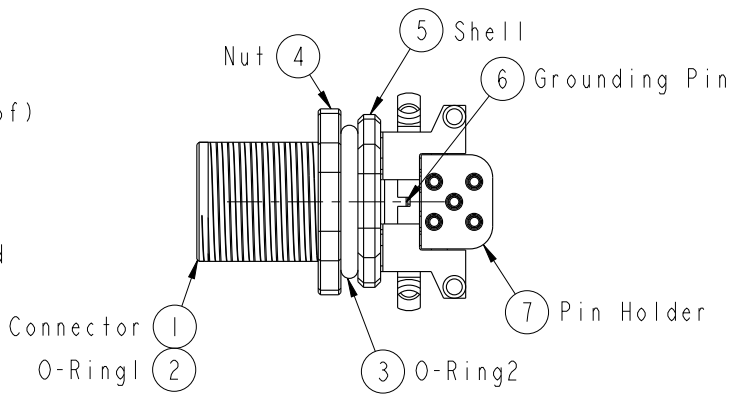


THIS DOCUMENT IS SUBJECT TO CHANGE WITHOUT NOTICE. IT IS CONFIDENTIAL AND A PROPERTY OF Amphenol LTW. DISCLOSURE TO THIRD PARTY HAS TO BE AUTHORIZED BY Amphenol LTW.

REV.	ECN NO.	DATE	SIGN	DESCRIPTION



- Note:
- * \varnothing Important Dimension To Check.
 - * Waterproof Rating: IP67(Mated Waterproof)
 - * Connector: PBT+PC, Black
 - * Male Pins: Copper Alloy, Gold Plated
 - * Shell: Zinc Alloy, Nickel Plated
 - * Nut: Zinc Alloy, Nickel Plated
 - * Grounding Pin: Copper Alloy, Tin Plated
 - * O-Ring1: Silicone, Black
 - * O-Ring2: Silicone, Gray
 - * Pin Holder: PBT+PC, Black
 - * For Panel Thickness Max. 3.0mm
 - * For PCB Thickness Max. 1.5mm



UNIT:mm		TITLE M12,90° Panel,w/ Grounding Pin 5PIN MCONN MPIN (Mated Waterproof)	
TOLERANCE		SCALE 3:2	SIZE A4
.X ±0.25		SHEET 1	OF 1
.XX ±0.1		REV. A	WC-REV. A.1
.XXX ±0.05		\varnothing : Inspection item	
ANGLES ±1°			

Amphenol LTW
安費諾亮泰企業股份有限公司

ITEM NO MSBS-05PMMR-SF7003	DRAWN BY Yulong_wang	DATE 2016-12-11
DWG NO MSBS-05PMMR-SF7003	CHECKED BY Jinhai	DATE 2016-12-11
CUSTOMER ALTW	APPROVED BY Jerry	DATE 2016-12-11