

FM4 S6E2H-SERIES STARTER KIT

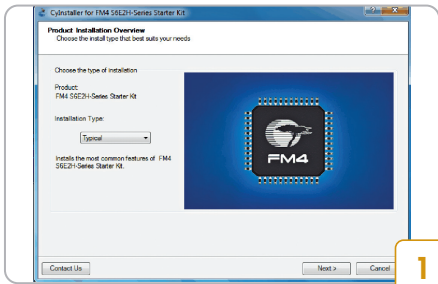


Kit Contents:

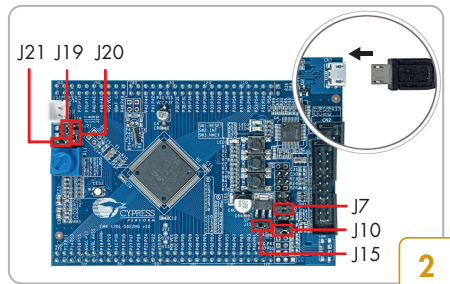
- 1 FM4 S6E2H-Series Starter board
- 2 USB Standard-A to Micro-B cable
- 3 Quick Start Guide (this document)



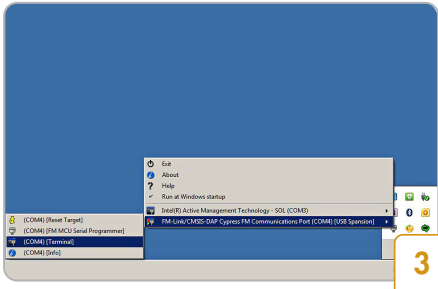
www.cypress.com/FM4-120L-S6E2HG



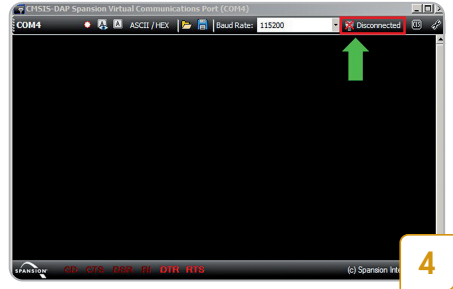
- Download and install the *FM4 S6E2H-Series Starter Kit installer FM4S6E2HGKitSetup.exe* from www.cypress.com/FM4-120L-S6E2HG



- Ensure jumpers J7, J10 and J19 are loaded
- Ensure jumpers J15, J20 are loaded on pin1 and pin2
- Ensure jumper J21 is loaded on pin2 and pin3
- Connect the board to a PC via CN3 using the provided USB cable



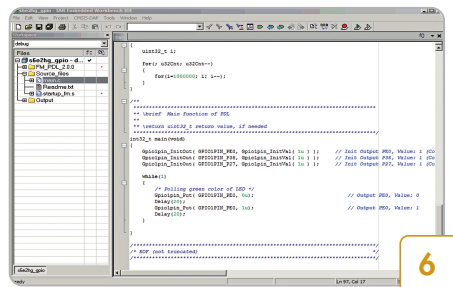
- Launch the **Serial Port Viewer Tool** from Start > All Programs > Cypress > Serial Port Viewer Tool
- Click on the Serial Port Viewer icon in the notification area of the taskbar and select **FM-Link/CMSIS-DAP Cypress FM Communications Port**



- Configure the baud rate as **115200**
- Click the **Disconnected** button to connect
- Press **Enter** on your PC keyboard to run the board test demo

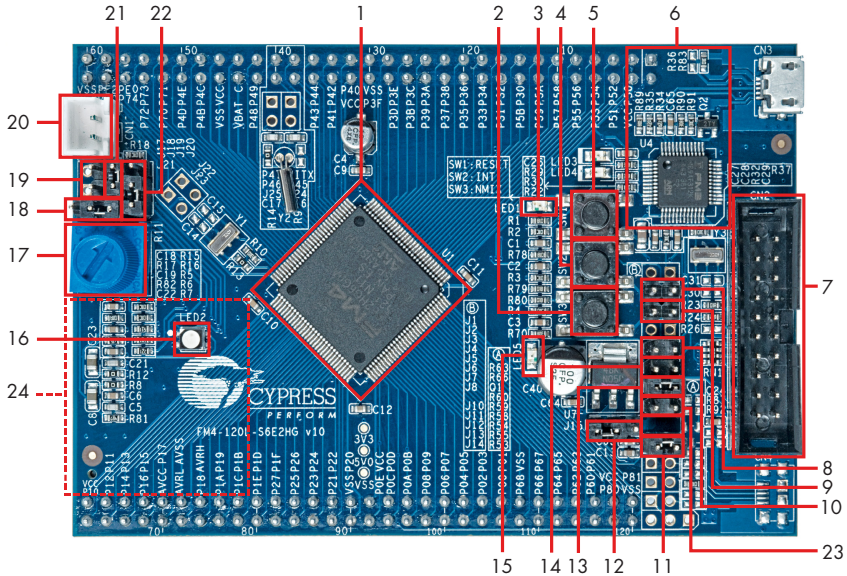


- Key in **1** and press **Enter** on your keyboard. The RGB LED will blink with Red color. For more information on the test procedures, refer to the kit user guide



- Use IAR Embedded Workbench or Keil uVision IDE to develop code examples on this kit

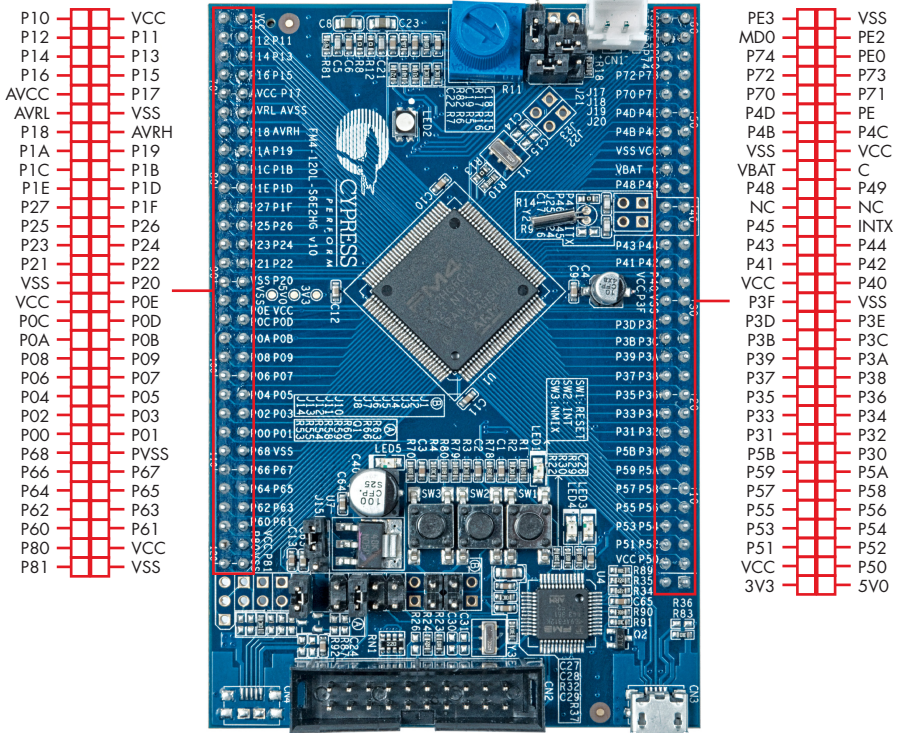
FM4 S6E2H-Series Starter Board Details



- | | |
|--|---|
| 1. Cypress FM4 MCU S6E2HG6A0J | 13. Select power from CMSIS-DAP (J7) |
| 2. Non-maskable interrupt (NMIX) Switch (SW3) | 14. Select power from peripheral (J6) |
| 3. Reset LED (LED1) | 15. Power supply LED (LED5) |
| 4. User button (SW2) | 16. RGB LED (LED2) |
| 5. Reset button (SW1) | 17. Potentiometer (R11) |
| 6. MB9AF312K Programmer and Debugger (CMSIS-DAP) | 18. Jumper for Pin56 multifunction select (J21) |
| 7. 20-pin JTAG interface (CN2) | 19. Programming mode jumper of S6E2HG (J18) |
| 8. VBUS Selection Jumper for CMSIS-DAP (J2) | 20. Battery connector (CN1) |
| 9. Programmer and Debugger Jumper (J3) | 21. Jumper to connect S6E2HG SINO (J19) |
| 10. Programming mode jumper of MB9AF312K (J5) | 22. Jumper to connect S6E2HG SOTO (J20) |
| 11. Jumper to connect SW3 (J10) | 23. Select Power by 20-pin JTAG interface (J8) |
| 12. On-board voltage select (J15) | |
| 24. SD card slot (CN5) (bottom side) | |

FM4 S6E2H-SERIES STARTER KIT

FM4 S6E2H-Series Starter Board Details



For the latest information about this kit, visit www.cypress.com/FM4-120L-S6E2HG