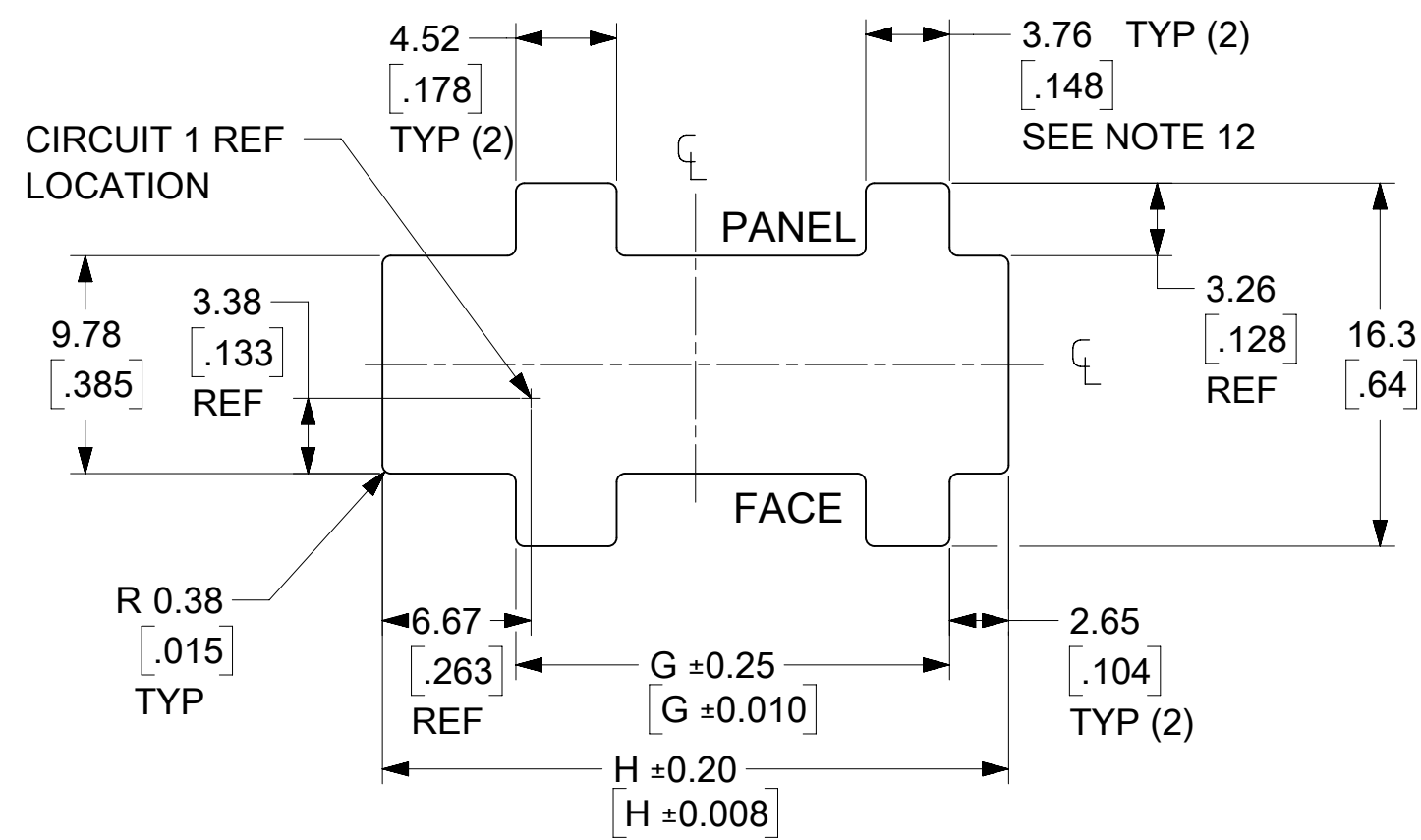


| CIRCUIT SIZE | MATERIAL NUMBER | DIM "A"             | DIM "B"               |
|--------------|-----------------|---------------------|-----------------------|
| 4            | 44133-0408      | $\frac{24.6}{.97}$  | $\frac{3.00}{.118}$   |
| 6            | 44133-0608      | $\frac{27.7}{1.09}$ | $\frac{6.00}{.236}$   |
| 8            | 44133-0808      | $\frac{30.7}{1.21}$ | $\frac{9.00}{.354}$   |
| 10           | 44133-1008      | $\frac{33.8}{1.33}$ | $\frac{12.00}{.472}$  |
| 12           | 44133-1208      | $\frac{36.8}{1.45}$ | $\frac{15.00}{.591}$  |
| 14           | 44133-1408      | $\frac{39.8}{1.57}$ | $\frac{18.00}{.709}$  |
| 16           | 44133-1608      | $\frac{42.8}{1.69}$ | $\frac{21.00}{.827}$  |
| 18           | 44133-1808      | $\frac{45.8}{1.80}$ | $\frac{24.00}{.945}$  |
| 20           |                 | $\frac{48.8}{1.92}$ | $\frac{27.00}{1.063}$ |
| 22           |                 | $\frac{51.8}{2.04}$ | $\frac{30.00}{1.181}$ |
| 24           |                 | $\frac{54.8}{2.16}$ | $\frac{33.00}{1.299}$ |

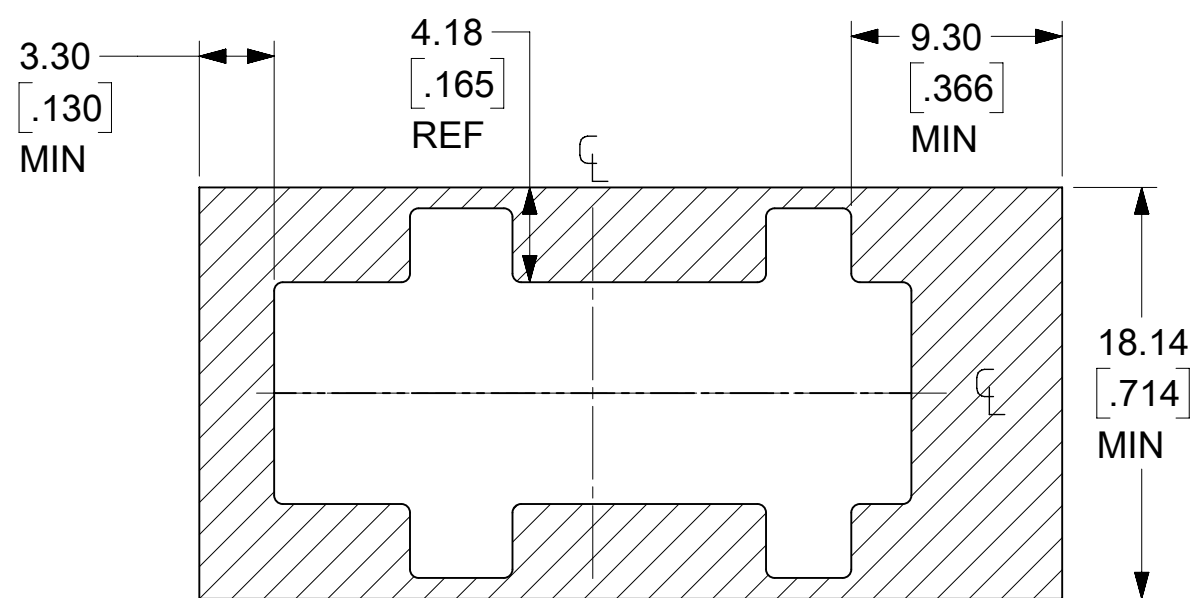
- NOTES:
1. MATERIAL: UNFILLED NYLON, UL94V-0, COLOR: BLACK
  2. FINISH: N/A
  3. PRODUCT SPECIFICATION: PS-44300-001
  4. PACKAGING SPECIFICATION: TRAY PACKED PER PK-44133-002
  5. THIS RECEPTACLE MATES WITH MOLEX BMI PLUG 44300, MOLEX BMI VERTICAL PCB HEADER 44432, MOLEX BMI RIGHT ANGLE PCB HEADER 44428, & MOLEX BMI CPI VERTICAL PCB HEADER 45280.
  6. THIS RECEPTACLE TO BE USED WITH MOLEX FEMALE CRIMP TERMINALS ONLY (SERIES 43030, 45773, OR 46235). SEE SECTION "A"- "A" FOR TERMINAL ORIENTATION IN HOUSING.
  7. THIS RECEPTACLE IS DESIGNED FOR USE WITH 1.52/.060 MAX. TO 1.27/.050 MINIMUM THICK PANELS.
  8. DIMENSIONS GIVEN ACROSS CENTERLINES ARE SYMMETRICAL ABOUT THOSE CENTERLINES WITHIN THE TOTAL TOLERANCE.
  9. WHEN MATING WITH 44300 SERIES, THE PANEL CUT-OUT CENTERLINES OF DIM "H" AND 9.78/.385 MUST ALIGN WITH POINT "M" DEFINED BY MOLEX DRAWING SD-44300-001.
  10. MOLEX RECOMMENDS THE USE OF MICRO-FIT TEST PLUG (SERIES 44242) WHENEVER CONTINUITY TESTING IS PERFORMED. TEST PLUGS MUST NOT BE USED TO MAKE OR BREAK UNDER LOAD. MOLEX DOES NOT RECOMMEND USING STANDARD MATING COMPONENTS (SERIES 44428, 44432, 44300 OR 45280) FOR HARNESS TESTING PURPOSES.
  11. THIS PART CONFORMS TO CLASS 'B' REQUIREMENTS OF COSMETIC SPECIFICATION PS-45499-002. HOUSINGS MAY EXHIBIT A SURFACE IMPERFECTION KNOW AS "SINK MARKS" UP TO (0.60)/.024 MAX. THIS IS A COSMETIC DEFECT AND DOES NOT AFFECT FUNCTION OF THE CONNECTOR.
  12. THE WIDTH OF THE NARROW SLOTS SHOULD BE 2.90-3.28/.114-.129 (MIN-MAX) IF KEYING OF THE CONNECTOR TO THE CUT-OUT IS DESIRED.

|                    |   |         |                                    |  |
|--------------------|---|---------|------------------------------------|--|
| FUNCTIONAL SYMBOLS | THIS DRAWING CONTAINS INFORMATION THAT IS PROPRIETARY TO MOLEX ELECTRONIC TECHNOLOGIES, LLC AND SHOULD NOT BE USED WITHOUT WRITTEN PERMISSION |         | CURRENT REV DESC: ADD KEEPOUT AREA |  |
|                    | DIMENSION UNITS   | SCALE   |                                    |  |
| $\frac{F}{A} = 0$  | MM/INCH   | NTS     |                                    |  |
| $\frac{F}{C} = 0$  | GENERAL TOLERANCES (UNLESS SPECIFIED)   |         |                                    |  |
| $\frac{F}{P} = 0$  |   | MM      | INCH                               |  |
| DIVISIONAL SYMBOLS | 4 PLACES  | ±       | ±                                  |  |
|                    | 3 PLACES  | ±       | ± 0.01                             |  |
|                    | 2 PLACES  | ± 0.25  | ± 0.014                            |  |
|                    | 1 PLACE   | ± 0.35  | ±                                  |  |
|                    | 0 PLACES  | ±       | ±                                  |  |
|                    | ANGULAR TOL   | ± 0.5 ° |                                    |  |
|                    | DRAFT WHERE APPLICABLE MUST REMAIN WITHIN DIMENSIONS  |         |                                    |  |
|                    | THIRD ANGLE PROJECTION  | DRAWING | SERIES                             |  |
|                    |   | C-SIZE  | 44133                              |  |

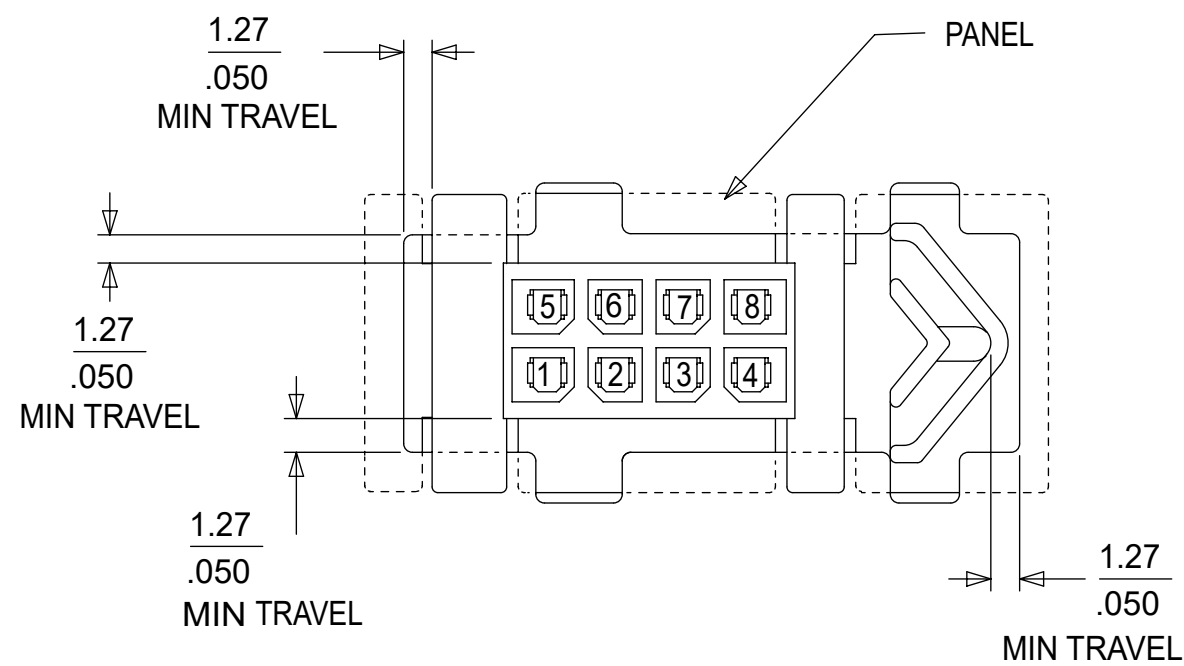
|                   |            |                          |
|-------------------|------------|--------------------------|
| EC NO: 660931     | 2021/04/09 |                          |
| DRWN: MKIPPER     | 2021/07/16 |                          |
| CHK'D: JEHRISMAN  | 2021/07/19 |                          |
| APPR: FSMITH      | 2021/07/19 | PRODUCT CUSTOMER DRAWING |
| INITIAL REVISION: |            | DOCUMENT NUMBER          |
| DRWN: GAVERILL    | 2008/08/11 | SD-44133-003             |
| APPR: FSMITH      | 2008/08/22 | DOC TYPE                 |
|                   |            | PSD                      |
|                   |            | DOC PART                 |
|                   |            | 001                      |
|                   |            | REVISION                 |
|                   |            | B5                       |
|                   |            | MATERIAL NUMBER          |
|                   |            | CUSTOMER                 |
|                   |            | GENERAL MARKET           |
|                   |            | SHEET NUMBER             |
|                   |            | 1 OF 2                   |



**RECOMMENDED PANEL CUTOUT**  
(SEE NOTES 7, 9, AND 12)

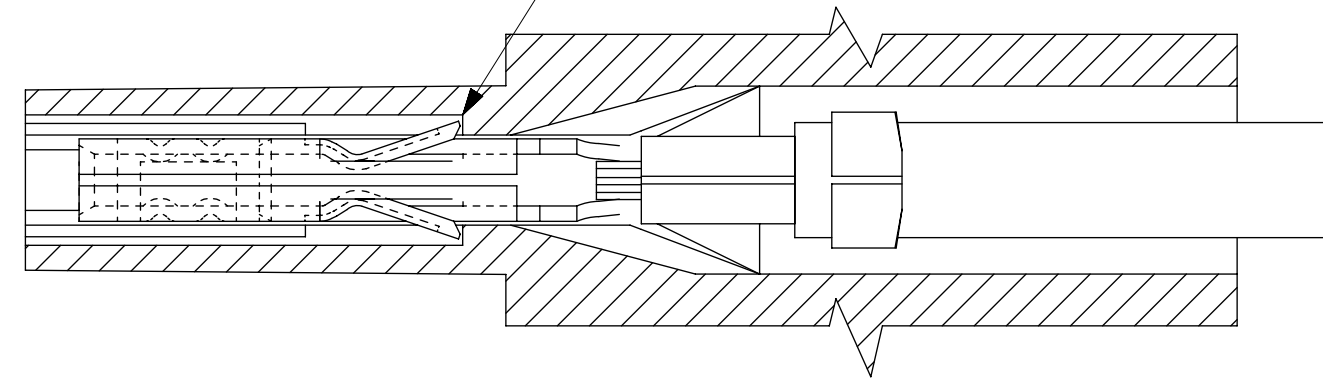


**KEEPOUT AREA**

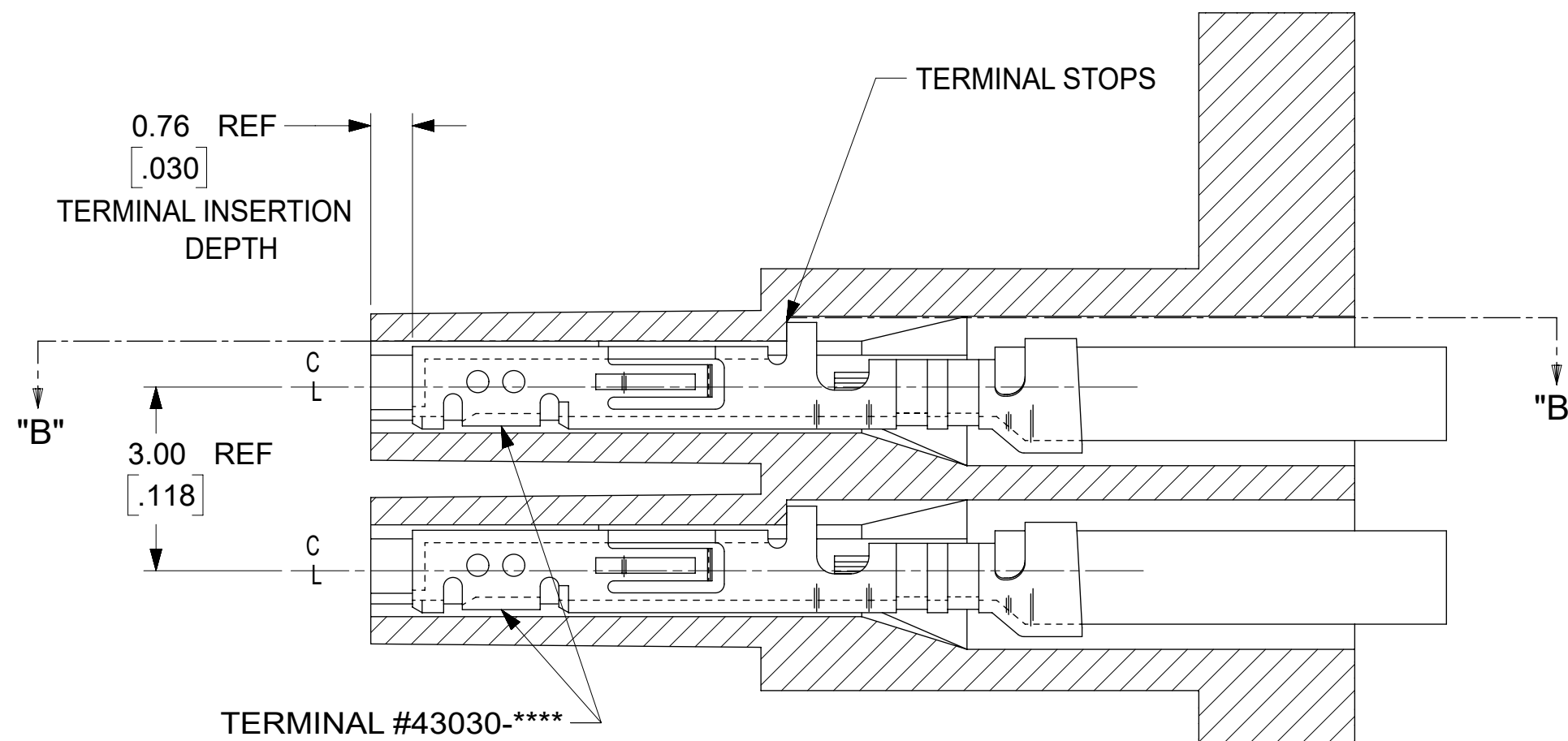


**RECEPTACLE SHOWN MOUNTED IN PANEL**

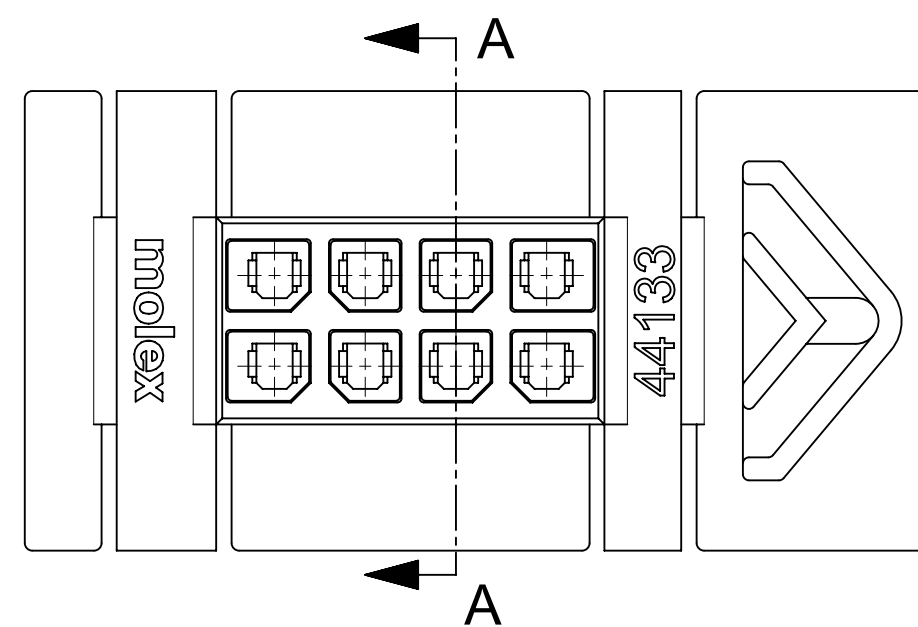
TERMINAL LOCKING TABS MUST BE FULLY SEATED TO HOUSING BEFORE MATING WITH OTHER HALF OF CONNECTOR SYSTEM.



**SECTION "B"-"B"**  
(SCALE 10:1)



**SECTION "A"-"A"**  
WITH TERMINAL  
(SCALE 10:1)



|                                       |  |  |  |  |         |  |  |  |  |   |  |  |  |  |                 |  |  |  |  |          |  |  |  |  |  |  |  |  |  |          |  |  |  |  |  |  |  |  |  |
|---------------------------------------|--|--|--|--|---------|--|--|--|--|---|--|--|--|--|-----------------|--|--|--|--|----------|--|--|--|--|--|--|--|--|--|----------|--|--|--|--|--|--|--|--|--|
| FUNCTIONAL SYMBOLS                    |  |  |  |  |         |  |  |  |  | THIS DRAWING CONTAINS INFORMATION THAT IS PROPRIETARY TO MOLEX ELECTRONIC TECHNOLOGIES, LLC AND SHOULD NOT BE USED WITHOUT WRITTEN PERMISSION |  |  |  |  |                 |  |  |  |  |          |  |  |  |  |  |  |  |  |  |          |  |  |  |  |  |  |  |  |  |
| DIMENSION UNITS                       |  |  |  |  | SCALE   |  |  |  |  | CURRENT REV DESC: ADD KEEPOUT AREA  |  |  |  |  |                 |  |  |  |  |          |  |  |  |  |  |  |  |  |  |          |  |  |  |  |  |  |  |  |  |
| MM/INCH                               |  |  |  |  | NTS     |  |  |  |  |   |  |  |  |  |                 |  |  |  |  |          |  |  |  |  |  |  |  |  |  |          |  |  |  |  |  |  |  |  |  |
| GENERAL TOLERANCES (UNLESS SPECIFIED) |  |  |  |  |         |  |  |  |  |   |  |  |  |  |                 |  |  |  |  |          |  |  |  |  |  |  |  |  |  |          |  |  |  |  |  |  |  |  |  |
| 4 PLACES ±                            |  |  |  |  | MM      |  |  |  |  | INCH  |  |  |  |  |                 |  |  |  |  |          |  |  |  |  |  |  |  |  |  |          |  |  |  |  |  |  |  |  |  |
| 3 PLACES ±                            |  |  |  |  | ± 0.01  |  |  |  |  |   |  |  |  |  |                 |  |  |  |  |          |  |  |  |  |  |  |  |  |  |          |  |  |  |  |  |  |  |  |  |
| 2 PLACES ±                            |  |  |  |  | ± 0.25  |  |  |  |  | ± 0.014   |  |  |  |  |                 |  |  |  |  |          |  |  |  |  |  |  |  |  |  |          |  |  |  |  |  |  |  |  |  |
| 1 PLACE ±                             |  |  |  |  | ± 0.35  |  |  |  |  | ±   |  |  |  |  |                 |  |  |  |  |          |  |  |  |  |  |  |  |  |  |          |  |  |  |  |  |  |  |  |  |
| 0 PLACES ±                            |  |  |  |  | ±       |  |  |  |  |   |  |  |  |  |                 |  |  |  |  |          |  |  |  |  |  |  |  |  |  |          |  |  |  |  |  |  |  |  |  |
| ANGULAR TOL ±                         |  |  |  |  | 0.5 °   |  |  |  |  |   |  |  |  |  |                 |  |  |  |  |          |  |  |  |  |  |  |  |  |  |          |  |  |  |  |  |  |  |  |  |
| DIVISIONAL SYMBOLS                    |  |  |  |  |         |  |  |  |  | DRAFT WHERE APPLICABLE MUST REMAIN WITHIN DIMENSIONS  |  |  |  |  |                 |  |  |  |  |          |  |  |  |  |  |  |  |  |  |          |  |  |  |  |  |  |  |  |  |
| THIRD ANGLE PROJECTION                |  |  |  |  | DRAWING |  |  |  |  | SERIES  |  |  |  |  | MATERIAL NUMBER |  |  |  |  |          |  |  |  |  |  |  |  |  |  |          |  |  |  |  |  |  |  |  |  |
| C-SIZE                                |  |  |  |  | 44133   |  |  |  |  |   |  |  |  |  | GENERAL MARKET  |  |  |  |  |          |  |  |  |  |  |  |  |  |  |          |  |  |  |  |  |  |  |  |  |
| EC NO: 660931                         |  |  |  |  |         |  |  |  |  | DRWN: MKIPPER 2021/04/09  |  |  |  |  |                 |  |  |  |  |          |  |  |  |  |  |  |  |  |  |          |  |  |  |  |  |  |  |  |  |
| CHK'D: JEHRISMAN                      |  |  |  |  |         |  |  |  |  | 2021/07/16  |  |  |  |  |                 |  |  |  |  |          |  |  |  |  |  |  |  |  |  |          |  |  |  |  |  |  |  |  |  |
| APPR: FSMITH                          |  |  |  |  |         |  |  |  |  | 2021/07/19  |  |  |  |  |                 |  |  |  |  |          |  |  |  |  |  |  |  |  |  |          |  |  |  |  |  |  |  |  |  |
| INITIAL REVISION:                     |  |  |  |  |         |  |  |  |  |   |  |  |  |  |                 |  |  |  |  |          |  |  |  |  |  |  |  |  |  |          |  |  |  |  |  |  |  |  |  |
| DRWN: GAVERILL                        |  |  |  |  |         |  |  |  |  | 2008/08/11  |  |  |  |  |                 |  |  |  |  |          |  |  |  |  |  |  |  |  |  |          |  |  |  |  |  |  |  |  |  |
| APPR: FSMITH                          |  |  |  |  |         |  |  |  |  | 2008/08/22  |  |  |  |  |                 |  |  |  |  |          |  |  |  |  |  |  |  |  |  |          |  |  |  |  |  |  |  |  |  |
| DOCUMENT NUMBER                       |  |  |  |  |         |  |  |  |  | DOC TYPE  |  |  |  |  |                 |  |  |  |  | DOC PART |  |  |  |  |  |  |  |  |  | REVISION |  |  |  |  |  |  |  |  |  |
| SD-44133-003                          |  |  |  |  |         |  |  |  |  | PSD   |  |  |  |  |                 |  |  |  |  | 001      |  |  |  |  |  |  |  |  |  | B5       |  |  |  |  |  |  |  |  |  |
| SHEET NUMBER                          |  |  |  |  |         |  |  |  |  | 2 OF 2  |  |  |  |  |                 |  |  |  |  |          |  |  |  |  |  |  |  |  |  |          |  |  |  |  |  |  |  |  |  |

| CIRCUIT SIZE | DIM "G"        | DIM "H"        |
|--------------|----------------|----------------|
| 4            | 13.46<br>.530  | 22.10<br>.870  |
| 6            | 16.46<br>.648  | 25.10<br>.988  |
| 8            | 19.46<br>.766  | 28.10<br>1.106 |
| 10           | 22.46<br>.884  | 31.10<br>1.224 |
| 12           | 25.46<br>1.002 | 34.10<br>1.343 |
| 14           | 28.46<br>1.120 | 37.10<br>1.461 |
| 16           | 31.46<br>1.239 | 40.10<br>1.579 |
| 18           | 34.46<br>1.357 | 43.10<br>1.697 |
| 20           | 37.46<br>1.475 | 46.10<br>1.815 |
| 22           | 40.46<br>1.593 | 49.10<br>1.933 |
| 24           | 43.46<br>1.711 | 52.10<br>2.051 |