

For Ages  
**16+**

# Create<sup>®</sup> 3 Educational Robot

## iRobot's Foundation for Mobile Robot Development



### A Buildable, Mobile Robotics Platform

Tackle robotics projects with an affordable, trusted mobile robot development platform that features a buildable design to mount additional hardware.



### Begin by Programming Basic Behaviors

Grasp the fundamentals of robotics, computer science, and engineering by programming the Create<sup>®</sup> 3 to perform simple behaviors, sounds, and movements.



### Evolve to Advanced Robotics Applications

Tap into advanced applications including multi-robot exploration, navigation and mapping technology, and telepresence capabilities. Additional hardware not included.



With over 30 years of building and programming robots, advance your robotics skills with the expert that brings you the Roomba® robot vacuum and Braava® robot mop.



## Create® 3 educational robot features:



### Build and test robotics applications

The new and improved version of its popular predecessor, the Create® 3 provides a full suite of modules, sensors, LED lights, and wheels to fuel robotics exploration.



### Multi-language software support

Learn using ROS 2, the industry-standard software for roboticists worldwide. Or leverage the [iRobot Coding App](#) and the iRobot Education Python 3 SDK for increased access to robotics education and research.



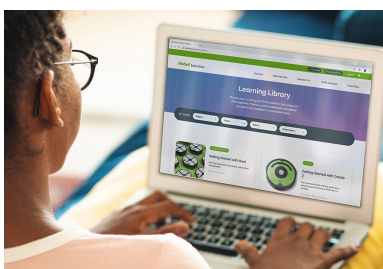
### Operational out of the box

Program, connect to, and control the Create® 3 educational robot out of the box with an easy onboarding process. Communicate with the robot using Wi-Fi, Ethernet over USB, or Bluetooth® Low Energy technology.



### Equipped with smart technology

Affordably develop scalable robotics projects with the Create® 3 robot's combination of intelligent sensors and actuators. The robot comes with a Home Base® charging station for docked charging.



### Educator resources available

Explore the iRobot Education [learning library](#) for tutorials and sample projects, or venture into expansive, online open source databases for access to software packages and libraries in ROS 2 or Python 3.

## Specifications

### PRODUCT CONTENTS

Robot Model	1 x Create® 3 Educational Robot
Battery Type	1 x 26 Wh Lithium Ion Rechargeable Battery
Charging Dock	Home Base® Station
Robot UPC	885155030948

### CONNECTIVITY

ROS 2	Wi-Fi Ethernet over USB
iRobot Education Python 3 SDK	Bluetooth® Low Energy
iRobot Coding App	Bluetooth® Low Energy

### SENSORS

1 x Power button
2x User buttons
2x Front bumper zones
2x Wheel encoders
4x IR cliff sensors
6x IR obstacle sensors
1 x Downward optical flow sensor for odometry
1 x 3D gyroscope
1 x 3D accelerometer
1 x Battery level monitor

### ACTUATORS

2x Drive motors
6x RGB LED ring
1 x Speaker

### CHARGING AND EXPANSION

1 x Docking port
1 x USB port, 3A at regulated 5V
1 x Payload power, 2A at unregulated (nominal 14.4V)

[edu.irobot.com](http://edu.irobot.com) | [education@irobot.com](mailto:education@irobot.com)

©2022 iRobot Corporation, 8 Crosby Drive, Bedford, MA 01730 USA. All rights reserved. iRobot, Create, Home Base, Roomba and Braava are registered trademarks of iRobot Corporation.

The Bluetooth® word mark and logos are registered trademarks owned by Bluetooth SIG, Inc. and any use of such marks by iRobot is under license. USB-C™ is a trademark of USB Implementers Forum. ROS 2 is governed by Open Robotics and Python 3 is governed by the Python Software Foundation. All other trademarks mentioned are the property of their respective owners.