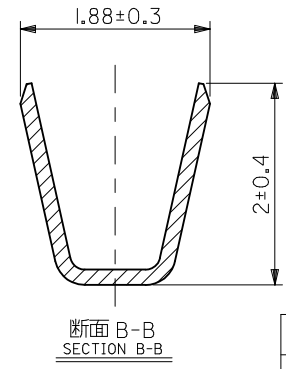
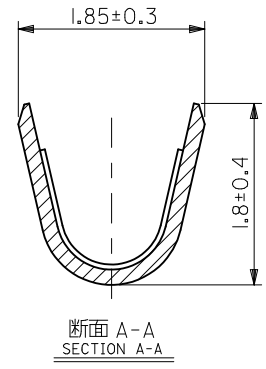
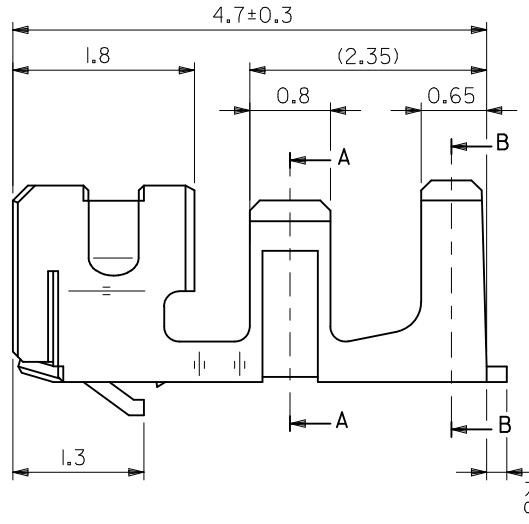
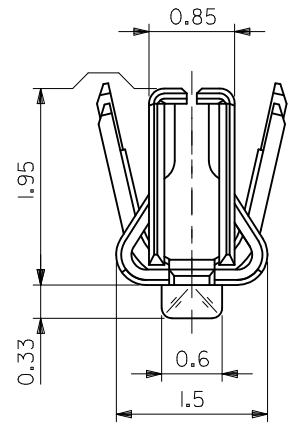


注記
NOTES

1. 材質：リン青銅、t = 0.152
MATERIAL : PHOSPHOR BRONZE, t = 0.152
2. メッキ仕様
PLATING
金メッキ : 0.1µm MIN.
GOLD : 0.1µm MIN.
ニッケルメッキ : 1.5µm MIN. (下地メッキ)
NICKEL : 1.5µm MIN. (UNDER PLATING)
3. 適用ハウジング : 54992-09**, 502351-**00
APPLICABLE HOUSING : 54992-09**, 502351-**00
4. ELV 及び RoHS 適合品
ELV AND RoHS COMPLIANT.



バラ状 LOOSE	56161-8181
連鎖状 CHAIN	56161-8081
端子形状 FORM	オーダー番号 ORDER No.

CONNECTOR SERIES No. 56161-8*81

材料 MATERIAL	注記参照 SEE NOTES
仕上げ FINISH	注記参照 SEE NOTES
適用電線範囲 WIRE RANGE	AWG #22~#26
被服外径範囲 INSURATION RANGE	φ1.4 MAX.

REVISED EC NO.: J2011-0785 DRWK:KAWASHIO 2010/12/08 CHKD:KASAKAWA 2010/12/09 APPR:NUKITA 2010/12/09 A	DESCRIPTION	GENERAL TOLERANCES (UNLESS SPECIFIED)
	REV	10 UNDER ±0.2
		10 OVER 30 UNDER ±0.25
		30 OVER ±0.3
		ANGULAR ±3 °
		DRAFT WHERE APPLICABLE MUST REMAIN WITHIN DIMENSIONS

DIMENSION STYLE MM ONLY	
DRAWN BY KKOBAYASHI	DATE 2001/10/05
CHECKED BY NMATSUURA	DATE 2001/10/05
APPROVED BY YOITO	DATE 2001/10/05
MATERIAL NO. SEE CHART	
SIZE A3	

SCALE 20:1	DESIGN UNITS METRIC	THIRD ANGLE PROJECTION
TITLE SMC (SERVO MOTOR ENCODER CONN.) CRIMP RECEPTACLE		
MOLEX INCORPORATED		
MATERIAL NO. SD-56161-002	DOCUMENT NO.	SHEET NO. 1 OF 1
THIS DRAWING CONTAINS INFORMATION THAT IS PROPRIETARY TO MOLEX INCORPORATED AND SHOULD NOT BE USED WITHOUT WRITTEN PERMISSION		